

**CENTRAL AVENUE
IMPROVEMENTS FROM
135TH ST. W. TO 119TH ST. W.**

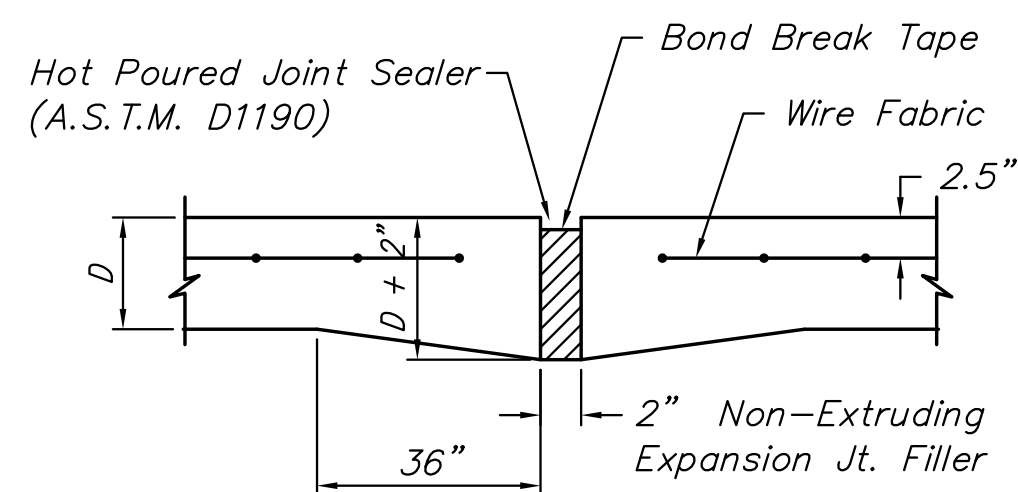
**VALLEY GUTTER
DETAILS**

SHEET TITLE
472-84017
PROJECT NUMBER

JRA
DESIGN BY
JSB
DRAWN BY
JRA
CHECKED BY

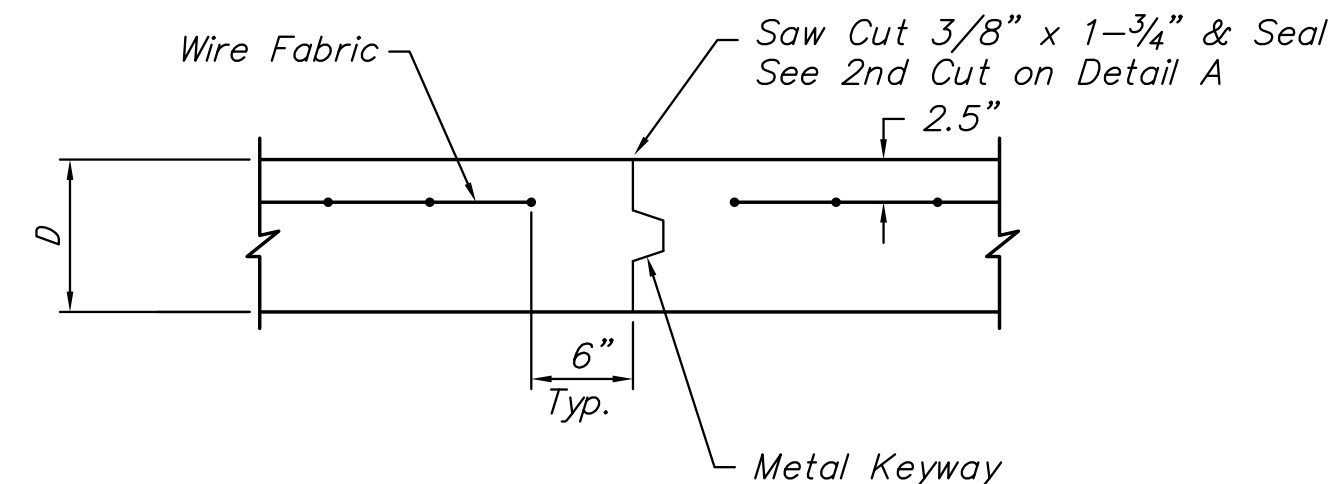
ISSUED
November 9, 2012
REVISED

SHEET NO.
52 of 220

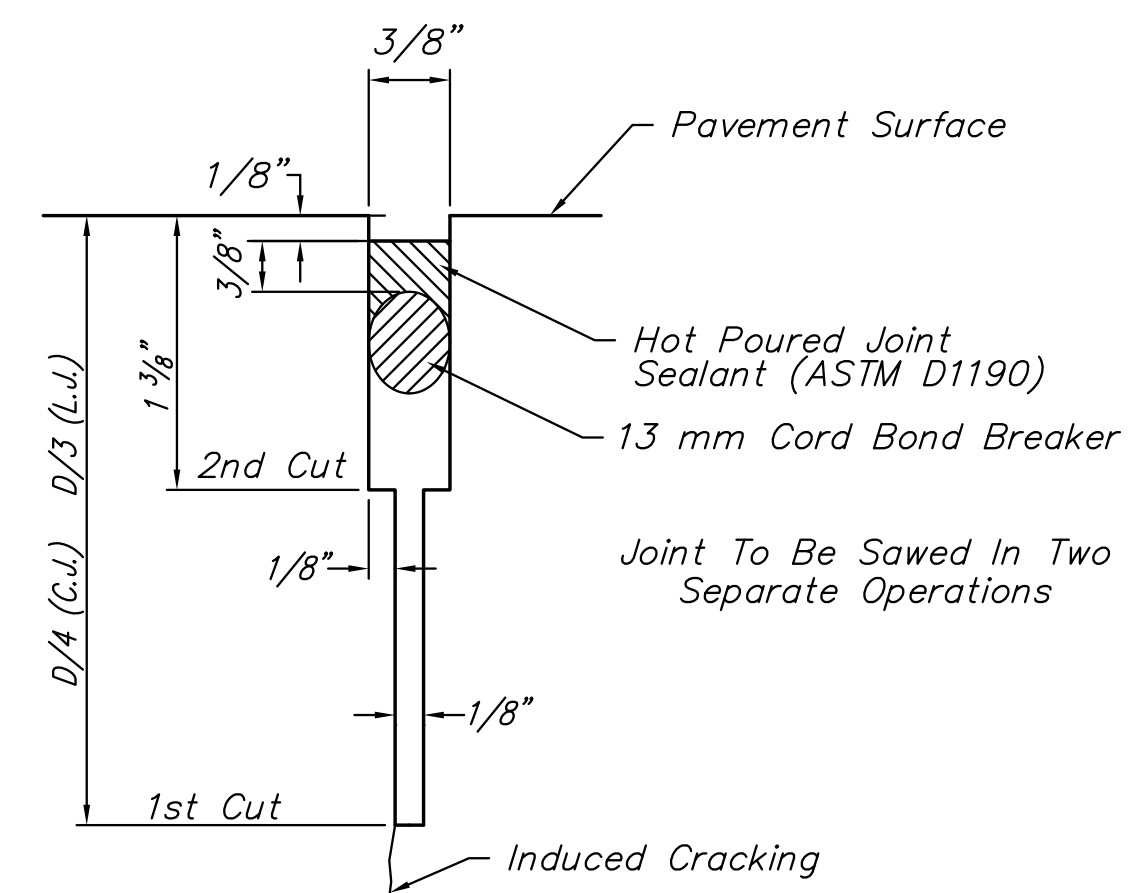


EXPANSION JOINT

NOTE: Extra Thickness to be Subsidiary to Price of Square Yards Pavement

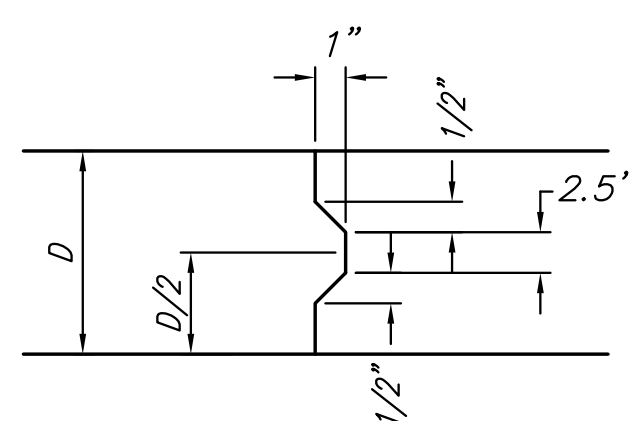


OPTIONAL CONTRACTION JOINT

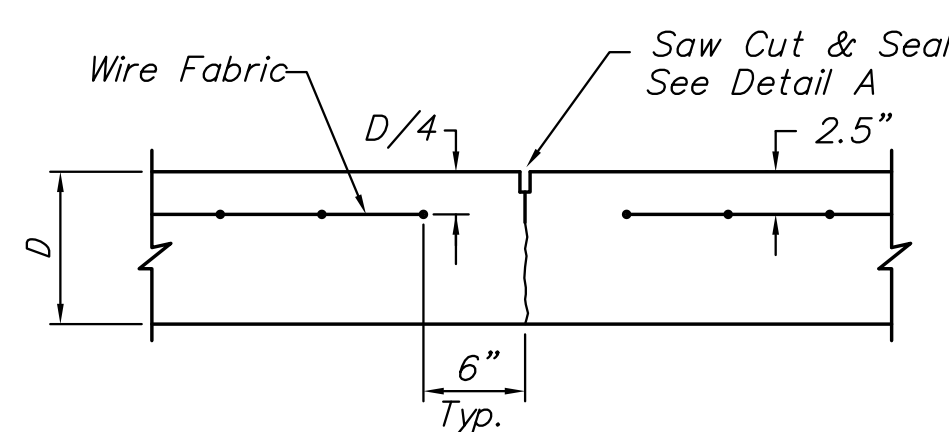


SAW JOINT DETAIL

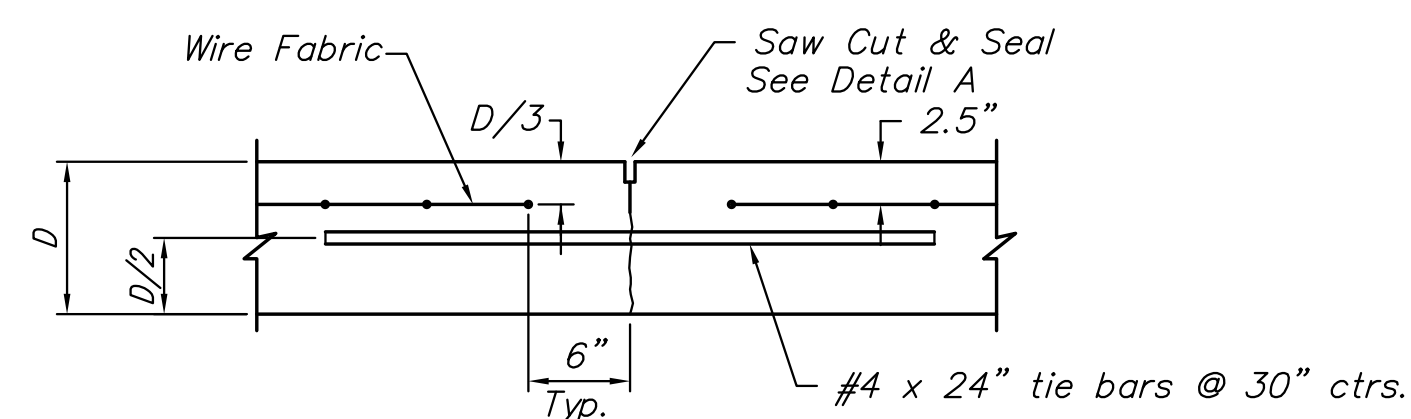
D = 8"



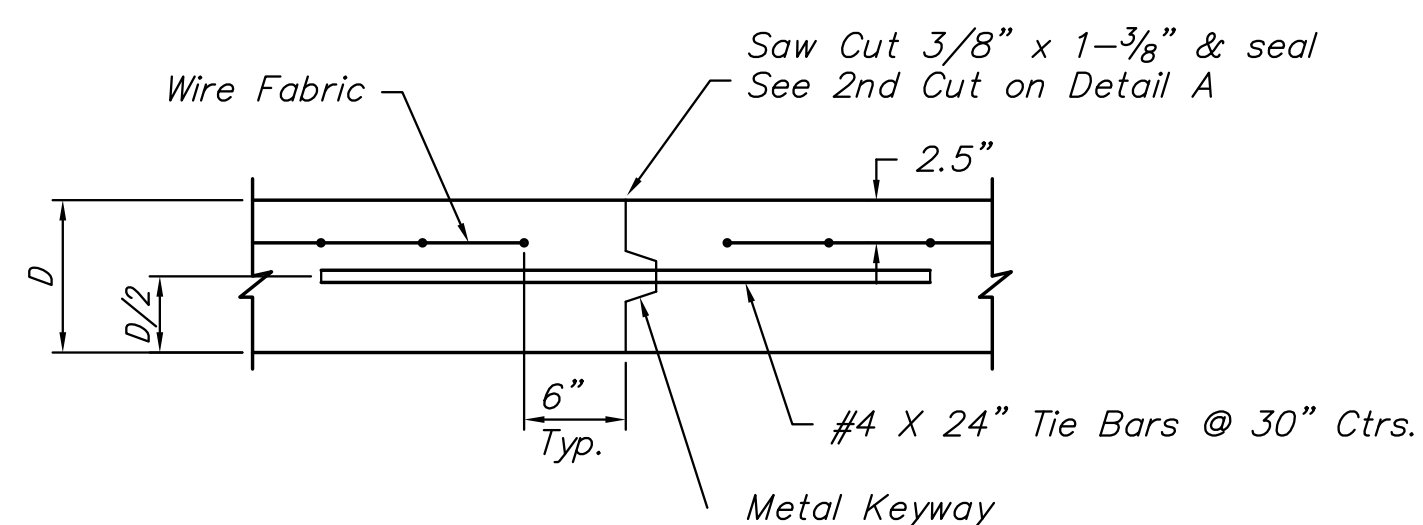
KEYWAY DETAIL



CONTRACTION JOINT DETAIL (C.J.)

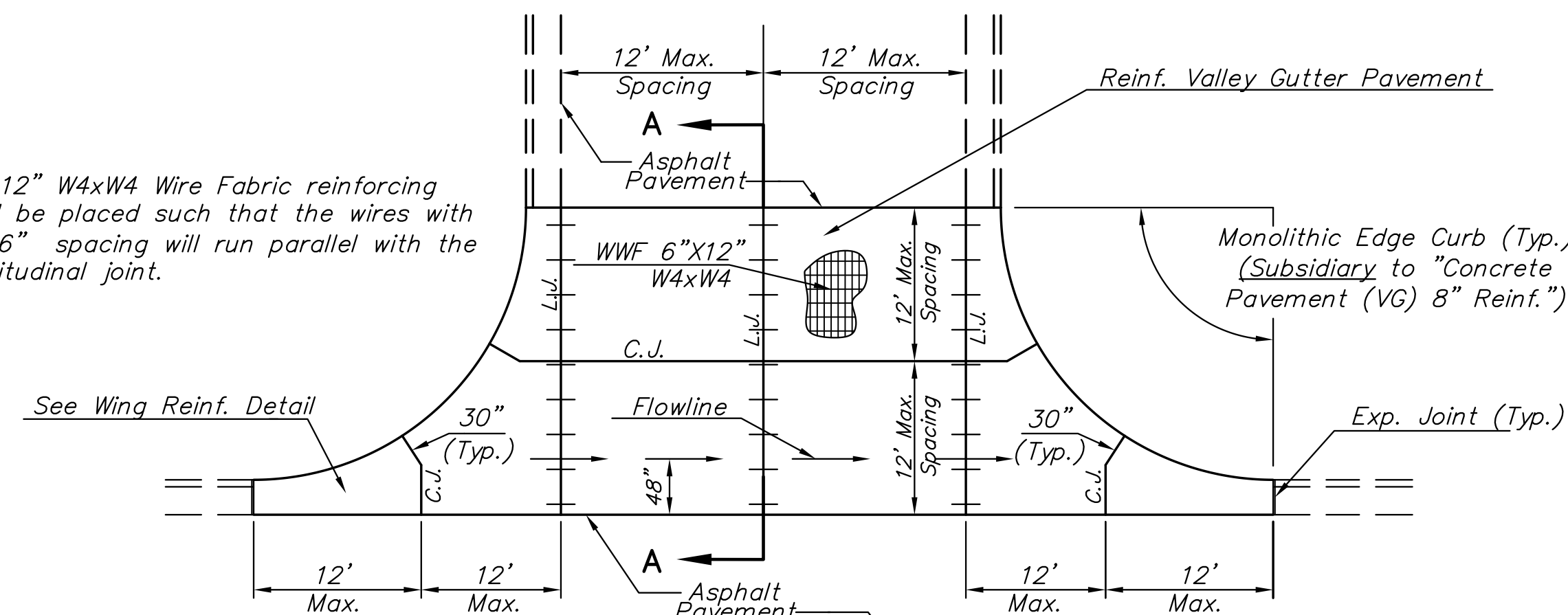


LONGITUDINAL JOINT DETAIL (L.J.)

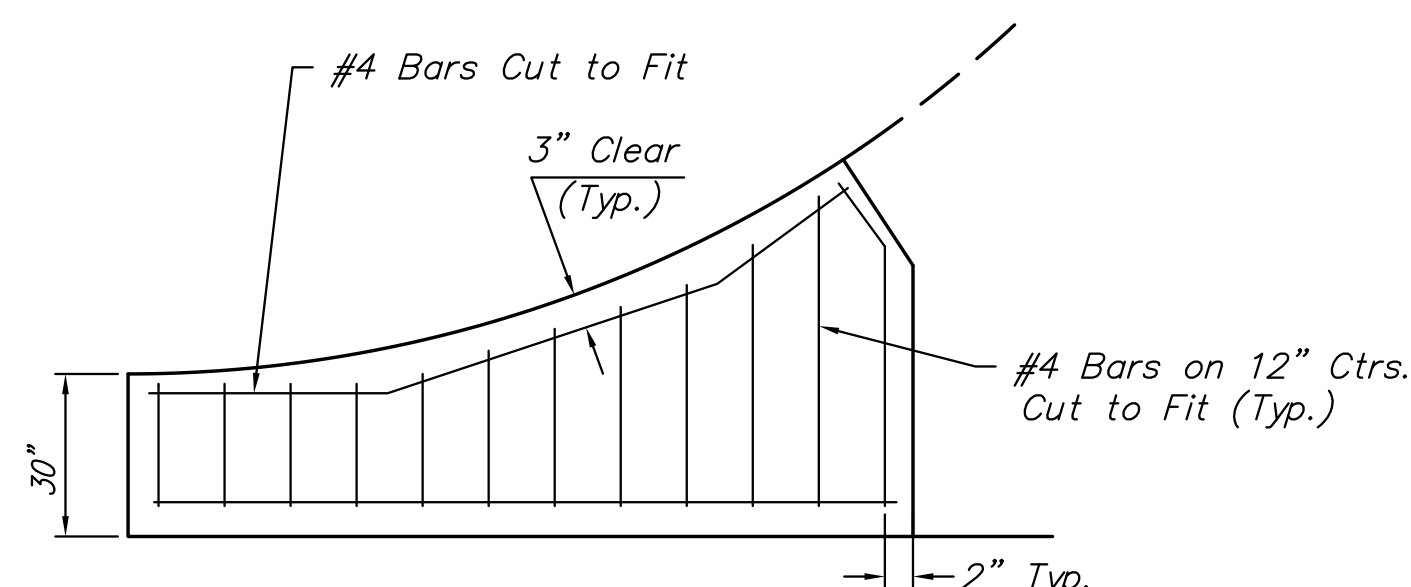


OPTIONAL LONGITUDINAL JOINT DETAIL (L.J.)

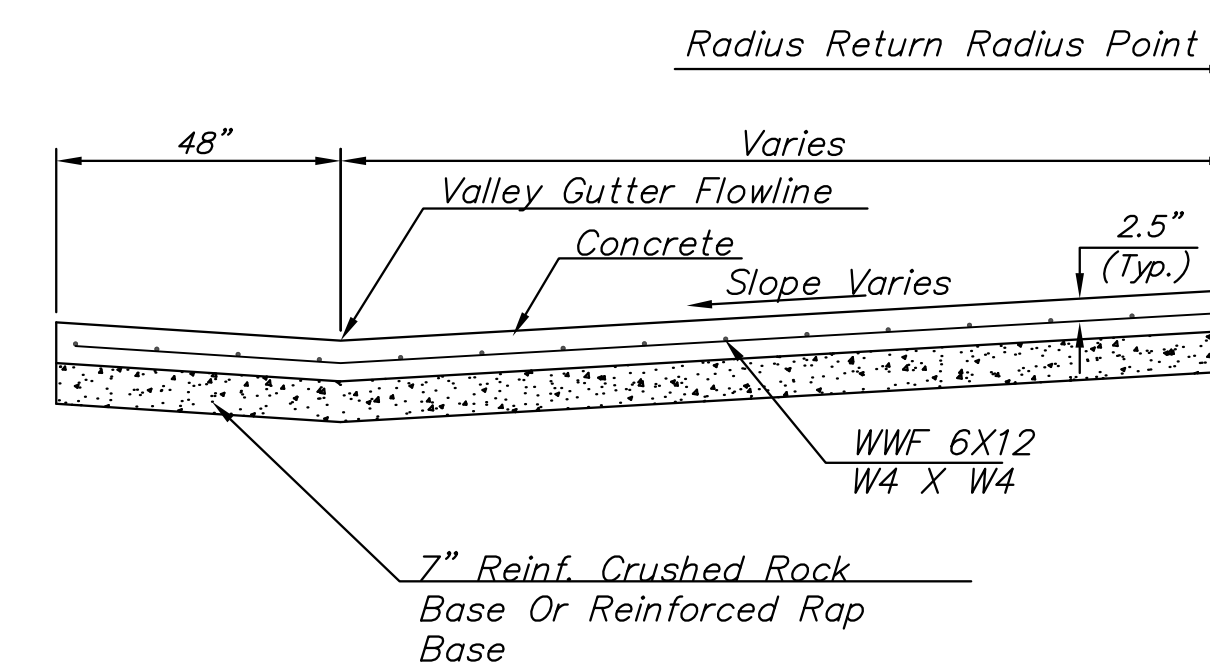
6"x 12" W4xW4 Wire Fabric reinforcing shall be placed such that the wires with the 6" spacing will run parallel with the longitudinal joint.



PLAN



WING REINFORCING DETAIL



SECTION A-A

REINFORCED VALLEY GUTTER DETAIL