



**CENTRAL AVENUE
IMPROVEMENTS FROM
135TH ST. W. TO 19TH ST. W.**

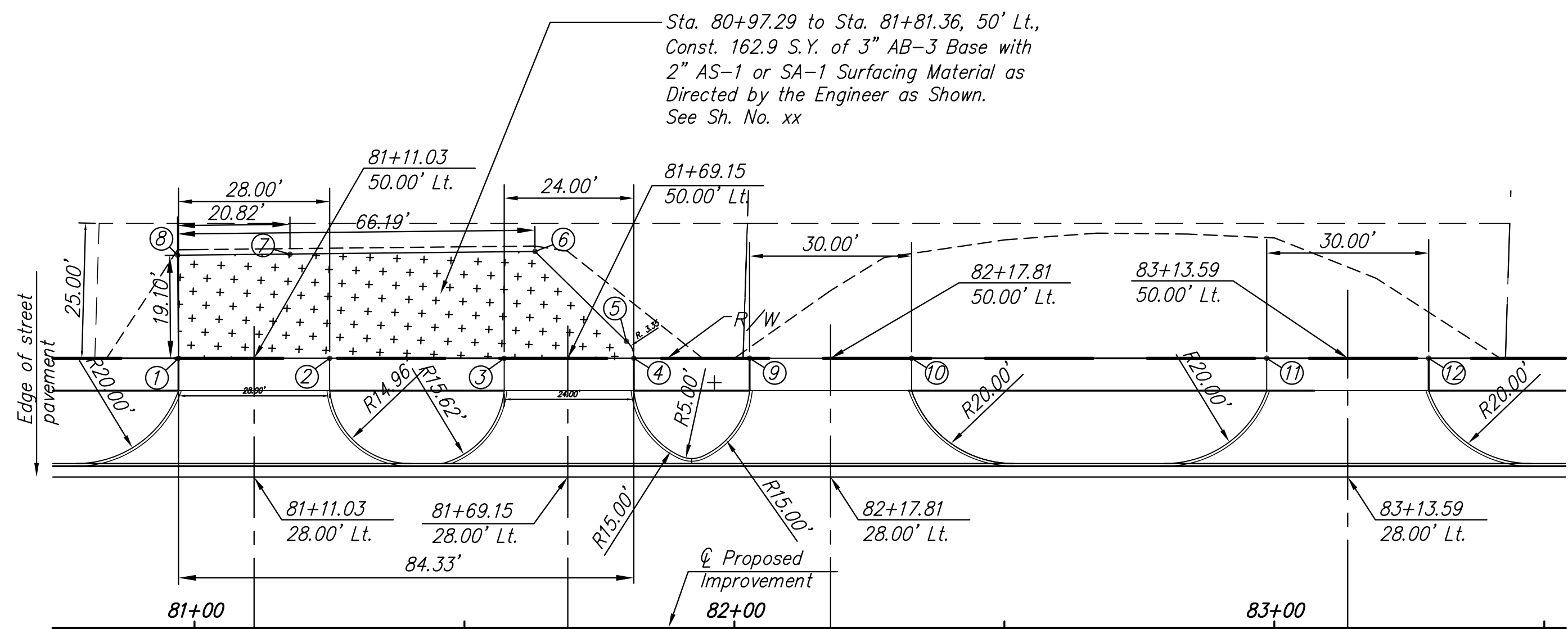
**NON-STANDARD
DRIVE
ENTRANCE
LAYOUT**

SHEET TITLE
472-84017
PROJECT NUMBER

DESIGN BY
JRA
DRAWN BY
WNU
CHECKED BY
JRA

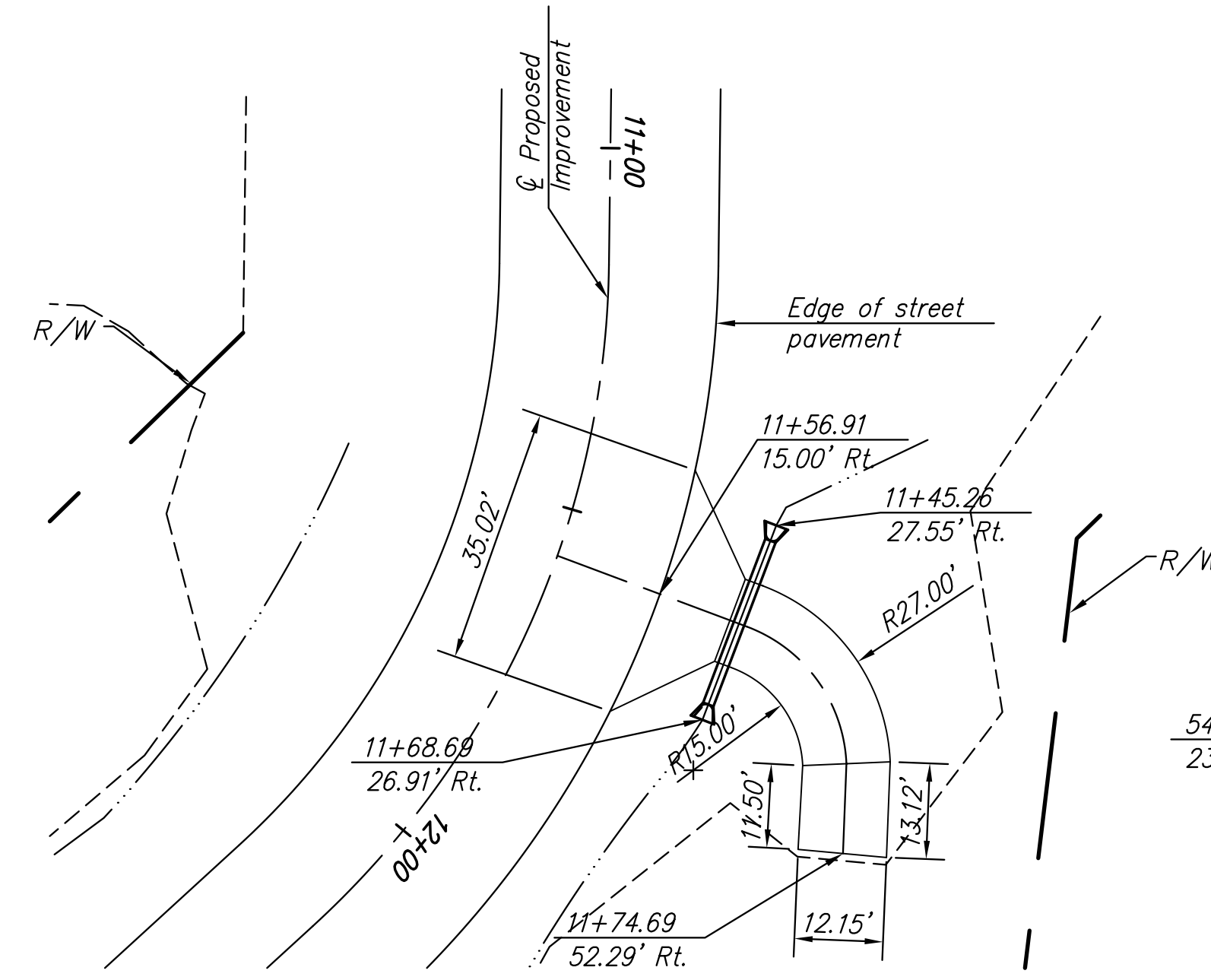
ISSUED
November 9, 2012
REVISED

SHEET NO.
54 of 220

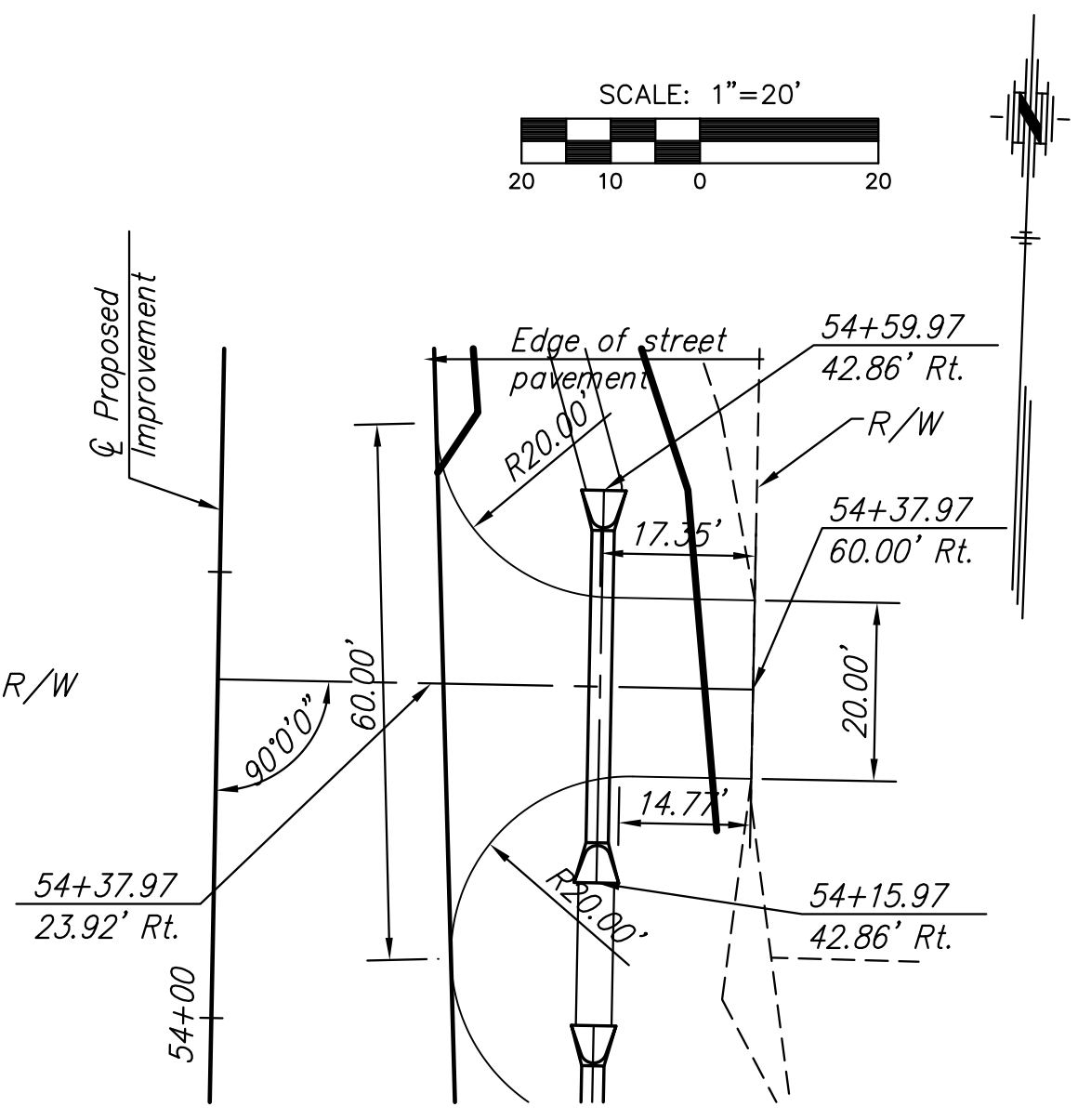


SPECIAL SURFACING AND GRADING PLAN
Sta. 81+11.03 and
Sta. 81+69.15, Lt.

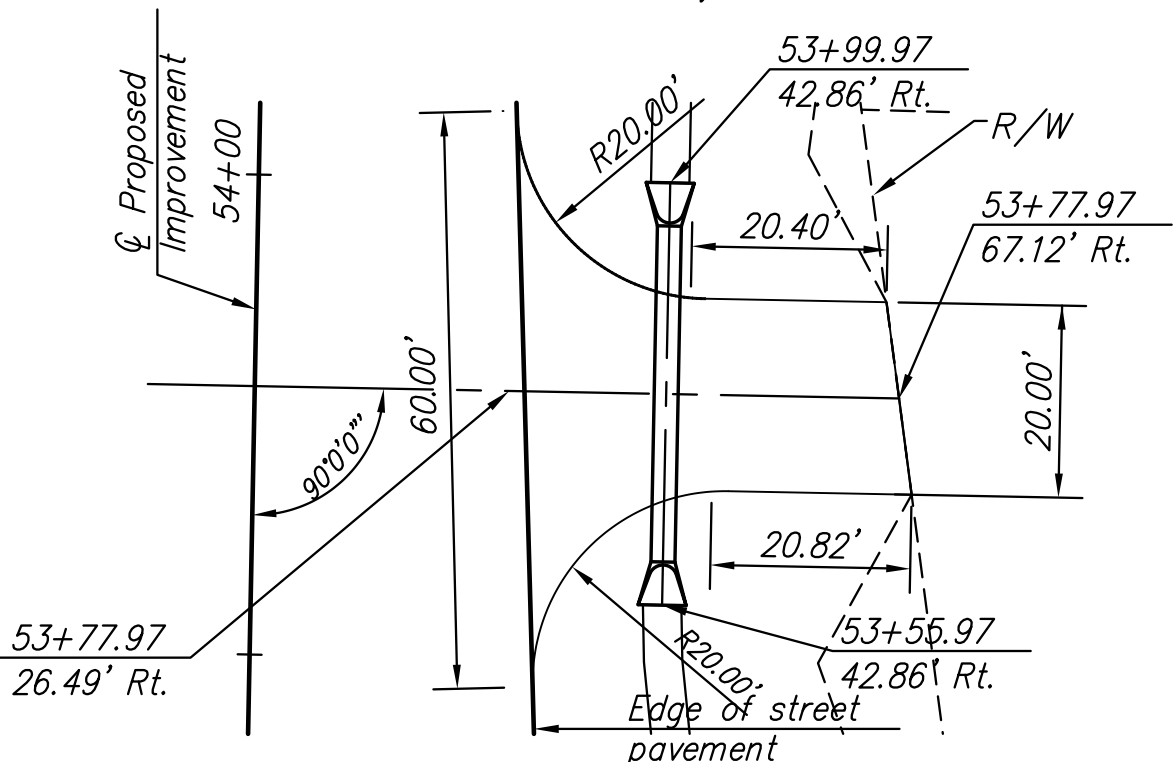
POINT NO.	NORTHING	EASTING	ELEVATION	NOTES
1	1688016.6457	1605553.8109	1342.84	Proposed Back of Walk
2	1688017.7006	1605581.7910	1342.88	Proposed Back of Walk
3	1688018.9185	1605614.0974	1342.72	Proposed Back of Walk
4	1688019.8227	1605638.0805	1342.75	Proposed Back of Walk
5	1688022.9321	1605636.5880	1342.90	Match Existing
6	1688038.9168	1605619.0524	1343.48	Match Existing
7	1688036.7318	1605573.7326	1344.06	Match Existing Concrete Drive
8	1688035.7291	1605552.9356	1343.97	Match Existing Concrete Drive
9	1688020.6308	1605659.5151	1342.92	Proposed Back of Walk
10	1688021.7610	1605689.4946	1342.58	Proposed Back of Walk
11	1688024.2390	1605755.2256	1342.69	Proposed Back of Walk
12	1688025.3692	1605785.2043	1342.57	Proposed Back of Walk



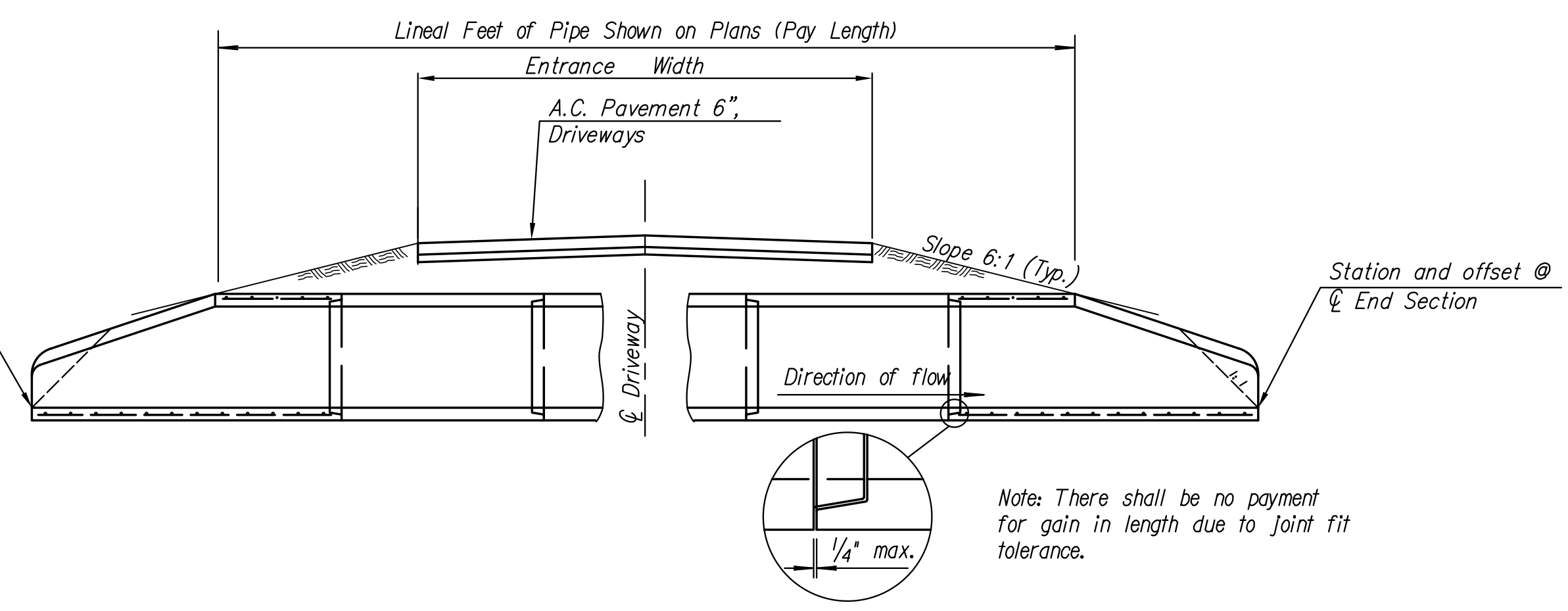
JENNIE STREET ENTRANCE PLAN
Sta. 106+86.99, Rt.



135TH STREET ENTRANCE PLAN
Sta. 54+37.97, Rt.



135TH STREET ENTRANCE PLAN
Sta. 53+77.97, Rt.



TYPICAL ENTRANCE SECTION WITH CULVERT

☐ Driveway Station	Side	Culvert Type	Size or Bid Designation Sq. Ft.	Lin. Ft. of Pipe	# of End Sections *	End Section Location (See Detail)						A.C. Pavement 6" Driveways (Sq. Ft.)	Concrete Driveway 8" (Sq. Ft.)
						Station	Offset	Flow	Station	Offset	Flow		
135TH ST. WEST													
53+77.97	Rt.	RCP	Pipe, SWS, 24" Entrance	44.00'	2	53+55.97	42.86 R	1346.61	53+99.97	42.86 R	1347.22		953.10
54+37.97	Rt.	RCP	Pipe, SWS, 24" Entrance	44.00'	2	54+15.97	42.86 R	1347.46	54+59.97	42.86 R	1348.15	866.88	928.98
53+77.97	Lt.	RCP	Pipe, SWS, 24" Entrance	44.00'	2	53+56.30	43.15 L	1346.61	54+00.00	38.02 L	1347.22		
JENNIE AVE.													
11+56.91	Rt.	RCP	Pipe, SWS, 18" Entrance	28.50'	2	11+68.69	26.91 R	1344.34	11+45.26	27.55 R	1344.50	714.06	

See Sh. No. 77 for RCP Details

* End Sections are not paid for separately. They are paid for as length of pipe.

LEGEND

- Pavement Removal
- Brick Pavers