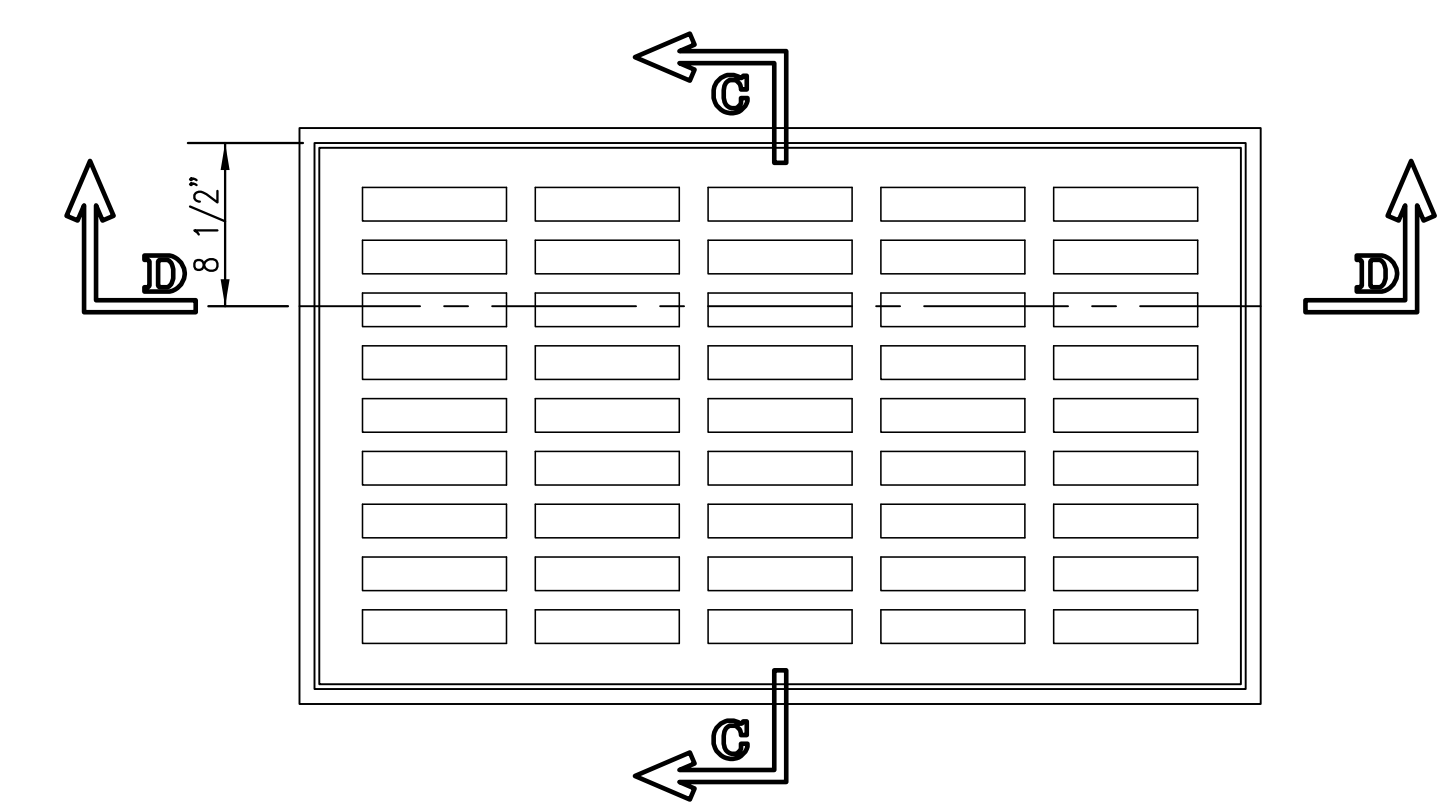
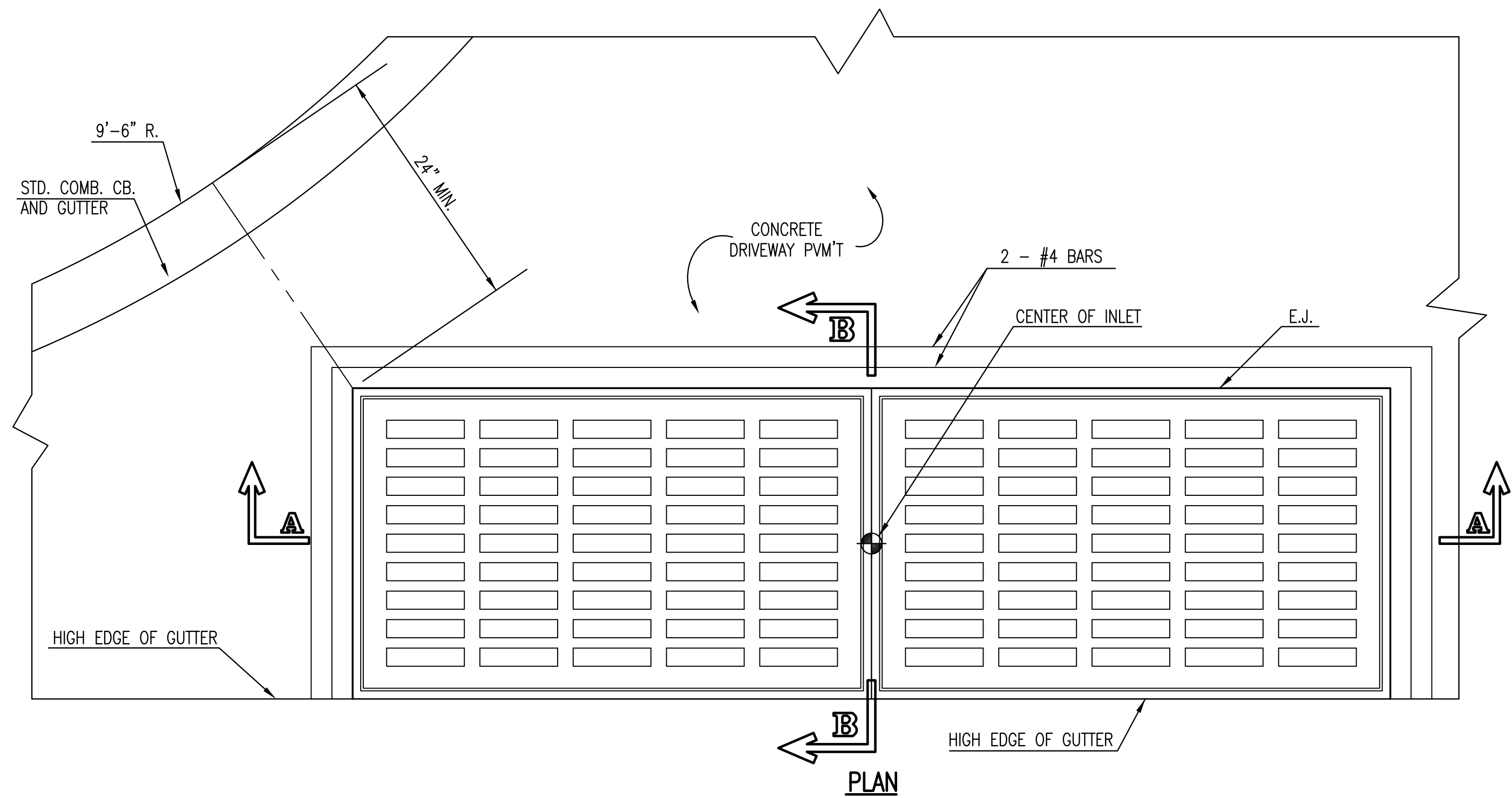
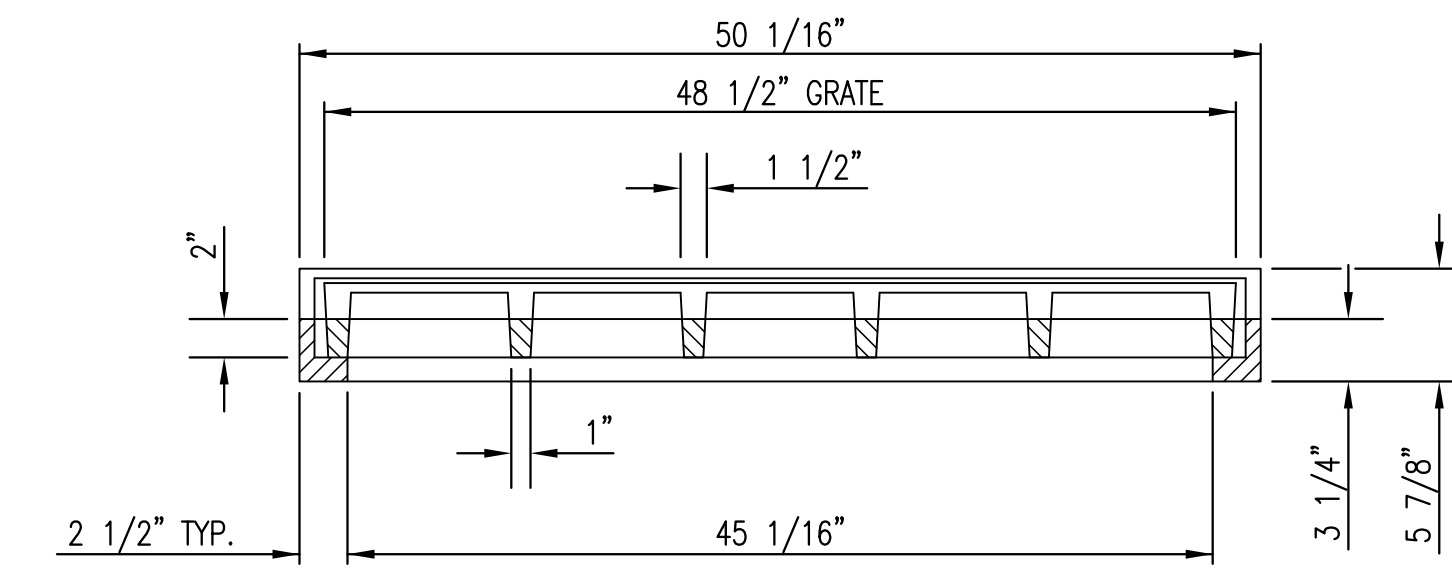


GENERAL NOTES

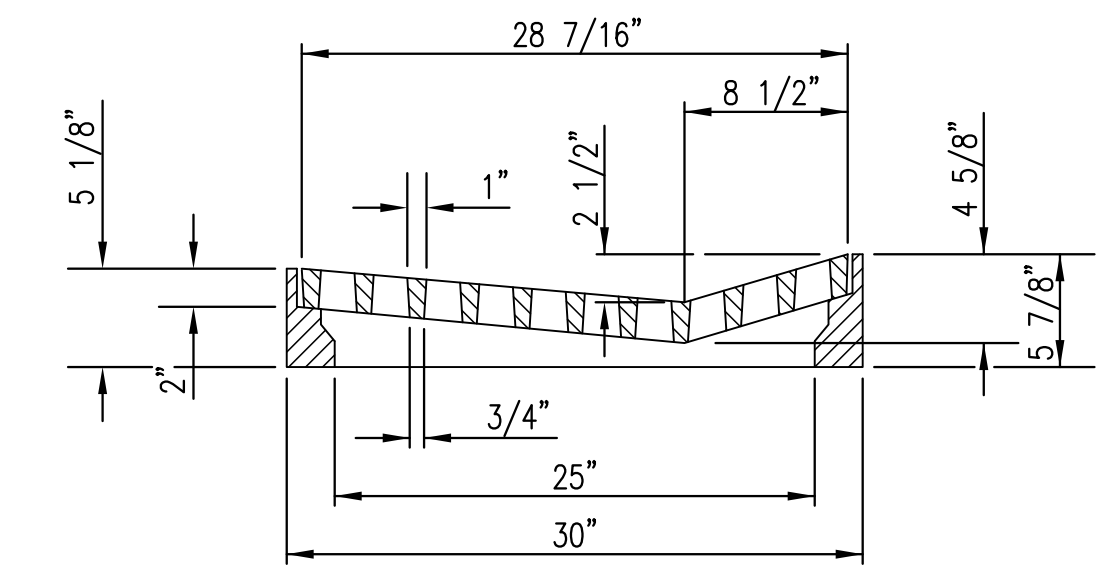
1. GRATE FRAME TO BE INSTALLED ON THIN MORTAR CUSHION TO INSURE FULL SUPPORT ALONG BRICK. CONCRETE USED FOR INLET CONSTRUCTION SHALL CONFORM TO CITY OF WICHITA SPECIFICATIONS FOR CONCRETE PAVEMENT MIX.
2. CONTRACTOR SHALL HAVE THE OPTION OF CONSTRUCTING 8" BRICK MASONRY WALL BETWEEN THE CONCRETE INLET BASE AND TOP OF THIS INLET WHEN H=7'-0" OR LESS.
3. INLET INVERT SHALL BE SHAPED WITH 8 SACK SAND MIX CONCRETE TO CREATE FLOW CHANNELS AND TO INCREASE HYDRAULIC EFFICIENCY SUCH THAT THE INLET WILL BE SELF CLEANING BETWEEN ALL INLET AND/OR OUTLET PIPES.
4. THE ENDS OF ALL PIPES INSTALLED IN INLETS SHALL BE CUT OFF FLUSH WITH THE INSIDE FACE OF THE INLET WALL.
5. INLET FRAME AND GRATE TO BE DEETER #2095, EJW #7392, OR APPROVED EQUAL.
6. CONTRACTOR SHALL REMOVE LIFTING HOOKS AFTER INSTALLATION. RECESSES IN INLET WALL SHALL BE GROUTED FLUSH TO THE INLET WALL WITH HYDRAULIC CEMENT AFTER THE INLET IS IN PLACE. LIFTING HOLES THRU THE INLET WALL WILL NOT BE ACCEPTED.



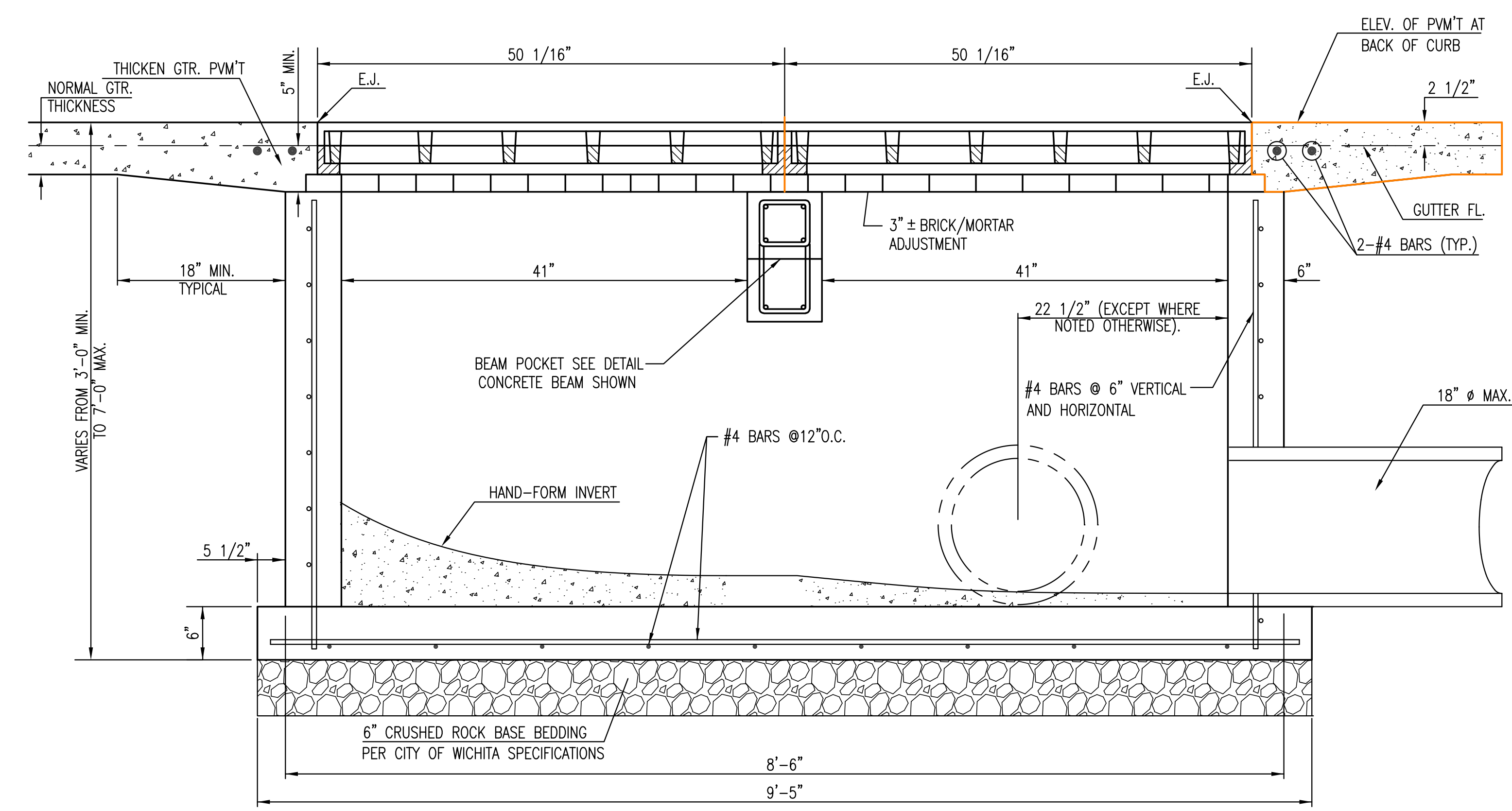
PLAN
DEETER #2095 FRAME & GRATE
 TOTAL WEIGHT: 705 LBS.
 (2 EACH REQUIRED)
 OR EJW #7392



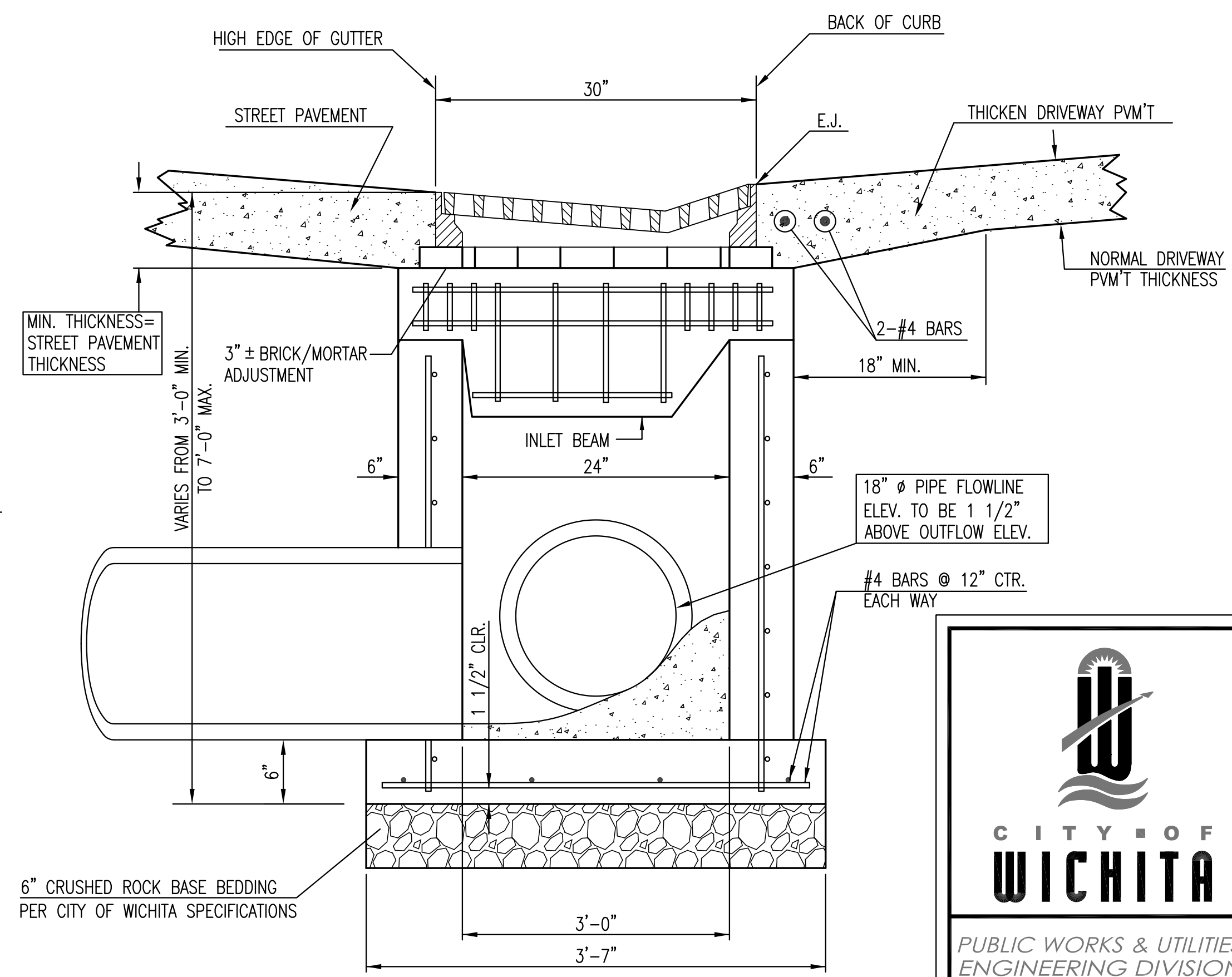
SECTION D-D



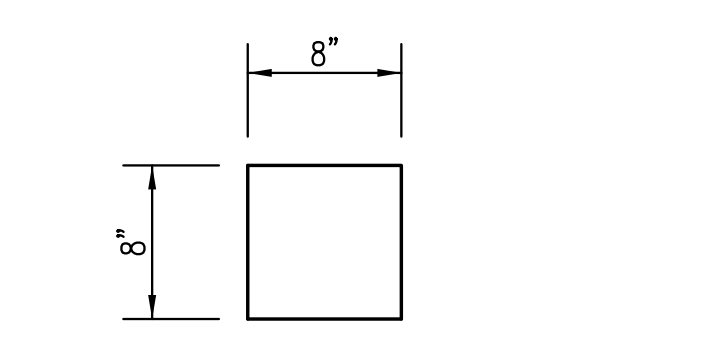
SECTION C-C



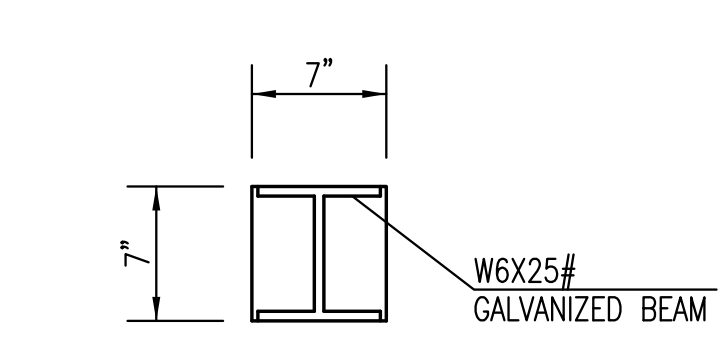
SECTION A-A



SECTION B-B



CONCRETE BEAM POCKET



CALV. STEEL BEAM POCKET



GRADED DRIVEWAY INLET (DOUBLE)		
CITY ENGINEER GARY L. JANZEN, P.E.		
PROJECT NUMBER 472-84017	OCA NUMBER 0000	DATE 04/2010
CITY ENGINEER'S OFFICE CITY HALL - SEVENTH FLOOR 455 NORTH MAIN STREET WICHITA, KANSAS 67202-1620 (316) 268-4501		DESIGN DRAWN SHEET 61 of 220

Saved: 11-13-2012 5:18:57 PM by GUAN000
 Plot Scale: 1:1 11-14-2012 2:02:47 PM by DEEREK LUTLEY
 J:\Civ\04238\dwg\Details\04238 Driveway Inlet-Dble

J:\Civ\04238\dwg\Details\04238 Driveway Inlet-Dble.dwg