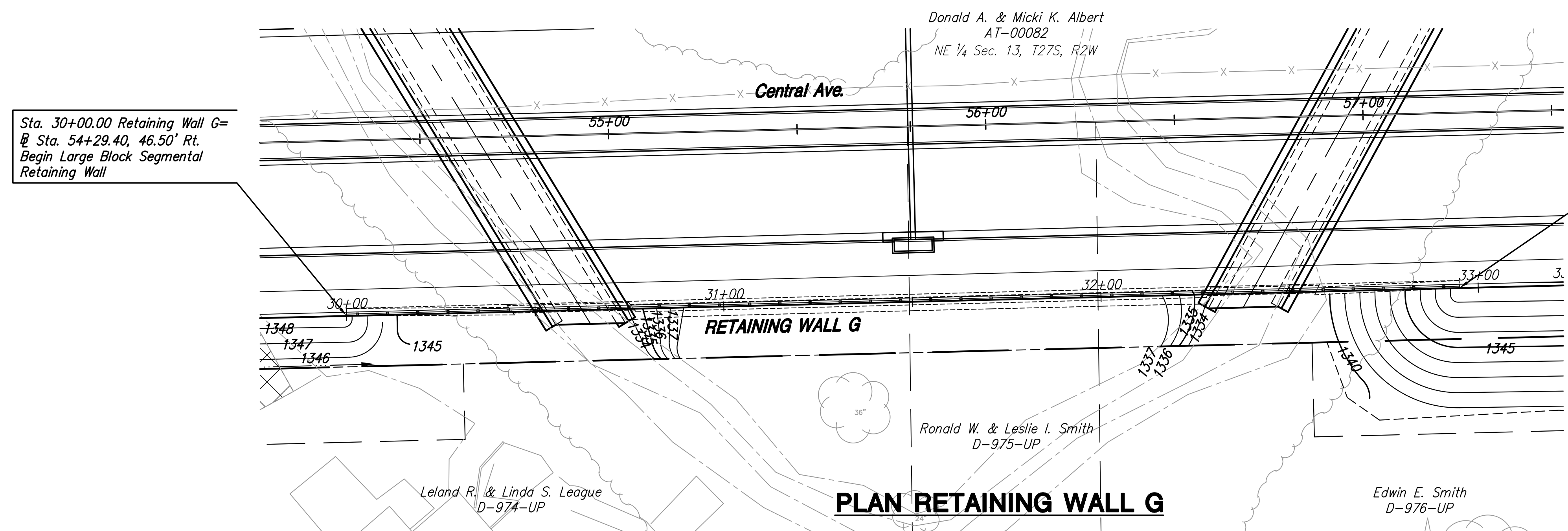
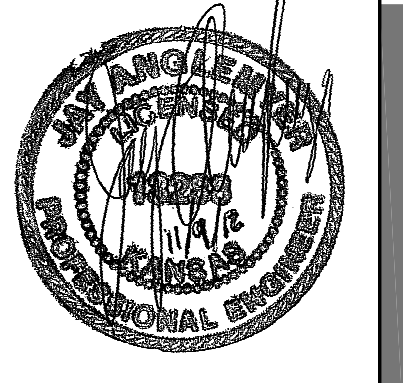


STATE	PROJECT NO.	YEAR	SHEET NO.	SHEETS
KANSAS	87 N-0351-01	2012	79	220

MKEC
ENGINEERING
CONSULTANTS, INC.

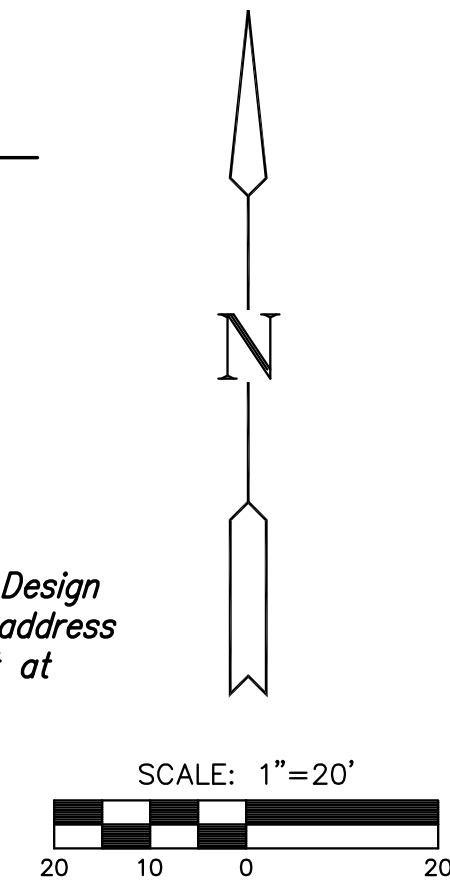
411 N. WEBB ROAD
WICHITA, K.S. 67206
316-684-9600



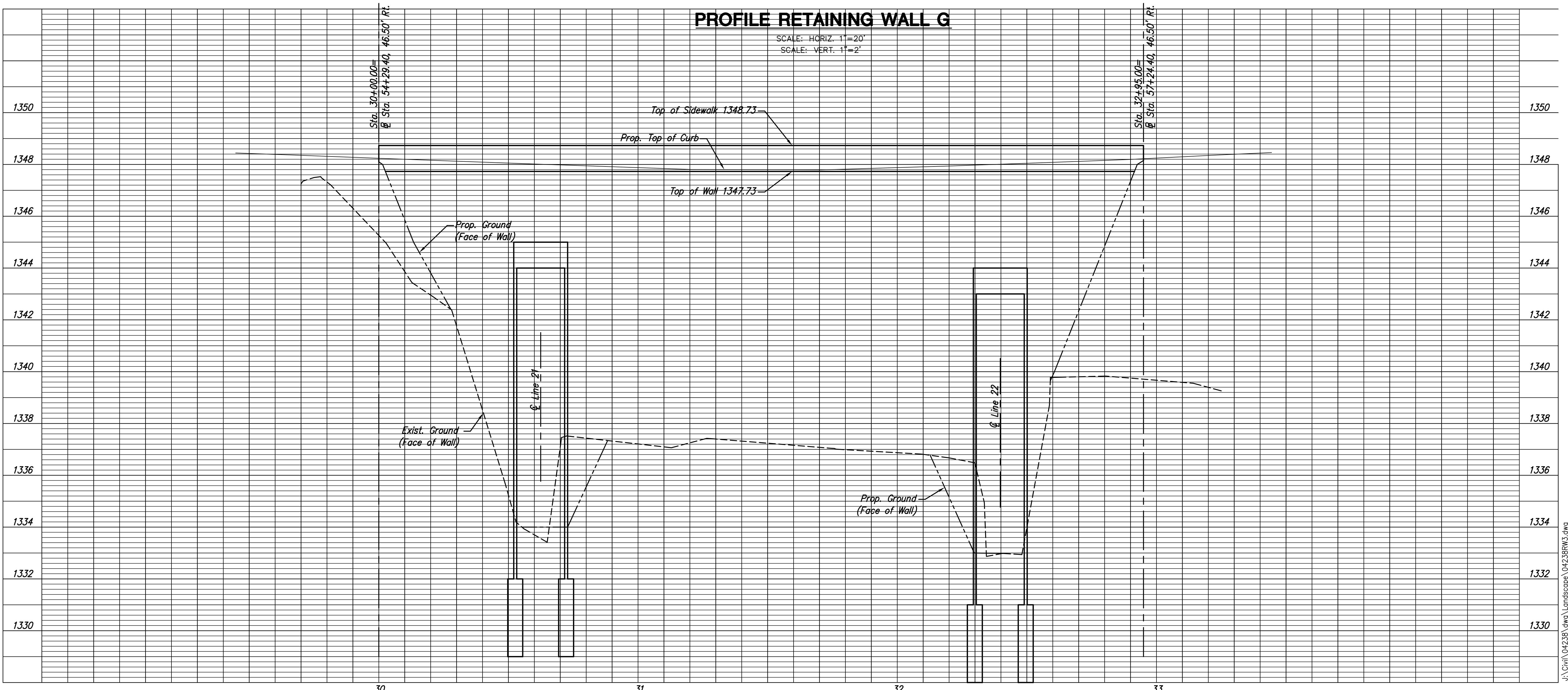
Sta. 32+95.00 Retaining Wall G=
@ Sta. 57+24.40, 46.50' Rt.
End Large Block Segmental
Retaining Wall

Sta. 30+00.00 Retaining Wall G=
@ Sta. 54+29.40, 46.50' Rt.
Begin Large Block Segmental
Retaining Wall

NOTE:
Detailed Wall System Design
implementation shall address
differential settlement at
drainage structures.



PLAN RETAINING WALL G



PROFILE RETAINING WALL G

SCALE: HORIZ. 1"=20'
SCALE: VERT. 1"=2'

**CENTRAL AVENUE
IMPROVEMENTS FROM
135TH ST. W. TO 119TH ST. W.**

**RETAINING WALL G
PLAN AND PROFILE**

SHEET TITLE
472-84017
PROJECT NUMBER

DESIGN BY: JRA
DRAWN BY: WJU
CHECKED BY: JRA

ISSUED
November 9, 2012

REVISED

SHEET NO.
79 of 220

PLOTTED: Wednesday, November 14, 2012 @ 02:40PM

J:\Civil\04238.dwg Landscape\04238RW3.dwg