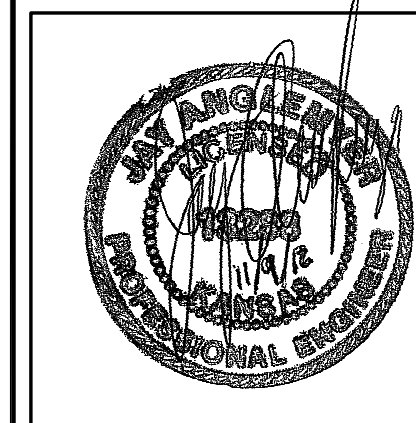


STATE	PROJECT NO.	YEAR	SHEET NO.	SHEETS
KANSAS	87 N-0351-01	2012	81	220

MKEC
ENGINEERING
CONSULTANTS, INC.

411 N. WEBB ROAD
WICHITA, K.S. 67206
316-684-9600



**CENTRAL AVENUE
IMPROVEMENTS FROM
135TH ST. W. TO 19TH ST. W.**

**MISCELLANEOUS
GRADING
PLAN**

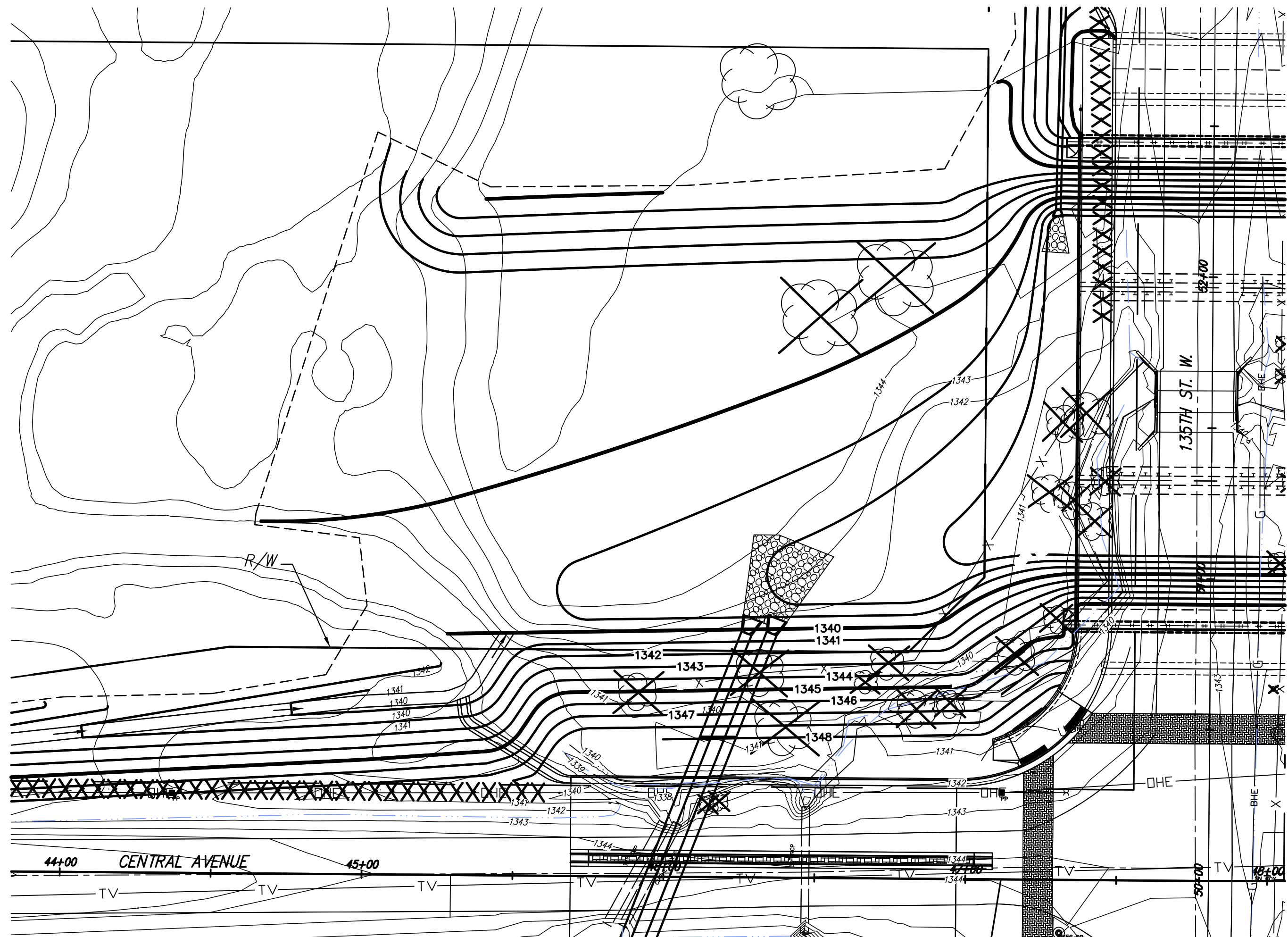
SHEET TITLE
472-84017
PROJECT NUMBER

DESIGN BY: JRA
DRAWN BY: WNU
CHECKED BY: JRA

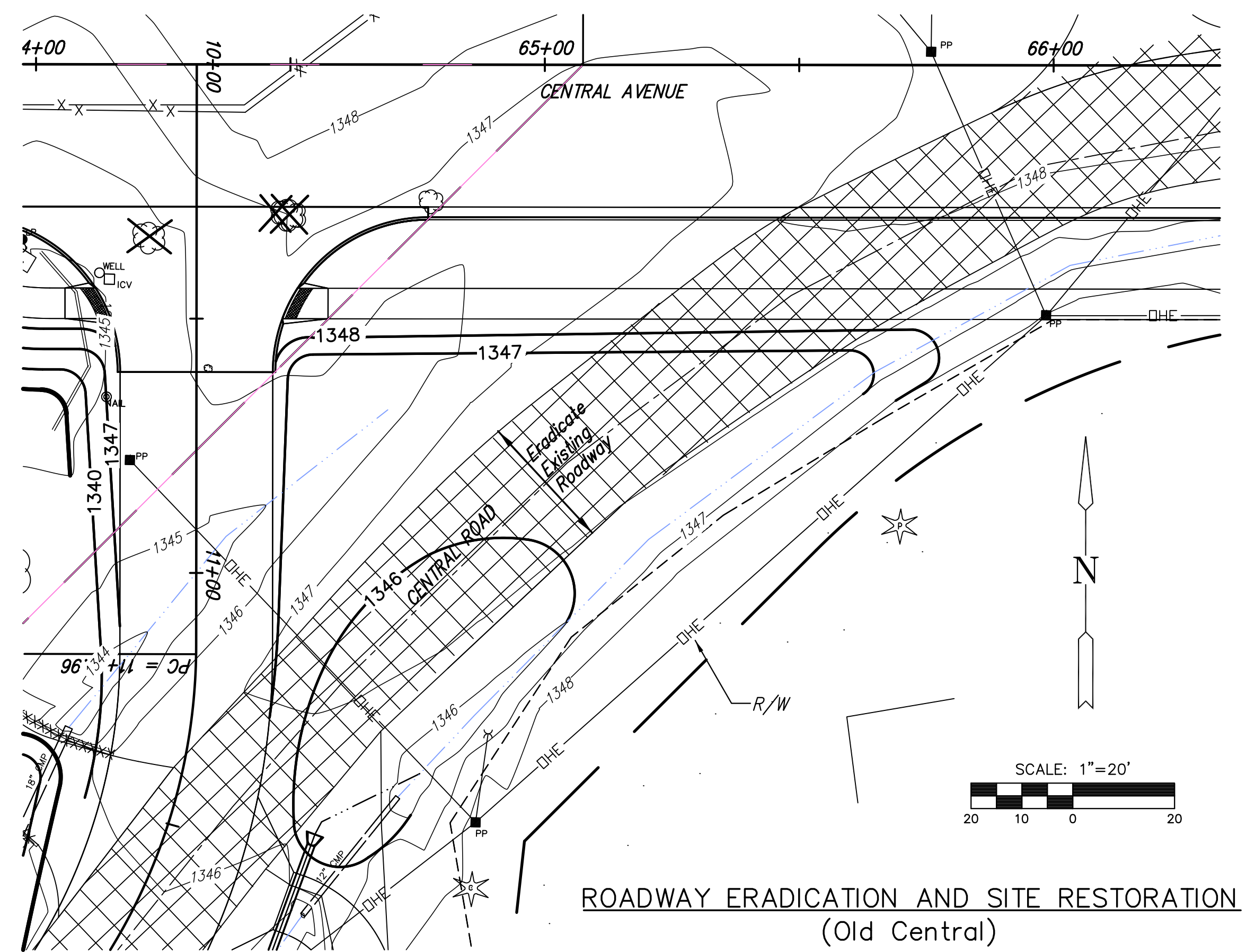
ISSUED
November 9, 2012
REVISED

SHEET NO.
81 of 220

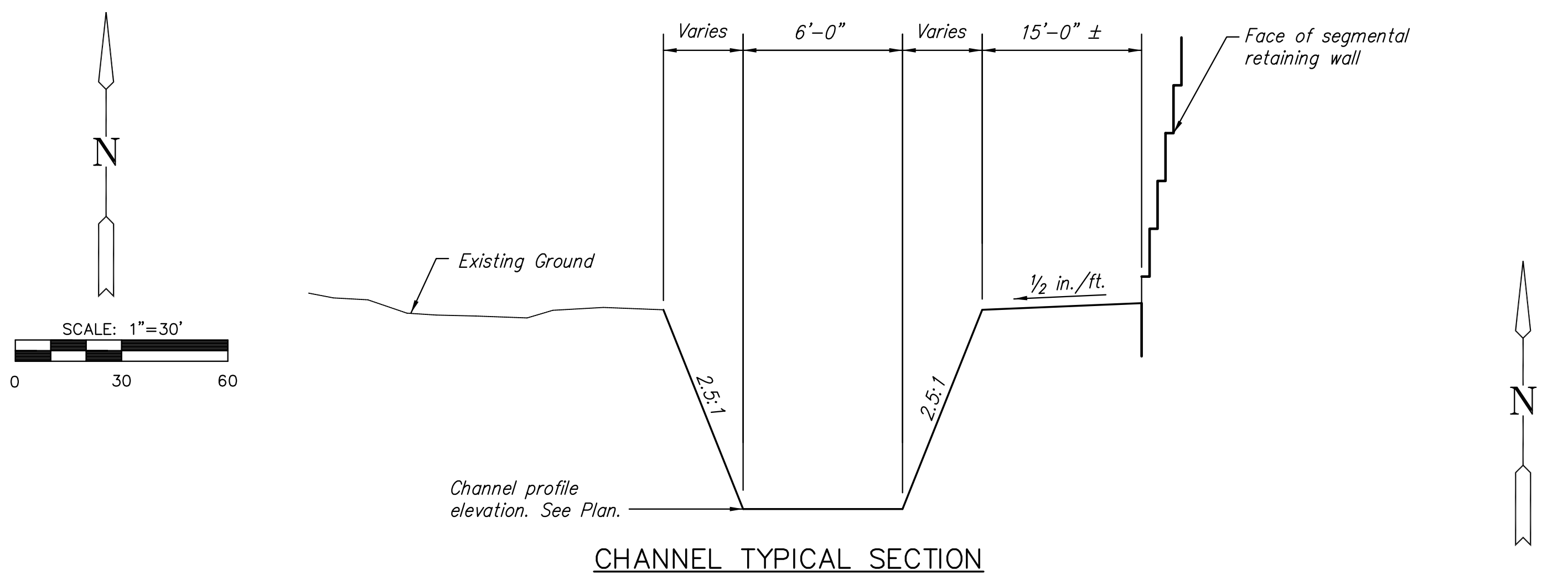
J:\Civil\04238.dwg, Proj_04238_Misc_grading_plan.dwg



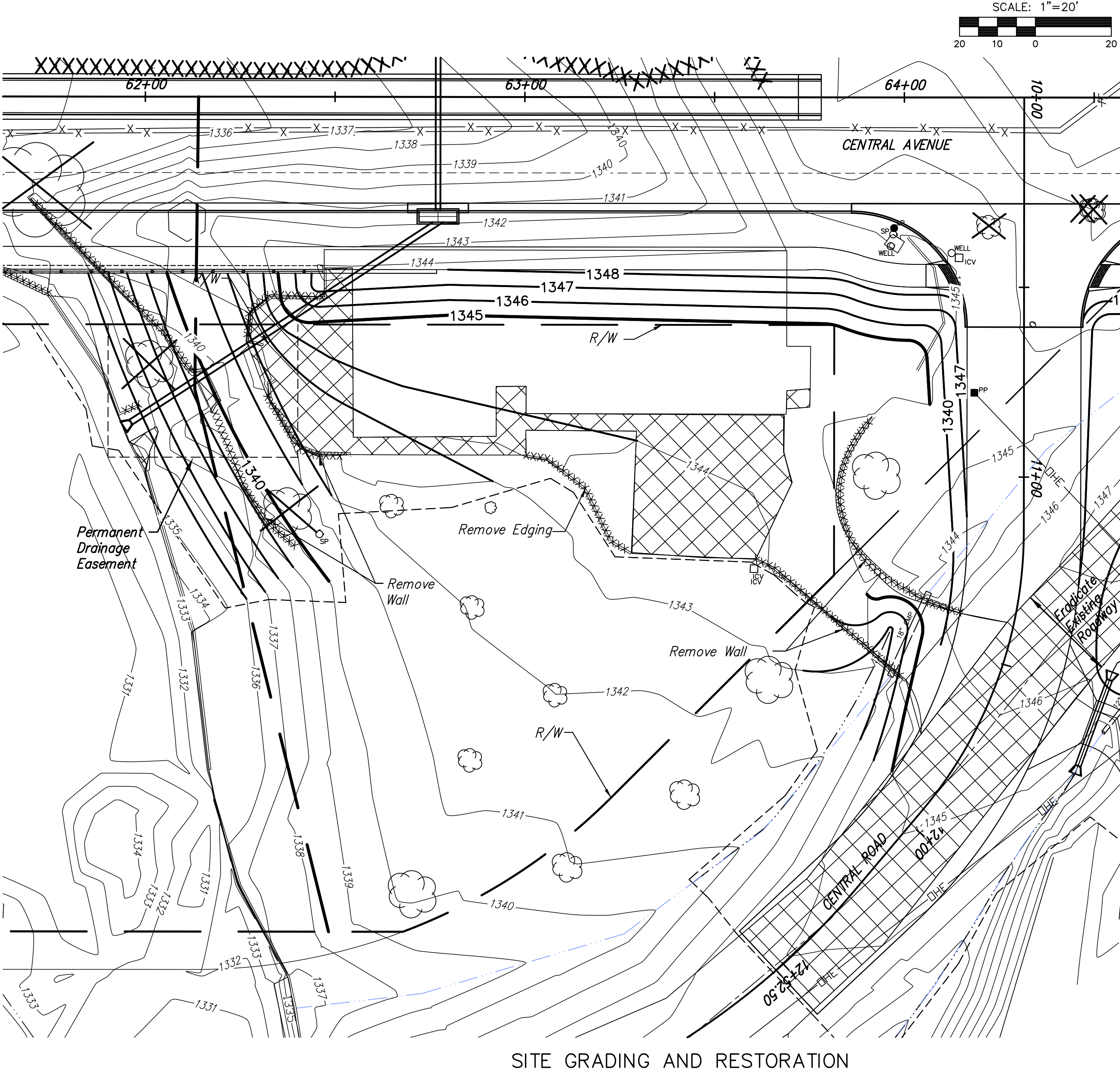
UPLOAD BENCH GRADING PLAN



ROADWAY ERADICATION AND SITE RESTORATION
(Old Central)



CHANNEL TYPICAL SECTION



SITE GRADING AND RESTORATION

PLOTTED: Wednesday, November 14, 2012 @ 02:40PM