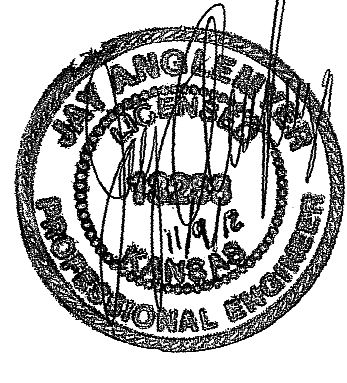
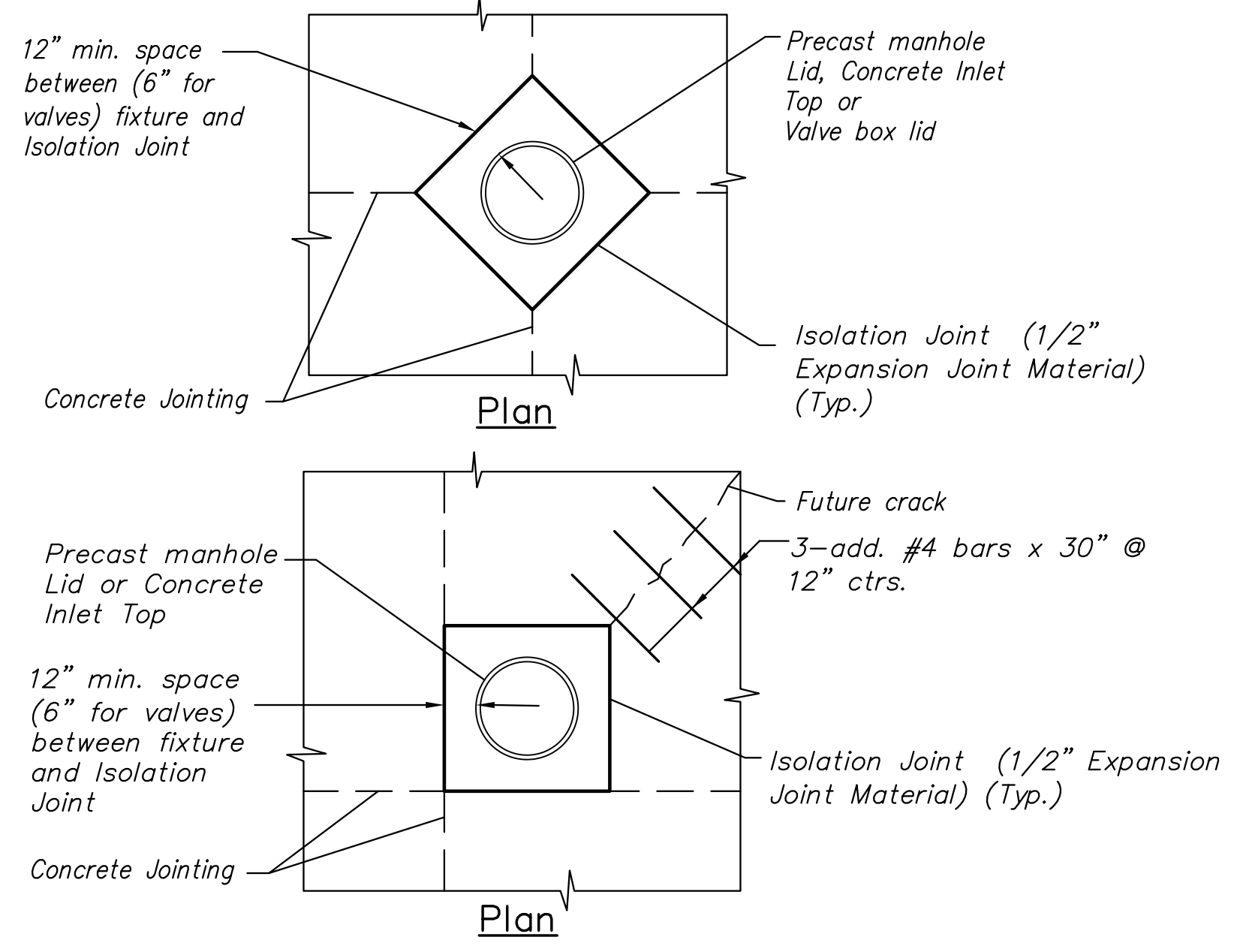


STATE	PROJECT NO.	YEAR	SHEET NO.	SHEETS
KANSAS	87 N-0351-01	2012	84	220

**MKEC**  
ENGINEERING  
CONSULTANTS, INC.  
411 N. WEBB ROAD  
WICHITA, KS. 67206  
316-684-9600

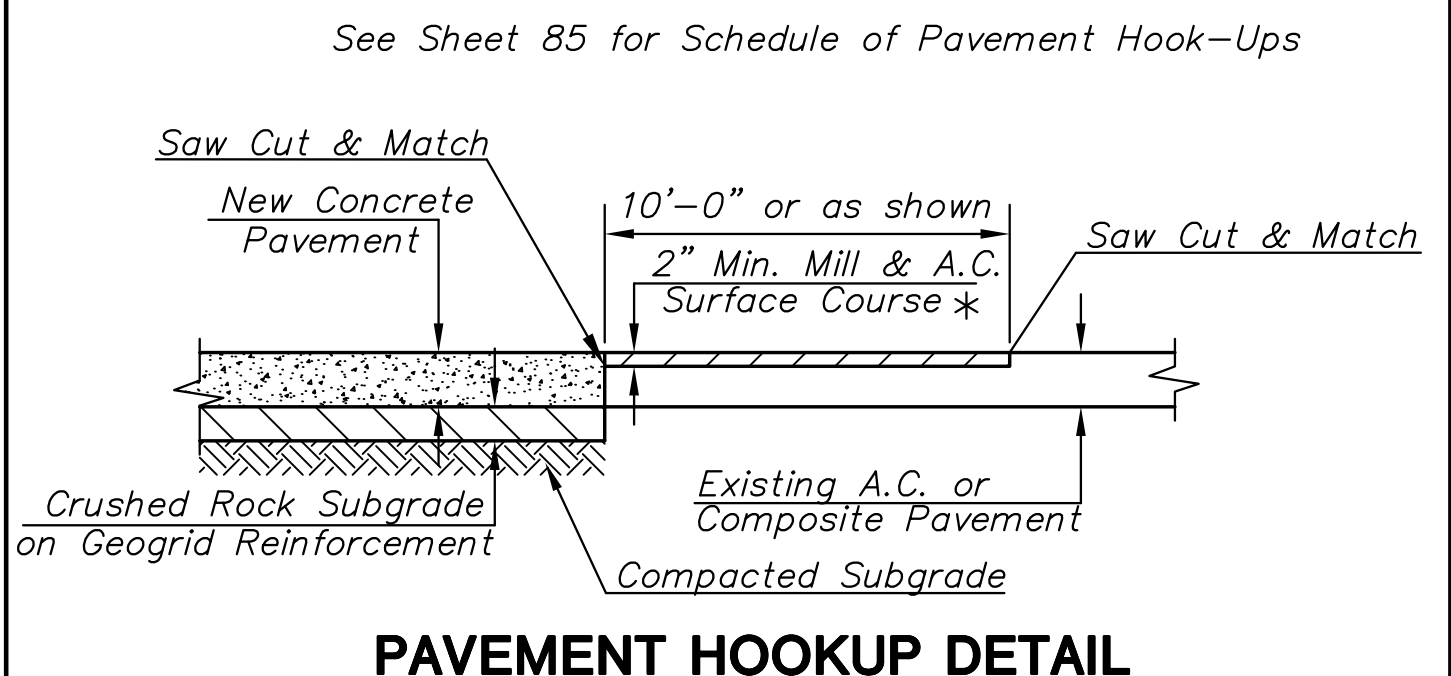


**CENTRAL AVENUE  
IMPROVEMENTS FROM  
135TH ST. W. TO 119TH ST. W.**



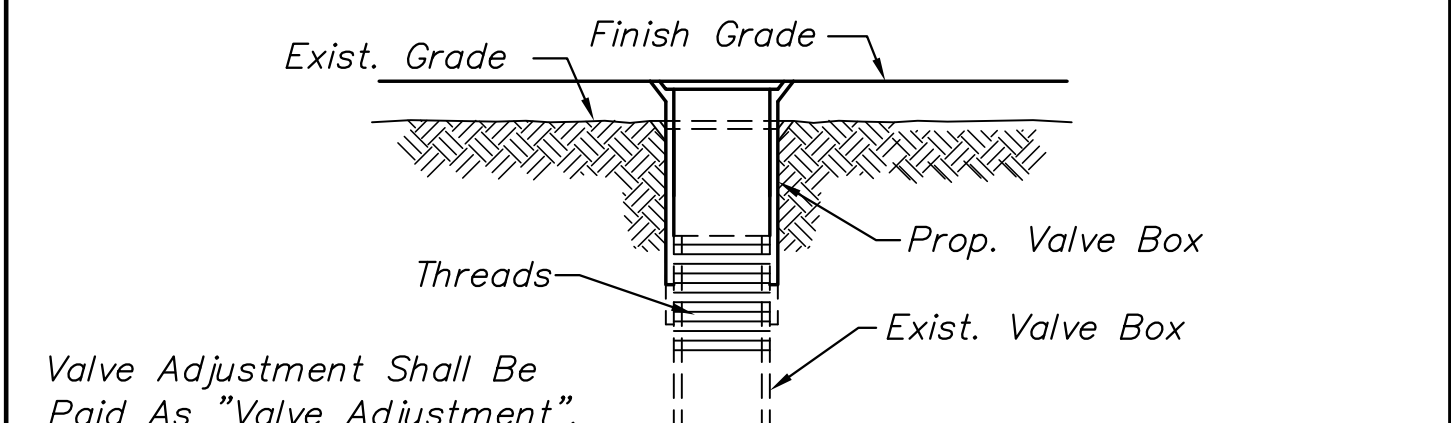
**TYPICAL UTILITY BOX-OUT DETAILS**

Note: Contractor shall construct box-outs around all surface utility fixtures, as shown, when fixtures fall on or near concrete joints, or as directed by the Engineer. All other fixtures shall have an isolation joint or bond breaker between them and concrete pavement. Cost shall be subsidiary.

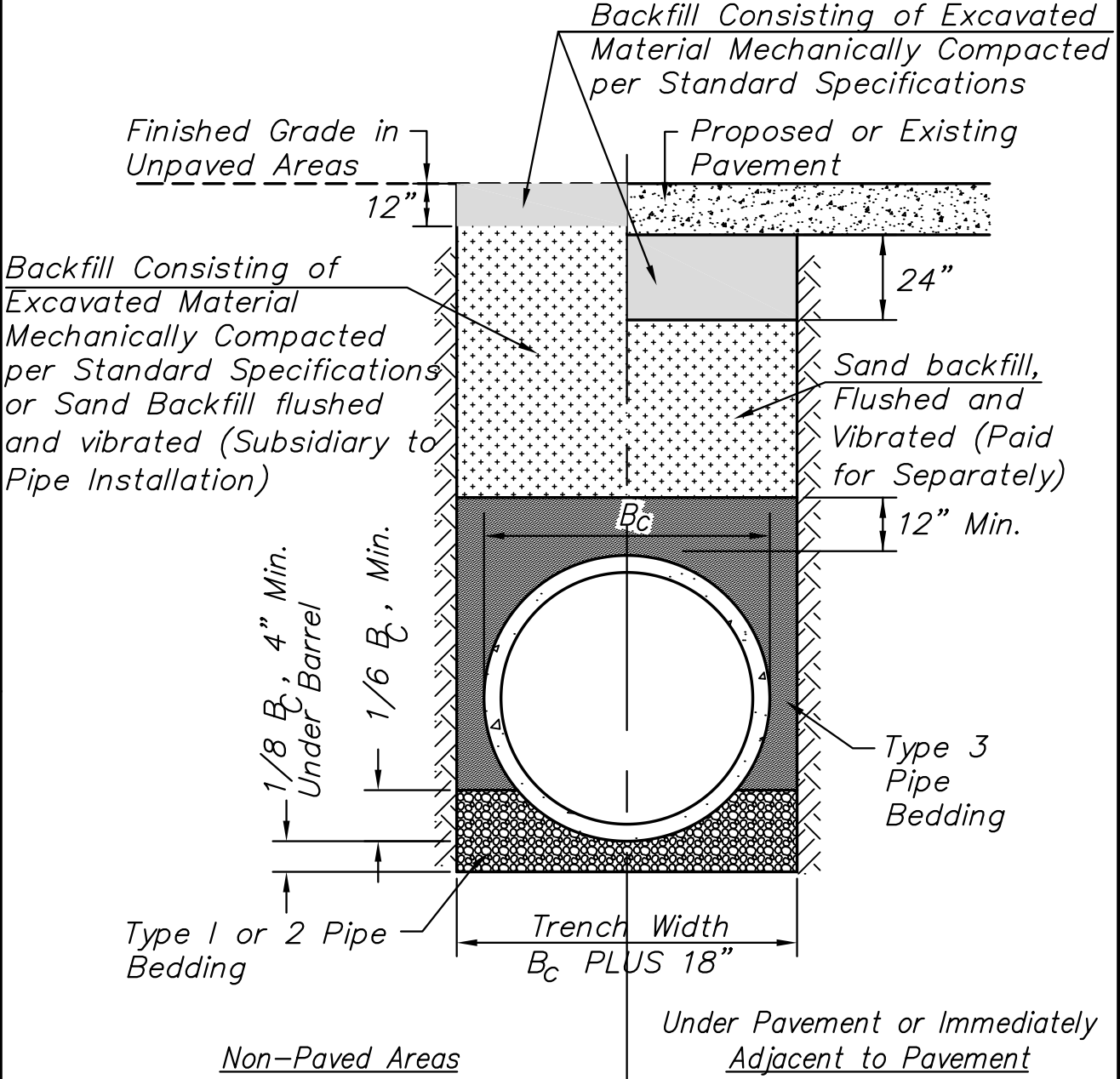


**PAVEMENT HOOKUP DETAIL**

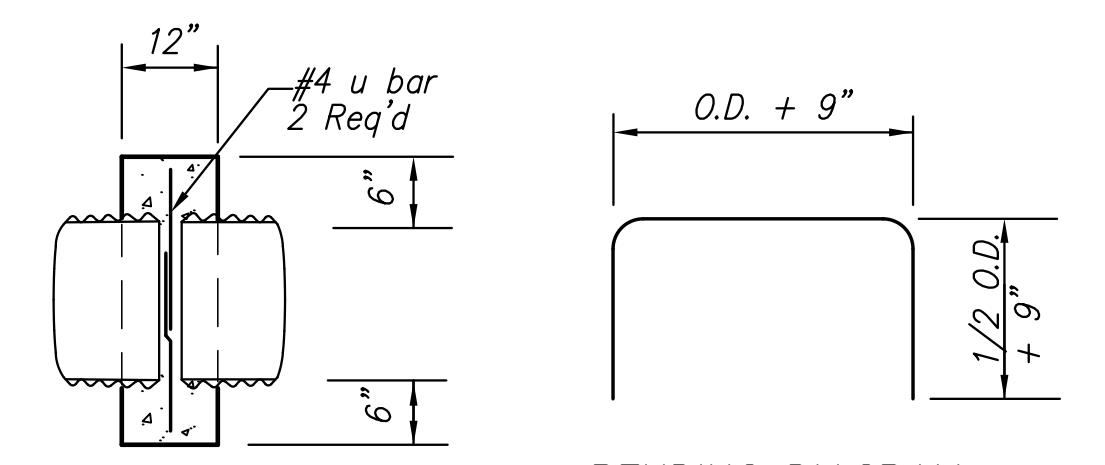
\*On Existing Aggregate Side Roads, use 6" AB-3 Base with 2" SA-1 or AS-1 Surface as determined by the Engineer.



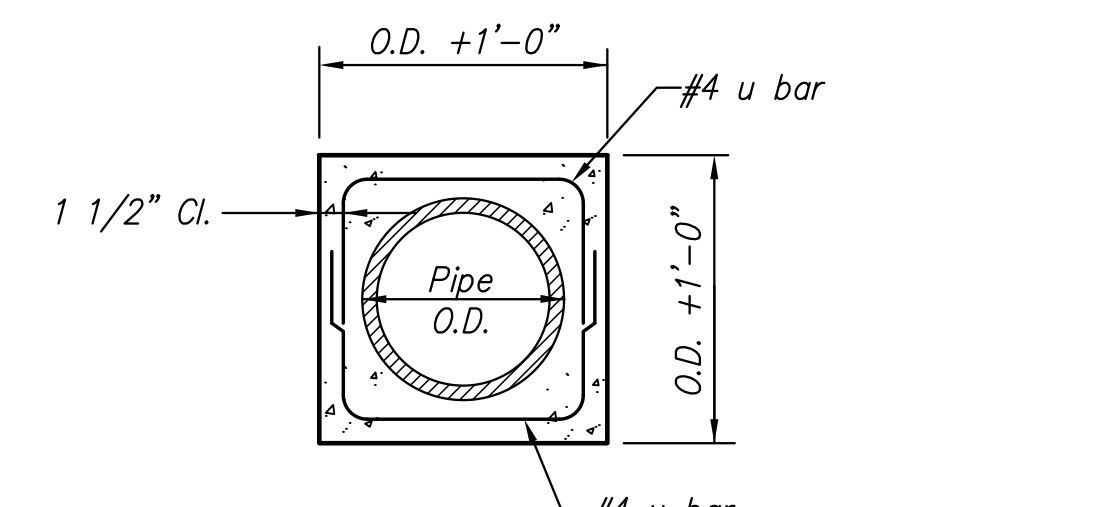
**WATER VALVE BOX ADJUSTMENT DETAIL**



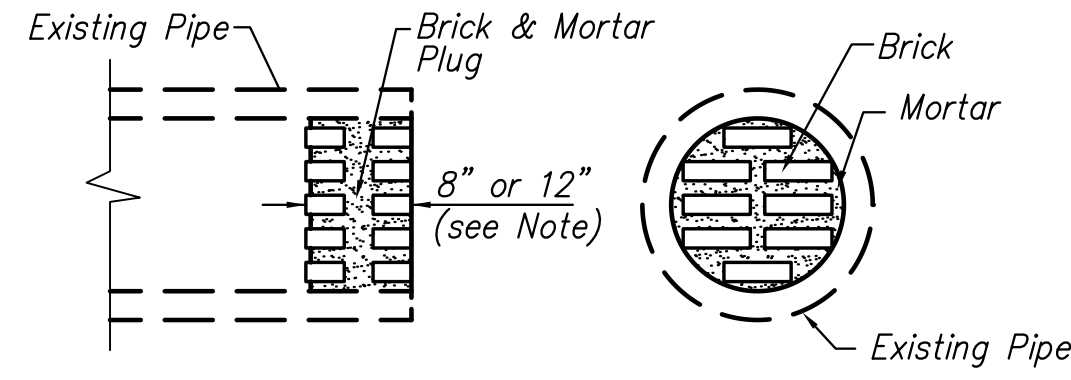
**STORM SEWER TRENCH DETAIL**



**BENDING DIAGRAM**  
All dimensions are out-to-out of bars



**ELEVATION COLLAR DETAIL**

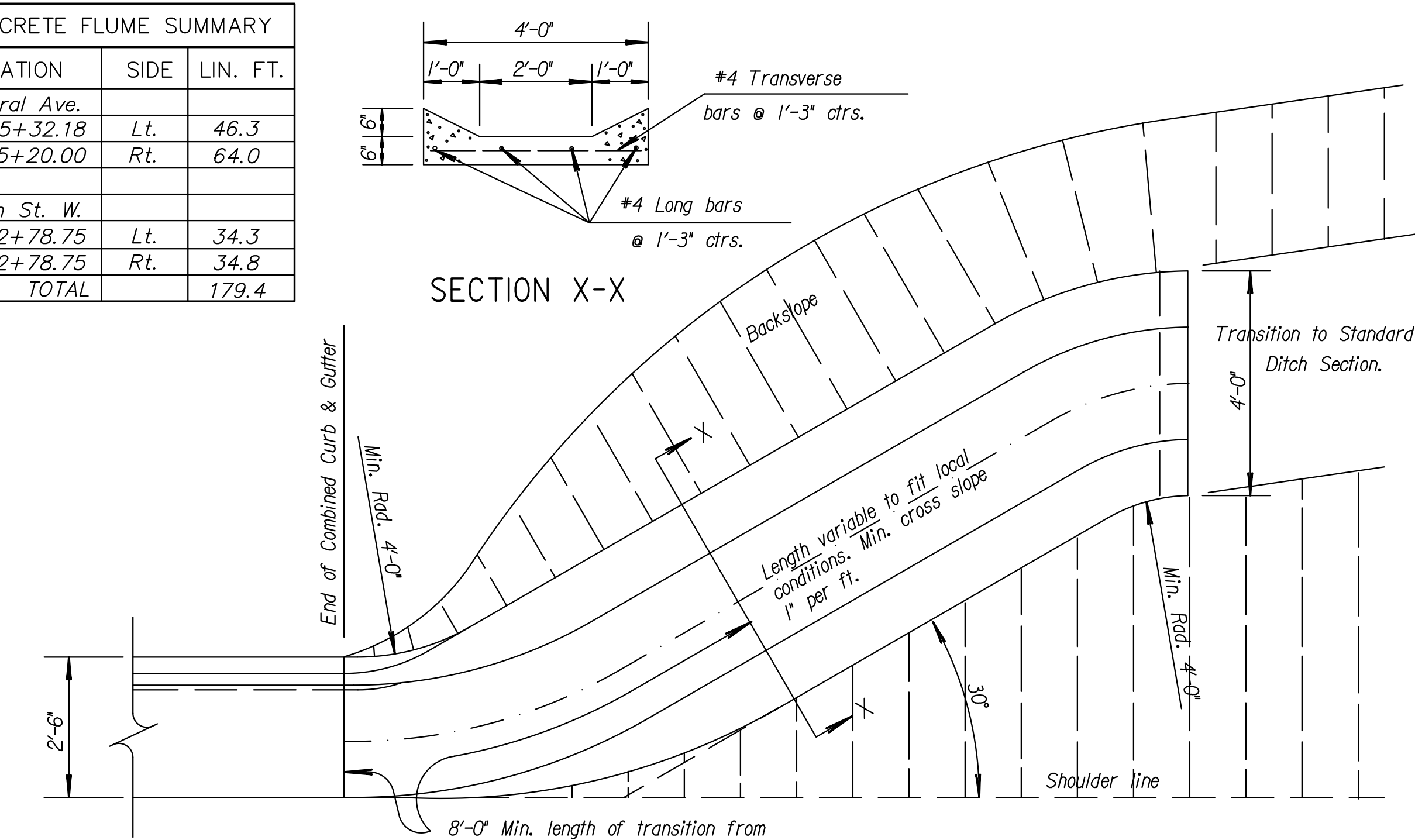


**PIPE PLUGGING DETAIL**

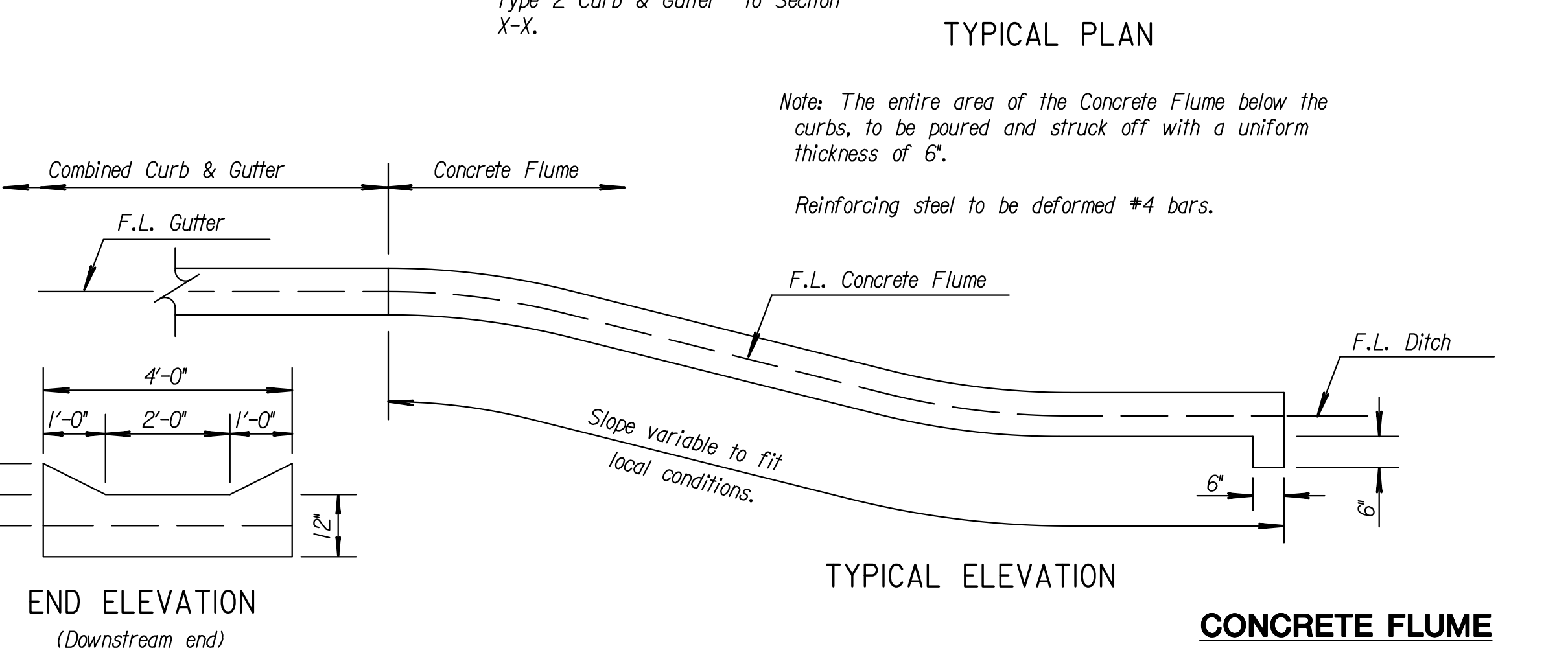
Note: Pipe Plugs Shall Be Constructed Of Brick Masonry, With Construction Requirements And Materials Conforming To The Same Requirements As Specified For A Masonry Construction In The Std. Specs. Pipes Having Diameters Of 18" Or Smaller Shall Be Plugged With 8" Thick Plug. Pipes Having Diameters Larger Than 18" Shall Be Plugged With 12" Thick Plug. The Construction Of Pipe Plugs Shall Not Be Paid For Directly, But Shall Be Considered Subsidiary To Pipe Installation.

The Contractor May Use Other Methods To Plug Existing Pipe If Approved By The Project Engineer.

CONCRETE FLUME SUMMARY			
STATION	SIDE	LIN. FT.	
Central Ave.	Lt.	45+32.18	46.3
	Rt.	45+20.00	64.0
135th St. W.	Lt.	52+78.75	34.3
	Rt.	52+78.75	34.8
TOTAL			179.4



**SECTION X-X**

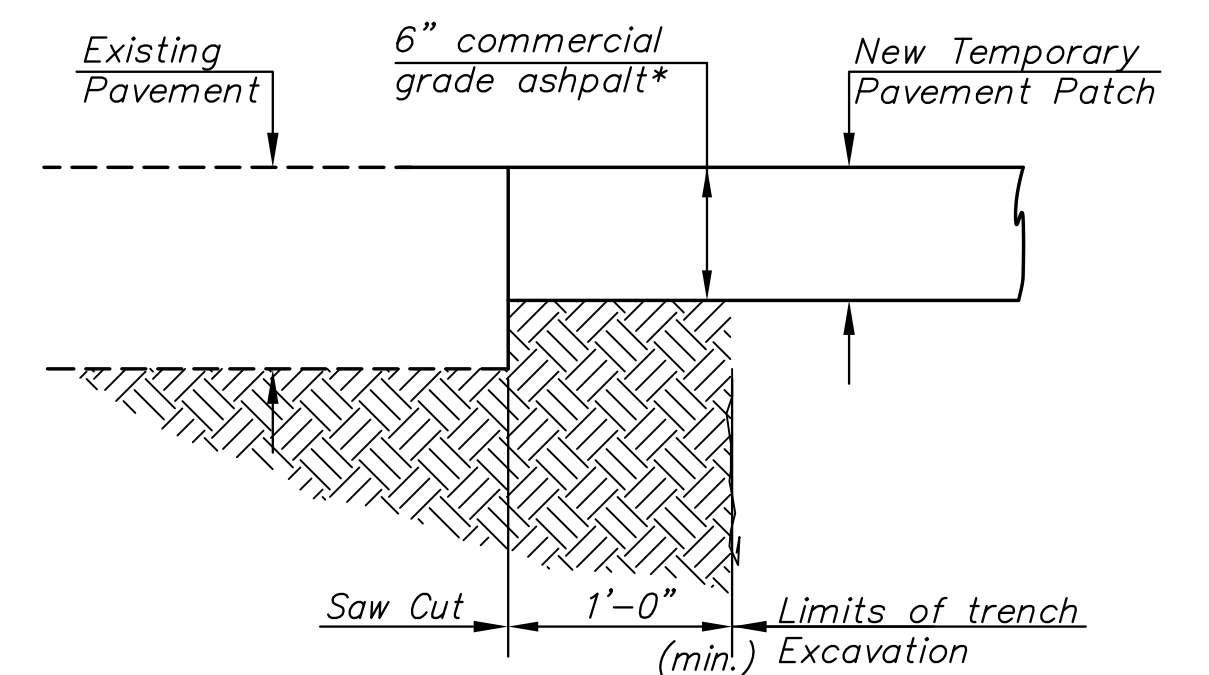


**TYPICAL PLAN**

Note: The entire area of the Concrete Flume below the curbs, to be poured and struck off with a uniform thickness of 6".  
Reinforcing steel to be deformed #4 bars.

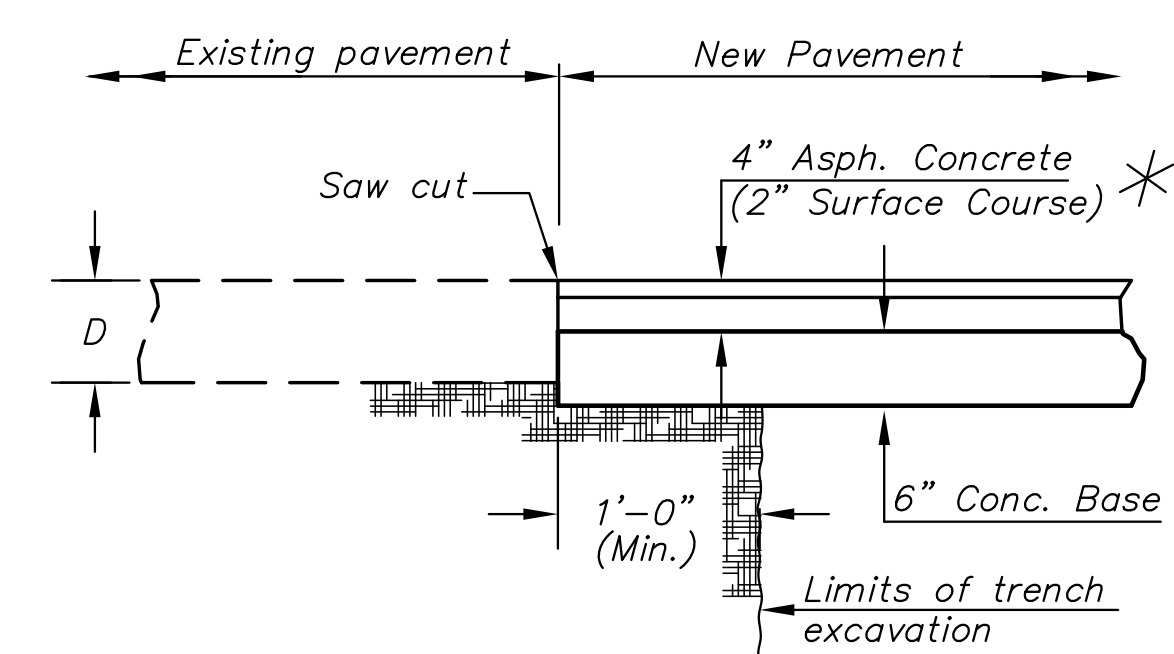
**TYPICAL ELEVATION**

**CONCRETE FLUME**



**TEMPORARY UTILITY PAVEMENT PATCH**

\* Use 4" AB-3 Base with 2" AS-1 or SA-1 Surface (As directed by the City) when in Aggregate Surfaced Areas.



**PERMANENT PAVEMENT PATCH DETAIL**

\* If existing pavement is concrete, substitute eight inches of concrete pavement for pavement shown here. If existing pavement surface is brick, re-use the brick pavers in place of the 4" asphalt surface shown here. See brick paver installation details.

**MISC. DETAILS**  
SHEET TITLE  
472-84017  
PROJECT NUMBER

DESIGN BY: JRA  
DRAWN BY: JSB  
CHECKED BY: JRA

ISSUED: November 9, 2012  
REVISED:

SHEET NO.  
**84 of 220**

PLOTTED: Wednesday, November 14, 2012 @ 02:41PM

J:\Civil\04238.dwg Details\04238 Misc. Dtls.dwg