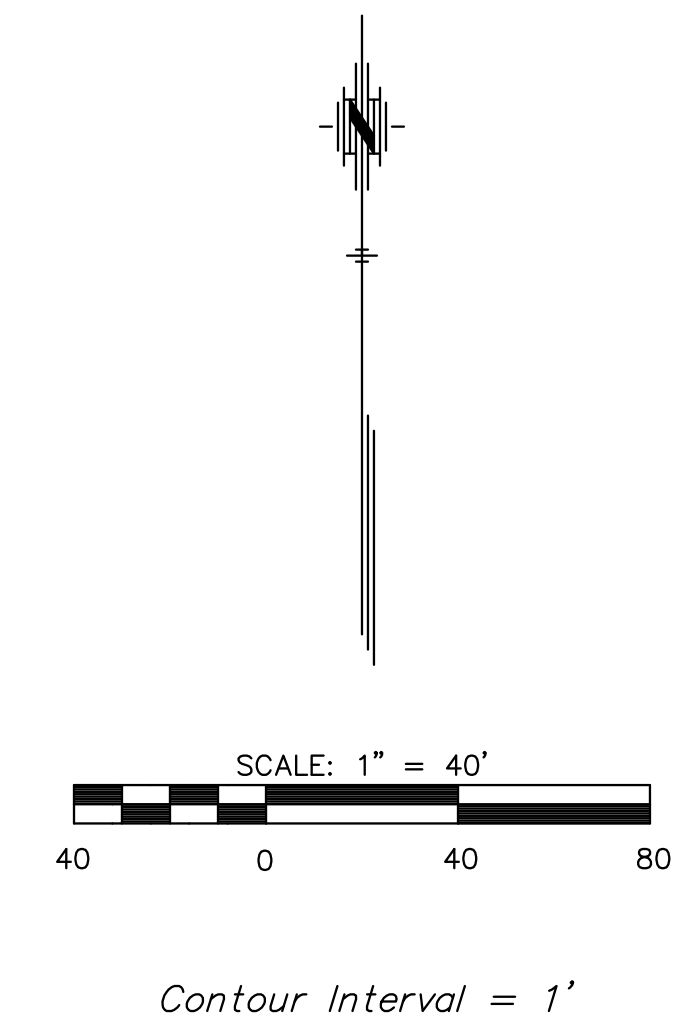
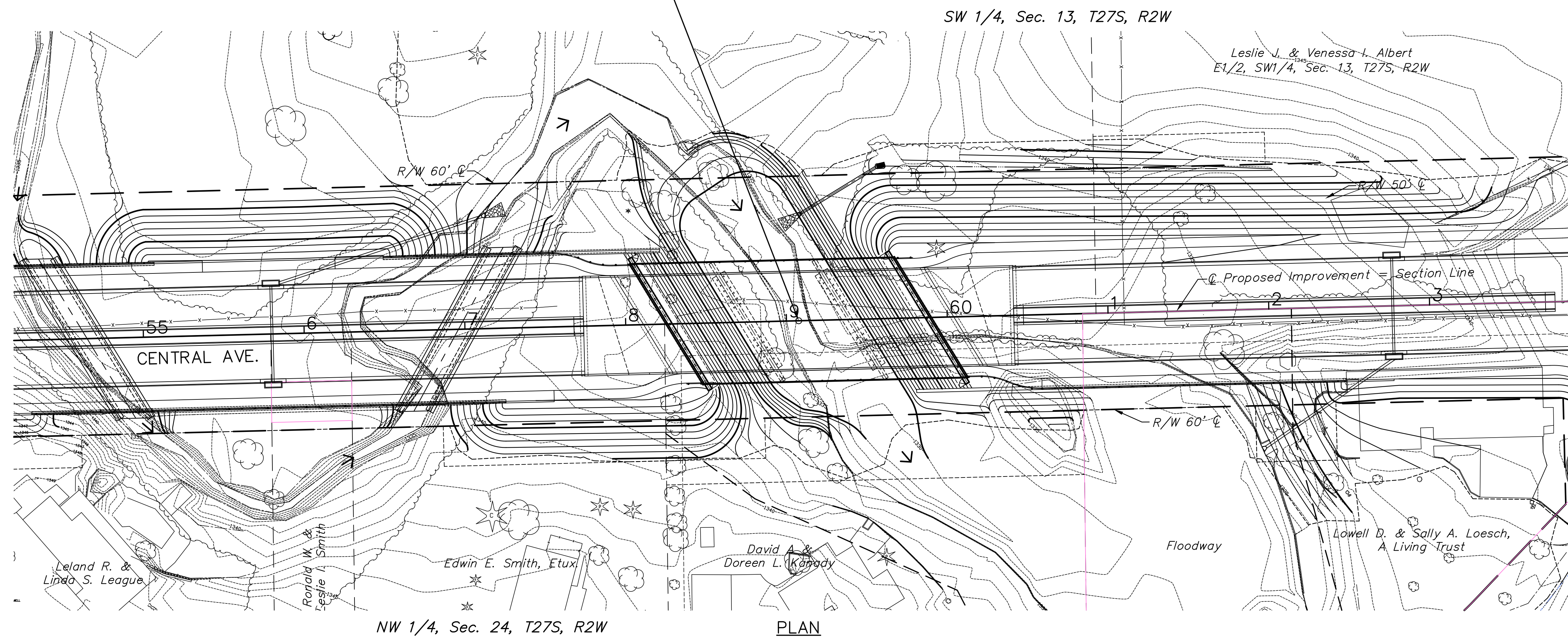


- P.I. Sta. 21+44.34 (Central) = S1/4 Cor. Sec. 14, T27S, R2W
- 3/4" pipe with Sedgwick County cap cast in concrete.
 - N = 1687826.79 E = 1599604.75
 - 3 nails in SE face of a fence post 76.50' ENE
 - 3 nails in East face of a fence corner post 29.60' S
 - PK nail in East face of a power pole 28.85' N

Sta. 59+07.60 Const.
Br. No. 430400870000283
48'-64'-48' R.C.
Haunched Slab Spans
60'-0" Roadway
6' Walkway, Rt. & Lt.
30° Skew. Lt.

- P.I. Sta. 47+80.62 (Central) = SW Cor. Sec. 13, T27S, R2W
- 3/4" pipe with Sedgwick County Cap cast in concrete.
 - N = 1687874.69 E = 1602240.60
 - 3 nails in Northwest face of a high line pole 48.45' NE
 - 3 nails in South face of a fence corner post 21.95' E
 - Mag nail and washer in S. face of a power pole 74.03' WNW

- P.I. Sta. 74+04.47 (Central) = S1/4 Cor. Sec. 13, T27S, R2W
- 3/4" pipe 15" below asphalt road surface.
 - N = 1687940.59 E = 1604863.62
 - 3/4" pipe with PEC cap 50.02' S
 - Chiseled "X" on top of brick entry wall 78.25' SW
 - Nail and shiner in E. face of telephone pole 39.80' NW



HIGHWATER INFORMATION
Highwater elevation is unavailable

- UTILITIES**
- AT&T
Attn: John Fagan
154 N. Broadway, Room 210
Wichita, Ks. 67202
Phone (316) 268-2102
- C.O.W. Water/Sewer
Attn: Greg Lolley
455 N. Main St.
Wichita, Kansas 67202
Phone (316) 268-4555
- C.O.W. Storm Sewer
Attn: Jeff Rupp
455 N. Main St.
Wichita, Kansas 67202
Phone (316) 268-4326
- Kansas Gas Service
Attn: James Coe
1021 E. 26th St. N.
Wichita, Kansas 67219
Phone (888) 482-4950
- Black Hills Energy
Attn: Daryl Keller
2330 N. Hoover Rd.
Wichita, Kansas 67205
Phone (316) 941-1654
- Westar Energy
Attn: Miles Capps
1900 E. Central
Wichita, Kansas 67201
Phone (316) 261-6824
- Cox Communications
Attn: Jeff Capps
901 S. George Washington Blvd.
Wichita, Kansas 67211
Phone (316) 260-7475
- Rose Rock Midstream, L.P.
1223 N. Rock Rd.
Wichita, Kansas 67206
Phone (316) 315-0204

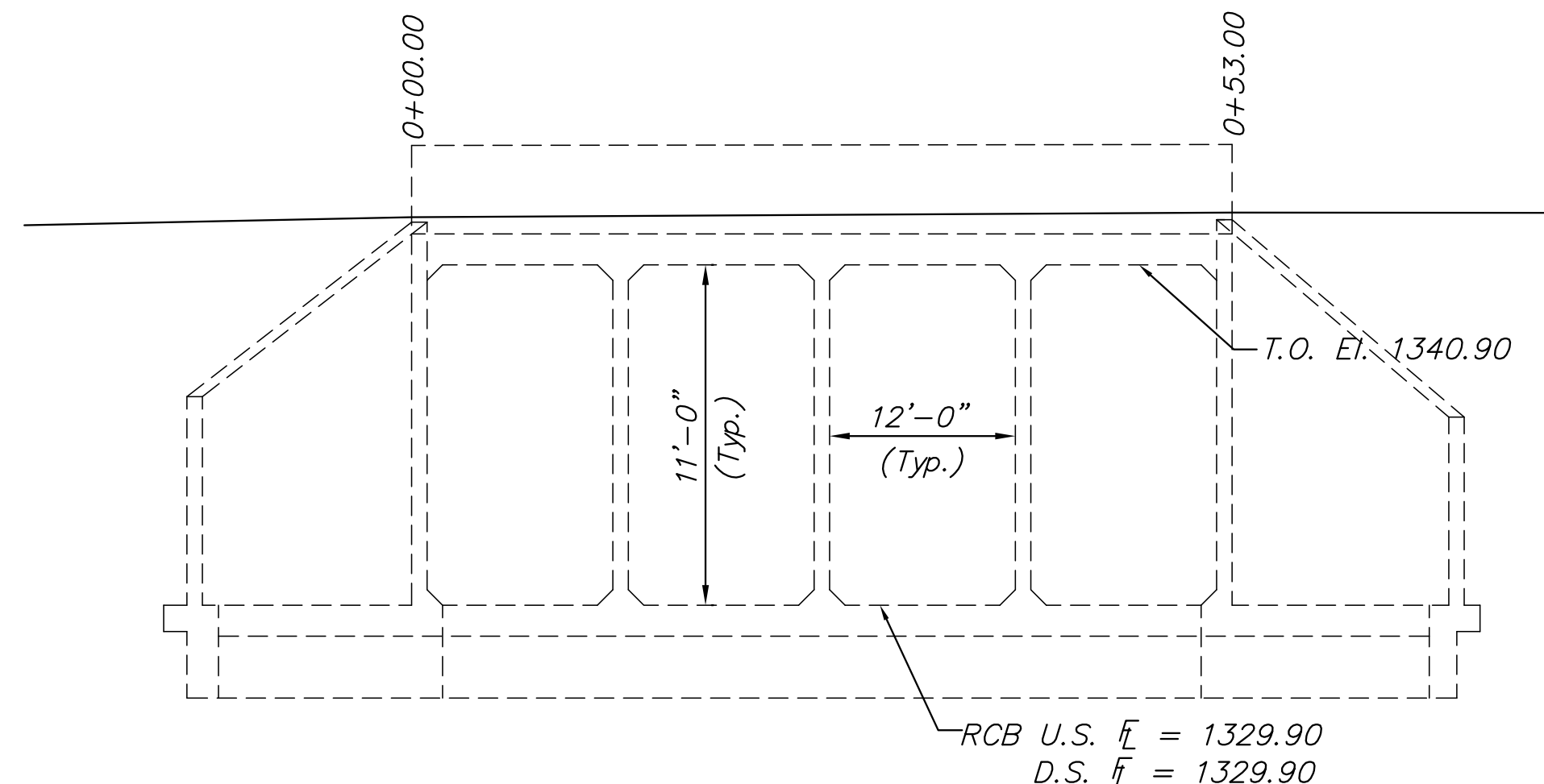
**CENTRAL AVENUE
IMPROVEMENTS FROM
135TH ST. W. TO 119TH ST. W.**

**CENTRAL AVE.
BRIDGE
CONTOUR MAP**
SHEET TITLE
472-84017
PROJECT NUMBER

DESIGN BY: JRA
DRAWN BY: DMU
CHECKED BY: JRA

ISSUED: November 9, 2012
REVISED:

SHEET NO.
88 of 220



EXISTING NORTH FORK CALFSKIN CREEK
Waterway Opening of Exist. 4'-12'X11' RCB (Downstream)
At \bar{C} Sta. 62+00.0, 279.1' Rt. (Central Ave)
Area = 528.0 sq. ft. (RCB)