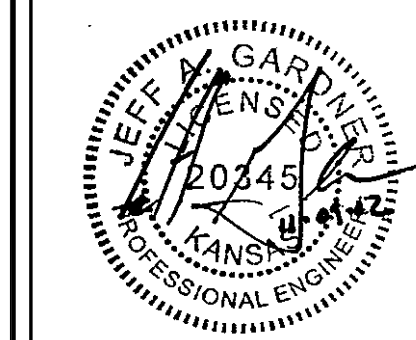


STATE	PROJECT NO.	YEAR	SHEET NO.	SHEETS
KANSAS	87 N-0351-01	2012	96	220

**MKEC**  
ENGINEERING  
CONSULTANTS, INC.

411 N. WEBB ROAD  
WICHITA, K.S. 67206  
316-684-9600



**CENTRAL AVENUE  
IMPROVEMENTS FROM  
135TH ST. W. TO 119TH ST. W.**

**CENTRAL AVE  
BRIDGE PIER  
REINFORCING  
DETAIL 2**

SHEET TITLE  
472-84017  
PROJECT NUMBER

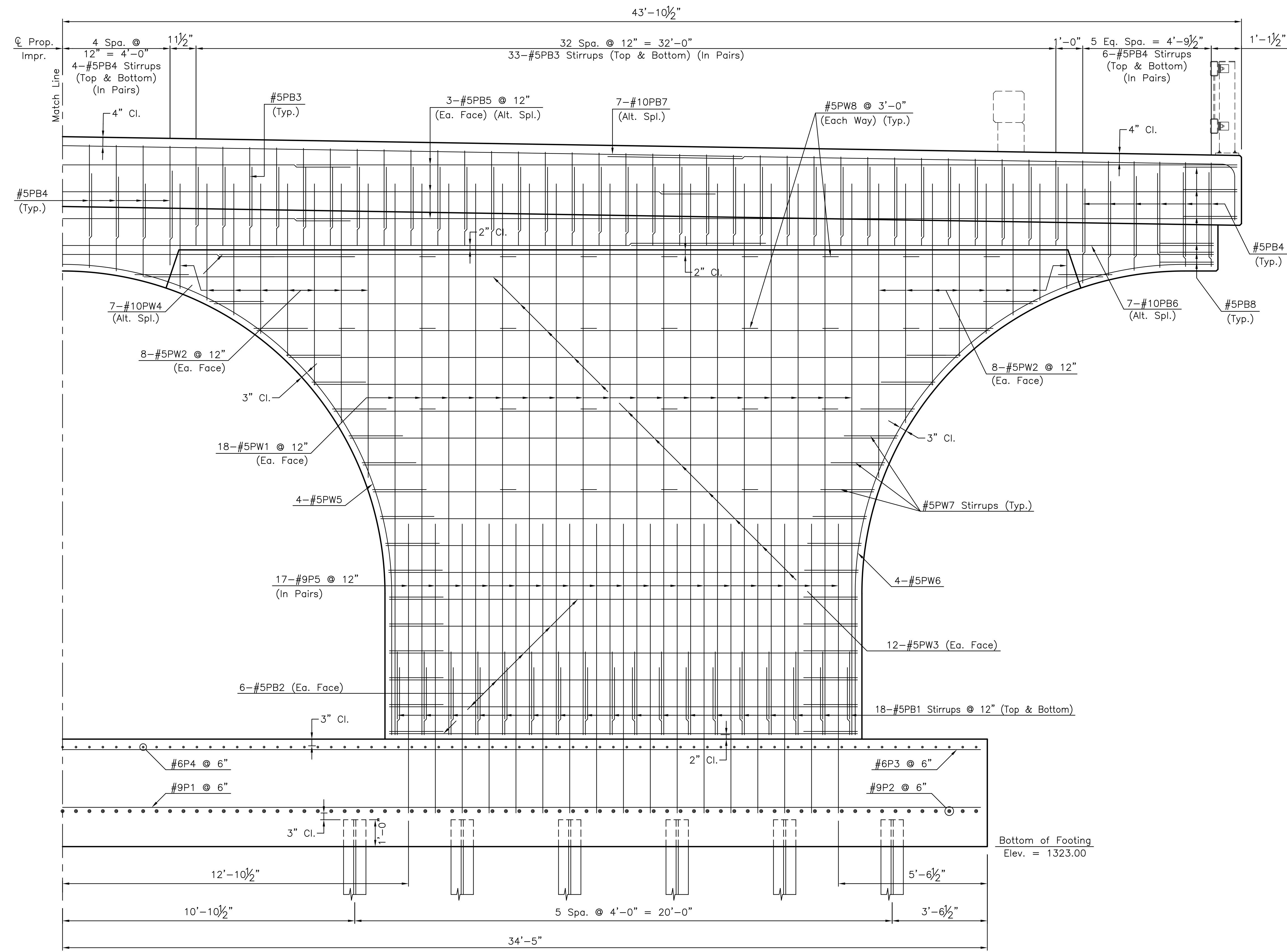
DESIGN BY: JAG  
DRAWN BY: DMU  
CHECKED BY: KJS

ISSUED  
November 9, 2012

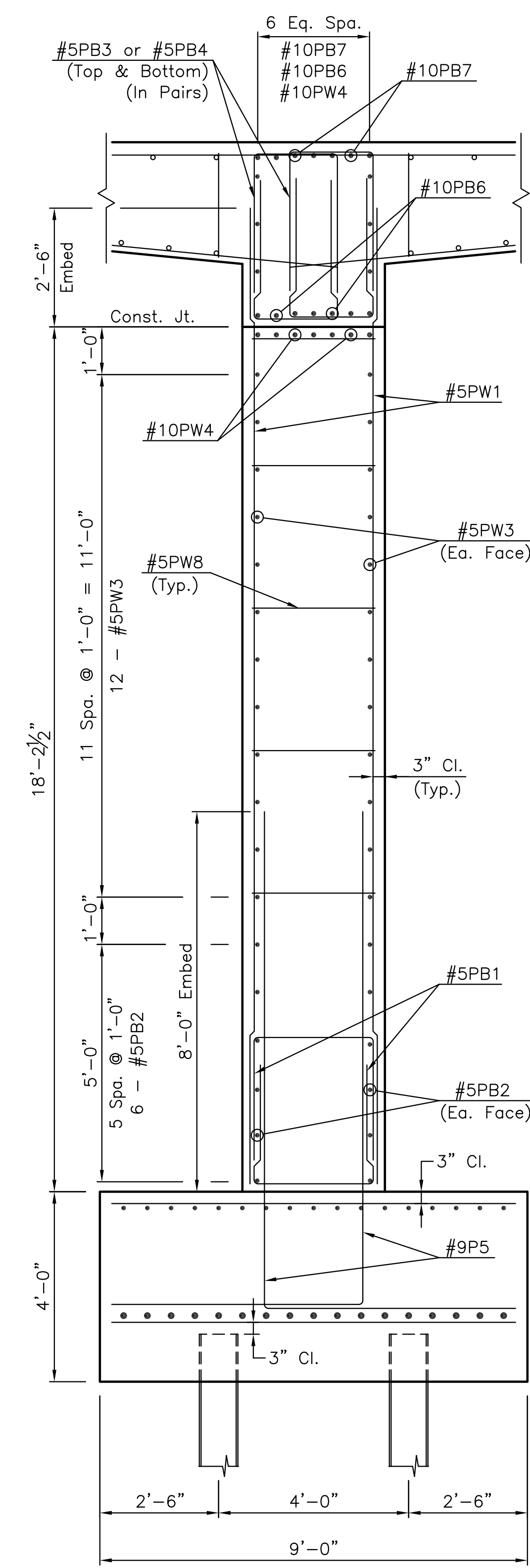
REVISED

SHEET NO.  
96 of 220

NOTE:  
See Superstructure Details  
sheet 98 for deck reinforcing.



**HALF ELEVATION**  
(Measured Along  $\mathcal{C}$  Pier)  
(Looking Up Station, Pier No. 2)  
(Looking Down Station, Pier No. 1)  
†† Cross slope perpendicular to  $\mathcal{C}$  Prop. Impr.



**TYPICAL SECTION**

PLOTTED: Wednesday, November 14, 2012 @ 02:43PM

J:\Civil\04238\Draws\Bridge\04238PIER4\_Central.dwg