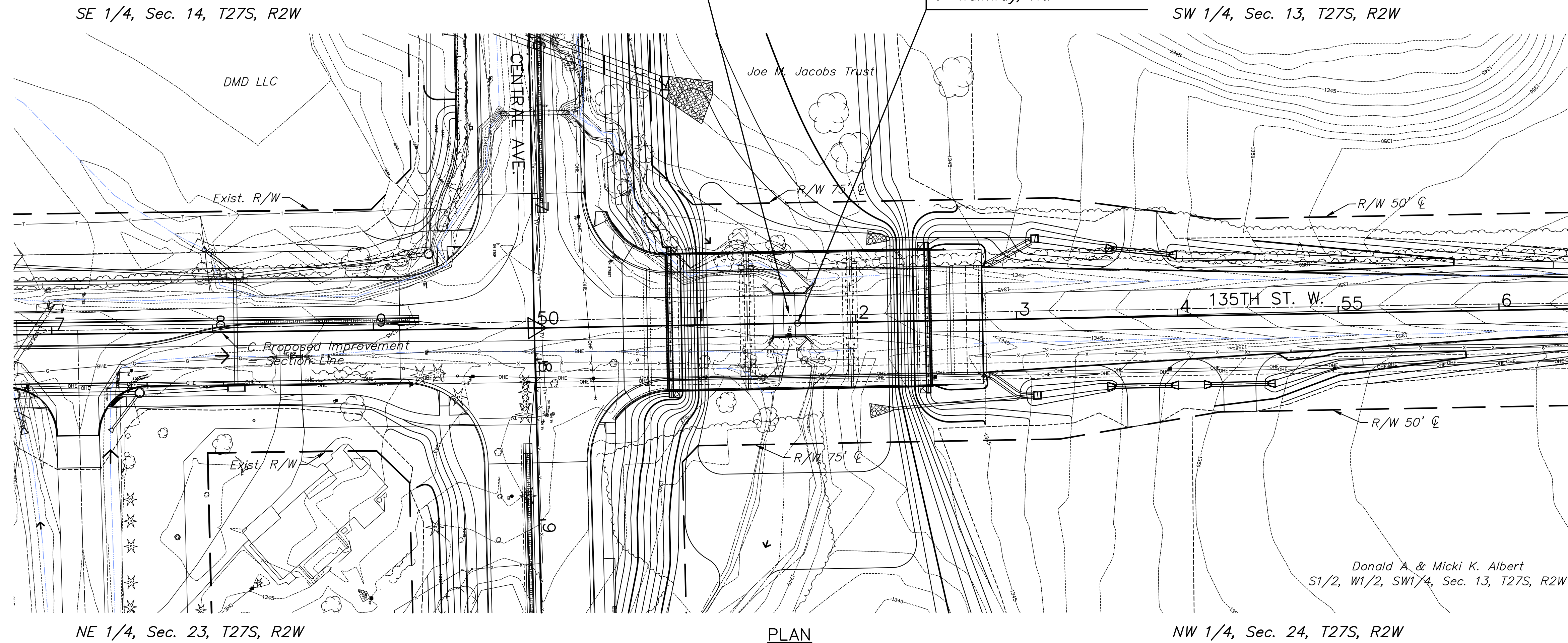


- P.I. Sta. 23+56.10 (135th) = W1/4 Cor. Sec. 24, T27S, R2W
- 3/4" pipe over stone
  - N = 1685231.01 E = 1602274.63
  3. Head of 60d nail in blazed Hedge tree 23.25' W
  - 3 nails in West face high line pole 63.00' NNE
  - Bottom of bent 1.5" iron pipe 50.15' E

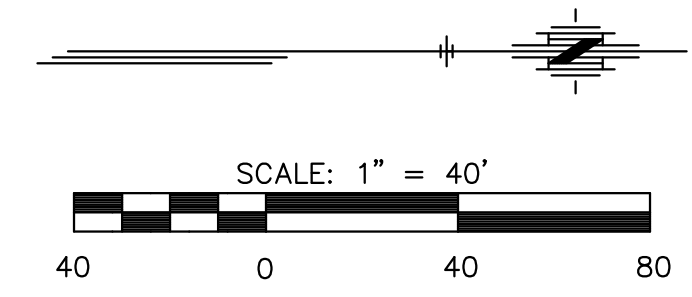
Sta. 51+58.70 Remove  
Br. No. 00000000871560  
3-6'x6'x28' R.C.B.  
24'-0" Roadway  
Demolition Category "A"

Sta. 51+64.50 Const.  
Br. No. 430400870000284  
48'-64'-48' R.C.  
Haunched Slab Spans  
65'-6" Roadway  
10' Bicycle Path, Lt. &  
6' Walkway, Rt.

- P.I. Sta. 76+32.40 (135th) = W1/4 Cor. Sec. 13, T27S, R2W
- 3/4" pipe with Sedgwick County cap cast in concrete
  - N = 1690506.64 E = 1602192.01
  - 60d nail in NW face of a Locust tree 42.15' ENE
  - "V" cut in first rib on West end of a CMAC 51.95' SW
  - Center of City of Wichita benchmark disc 39.90' ESE



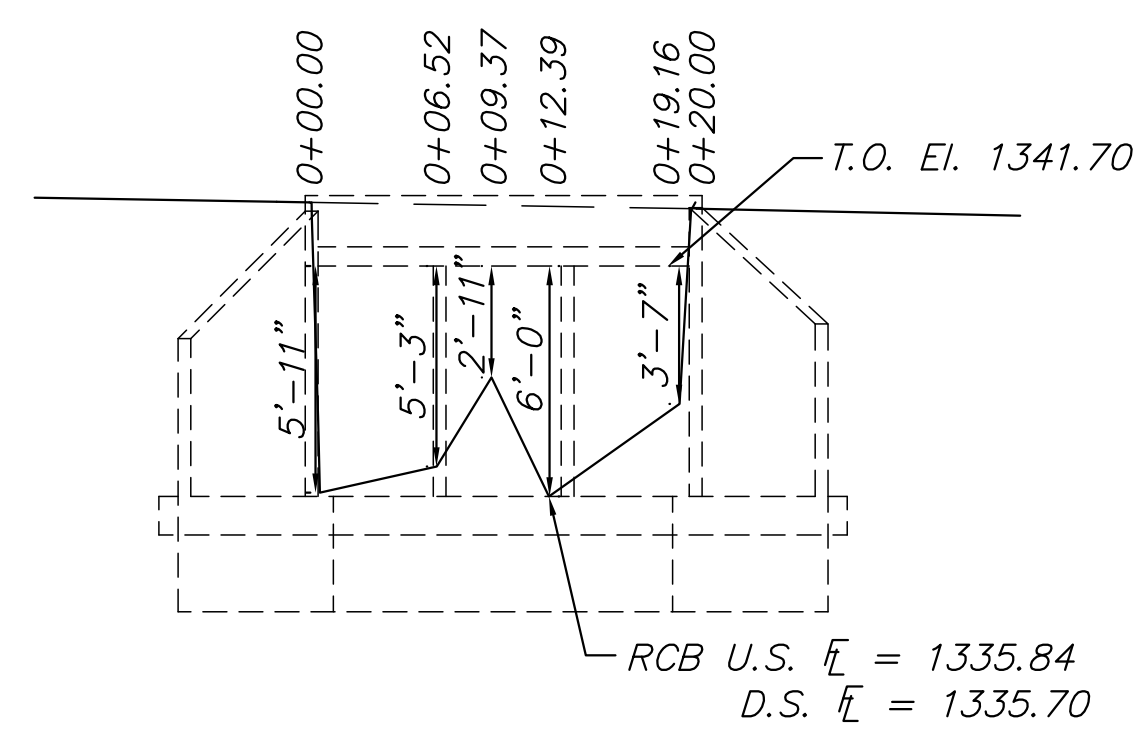
PLAN



Contour Interval = 1'

**HIGHWATER INFORMATION**  
Highwater elevation is unavailable

- UTILITIES**
- AT&T  
Attn: John Fagan  
154 N. Broadway, Room 210  
Wichita, Ks. 67202  
Phone (316) 268-2102
- C.O.W. Water/Sewer  
Attn: Greg Lolley  
455 N. Main St.  
Wichita, Kansas 67202  
Phone (316) 268-4555
- C.O.W. Storm Sewer  
Attn: Jeff Rupp  
455 N. Main St.  
Wichita, Kansas 67202  
Phone (316) 268-4326
- Kansas Gas Service  
Attn: James Coe  
1021 E. 26th St. N.  
Wichita, Kansas 67219  
Phone (888) 482-4950
- Black Hills Energy  
Attn: Daryl Keller  
2330 N. Hoover Rd.  
Wichita, Kansas 67205  
Phone (316) 941-1654
- Westar Energy  
Attn: Miles Capps  
1900 E. Central  
Wichita, Kansas 67201  
Phone (316) 261-6824
- Cox Communications  
Attn: Jeff Capps  
901 S. George Washington Blvd.  
Wichita, Kansas 67211  
Phone (316) 260-7475
- Rose Rock Midstream, L.P.  
1223 N. Rock Rd.  
Wichita, Kansas 67206  
Phone (316) 315-0204



**EXISTING NORTH FORK CALFSKIN CREEK**  
Waterway Opening of Exist. 3-6'x6' RCB (Upstream)  
At  $\bar{C}$  Sta. 51+63.75 (135th Street)  
Area = 108.0 sq. ft.

**CENTRAL AVENUE  
IMPROVEMENTS FROM  
135TH ST. W. TO 19TH ST. W.**

**135TH ST WEST  
BRIDGE  
CONTOUR MAP**  
SHEET TITLE  
472-84017  
PROJECT NUMBER

DESIGN BY: JRA  
DRAWN BY: DMU  
CHECKED BY: JRA

ISSUED: November 9, 2012  
REVISED:

SHEET NO.  
**102 of 220**