

**CENTRAL AVENUE
IMPROVEMENTS FROM
135TH ST. W. TO 19TH ST. W.**

**135TH ST. WEST
BRIDGE
CONSTRUCTION
LAYOUT**
SHEET TITLE
472-84017
PROJECT NUMBER

DESIGN BY
JRA
DRAWN BY
DMU
CHECKED BY
KJS

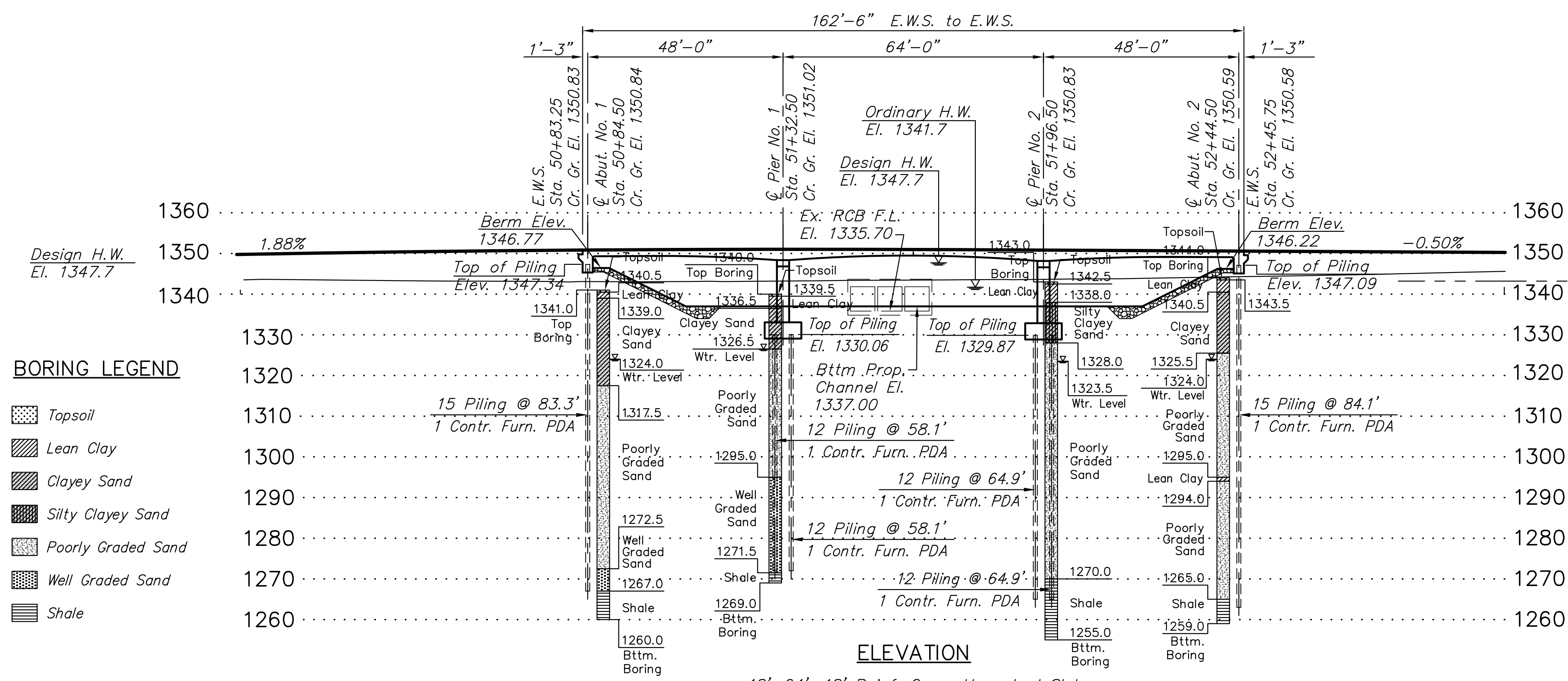
ISSUED
November 9, 2012
REVISED

SHEET NO.
103 of 220

DRAINAGE DATA

Drainage Area	2.4	Sq. Mi.
Design Frequency	100	Years
Design Discharge (Q ₁₀₀)	8,563	cfs
Design High Water Elevation	1347.7	Ft.
Change in Design Backwater	0.9	Ft.
Design Backwater Elevation	1346.8	Ft.
Overtopping Elevation (Sta. 43+13)	1347.5	Ft.
Overtopping Discharge	> 8,690	cfs
Overtopping Frequency	> 500	Years
Discharge at Q ₁₀₀	8,563	cfs
Change in Backwater at Q ₁₀₀	-0.3	Ft.
Backwater Elevation at Q ₁₀₀	1349.6	Ft.
Historic High Water Elevation	Unknown	
Ordinary High Water Elevation	1341.7	Ft.
Total Waterway Provided	1,162	Sq. Ft.
Design Waterway Provided	1,160	Sq. Ft.
Estimated Ordinary High Water Discharge	2,974	cfs

The thermal movement at the abutment is ± 1/4"

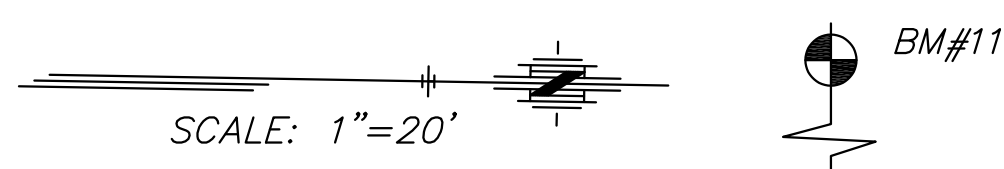


BORING LEGEND

- Topsoil
- Lean Clay
- Clayey Sand
- Silty Clayey Sand
- Poorly Graded Sand
- Well Graded Sand
- Shale

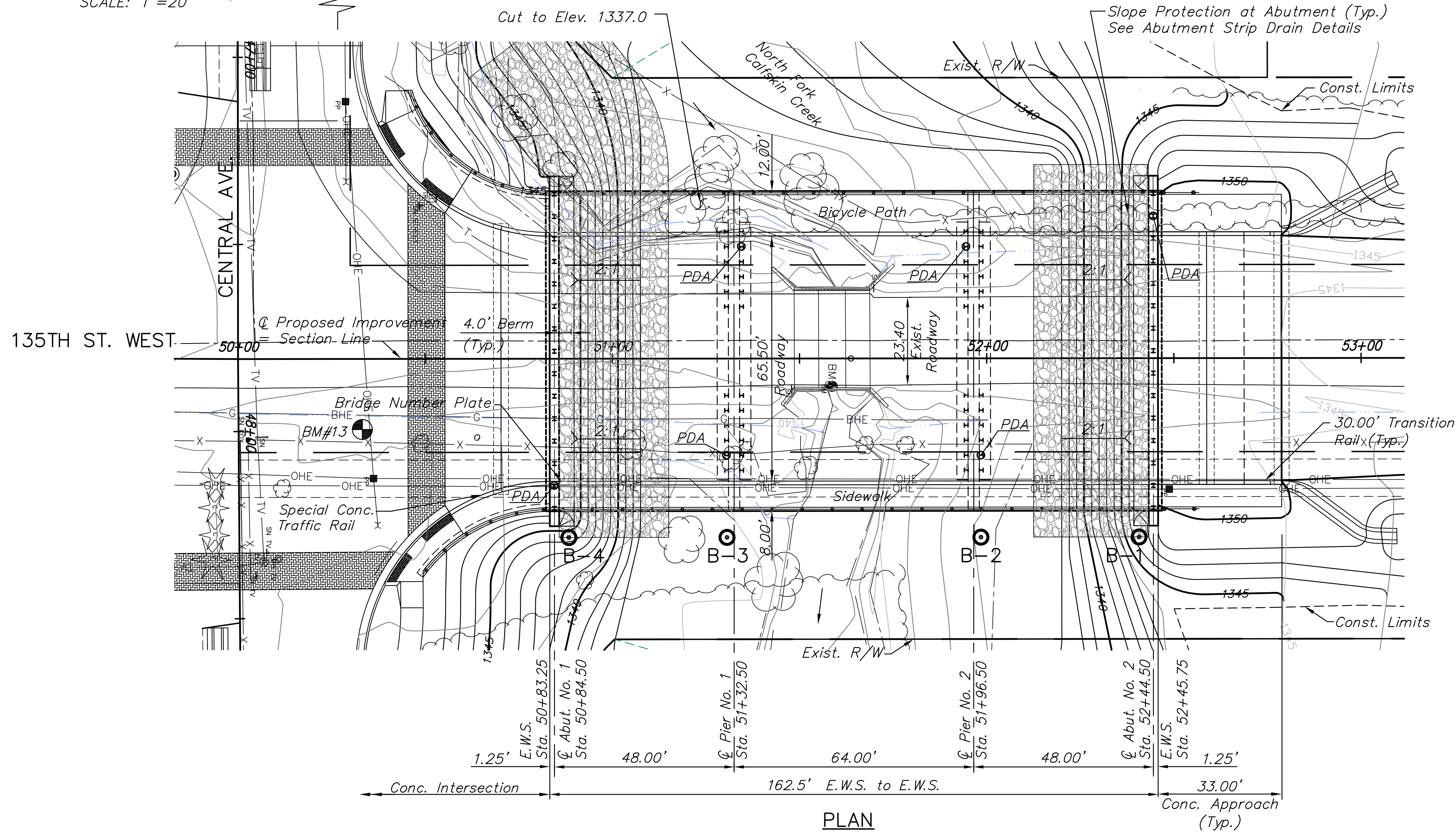
ELEVATION

48'-64'-48' Reinf. Conc. Haunched Slab
Pile Bent Abutments & Piers
65'-6" Roadway with 10'-0" Bicycle Path Lt. & 6'-0" Walkway Rt.

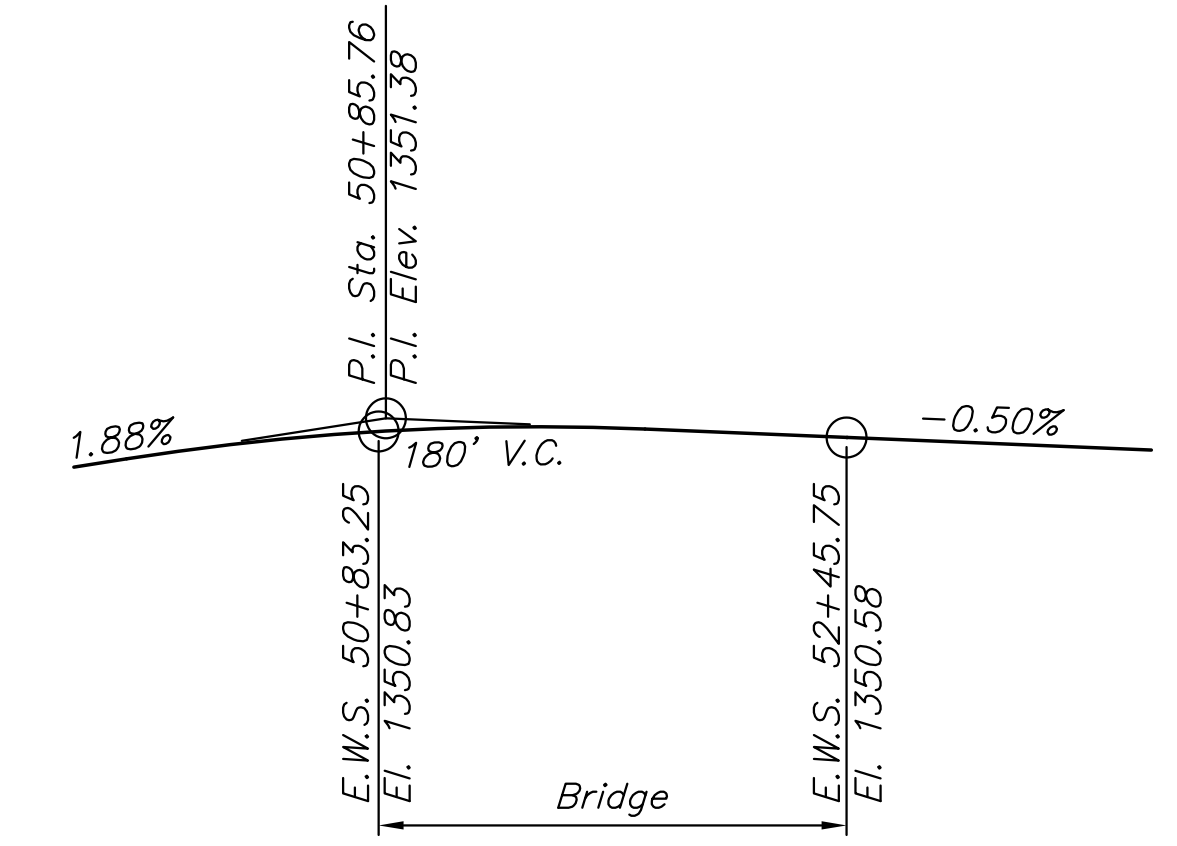


BM#11 Stepped spike in South face of 2nd power pole West of 135th St. West on North side of Central, 344' West of centerline 135th St. West and 26' North of centerline Central. @ Sta. 50+26.0, 344.0' Lt. Elev. = 1343.70 (NAVD88)(155.80)

BM#13 City of Wichita benchmark disc on Northeast corner of 135th Street West and Central, 33' North of centerline Central and 26' East of centerline 135th St. West. @ Sta. 50+33.0, 26.0' Rt. Elev. = 1347.40 (NAVD88)(159.50)



PLAN



CROWN GRADE PROFILE