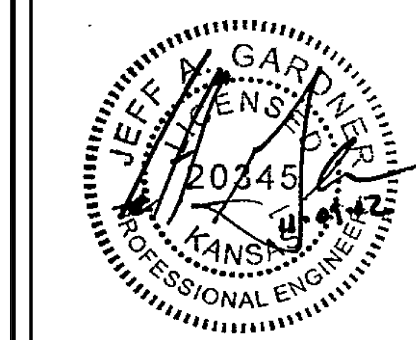


| STATE | PROJECT NO. | YEAR | SHEET NO. | SHEETS |
|--------|--------------|------|-----------|--------|
| KANSAS | 87 N-0351-01 | 2012 | 110 | 220 |

MKEC
ENGINEERING
CONSULTANTS, INC.

411 N. WEBB ROAD
WICHITA, K.S. 67206
316-684-9600



**CENTRAL AVENUE
IMPROVEMENTS FROM
135TH ST. W. TO 119TH ST. W.**

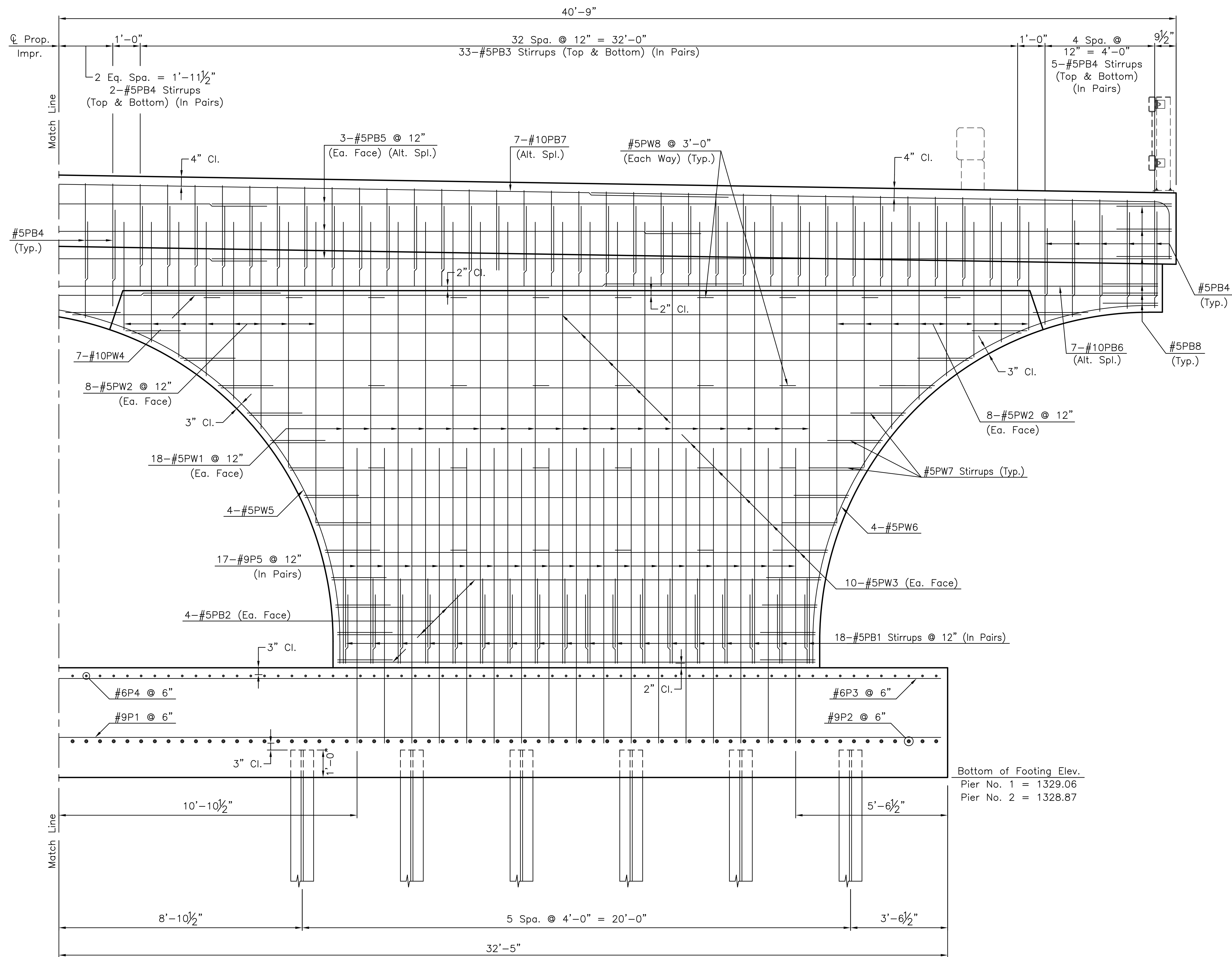
**135TH ST. WEST
BRIDGE PIER
REINFORCING
DETAIL 2**

SHEET TITLE
472-84017
PROJECT NUMBER

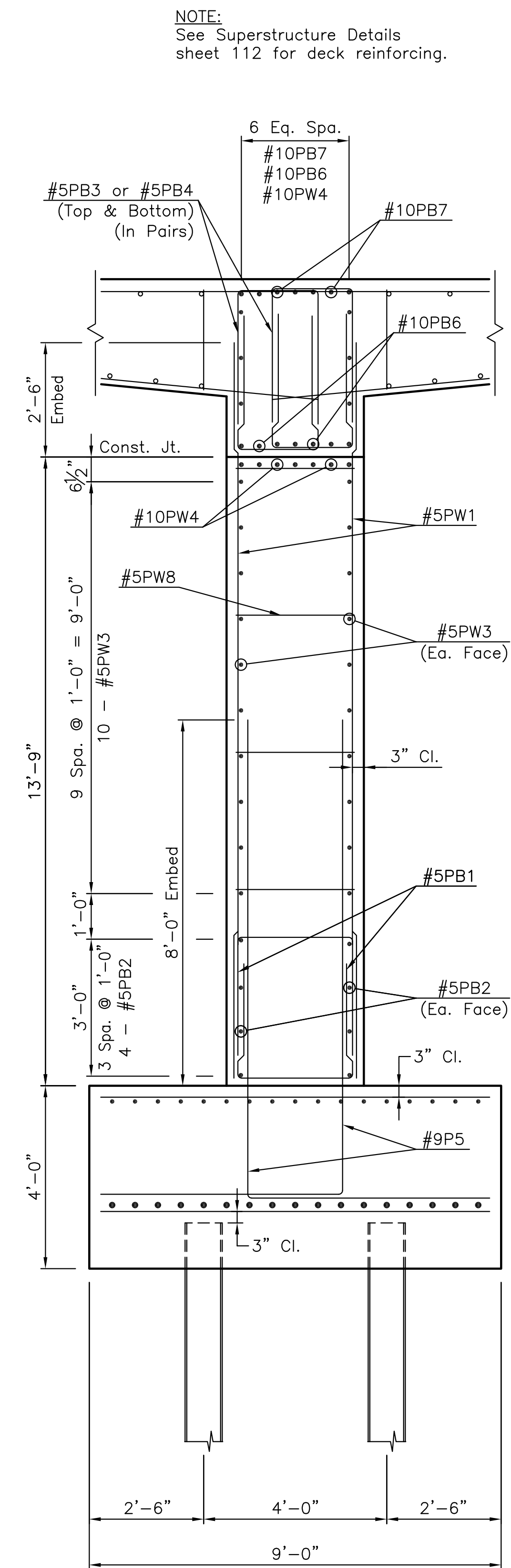
DESIGN BY: JAG
DRAWN BY: DMU
CHECKED BY: KJS

ISSUED
November 9, 2012
REVISED

SHEET NO.
110 of 220



HALF ELEVATION
(Looking Up Station)



TYPICAL SECTION

NOTE:
See Superstructure Details
sheet 112 for deck reinforcing.