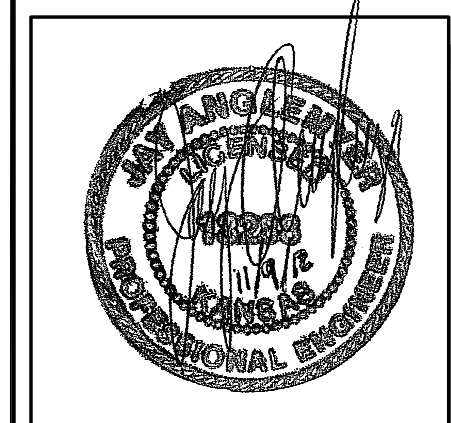


STATE	PROJECT NO.	YEAR	SHEET NO.	SHEETS
KANSAS	87 N-0351-01	2012	135	220

**MKEC**  
ENGINEERING  
CONSULTANTS, INC.  
411 N. WEBB ROAD  
WICHITA, K.S. 67206  
316-684-9600



**CENTRAL AVENUE  
IMPROVEMENTS FROM  
135TH ST. W. TO 119TH ST. W.**

**CENTRAL AVE & 135TH ST. W. TRAFFIC SIGNAL PLAN**  
SHEET TITLE  
472-84017  
PROJECT NUMBER

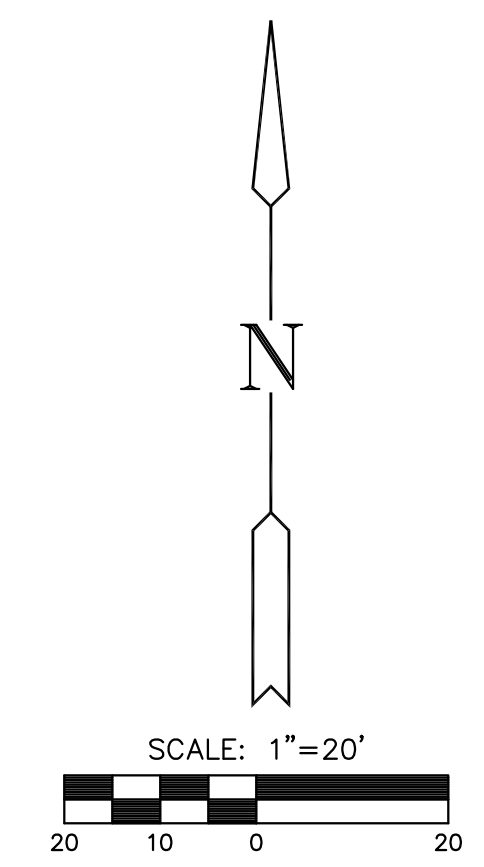
DESIGN BY: JRA  
DRAWN BY: WNJ  
CHECKED BY: JRA

ISSUED: November 9, 2012  
REVISED:

SHEET NO.  
**135 of 220**

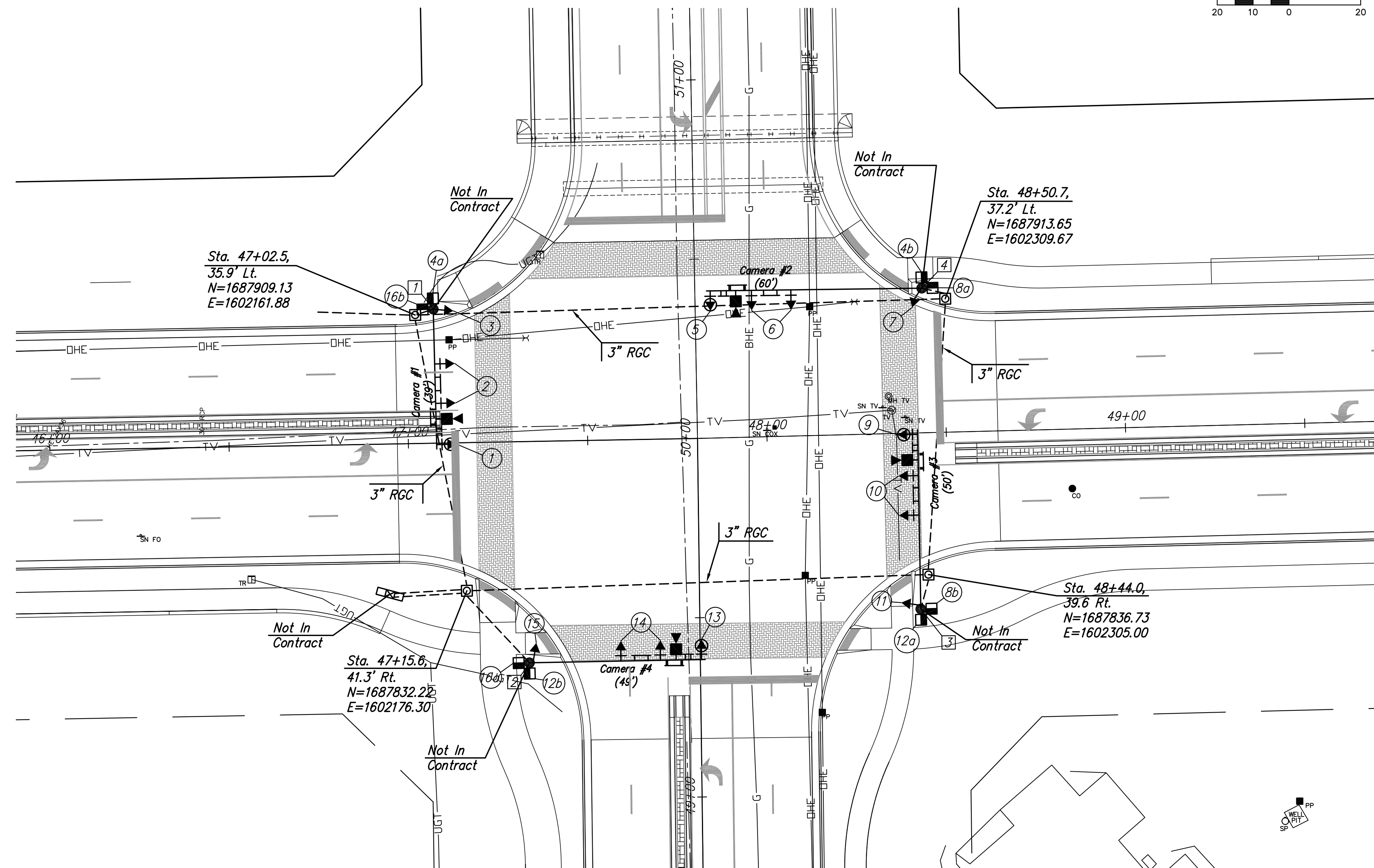
**GENERAL NOTES**

Conduit shall be installed before placing of new pavement.  
Placement of Service/Junction Boxes, Conduit Runs and Controller are typical and may be adjusted as directed by the Engineer to facilitate installation.  
Traffic Signal Poles, Mast Arms, etc. are shown for reference only. This project will only install the items identified in the Recapitulation of Quantities.



**LEGEND**

- Steel Traffic Signal Pole (Joint use)
- Steel Traffic Signal Pole (Std. Pole)
- Traffic Signal Indication (Type A) w/Backplate
- Traffic Signal Indication (Type I) w/Backplate
- ↘ Mast Arm Suspended Traffic Signal
- Video Detection Camera
- Service Box
- Pedestrian Indication
- Vehicle Detection Zone
- ① Detector Number
- Rigid Galvanized Conduit (RGC)
- TT Overhead Street Name Sign
- TT Overhead Sign R10-12 (Lt. Turn Yield on Green)
- TT Wind Damper
- PP Power Pole
- ⊗ Meter Box and Power Disconnect
- ⊠ Controller and Pad



RECAPITULATION OF TRAFFIC SIGNAL QUANTITIES		
BID ITEM	QUANTITY	UNIT
SERVICE BOX	4	E.A.
TRAFFIC SIGNAL CONDUIT, 3"	420	L.F.