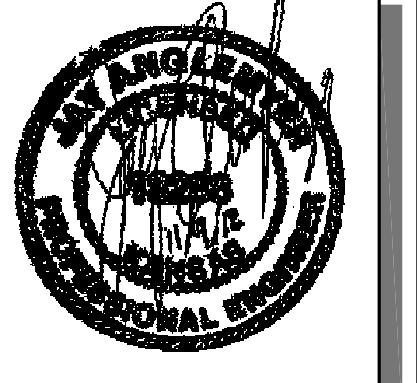


STATE	PROJECT NO.	YEAR	SHEET NO.	SHEETS
KANSAS	87 N-0351-01	2012	153	220

MKEC
ENGINEERING
CONSULTANTS, INC.

411 N. WEBB ROAD
WICHITA, K.S. 67206
316-684-9600



CENTRAL AVENUE IMPROVEMENTS FROM 135TH ST. W. TO 119TH ST. W.

TRAFFIC DETOUR PLAN PHASE 5

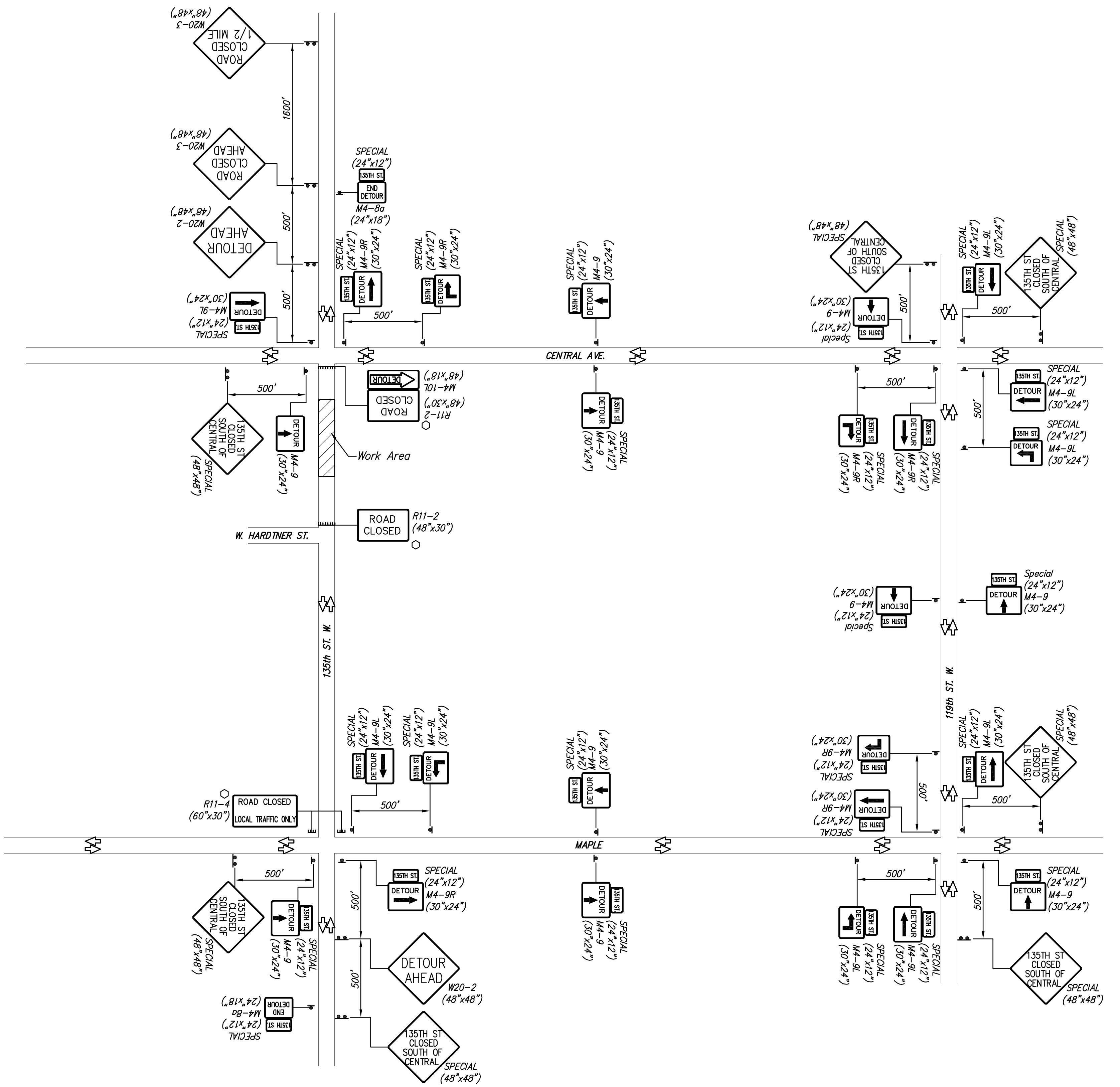
SHEET TITLE
472-84017
PROJECT NUMBER

DESIGN BY: JRA
DRAWN BY: WNU
CHECKED BY: JRA

ISSUED
November 9, 2012

REVISED

SHEET NO.
153 of 220



- LEGEND**
- Type III Barricades with lights
 - Mount On Type III Barricade
 - Type B Warning Light
 - Sign
 - Traffic Flow
 - Work Area
 - Shoofly Detour
 - Channelizer
 - Mount Overhead on Signal Cross-arm
 - Temporary Asphalt Widening