

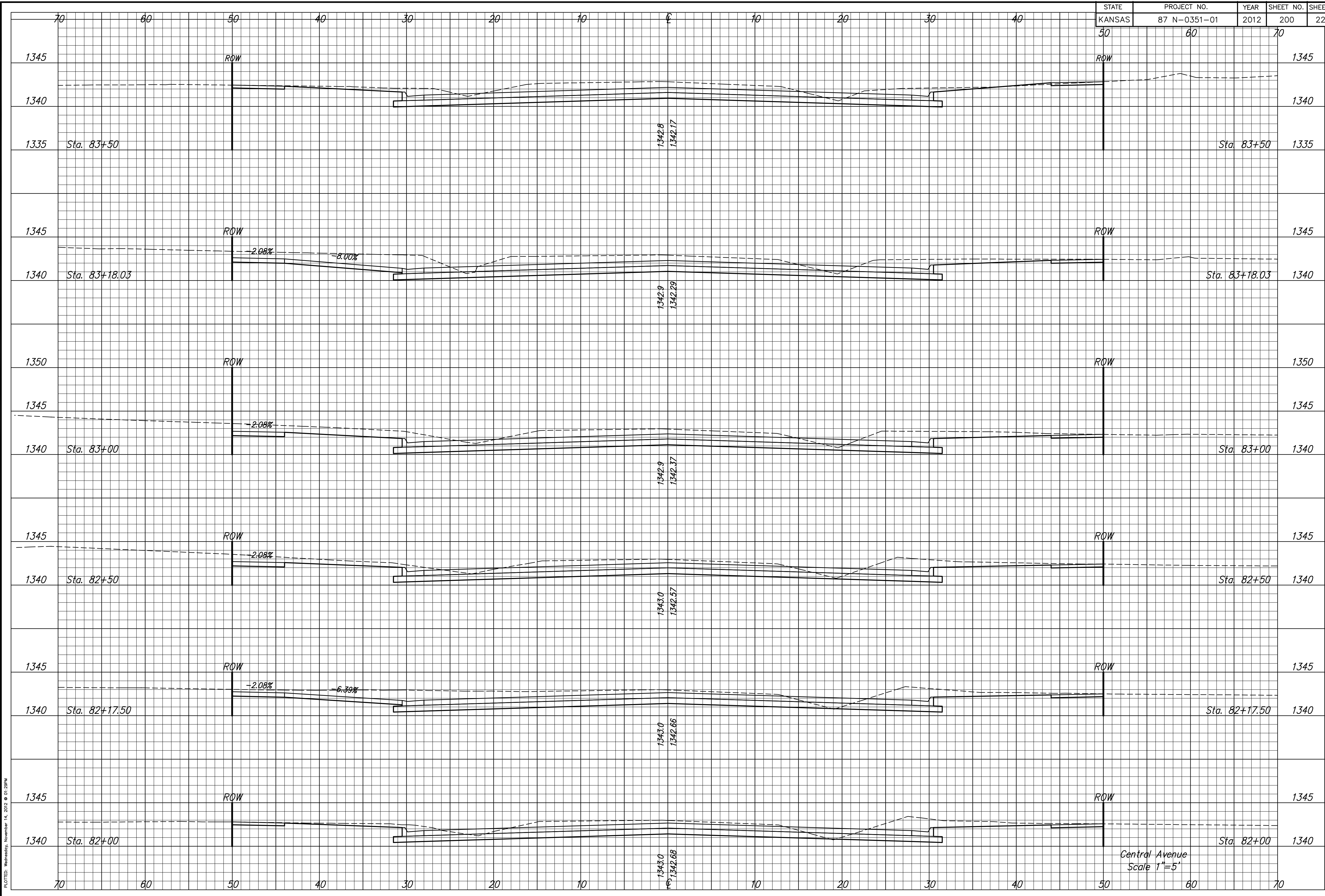
**CENTRAL AVENUE
IMPROVEMENTS FROM
135TH ST. W. TO 119TH ST. W.**

**CROSS SECTIONS
STA 82+00.00
TO
STA 83+50.00**
SHEET TITLE
472-84017
PROJECT NUMBER

DESIGN BY: JRA
DRAWN BY: WNJ
CHECKED BY: JRA

ISSUED: November 9, 2012
REVISED:

SHEET NO.
200 of 220



PLOTED: Wednesday, November 14, 2012 @ 01:28PM

J:\Civil\04238\Draw\Xsect\04238XS50.dwg