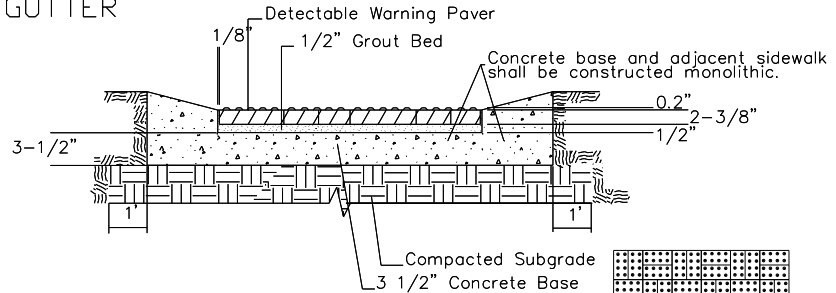
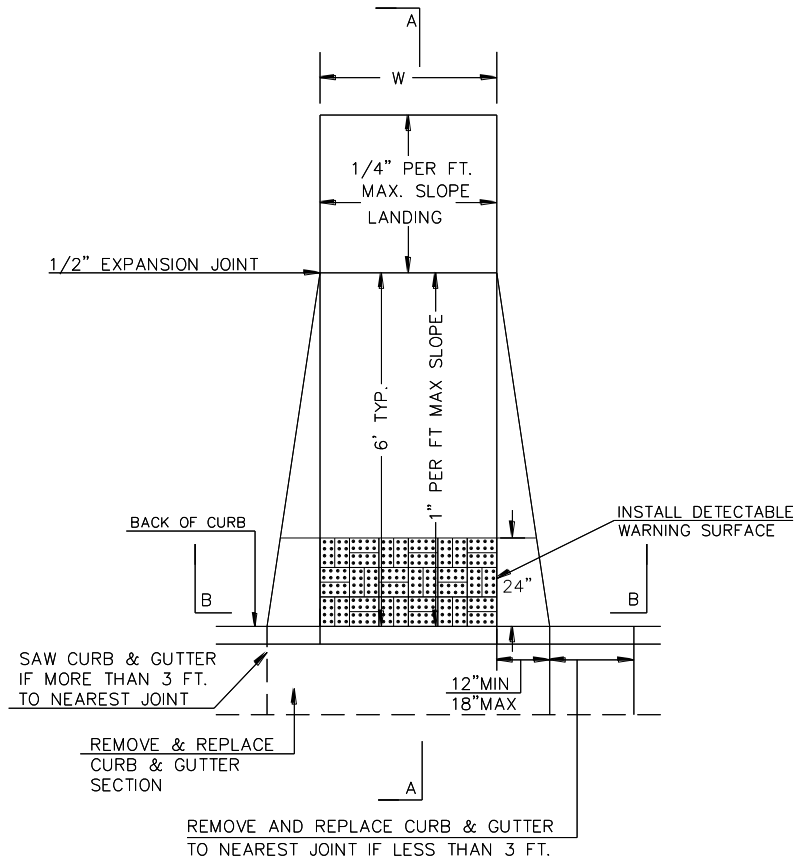


(TYPE A)
 STANDARD WHEELCHAIR RAMP
 WITH DETECTABLE WARNING
 CONSTRUCTION DETAIL FOR STREETS
 WITH COMBINED CURB & GUTTER

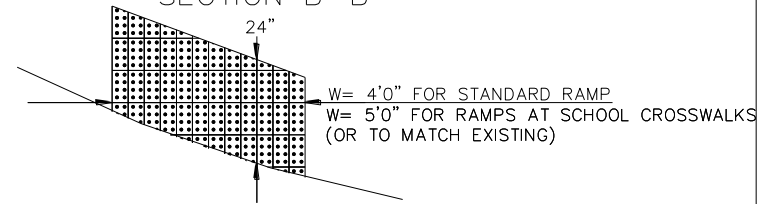
W= 4'0" FOR STANDARD RAMP
 W= 5'0" FOR RAMPS AT SCHOOL CROSSWALKS
 (OR TO MATCH EXISTING)



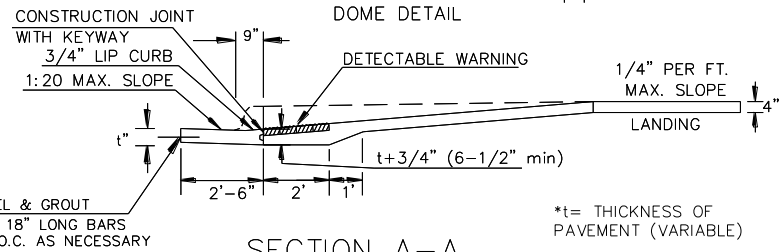
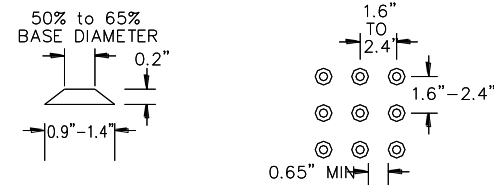
TYPICAL SECTION DETECTABLE WARNING PAVER

NOTE: RAMPS TO COMPLY WITH LATEST ADAAG GUIDELINES. PAVESTONE DETECTABLE WARNING PAVERS (OR AN APPROVED EQUAL) SHALL BE USED IN ALL WHEELCHAIR RAMPS. THE RED PAVER SHALL BE INSTALLED USING A BASKET WEAVE/PARQUET PATTERN. OTHER PATTERNS MAY BE USED WITH APPROVAL OF ENGINEER. SAND FILL JOINTS. ALIGN DOMES IN THE DIRECTION OF PEDESTRIAN TRAVEL.

SECTION B-B



NOTE: USE THIS BRICK PATTERN WHEN RAMP INTERSECTS A RADIUS. OTHER MINIMUM STANDARDS REMAIN THE SAME.



SECTION A-A