

# PAVING PLANS FOR REMINGTON PLACE ADDITION

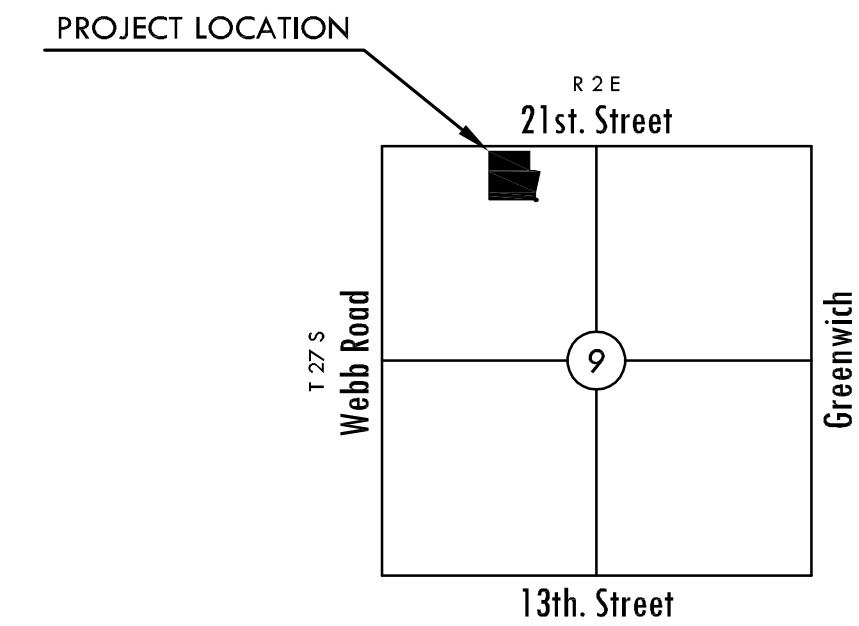
AN ADDITION TO THE CITY OF WICHITA  
SEDGWICK COUNTY, KANSAS

PROJECT NO. 472-85061

GARY L. JANZEN, P.E. - CITY ENGINEER

OCA 766285

ENTRANCES TO  
21ST STREET NORTH: LOT 1, BLOCK 1



VICINITY MAP  
No Scale

## GENERAL NOTES

- UNLESS SHOWN OR STATED OTHERWISE ON THESE DRAWINGS, MATERIALS AND CONSTRUCTION SHALL BE IN ACCORDANCE WITH CITY OF WICHITA CONCRETE PAVEMENT SPECIFICATIONS.
- CONTRACTOR WILL BE REQUIRED TO PROVIDE A MINIMUM ADVANCE NOTICE OF SEVENTY-TWO (72) HOURS TO UTILITY COMPANIES PRIOR TO STARTING ANY EXCAVATION AS FOLLOWS:  
KANSAS ONE-CALL 1-800-344-7233  
OR 887-2470 (LOCAL WICHITA)

THE CONTRACTOR MUST NOTIFY THE FOLLOWING IN CASE OF AN EMERGENCY:

SBC (TELEPHONE)	800-870-8390
COX COMMUNICATIONS (CABLE)	262-0661
WESTAR (ELECTRIC)	383-8600
KANSAS GAS SERVICE (GAS)	832-3101
CITY OF WICHITA WATER & SEWER MAINT.	262-6000
BLACK HILLS ENERGY (GAS)	800-303-0357

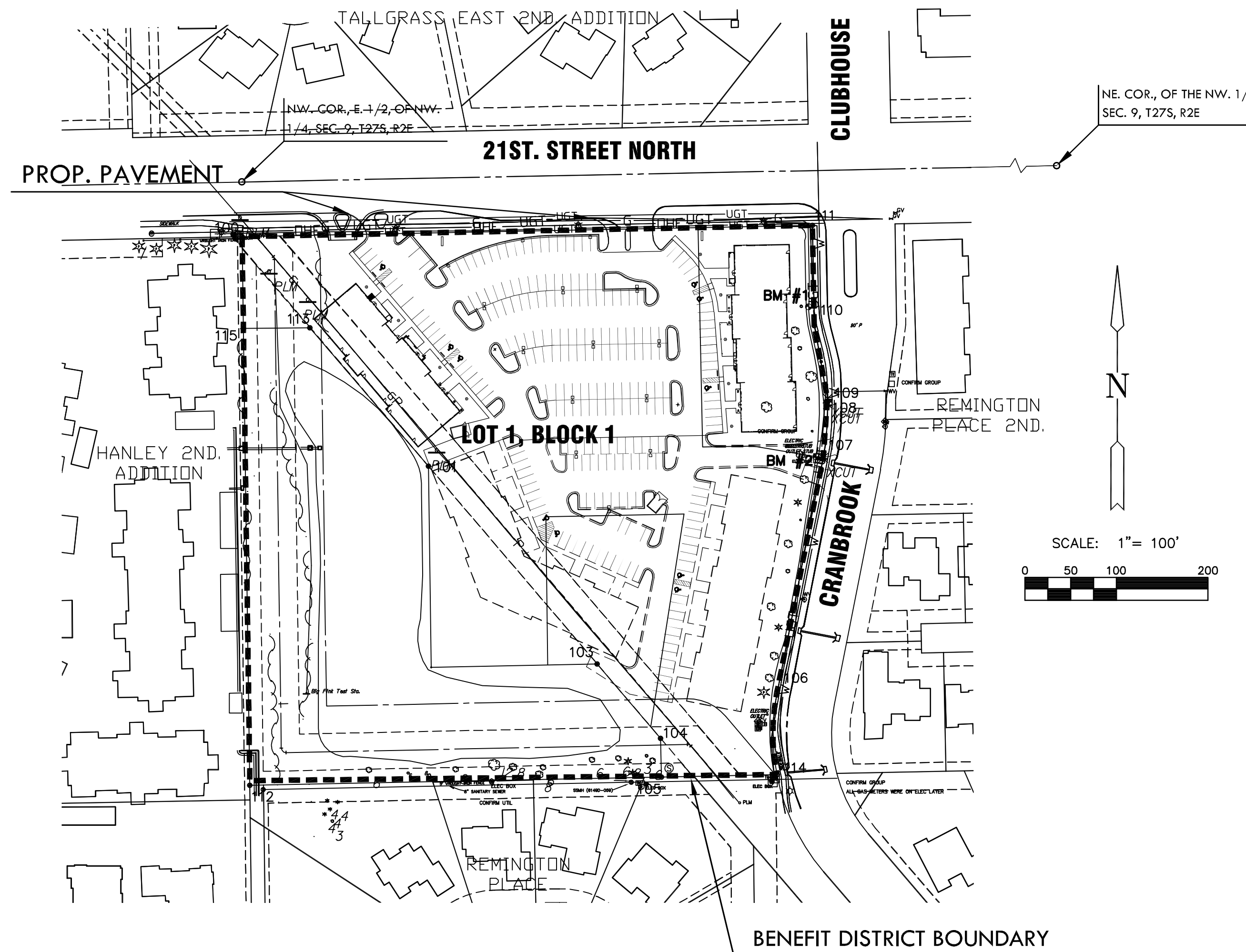
- THE CONTRACTOR SHALL BE RESPONSIBLE FOR PRESERVING PROPERTY IRONS. THE CONTRACTOR WILL BE REQUIRED TO RE-ESTABLISH ANY PROPERTY IRONS WHICH ARE DAMAGED OR DESTROYED BY HIS CONSTRUCTION OPERATIONS. SUCH IRONS SHALL BE RE-ESTABLISHED BY A LICENSED LAND SURVEYOR IN ACCORDANCE WITH STATE LAWS.
- EXISTING UTILITIES AND THEIR LOCATIONS, AS SHOWN ON THE PLANS REPRESENT THE BEST INFORMATION OBTAINABLE FOR DESIGN. LOCATION INFORMATION HAS BEEN OBTAINED FROM THE VARIOUS UTILITY COMPANIES AND IS EITHER FROM COMPANY RECORD DRAWINGS OR COMPANY PROVIDED FIELD LOCATIONS. THE PLAN LOCATIONS SHOWN ARE NOT GUARANTEED. ADDITIONAL EXISTING UTILITIES MAY ALSO BE ENCOUNTERED.

- RUBBLE FROM THE REMOVAL OF MISCELLANEOUS STRUCTURES AND EXCESS EXCAVATION WHICH IS TO BE WASTED SHALL BE DISPOSED OF ON SITES TO BE PROVIDED BY THE CONTRACTOR. THESE SITES SHALL BE APPROVED BY THE ENGINEER AS TO SUITABILITY, APPEARANCE AND SITE LOCATION. LOCATIONS THAT, IN THE OPINION OF THE ENGINEER, WILL LEAVE AN UNSIGHTLY APPEARANCE WILL NOT BE APPROVED. ALL DISPOSAL SITES MUST BE APPROVED BY THE KANSAS DEPARTMENT OF HEALTH AND FLOOD PLAIN WOULD REQUIRE A KANSAS STATE BOARD OF AGRICULTURE PERMIT. ANY MATERIAL DUMPED IN WATERS OF THE UNITED STATES OR WETLANDS IS SUBJECT TO U.S. CORPS OF ENGINEERS PERMITTING REGULATIONS. ANY MATERIAL BURIED OR STOCKPILED BEYOND APPROVED CONSTRUCTION LIMITS WOULD REQUIRE ADDITIONAL ARCHAEOLOGICAL INVESTIGATIONS UNLESS BURIED IN A PREVIOUSLY APPROVED BORROW LOCATION.

- A SAW CUT OF AT LEAST ONE-HALF THE DEPTH OF THE EXISTING SURFACE COURSES OR ONE-FOURTH THE DEPTH OF THE EXISTING TOTAL PAVEMENT THICKNESS SHALL BE PROVIDED AT LOCATIONS WHERE PROPOSED CONSTRUCTION ABUTS AN EXISTING SURFACE OR PAVEMENT FOR WHICH PARTIAL REMOVAL OF THAT SURFACE OR PAVEMENT IS REQUIRED. SAW JOINT TO FACILITATE REMOVAL WITHIN THREE (3) FEET OF EXISTING JOINTS WILL NOT BE PERMITTED AND FOR SUCH INSTANCES THE LIMITS OF REMOVAL SHALL EXTEND TO THE EXISTING JOINT. SUCH SAW CUTS WILL NOT BE PAID FOR DIRECTLY AND THIS COST SHALL BE CONSIDERED AS SUBSIDIARY TO THE REMOVAL OF SURFACE OR PAVEMENT.

- CONTRACTOR SHALL RESEED AND MULCH ALL DISTURBED AREAS. COST SHALL BE CONSIDERED SUBSIDIARY TO SITE RESTORATION.

- DEVELOPER FOR THIS PROJECT IS:  
21 WEBB LLC  
8111 E. 32ND. ST. N. SUITE 101  
WICHITA, KS 67226  
CONTACT - GARY OBORNY  
(316)262-3331



## INDEX TO DRAWINGS

SHEET NO.	DESCRIPTION
1	TITLE SHEET
2-3	PAVING DETAILS
4	DEMOLITION PLAN
5	PAVING PLAN
6-10	BMP SHEETS
11	FINAL PLAT

## BENCHMARKS

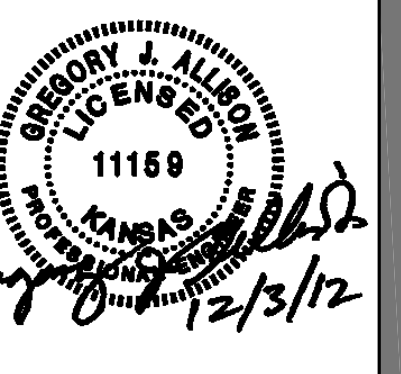
- BM#1 CHISELED "X" ON SIDEWALK AT PC OF CURVE, 255 FEET SOUTH OF THE NORTHEAST CORNER OF LOT 1, BLOCK 1 REMINGTON PLACE. ELEV.=1398.34 NAVD 88
- BM#2 CHISELED "V" ON SIDEWALK AT PC OF CURVE, 85' NORTH OF THE SOUTHEAST CORNER OF LOT 1, BLOCK 1, REMINGTON PLACE. ELEV.=1399.96 NAVD 88

## CONTROL POINTS

PT. NO.	NORTHING	EASTING	DESCRIPTION
100	1699664.34	1682249.19	5/8" REBAR W/ MKEC CAP
101	1699413.31	1682452.87	1/2" REBAR W/R&B CAP
102	1699193.32	1682455.74	1/2" REBAR W/R&B CAP
103	1699197.11	1682637.16	1/2" REBAR W/R&B CAP
104	1699115.69	1682706.51	1/2" REBAR W/R&B CAP
105	1699073.39	1682707.38	1/2" REBAR W/R&B CAP
106	1699165.22	1682833.71	VCUT
107	1699422.31	1682884.22	XCUT
108	1699480.93	1682889.29	XCUT
109	1699487.21	1682889.12	XCUT
110	1699566.93	1682874.50	3/4" PIPE
111	1699676.67	1682872.59	3/4" PIPE
112	1699064.20	1682257.67	MAGNAIL
113	1699564.85	1682323.19	1/2" REBAR W/R&B CAP
114	1699075.97	1682833.62	1/2" REBAR W/R&B CAP
115	1699564.06	1682250.61	1/2" REBAR W/R&B CAP

**MKEC**  
ENGINEERING  
CONSULTANTS, INC.

411 N. WEBB ROAD  
WICHITA, K.S. 67206  
316-684-9600



PAVING PLANS FOR  
**REMINGTON PLACE ADDITION**  
PROJECT NO. 472-85061

## TITLE SHEET

SHEET TITLE  
**472-85061**  
PROJECT NUMBER

SPE | SPE | BLB  
DESIGNED | DRAWN | CHECKED

ISSUED  
**November 2012**

REVISED

SHEET NO.  
**1 of 11**