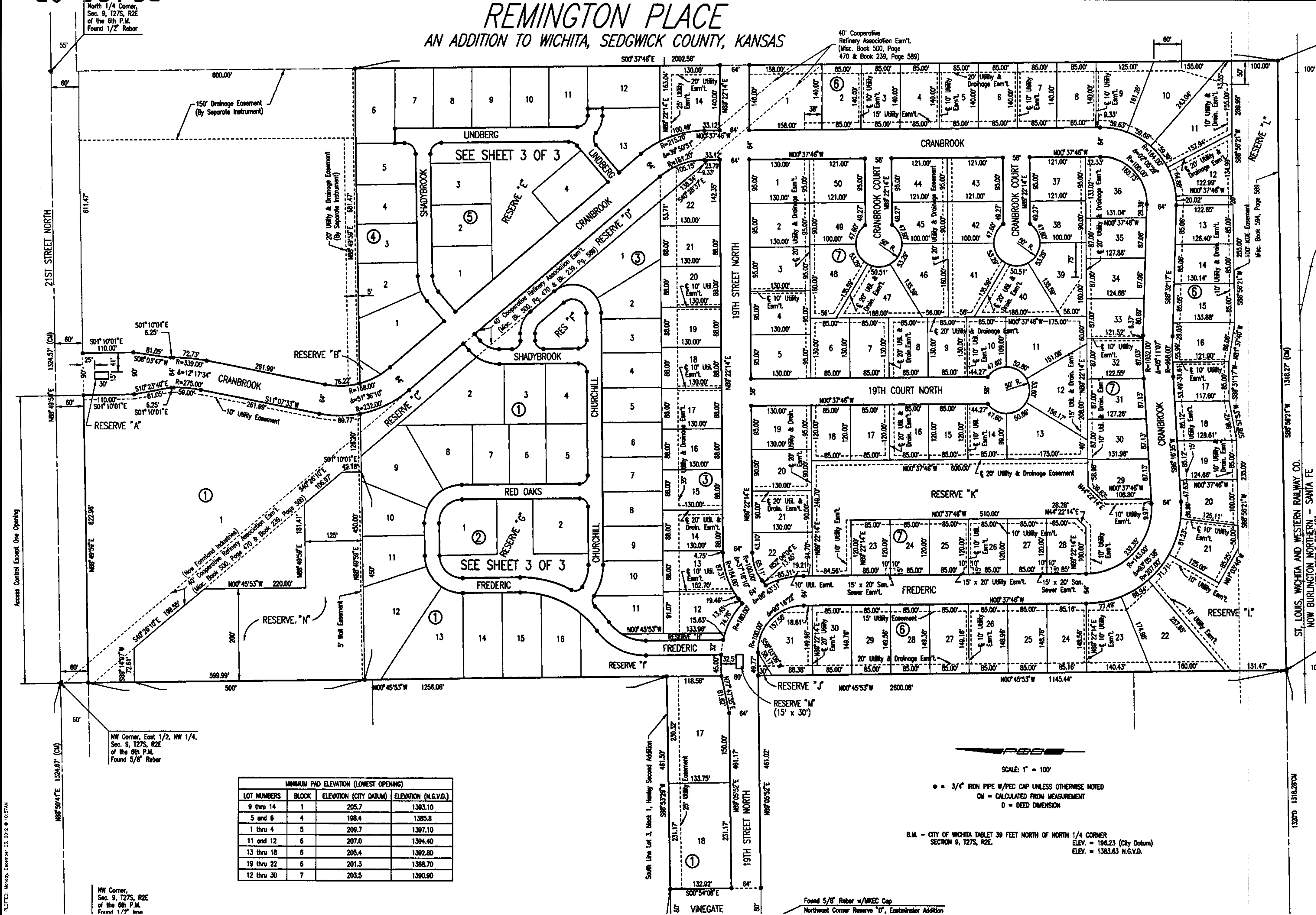


REMINGTON PLACE

AN ADDITION TO WICHITA, SEDGWICK COUNTY, KANSAS

Center Sec. 9,
T27S, R2E
of the 6th P.M.
Found 1/2" Iron Pipe



North 1/4 Corner,
Sec. 9, T27S, R2E
of the 6th P.M.
Found 1/2" Rebar

NW Corner, East 1/2, NW 1/4,
Sec. 9, T27S, R2E
of the 6th P.M.
Found 5/8" Rebar

NW Corner,
Sec. 9, T27S, R2E
of the 6th P.M.
Found 1/2" Iron

MINIMUM PAD ELEVATION (LOWEST OPENING)			
LOT NUMBERS	BLOCK	ELEVATION (CITY DATUM)	ELEVATION (M.G.V.D.)
9 thru 14	1	205.7	1383.10
5 and 6	4	198.4	1385.8
1 thru 4	5	208.7	1397.10
11 and 12	6	207.0	1394.40
13 thru 18	6	205.4	1392.80
19 thru 22	6	201.3	1388.70
12 thru 30	7	203.5	1390.90

SCALE: 1" = 100'

- = 3/4" IRON PIPE W/PEC CAP UNLESS OTHERWISE NOTED
- CM = CALCULATED FROM MEASUREMENT
- D = DEED DIMENSION

B.M. - CITY OF WICHITA TABLE 30 FEET NORTH OF NORTH 1/4 CORNER
SECTION 9, T27S, R2E. ELEV. = 196.23 (City Datum)
ELEV. = 1383.63 M.G.V.D.

PAVING PLANS FOR
REMINGTON PLACE ADDITION
PROJECT NO. 472-85061

FINAL PLAT
SHEET TITLE
472-85061
PROJECT NUMBER

MKEC | MKEC | MKEC
DESIGNED | DRAWN | CHECKED

ISSUED
November 2012
REVISED

SHEET NO.
11 of 11