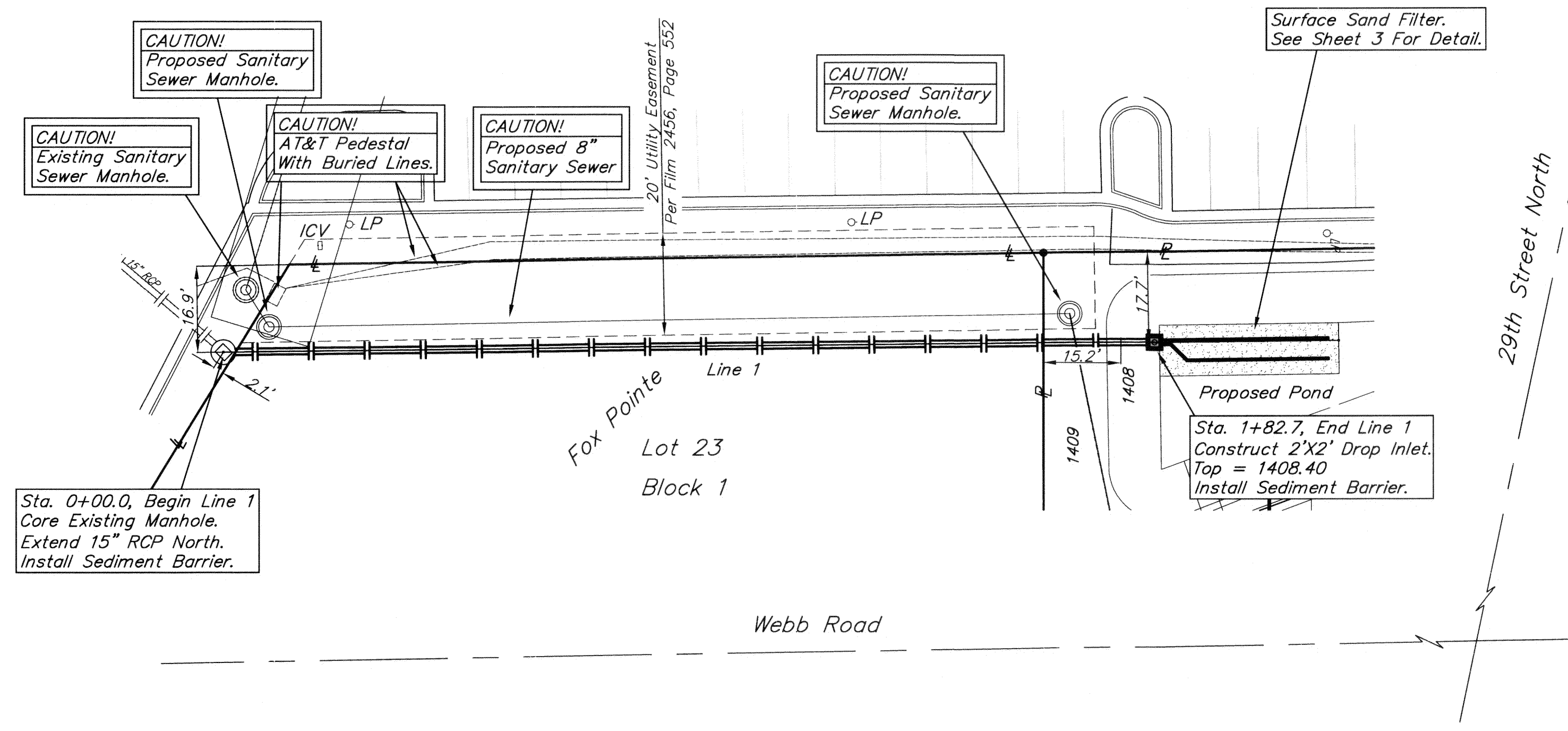
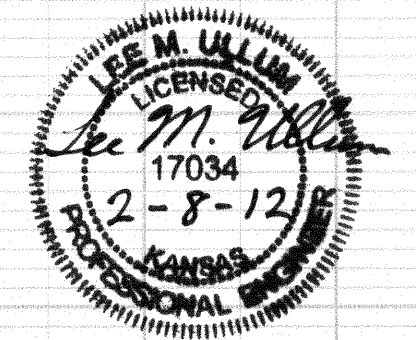
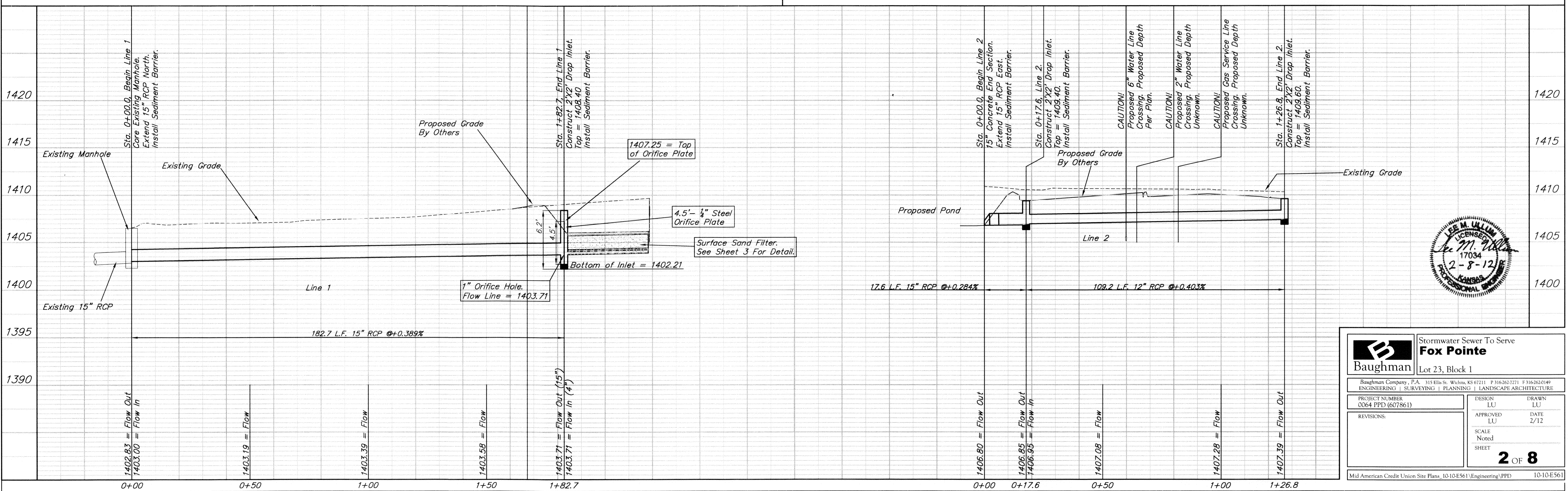
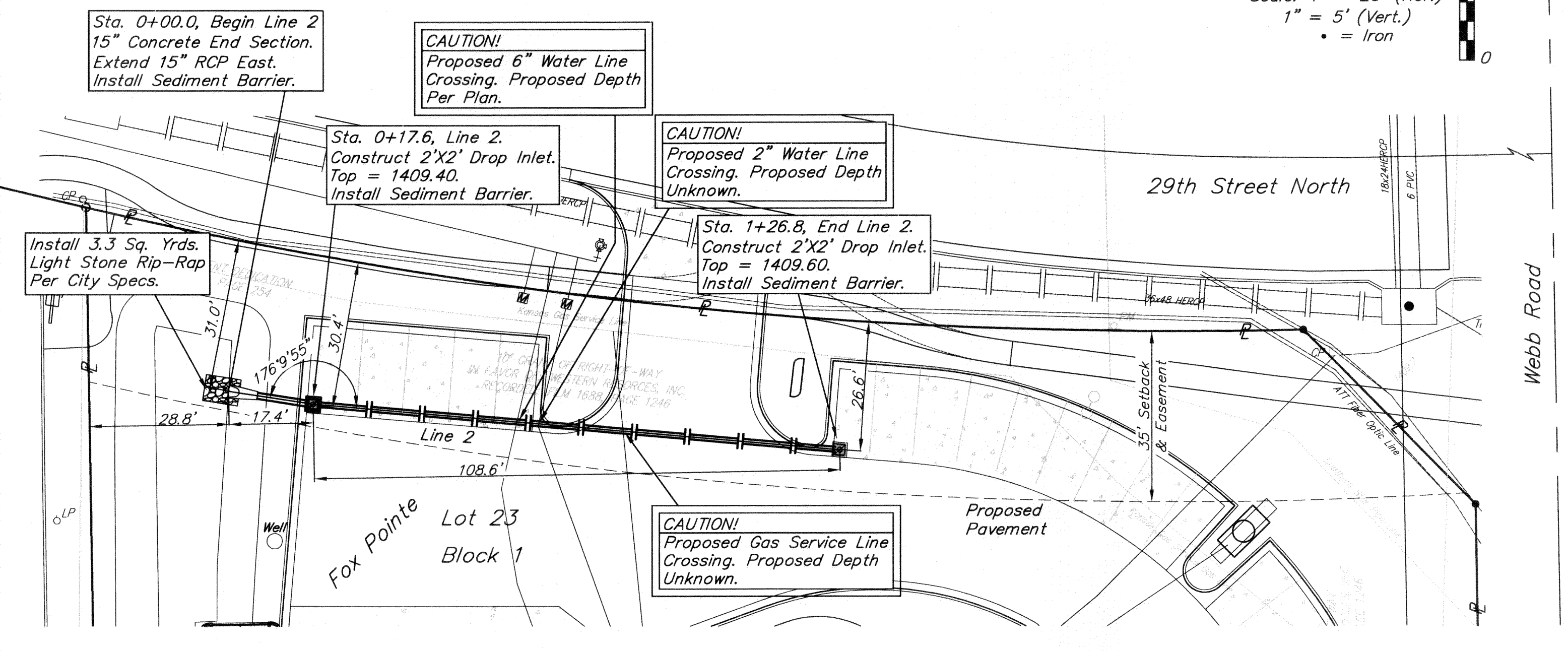
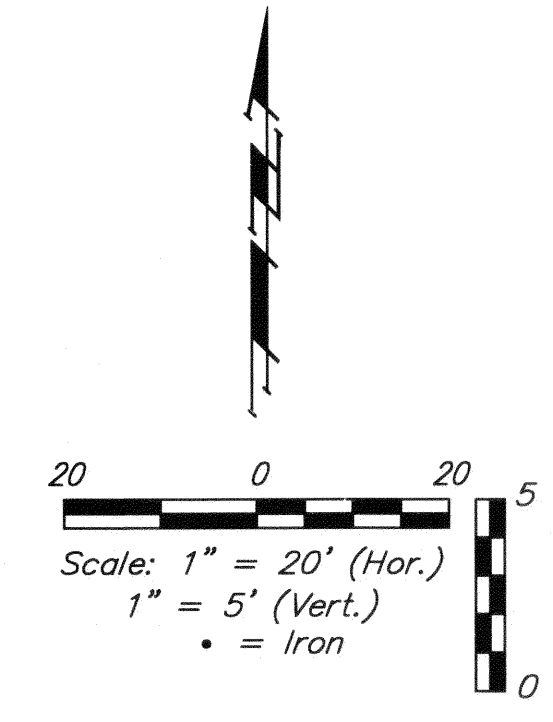


SITE BENCHMARK  
 "a" Chiseled on Top  
 of Catch Basin  
 Elevation=1409.49  
 (NAVD 88)



Contractor Shall Follow All Applicable  
 Best Management Practices (BMP)  
 For Erosion Control.

Contractor To Use Extreme Caution  
 When Excavating Near Utility Lines.  
 Contractor To Hand Dig To Expose All  
 Utility Lines Prior To Construction.  
 Verify Depth To Determine Conflict If Any.



<b>Baughman</b>		Stormwater Sewer To Serve <b>Fox Point</b> Lot 23, Block 1	
Baughman Company, P.A. 315 Ellis St. Wichita, KS 67211 P 316-262-7271 F 316-262-0149 ENGINEERING   SURVEYING   PLANNING   LANDSCAPE ARCHITECTURE			
PROJECT NUMBER 0064-PPD (607861)	DESIGN LU	DRAWN LU	
REVISIONS:	APPROVED LU	DATE 2/12	
	SCALE Noted	SHEET	<b>2 OF 8</b>
Mid American Credit Union Site Plans_10-10-E561.Engineering.PPD		10-10-E561	