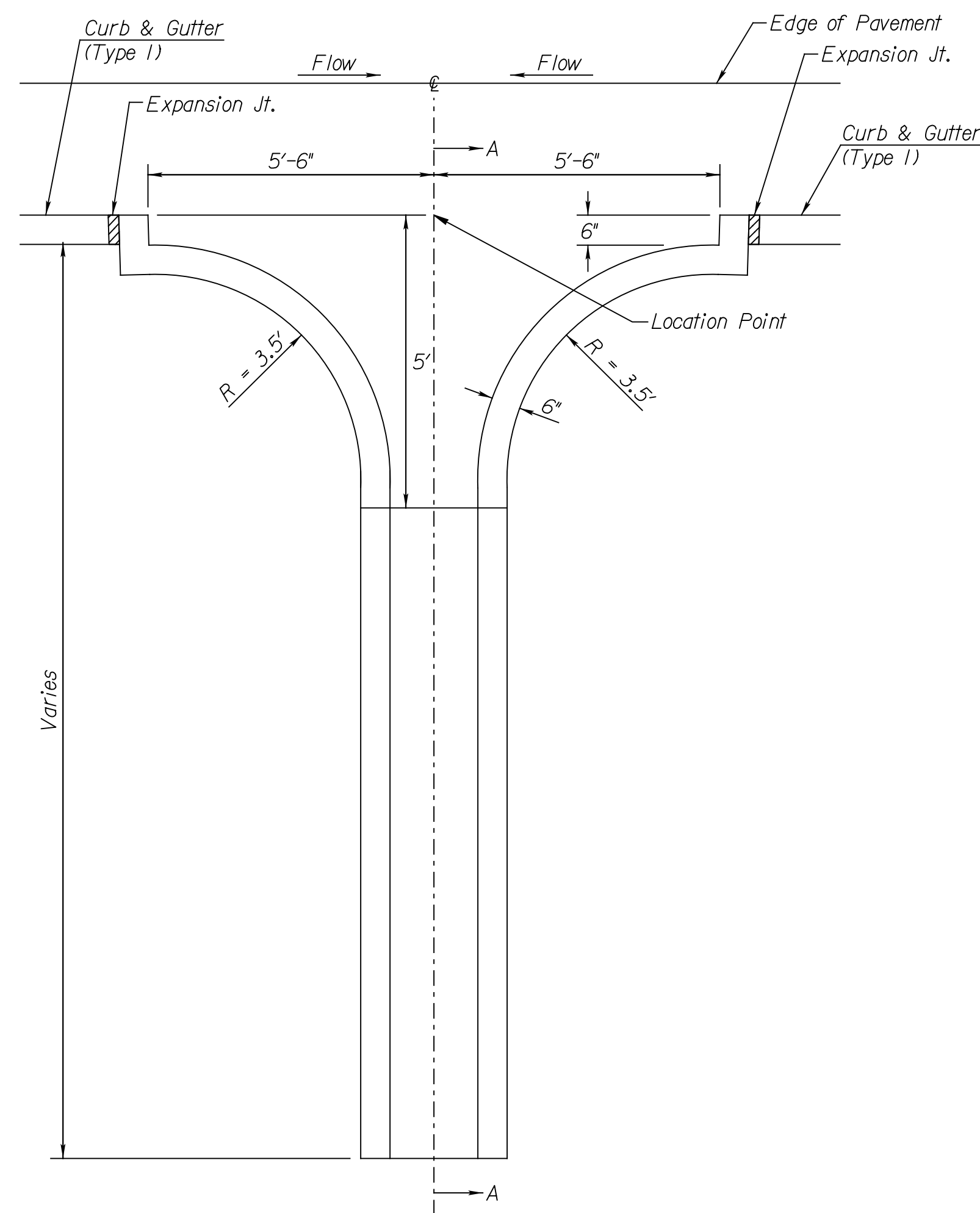
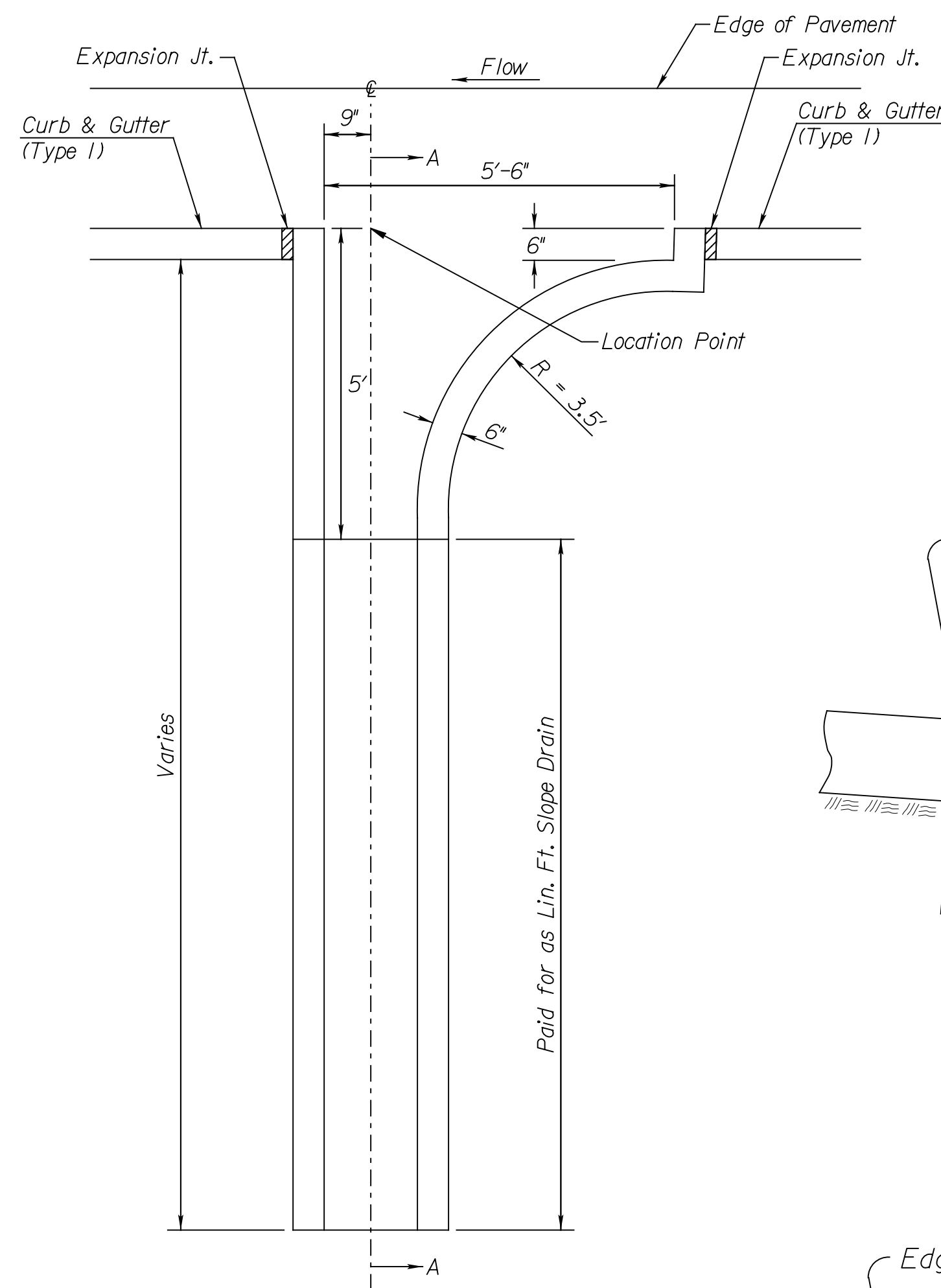


PROJECT NO.	YEAR	SHEET NO.	TOTAL SHEETS
472-84817 PHASE II	2011	37	93



PLAN - SAG

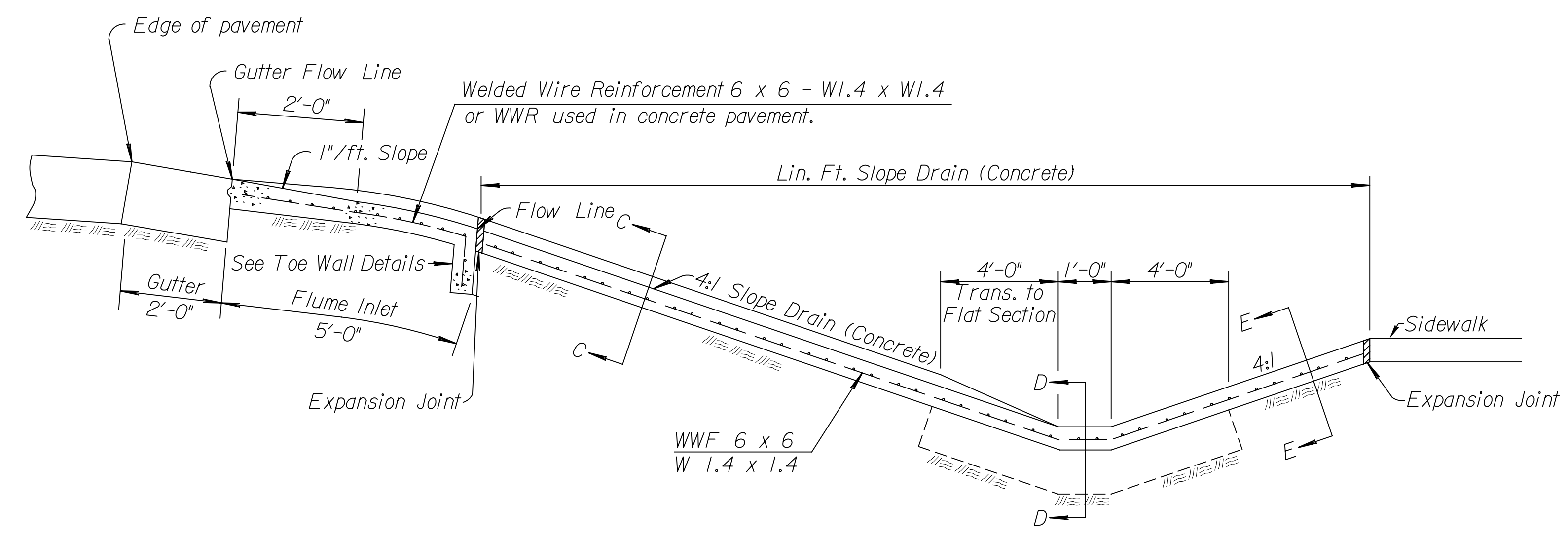


PLAN - ON GRADE

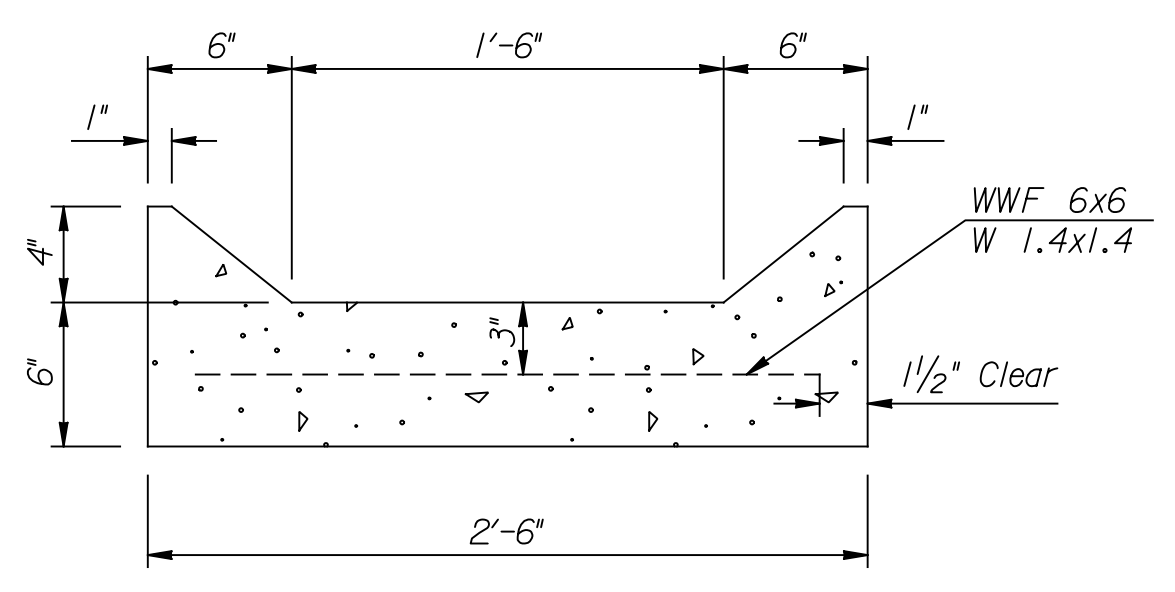
**GENERAL NOTES**

Flume Inlets shall be paid for by unit price per each. Slope Drains (Stone or Concrete) shall be paid for by unit price per linear foot.  
 Reinforcing steel & welded wire reinforcement, and additional excavation for Slope drain are Subsidiary to Flume Inlet and Slope Drain.  
 The entire area of the Flume Inlet & Slope Drain shall be placed monolithic and struck off with a uniform thickness of 6 inches.  
 Concrete Grade 3.0 (AE) shall be used in Flume Inlet and Slope Drain. On concrete pavement projects, the contractor may substitute the mix used in concrete pavement.  
 Transverse expansion and contraction Joints of same type in pavement are to extend through the flume inlet, omitting load transfer devices. The edge curb section will be made continuous through any expansion joint by using a filler material approved by the Engineer to fill the void to the full height of the curb. Joints will not extend into the Slope Drain.

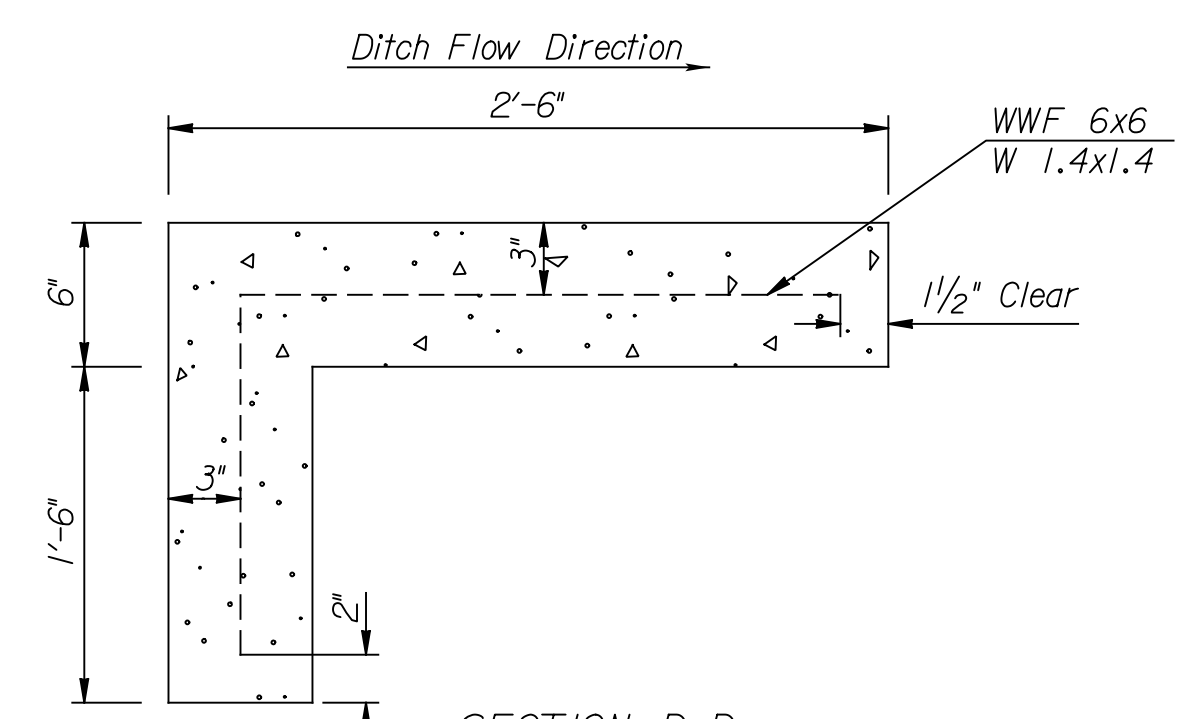
All exposed edges shall be finished with an edging tool.  
 Curb & Gutter will be paid for through Flume Inlet opening as linear feet of Curb & Gutter.  
 Aggregate for the Slope Drain (STONE) shall meet the requirements of stone for KDOT Specified Aggregate Ditch Lining and have a  $D_{50}$  of 4" unless otherwise noted on the plans. The Contractor shall place stone from ditch backslope to the top of slope to produce a well graded mass without segregation of material sizes. Placement, measurement, and payment shall conform to KDOT Standard Specifications.  
 Slope Drain (STONE) shall be underlain with geotextile fabric that meets the KDOT Standard Specification. All work and materials for the geotextile fabric shall be Subsidiary to the Slope Drain (STONE).



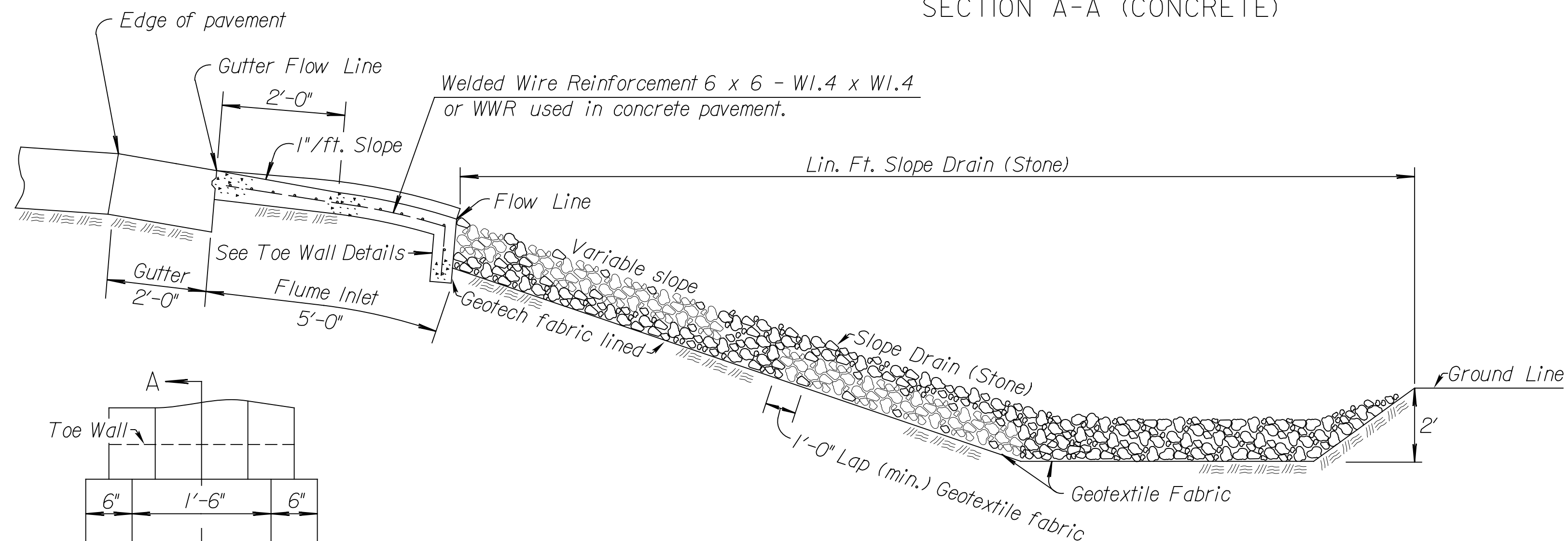
SECTION A-A (CONCRETE)



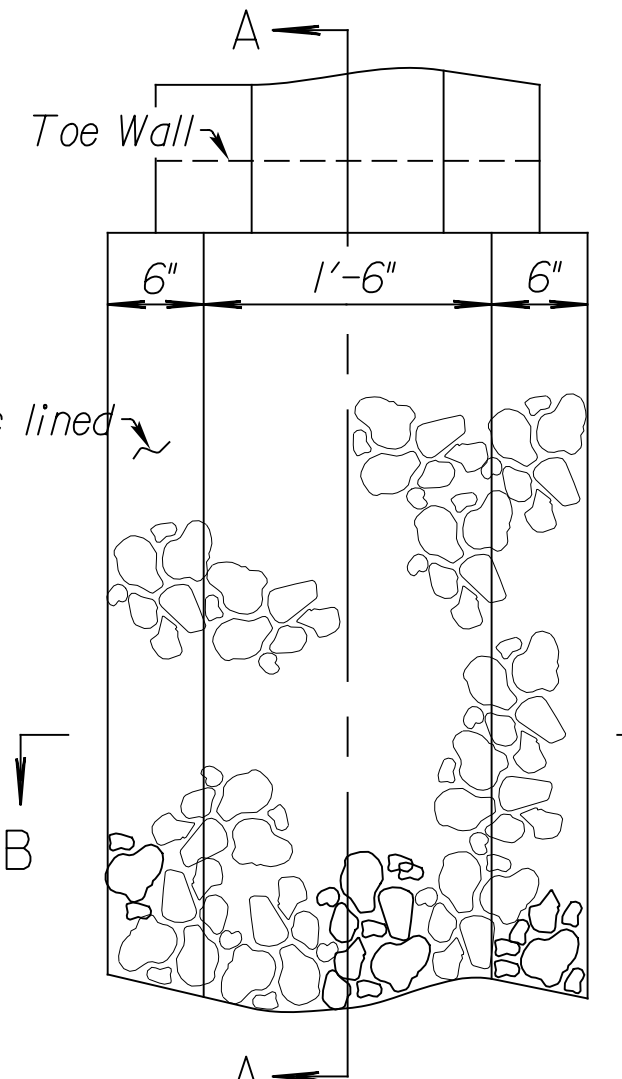
SECTION C-C  
FLUME INLET/SLOPE DRAIN CONCRETE



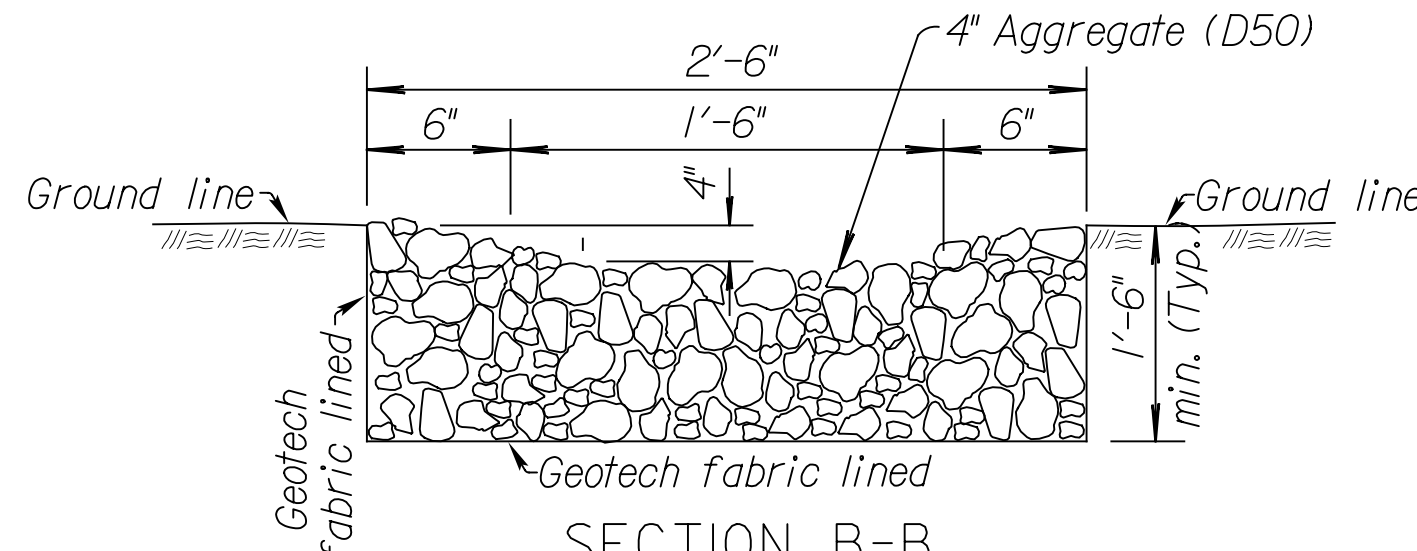
SECTION D-D  
SLOPE DRAIN CONCRETE



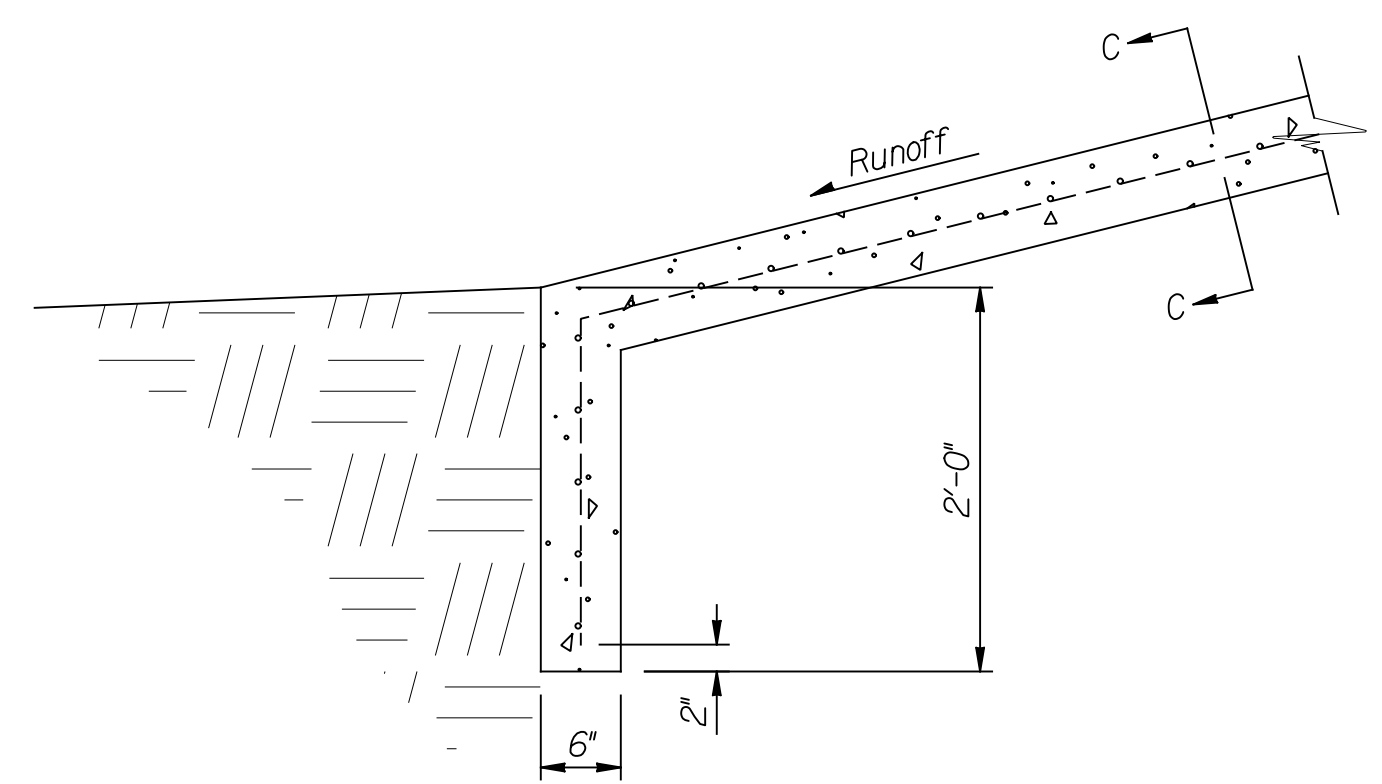
SECTION A-A (STONE)



SECTION B-B  
SLOPE DRAIN STONE



SECTION B-B  
SLOPE DRAIN STONE



TOEWALL DETAIL

Slope Drain is shown with (STONE) or (CONCRETE) option, type to be determined by the Designer.

Plotted on: Monday, October 24, 2011 09:34 AM  
 mbechtel  
 Plot Queue: \\ovp\00\PL\TBWLP  
 Plot Scale: 1:000000.000000 Pen Table: \\ovp\00\Jobs\4809\Hoover\CD\Detail\Hvr\_cconc-flume-det.dgn  
 Design Filename: \\ovp\00\Jobs\4809\Hoover\CD\Detail\Hvr\_cconc-flume-det.dgn



FLUME INLET & SLOPE DRAIN (CONCRETE/STONE)		
CITY ENGINEER JAMES L. ARMOUR, P.E., L.S.		
PROJECT NUMBER 472-84817 PHASE II	OCA NUMBER 770005	DATE 11/2011
CITY ENGINEER'S OFFICE CITY HALL - SEVENTH FLOOR 455 NORTH MAIN STREET WICHITA, KANSAS 67202-1620 (316) 268-4501		DESIGN DRAWN SHEET 37 of 93