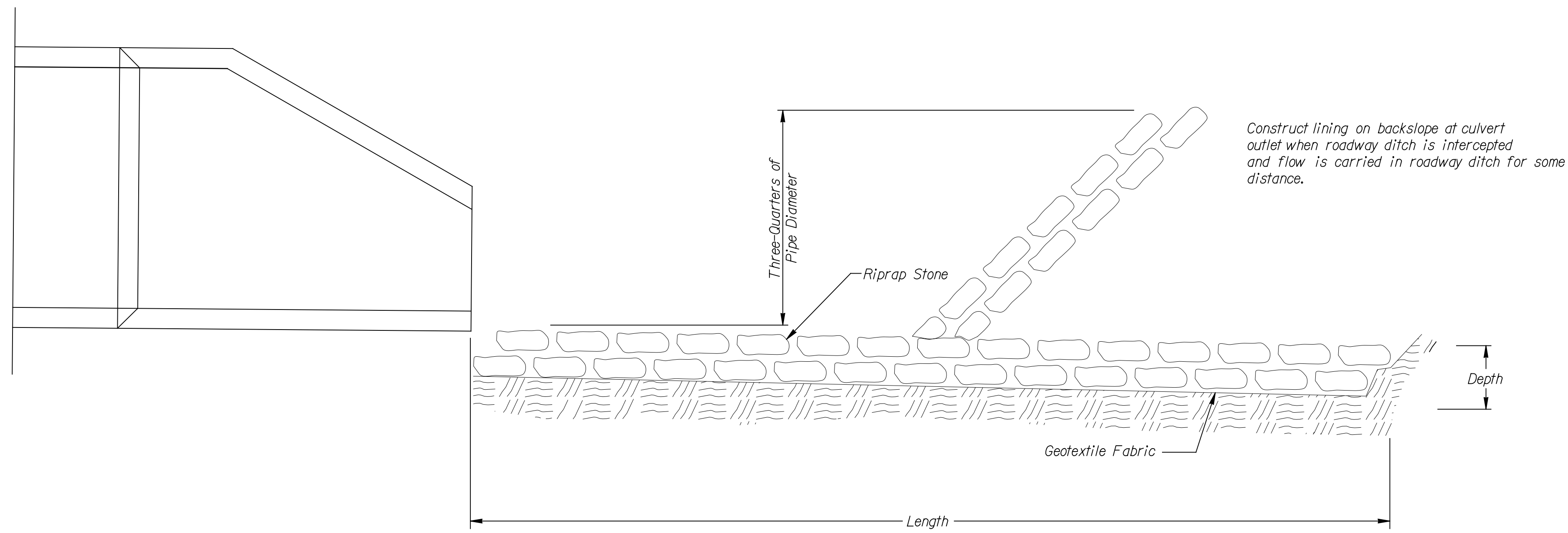
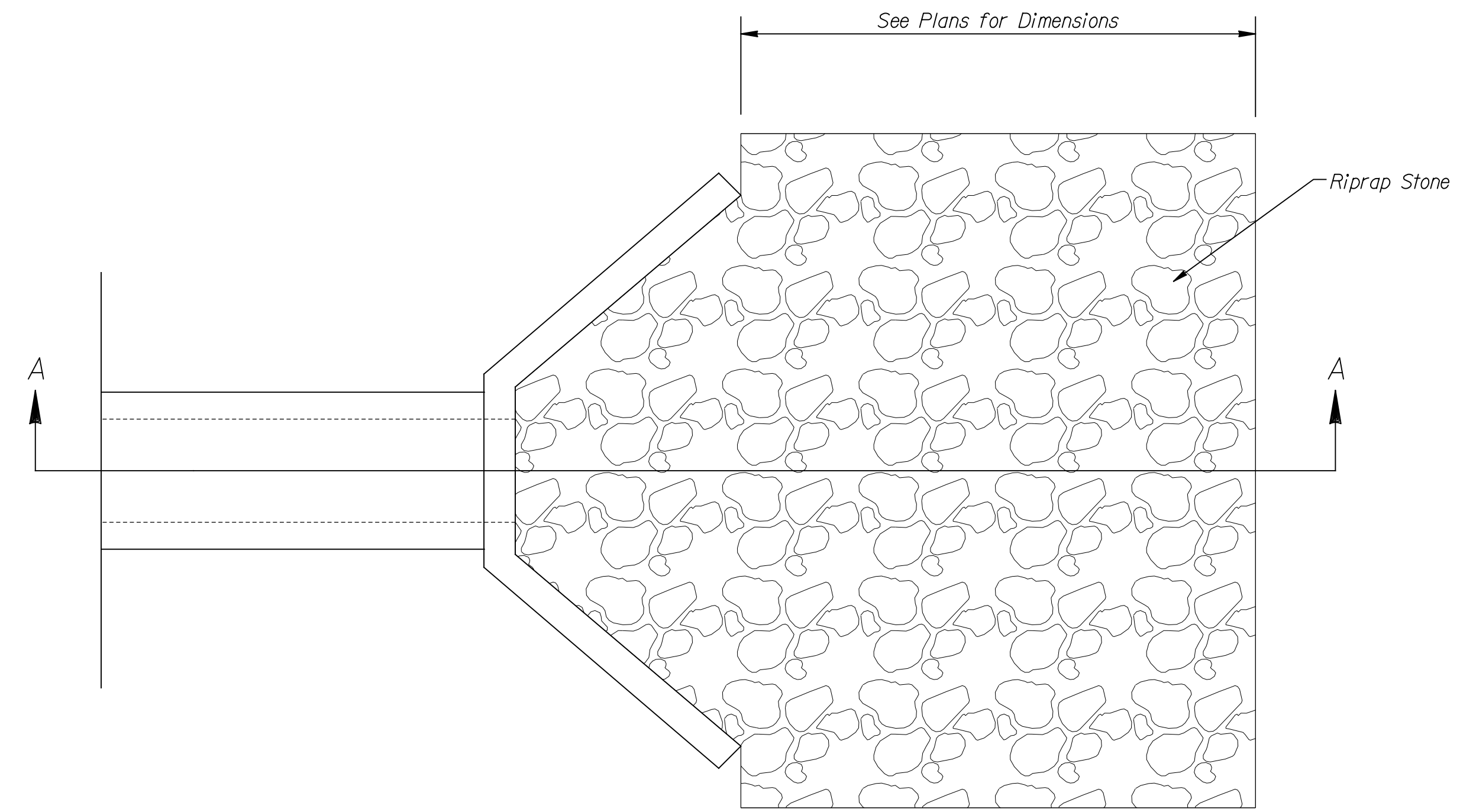


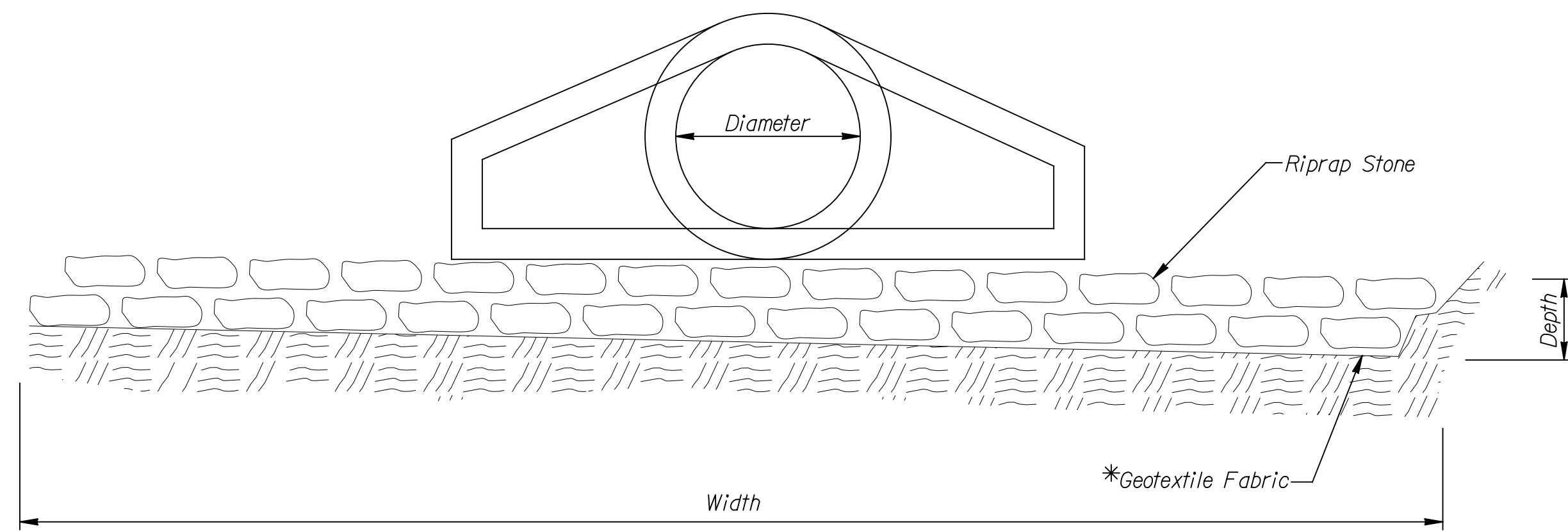
PROJECT NO.	YEAR	SHEET NO.	TOTAL SHEETS
472-84817 PHASE II	2011	38	93



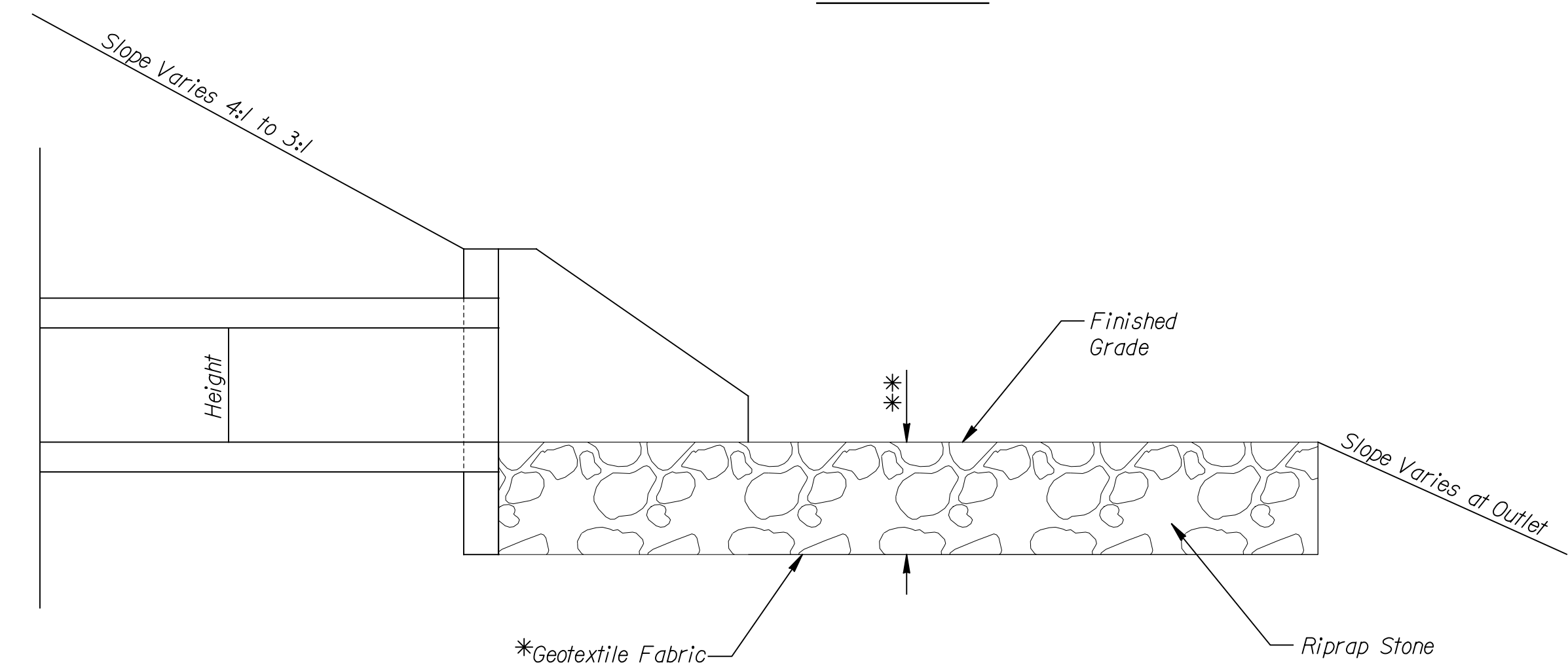
SLOPE PROTECTION FOR
CULVERT OUTLET - SIDE VIEW



PLAN VIEW



SLOPE PROTECTION FOR
CULVERT OUTLET - END VIEW



SECTION A-A

CULVERT SLOPE PROTECTION (RIPRAP)

*Geotextile Fabric is required for all Riprap installations that are not shown in the plans w/ a granular bedding, and is Subsidiary to "Rip-rap Stone, Slope Protection."

Plotted on: Monday, October 24, 2011 09:14 AM
 Plot Queue: \\ovp\00\PL\TBWLP
 Plot Scale: 1:000000.000000 Pen Tables: \\ovp\00\Jobs\4809\Common\Highway\Library\lob\pen\CC-2x3x36.pen
 Design Filename: \\ovp\00\Jobs\4809\Hoover\CD\Detail\Hvr_r\ripap-det.dgn



SLOPE PROTECTION DETAILS		
CITY ENGINEER JAMES L. ARMOUR, P.E., L.S.		
PROJECT NUMBER 472-84817 PHASE II	OCA NUMBER 770005	DATE 11/2011
CITY ENGINEER'S OFFICE CITY HALL - SEVENTH FLOOR 455 NORTH MAIN STREET WICHITA, KANSAS 67202-1620 (316) 268-4501		DESIGN DRAWN SHEET 38 of 93