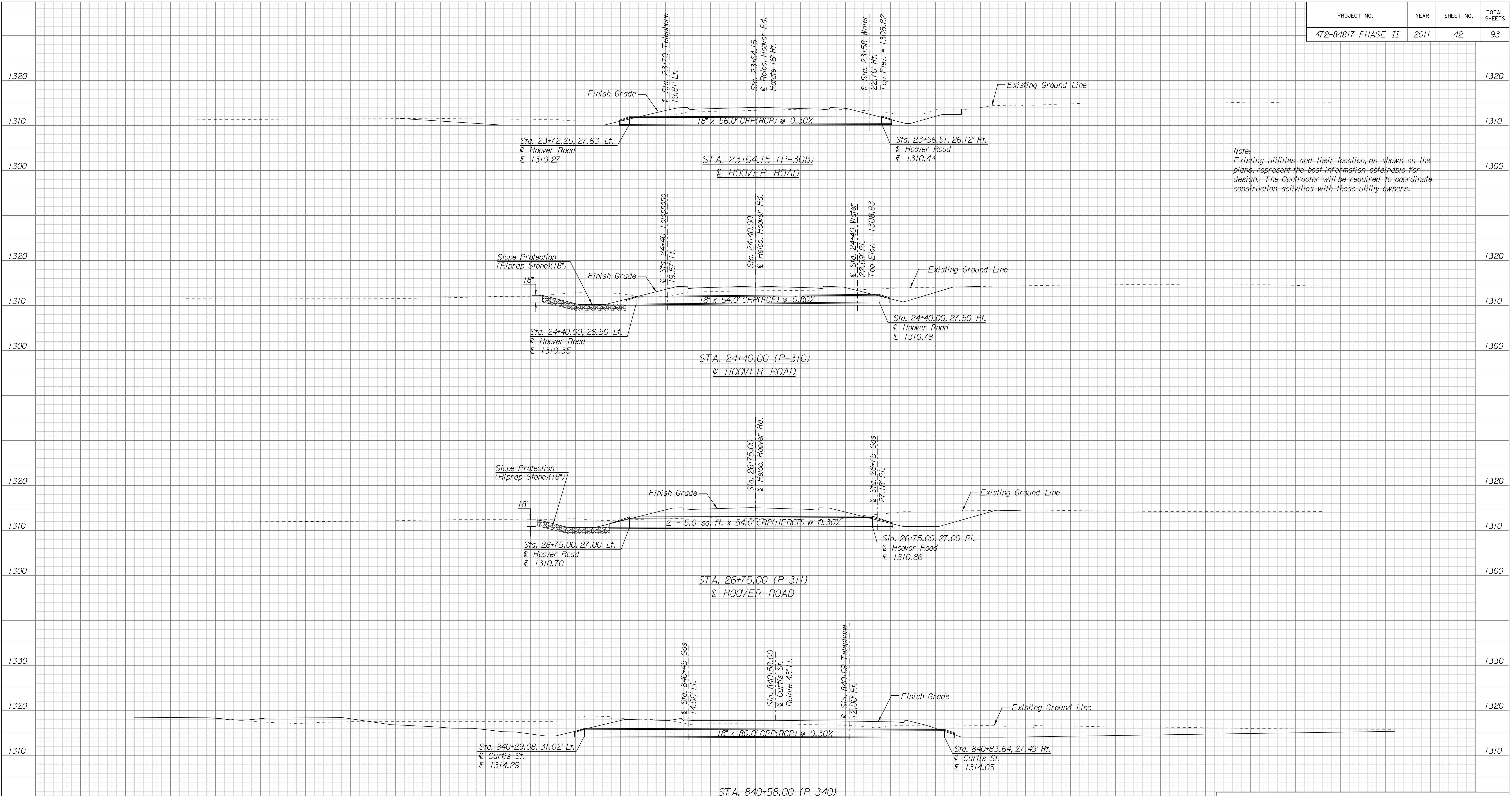


PROJECT NO.	YEAR	SHEET NO.	TOTAL SHEETS
472-84817 PHASE II	2011	42	93



Note:  
Existing utilities and their location, as shown on the plans, represent the best information obtainable for design. The Contractor will be required to coordinate construction activities with these utility owners.

Plotted on: Monday October 24, 2011 09:35 AM  
 mbechtel  
 Plot Queue: \\ovp00\ovp\TBWLP  
 Plot Scale: 10.000000:0.000000 Pen Table: \\ovp00\ovp\Jobs\4809\Common\Highway\Library\lob\pen\CC-23x36.pen  
 Design Filename: \\ovp00\ovp\Jobs\4809\Hoover\CD\Drainage\Culvert\Hvr-culvert1.protdgn



 <b>CITY OF WICHITA</b> PUBLIC WORKS & UTILITIES ENGINEERING DIVISION	<b>HOOVER RD. &amp; CURTIS ST.</b> (P-308, P-310, P-311, P-340) CULVERT PROFILES		
	CITY ENGINEER <b>JAMES L. ARMOUR, P.E., L.S.</b>		
	PROJECT NUMBER 472-84817 PHASE II	OCA NUMBER 770005	DATE 11/2011
	CITY ENGINEER'S OFFICE CITY HALL - SEVENTH FLOOR 455 NORTH MAIN STREET WICHITA, KANSAS 67202-1620 (316) 268-4501		DESIGN DRAWN SHEET <b>42 of 93</b>