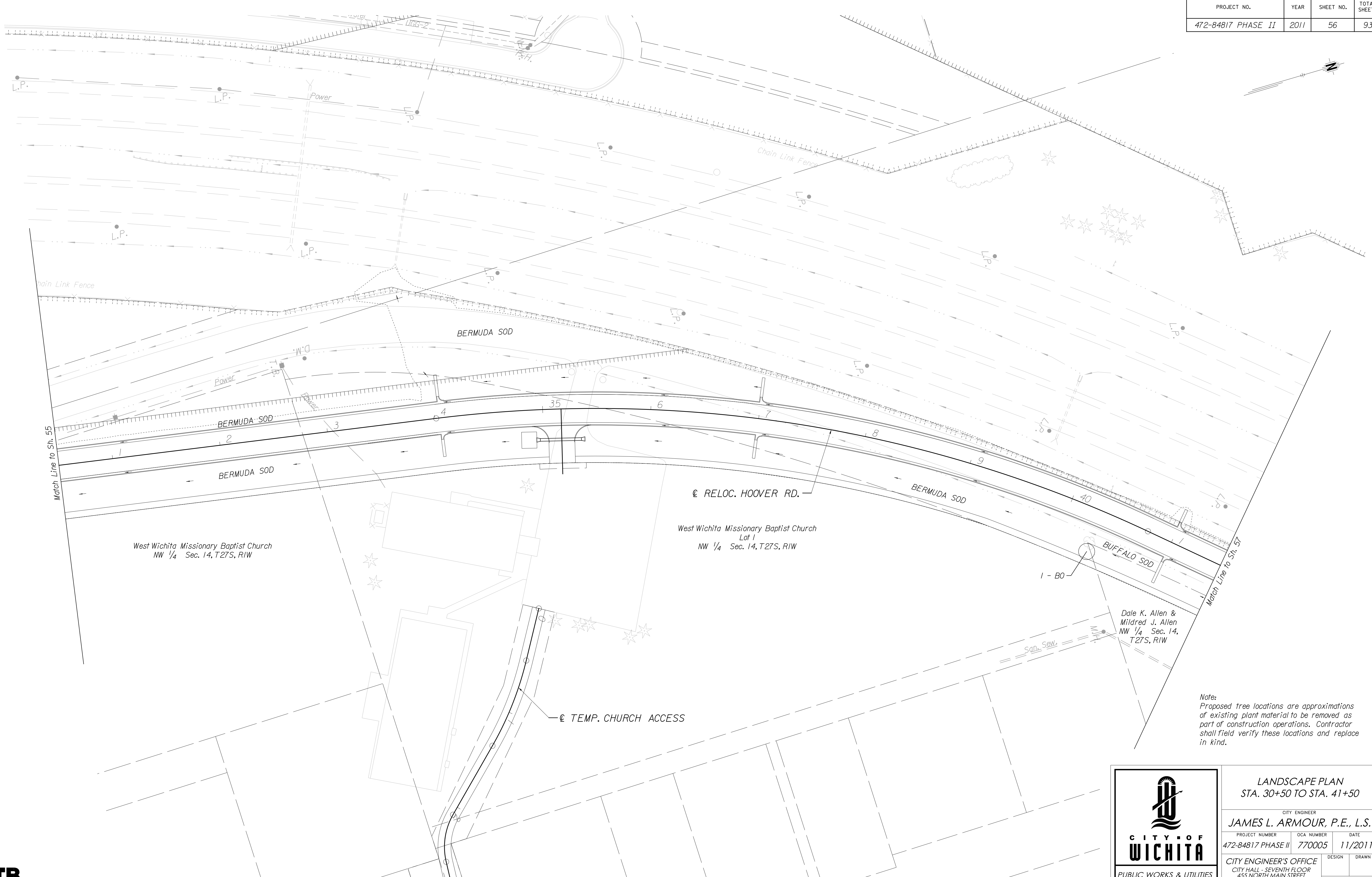


PROJECT NO.	YEAR	SHEET NO.	TOTAL SHEETS
472-84817 PHASE II	2011	56	93



West Wichita Missionary Baptist Church  
NW 1/4 Sec. 14, T27S, R1W

West Wichita Missionary Baptist Church  
Lot 1  
NW 1/4 Sec. 14, T27S, R1W

Dale K. Allen &  
Mildred J. Allen  
NW 1/4 Sec. 14,  
T27S, R1W

Note:  
Proposed tree locations are approximations  
of existing plant material to be removed as  
part of construction operations. Contractor  
shall field verify these locations and replace  
in kind.

Plotted on: Monday March 19, 2012 11:43 AM  
mbechtel  
Plot Queue: \\ovp\w00\PL\TBWLP  
Plot Scale: 40,000:000:000000 Pen Tables: \\ovp\w00\Jobs\4809\Hoover\CD\Plan\Hr\landscape-plan.dgn  
Design Filename: \\ovp\w00\Jobs\4809\Hoover\CD\Plan\Hr\landscape-plan.dgn



LANDSCAPE PLAN STA. 30+50 TO STA. 41+50		
CITY ENGINEER <b>JAMES L. ARMOUR, P.E., L.S.</b>		
PROJECT NUMBER 472-84817 PHASE II	OCA NUMBER 770005	DATE 11/2011
CITY ENGINEER'S OFFICE CITY HALL - SEVENTH FLOOR 455 NORTH MAIN STREET WICHITA, KANSAS 67202-1620 (316) 268-4501		DESIGN DRAWN SHEET <b>56 of 93</b>