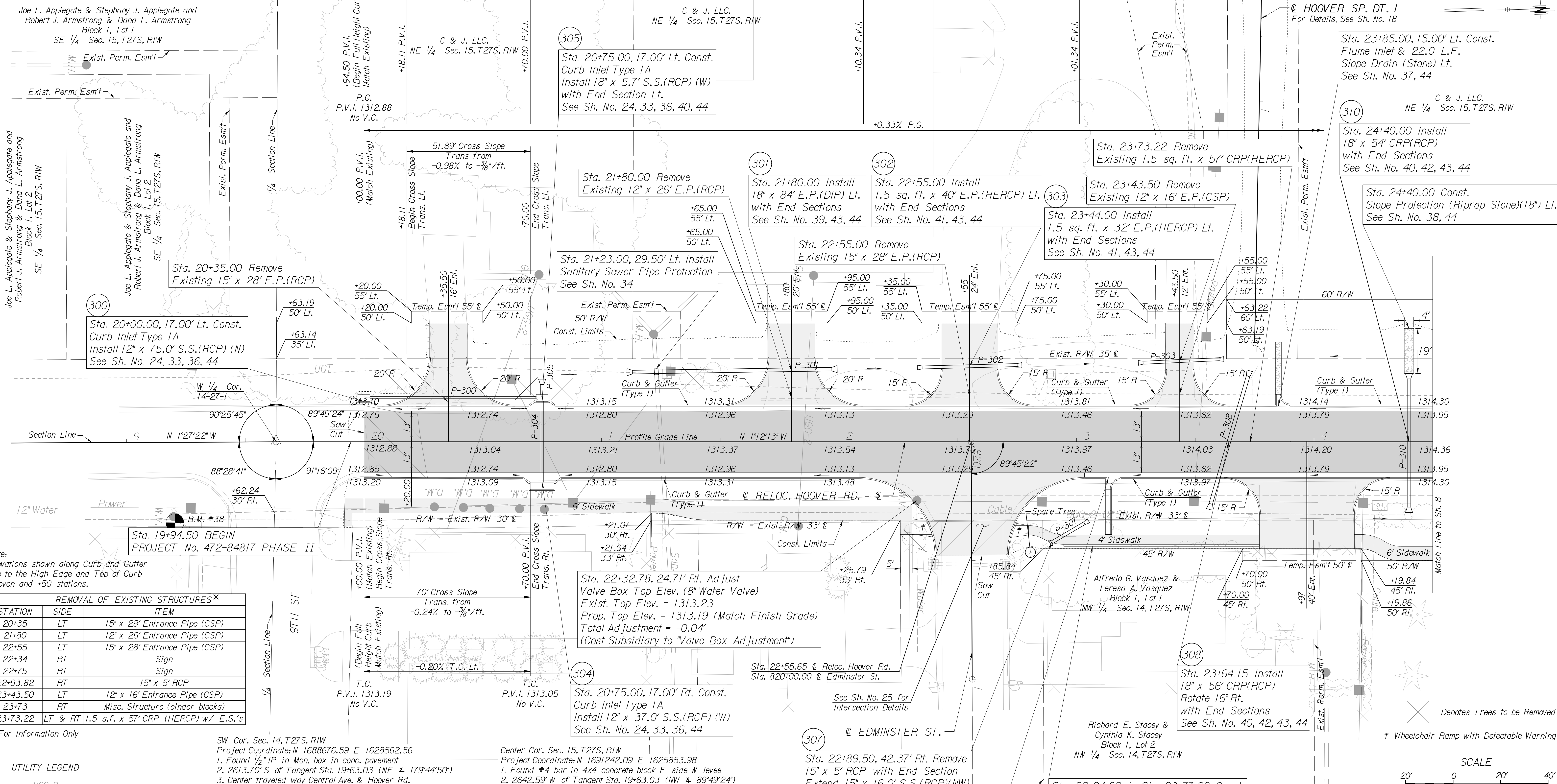


P.I. @ Sta. 19+63.03 =
W 1/4 Cor. Sec. 14, T27S, R1W
Deflection Angle = 00°15'10"
I. Sec. Reference Below



Note:
Elevations shown along Curb and Gutter
are to the High Edge and Top of Curb
at even and +50 stations.

STATION	SIDE	ITEM
20+35	LT	15' x 28' Entrance Pipe (CSP)
21+80	LT	12' x 26' Entrance Pipe (CSP)
22+55	LT	15' x 28' Entrance Pipe (CSP)
22+34	RT	Sign
22+75	RT	Sign
22+93.82	RT	15' x 5' RCP
23+43.50	LT	12' x 16' Entrance Pipe (CSP)
23+73	RT	Misc. Structure (cinder blocks)
23+73.22	LT & RT	1.5 s.f. x 57' CRP (HERCP) w/ E.S.'s

*For Information Only

UTILITY LEGEND

UGG-2	Black Hills Energy
Water	Wichita Water Utilities
San. Sew.	Wichita Water Utilities
Power	Westar Energy
Cable	Cox Communications
UGT	AT&T

SW Cor. Sec. 14, T27S, R1W
Project Coordinate: N 1688676.59 E 1628562.56
1. Found 1/2" IP in Man. box in conc. pavement
2. 2613.70' S of Tangent Sta. 19+63.03 (NE 1/4 179°44'50")
3. Center traveled way Central Ave. & Hoover Rd.
4. Existing "x" cut on top of curb midpoint of return 44.85' SW
5. Existing "x" cut on top of curb midpoint of return 45.52' SE
6. Existing "x" cut on top front face of curb inlet 64.44' NNW
7. Existing "x" cut on top front face of curb inlet 63.36' NNE

Center Cor. Sec. 15, T27S, R1W
Project Coordinate: N 1691242.09 E 1625853.98
1. Found #4 bar in 4x4 concrete block E side W levee
2. 2642.59' W of Tangent Sta. 19+63.03 (NW 1/4 89°49'24")
3. Existing 1/2" rebar E of CL of levee
4. Existing 1/2" rebar E of CL of levee
5. Existing 1/2" rebar E of CL of levee
6. E edge of top of W levee
7. Along levee to ext of line of high line poles far to E

Center Cor. Sec. 14, T27S, R1W
Project Coordinate: N 1691286.41 E 1631149.48
1. Found 1" bar in thimble
2. 2653.34' E of Tangent Sta. 19+63.03 (SE 1/4 88°28'41")
3. Existing base of spike & washer in S face of siren pole
4. Existing mag nail in W face of siren pole
5. Existing spike & washer in W face of light pole
6. Existing mag nail in SW face of light pole
7. Existing brass BM disk in concrete 5' S of sidewalk
8. Existing #3 stmpd on curb, S side 9th, 1.5' E of curbline jog

LEGEND

Asphalt	Concrete
Pavement Removal	Gravel
Riprap	



RELOCATED HOOVER ROAD
PLAN
STA. 20+00 TO STA. 24+50
CITY ENGINEER
JAMES L. ARMOUR, P.E., L.S.
PROJECT NUMBER 472-84817 PHASE II
OCA NUMBER 770005
DATE 11/2011
CITY ENGINEER'S OFFICE
CITY HALL - SEVENTH FLOOR
455 NORTH MAIN STREET
WICHITA, KANSAS 67202-1620
(316) 268-4501
SHEET 6 of 93

Plotted on: Thursday December 20, 2012 04:07 PM
Kechomaker
Plot Queue: \\svp000\jbs4891\hoover\CD\Plan\HW-Plan.dgn
Plot Scale: 20.000000:000000 Pen Table: \\svp000\jbs4891\hoover\CD\Plan\HW-Plan.dgn
Design Filename: \\svp000\jbs4891\hoover\CD\Plan\HW-Plan.dgn



- Denotes Trees to be Removed
+ Wheelchair Ramp with Detectable Warning

\\svp000\jbs4891\hoover\CD\Plan\HW-Plan.dgn