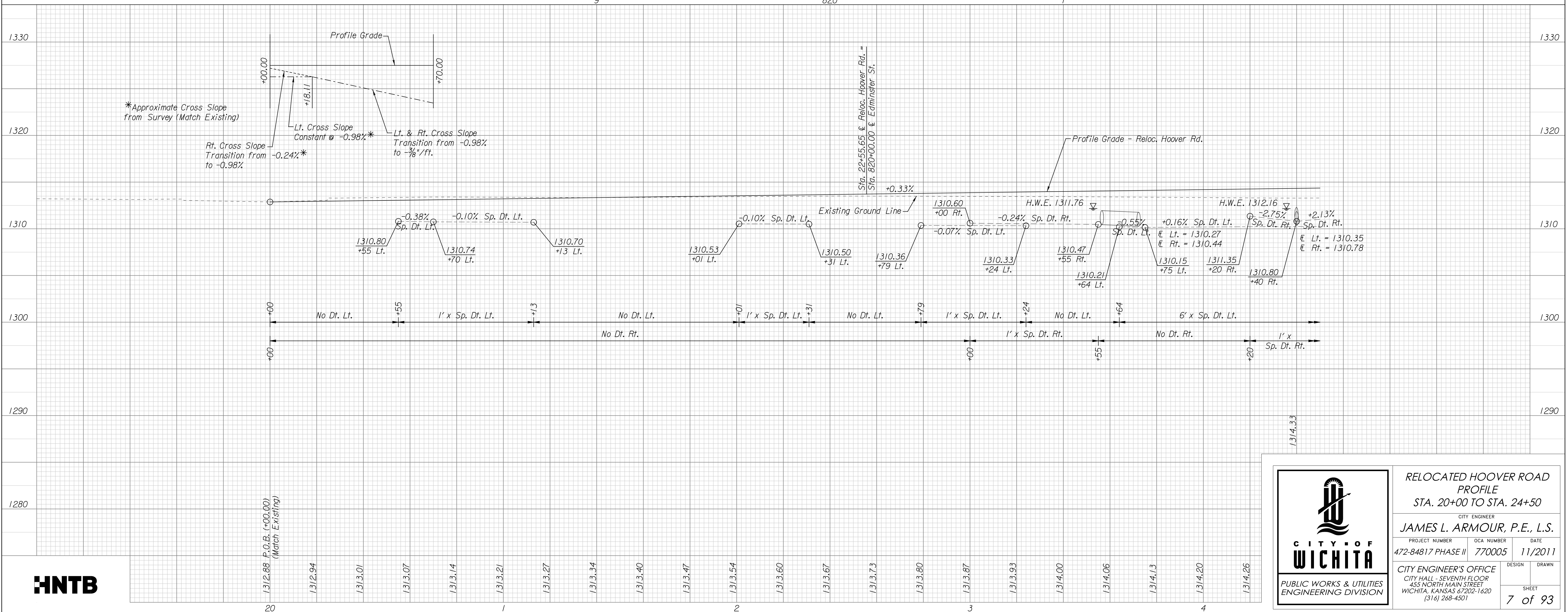
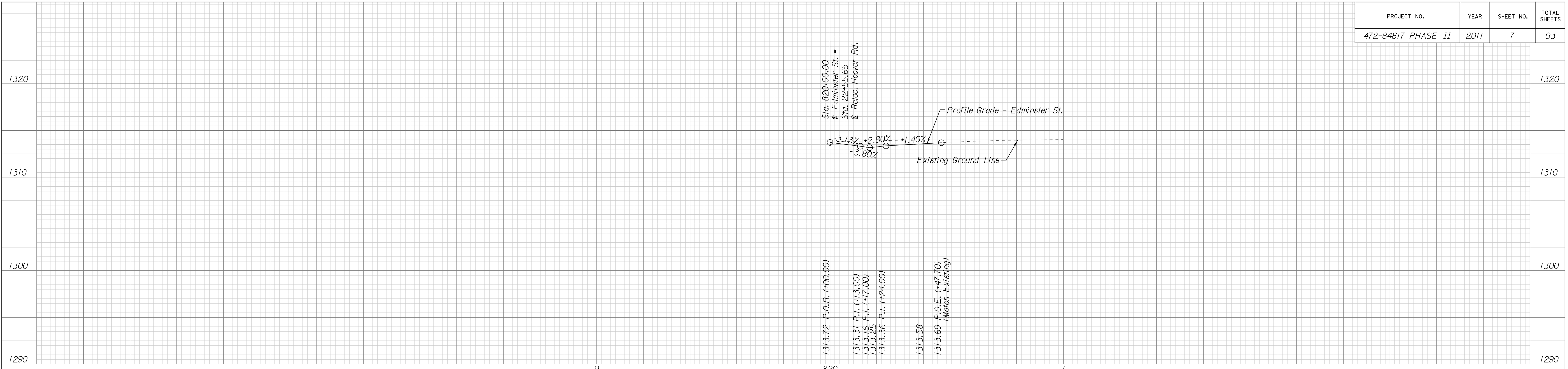


| | | | |
|--------------------|------|-----------|--------------|
| PROJECT NO. | YEAR | SHEET NO. | TOTAL SHEETS |
| 472-84817 PHASE II | 2011 | 7 | 93 |

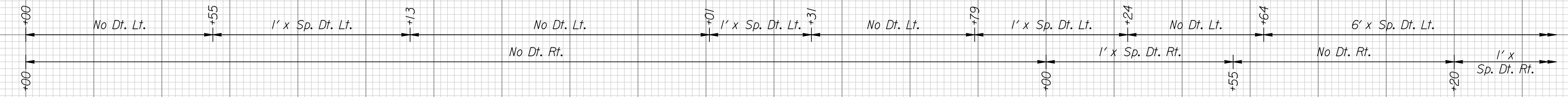


*Approximate Cross Slope from Survey (Match Existing)

Rt. Cross Slope Transition from to -0.98%

Lt. Cross Slope Constant @ -0.98%*

Lt. & Rt. Cross Slope Transition from -0.98% to -3/8' / ft.



20 1 2 3 4

Plotted on: Monday October 24, 2011 09:28 AM
 Plot Queue: \\ovp\00\PR\TBWLP
 Plot Scale: 20.000000:000000 Pen Table: \\ovp\00\Jobs\4809\Common\Highway\Library\lib\pen\CC-22x35.pen
 Design Filename: \\ovp\00\Jobs\4809\Hoover\CD\Profile\Hvr--prof.dgn



RELOCATED HOOVER ROAD
 PROFILE
 STA. 20+00 TO STA. 24+50

CITY ENGINEER
JAMES L. ARMOUR, P.E., L.S.

| | | |
|--------------------------------------|----------------------|-----------------|
| PROJECT NUMBER 472-84817 PHASE II | OCA NUMBER 770005 | DATE 11/2011 |
|--------------------------------------|----------------------|-----------------|

CITY ENGINEER'S OFFICE
 CITY HALL - SEVENTH FLOOR
 455 NORTH MAIN STREET
 WICHITA, KANSAS 67202-1620
 (316) 268-4501

DESIGN DRAWN
 SHEET
7 of 93