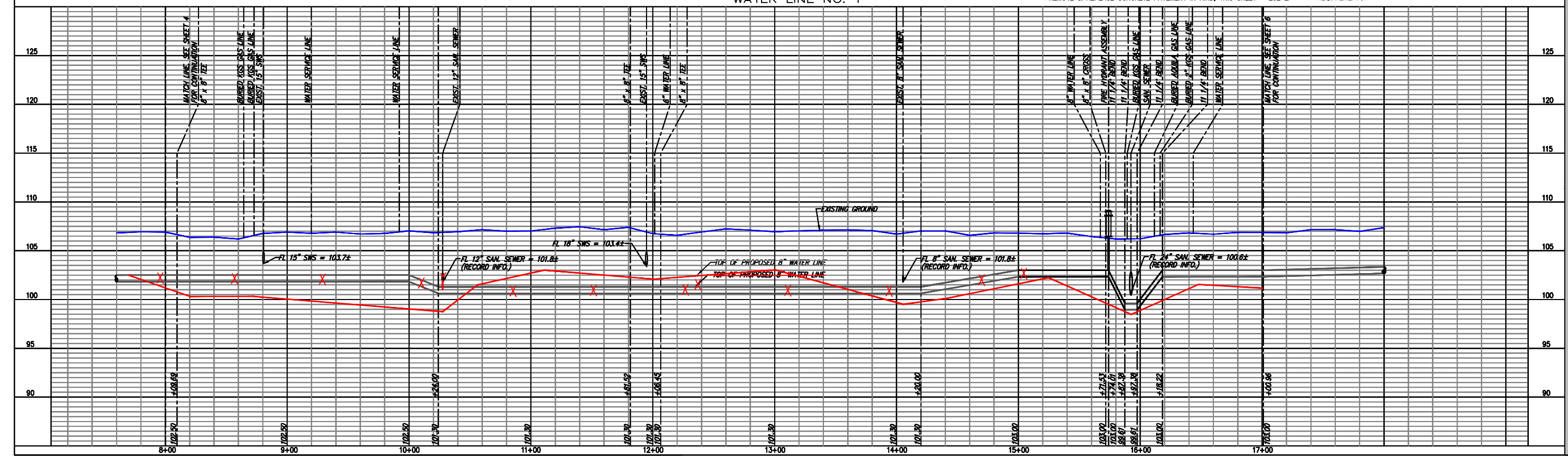


FIRE HYDRANTS REQUIRED			
STATION	BURY LINE ELEVATION	TOP OF PIPE ELEVATION	FIRE HYDRANT BURY REQUIRED*
WL NO. 1, STA. 15+74.09	106.88	103.00	4.5'

(FOR FIRE HYDRANT ASSEMBLY, SEE DETAIL, SHEET 27)



YOUNG & ASSOCIATES, P.A.
 Civil and Environmental Engineers
 100 S. Georgia, Derby, KS 67037
 Phone: (316) 788-2532 Fax: (316) 788-4108 Email: youngpa@earthlink.net

WATER LINE NO. 1 PLAN AND PROFILE

McCombs Creek Watershed
 City of Wichita, Sedgwick County, Kansas

PROJECT NO.	DATE	BY	APP.
2-15-07			

REVISIONS

NO.	DATE	DESCRIPTION

SHEET 5 of 37