

- LEGEND**
- PP UTILITY POLE
 - LP LIGHT POLE
 - DM DEAD MAN
 - WM WATER METER
 - WV WATER VALVE
 - GV GAS VALVE
 - SS MH SANITARY SEWER MANHOLE
 - SWS MH STORM SEWER MANHOLE

FIRE HYDRANTS REQUIRED

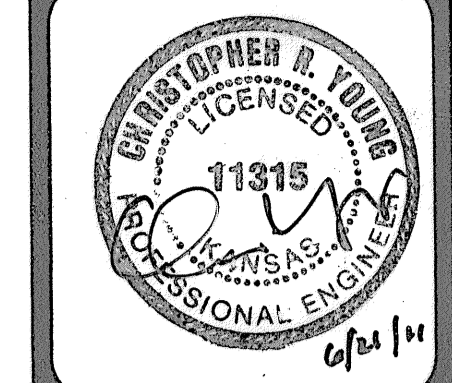
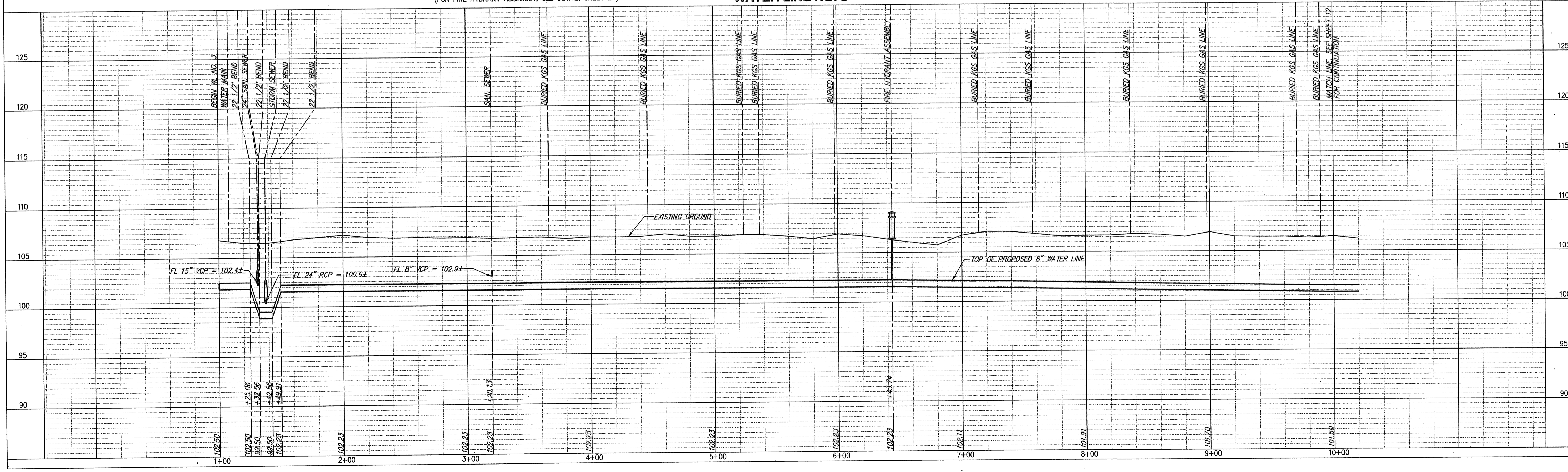
STATION	BURY LINE ELEVATION	TOP OF PIPE ELEVATION	FIRE HYDRANT BURY REQUIRED*
WL NO. 3, STA. 6+43.74	106.61	102.23	5.0'

(FOR FIRE HYDRANT ASSEMBLY, SEE DETAIL, SHEET 27)

WATER LINE NO. 3

REMOVE & REPLACE CONCRETE SIDEWALK IN KIND, THIS SHEET = 13 LF
 REMOVE & REPLACE CONCRETE DRIVEWAY IN KIND, THIS SHEET = 34 LF
 REMOVE & REPLACE CONCRETE PAVEMENT IN KIND, THIS SHEET = 87 LF

- NOTES:**
- UNLESS OTHERWISE INDICATED, DIMENSIONS ARE MEASURED TO CENTERLINE OF FITTINGS IN PLAN VIEW AND TOP OF PIPE IN PROFILE VIEW.
 - WL NO. 3 BASELINE = CENTERLINE OF MILLWOOD AVENUE RIGHT OF WAY.
 - REFER TO SHEET 2, NOTE NO. 8, FOR DIRECTIONAL DRILLING REQUIREMENTS.



YOUNG & ASSOCIATES, P.A.
 Civil and Environmental Engineers
 100 S. Georgia, Derby, KS 67037
 Tele: (316) 788-2552 • Fax: (316) 788-4408 • Email: youngpa@earthlink.net

**WATER LINE NO. 3
 PLAN AND PROFILE**
 McCormicks Water Main Replacement
 City of Wichita, Sedgwick County, Kansas

REVISIONS

NO.	DATE	BY	APP.	COMMENTS
1	2-15-07	DAS		DESIGNED
2		CRY		CHECKED
3				APPROVED