

YOUNG & ASSOCIATES, P.A.
 Civil and Environmental Engineers
 100 S. Georgia, Derby, KS 67037
 Phone: (316) 798-2552 Fax: (316) 798-4408 Email: young@yandem.com

**WATER LINE NO. 3
 PLAN AND PROFILE**
 McCormicks Water Main Replacement
 City of Wichita, Sedgwick County, Kansas

WL No. 3, BL Sta. 19+09.61, 32' Rt. =
 WL No. 3 Sta. 10+00.00
 Match Line, See Sheet 11 for Continuation.

Close 2 - 1" Corp Stops at approximately
 7' S. & 13' W. of the NW Curb Line & Cut Leads.

WL No. 3, BL Sta. 28+06.73, 37' Rt. =
 Existing Water Line
 1 - 8" x 8" Tapping Sleeve
 1 - 8" Tapping Valve
 1 - 6" Valve Box
 (To be furnished and set by
 City of Wichita Water Department)
 Top of Valve Box Elev. = Match Existing

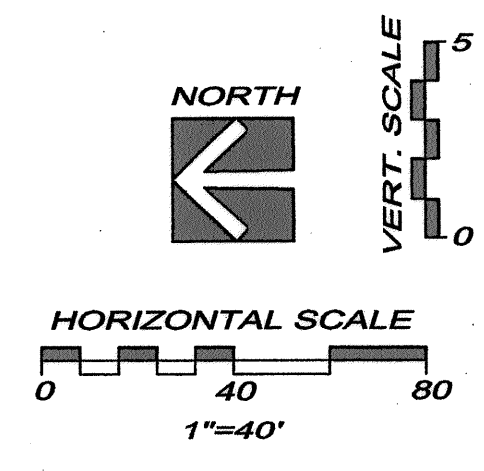
WL No. 3, BL Sta. 28+06.73, 32' Rt. =
 WL No. 3, Sta. 18+87.
 1 - 8" Valve Assembly (N)
 Top of Valve Box Elev. = Match Existing
 1 - 8" x 8" DI CL MJ Tee
 1 - 8" Plug (W)

WL No. 3, BL Sta. 23+48.03, 32' Rt. =
 WL No. 3, Sta. 14+38.41.
 1 - 8" x 8" DI CL MJ Tee (Rotated)
 4' - 8" DI CL Pipe (E)
 1 - 8" 90° DI CL MJ Bend
 4' - 8" DI CL Pipe (S)
 1 - 8" Valve Assembly (S)
 Top of Valve Box = Match Existing

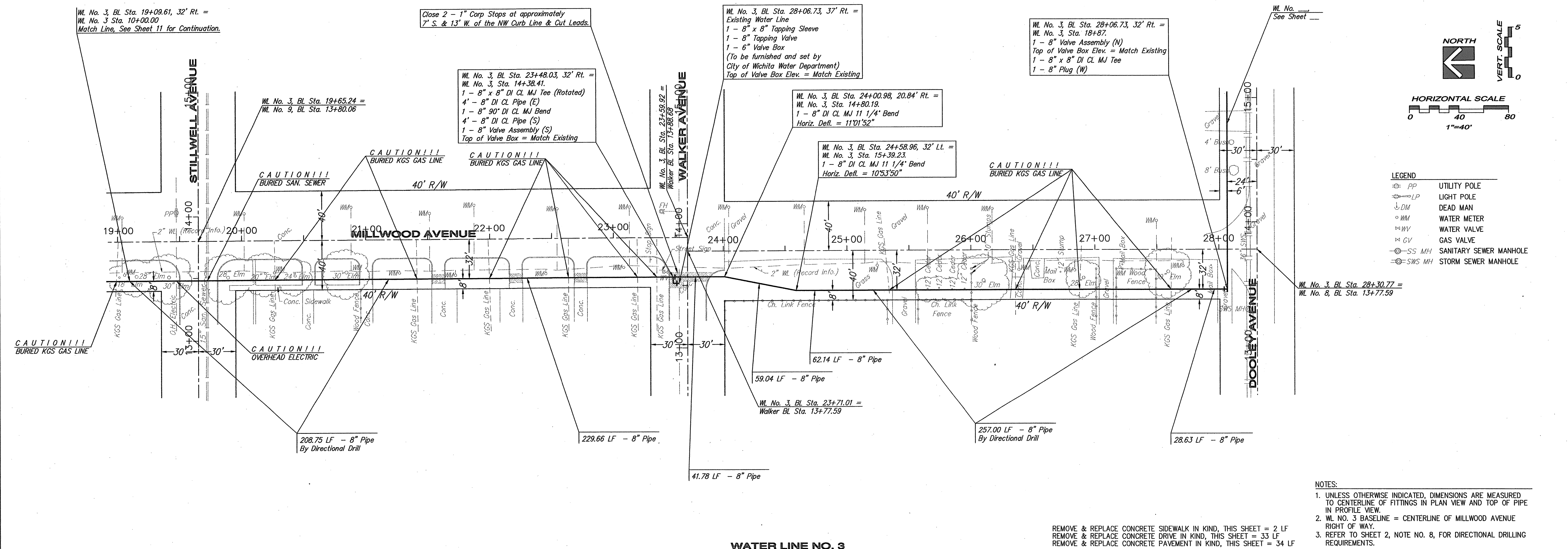
WL No. 3, BL Sta. 24+00.98, 20.84' Rt. =
 WL No. 3, Sta. 14+80.19.
 1 - 8" DI CL MJ 1 1/4" Bend
 Horiz. Defl. = 11'01"52"

WL No. 3, BL Sta. 24+58.96, 32' Lt. =
 WL No. 3, Sta. 15+39.23.
 1 - 8" DI CL MJ 1 1/4" Bend
 Horiz. Defl. = 10'53"50"

WL No. 3, BL Sta. 28+30.77 =
 WL No. 8, BL Sta. 13+77.59

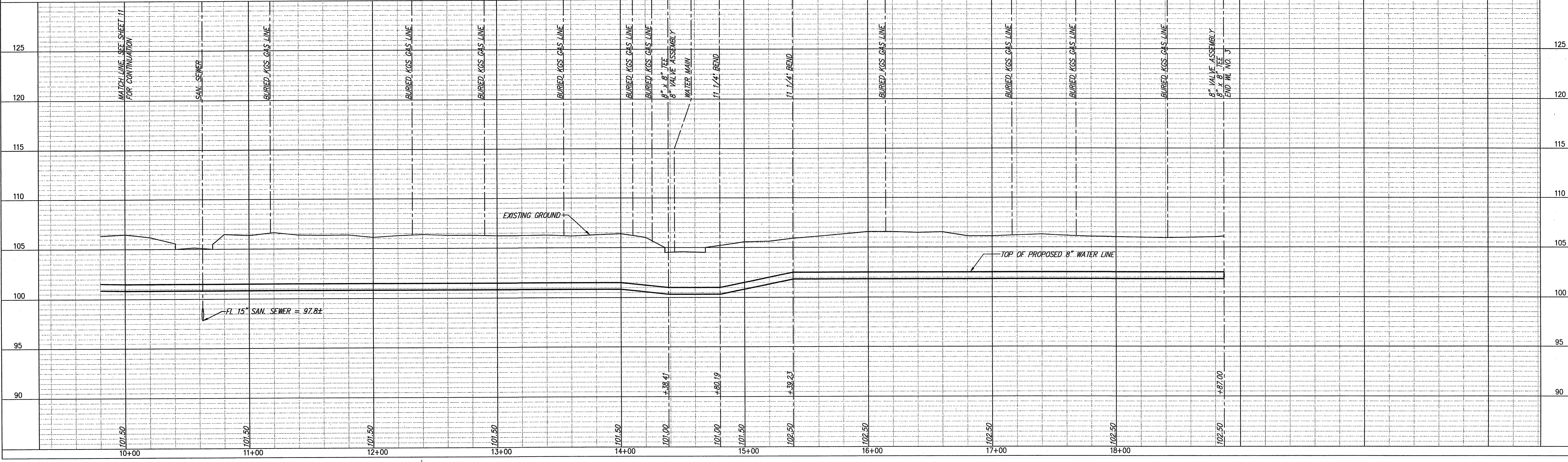


- LEGEND**
- PP UTILITY POLE
 - LP LIGHT POLE
 - DM DEAD MAN
 - WM WATER METER
 - WV WATER VALVE
 - GV GAS VALVE
 - SS MH SANITARY SEWER MANHOLE
 - SWS MH STORM SEWER MANHOLE



- NOTES:**
- UNLESS OTHERWISE INDICATED, DIMENSIONS ARE MEASURED TO CENTERLINE OF FITTINGS IN PLAN VIEW AND TOP OF PIPE IN PROFILE VIEW.
 - WL NO. 3 BASELINE = CENTERLINE OF MILLWOOD AVENUE RIGHT OF WAY.
 - REFER TO SHEET 2, NOTE NO. 8, FOR DIRECTIONAL DRILLING REQUIREMENTS.

REMOVE & REPLACE CONCRETE SIDEWALK IN KIND, THIS SHEET = 2 LF
 REMOVE & REPLACE CONCRETE DRIVE IN KIND, THIS SHEET = 33 LF
 REMOVE & REPLACE CONCRETE PAVEMENT IN KIND, THIS SHEET = 34 LF



PROJECT NO.	DATE	BY	APP.
06-228	2-15-07	DAS	
DESIGNED: DAS			
CHECKED: CRY			
APPROVED:			