



YOUNG & ASSOCIATES, P.A.
Civil and Environmental Engineers
100 S. Georgia, Derby, KS 67037
Tel: (316) 788-2582 Fax: (316) 788-4409 Email: young@benmath.com

Copyright 2008, by Young & Associates, P.A. All rights reserved. Prepared in the United States of America. The document, or parts thereof, or design or construction, is the property of Young & Associates, P.A. This plan and profile is the exclusive property of Young & Associates, P.A. The plan and profile is the property of the engineer of record and shall not be reproduced or published without the written permission of Young & Associates, P.A. The liability of the engineer of record shall not be limited by this publication.

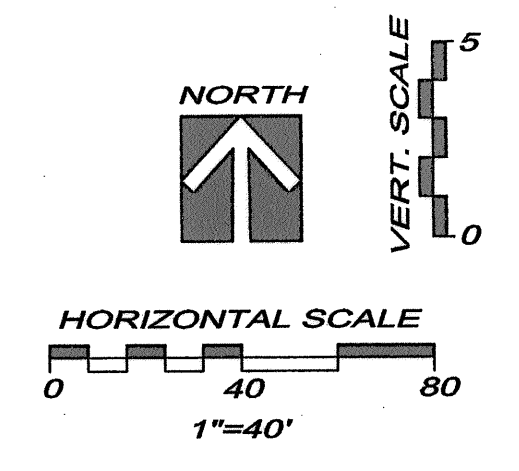
**WATER LINE NO. 8
PLAN AND PROFILE**

McCormicks Water Main Replacement

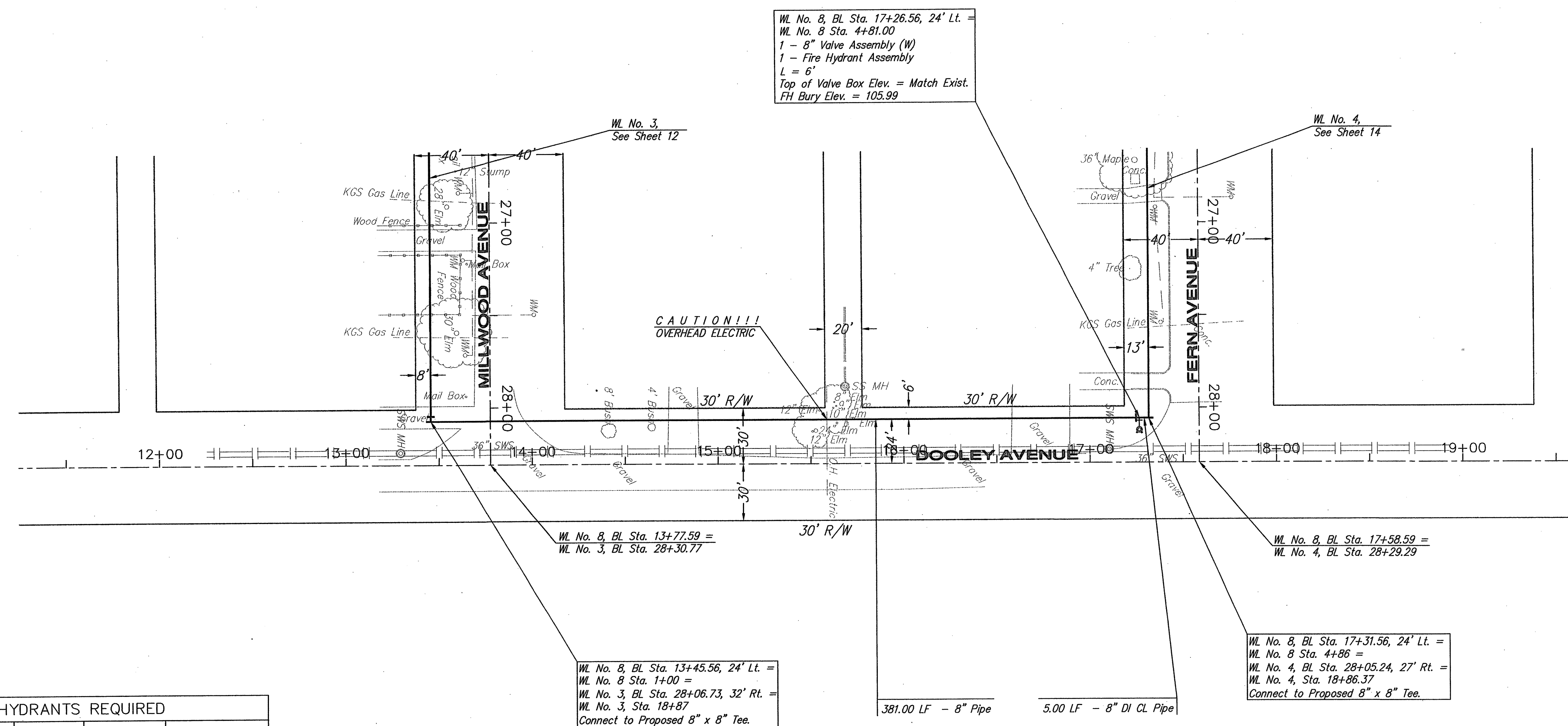
City of Wichita, Sedgewick County, Kansas

PROJECT NO.	DATE	BY	APP.
06-228	2-15-07	DAS	
		DESIGNED: DAS	
		CHECKED: CRY	
		APPROVED:	

SHEET
22
of 37



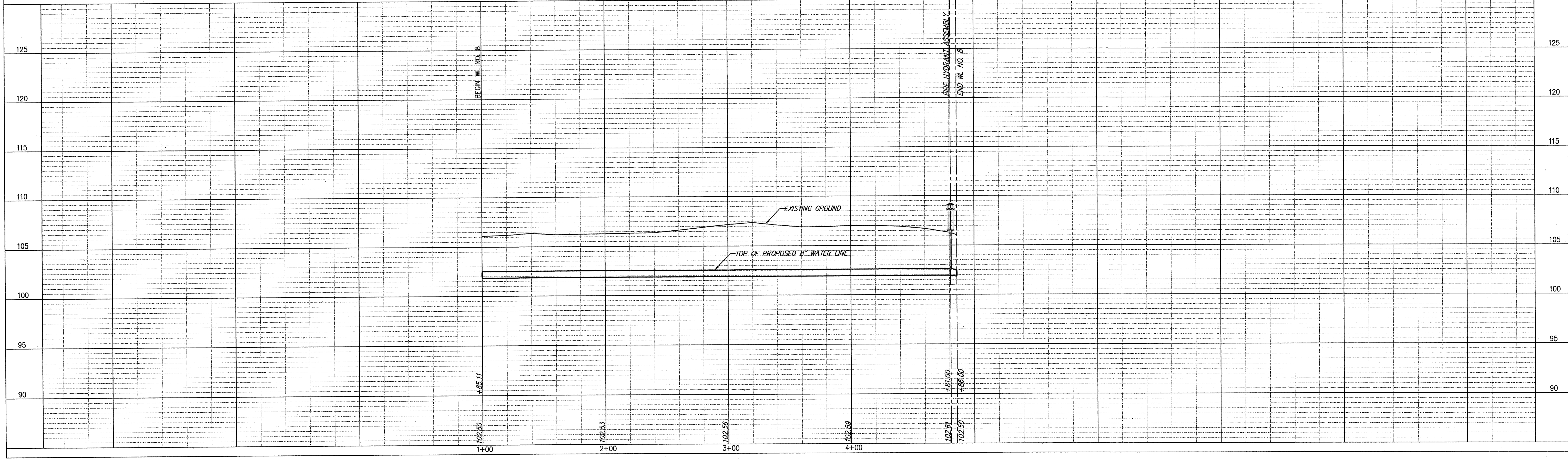
- LEGEND**
- ⊕ PP UTILITY POLE
 - ⊕ LP LIGHT POLE
 - DM DEAD MAN
 - WM WATER METER
 - WV WATER VALVE
 - GV GAS VALVE
 - SS MH SANITARY SEWER MANHOLE
 - SWS MH STORM SEWER MANHOLE



STATION	BURY LINE ELEVATION	TOP OF PIPE ELEVATION	FIRE HYDRANT BURY REQUIRED*
WL NO. 8, STA. 4+81	105.99	102.61	4.0'

(FOR FIRE HYDRANT ASSEMBLY, SEE DETAIL, SHEET 27)

WATER LINE NO. 8



WL No. 8, Bl. Sta. 17+26.56, 24' Lt. =
WL No. 8 Sta. 4+81.00
1 - 8" Valve Assembly (W)
1 - Fire Hydrant Assembly
L = 6'
Top of Valve Box Elev. = Match Exist.
FH Bury Elev. = 105.99

WL No. 8, Bl. Sta. 13+45.56, 24' Lt. =
WL No. 8 Sta. 1+00 =
WL No. 3, Bl. Sta. 28+06.73, 32' Rt. =
WL No. 3, Sta. 18+87
Connect to Proposed 8" x 8" Tee.

WL No. 8, Bl. Sta. 17+31.56, 24' Lt. =
WL No. 8 Sta. 4+86 =
WL No. 4, Bl. Sta. 28+05.24, 27' Rt. =
WL No. 4, Sta. 18+86.37
Connect to Proposed 8" x 8" Tee.

- NOTES:**
- UNLESS OTHERWISE INDICATED, DIMENSIONS ARE MEASURED TO CENTERLINE OF FITTINGS IN PLAN VIEW AND TOP OF PIPE IN PROFILE VIEW.
 - WL NO. 8 BASELINE = CENTERLINE OF DOOLEY AVENUE RIGHT-OF-WAY.
 - REFER TO SHEET 2, NOTE NO. 8, FOR DIRECTIONAL DRILLING REQUIREMENTS.