

YOUNG & ASSOCIATES, P.A.
Civil and Environmental Engineers
100 S. Georgia, Derby, KS 67037
tel: (316) 798-2552 fax: (316) 798-4408 email: youngpa@earthlink.net

**WATER LINE NO. 10
PLAN AND PROFILE**
McCormicks Water Main Replacement
City of Wichita, Sedgwick County, Kansas

PROJECT NO.	DATE	REVISIONS	BY	APP.
08-228	2-15-07			
		DESIGNED: DAS		
		CHECKED: GRY		
		APPROVED:		

WL No. 10, Bl. Sta. 36+72.13, 24' Lt. =
WL No. 10, Sta. 1+00
Existing Water Line
Remove Existing 2" Blowoff Assembly
Connect to Existing 8" Pipe
Provide Couplers and Adapters as Required
Install 1 - 2" IPT Plug in Existing 2" Valve
Remove & Cap Existing 2" Valve as Required.

WL No. 10, Bl. Sta. 36+77.12, 24' Lt. =
WL No. 10, Sta. 1+04.99
1 - Fire Hydrant Assembly
L = 4.5'
Top of Valve Box = Match Existing
FH Bury Elev. = 107.37

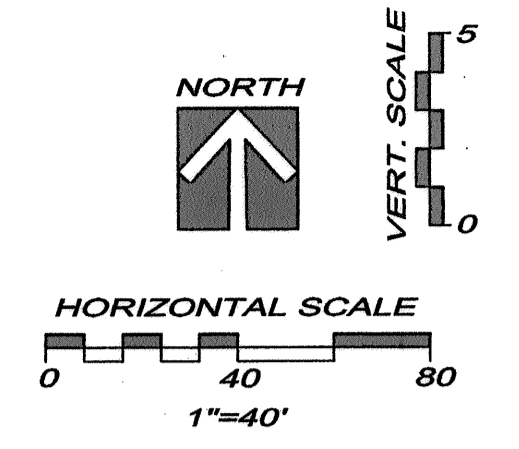
WL No. 10, Bl. Sta. 15+24.81 =
Walnut Bl. Sta. 13+70.93

WL No. 10, Bl. Sta. 43+20.84, 24' Lt. =
WL No. 10, Sta. 7+48.67
1 - 8" x 8" DI CL MJ Tee
1 - 8" Valve Assembly (S)
Top of Valve Box = Match Existing

WL No. 10, Bl. Sta. 43+54.76, 24' Lt. =
WL No. 10, Sta. 7+82.72
Horiz. Defl. = 0'11"15" (Rt.)

WL No. 10, Bl. Sta. 43+72.05, 24' Lt. =
WL No. 10, Sta. 8+00.00
Match Line, See Sheet 25 for Continuation.

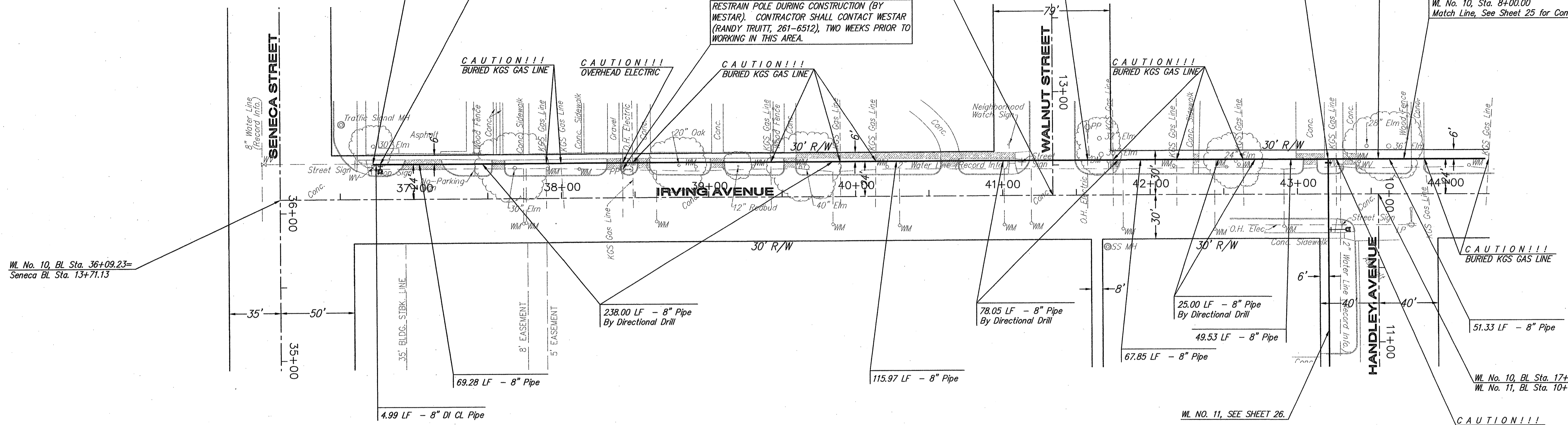
WL No. 10, Bl. Sta. 17+45.63 =
WL No. 11, Bl. Sta. 10+00.00



LEGEND

⊕	UTILITY POLE
⊕	LIGHT POLE
⊕	DEAD MAN
⊕	WATER METER
⊕	WATER VALVE
⊕	GAS VALVE
⊕	SANITARY SEWER MANHOLE
⊕	STORM SEWER MANHOLE

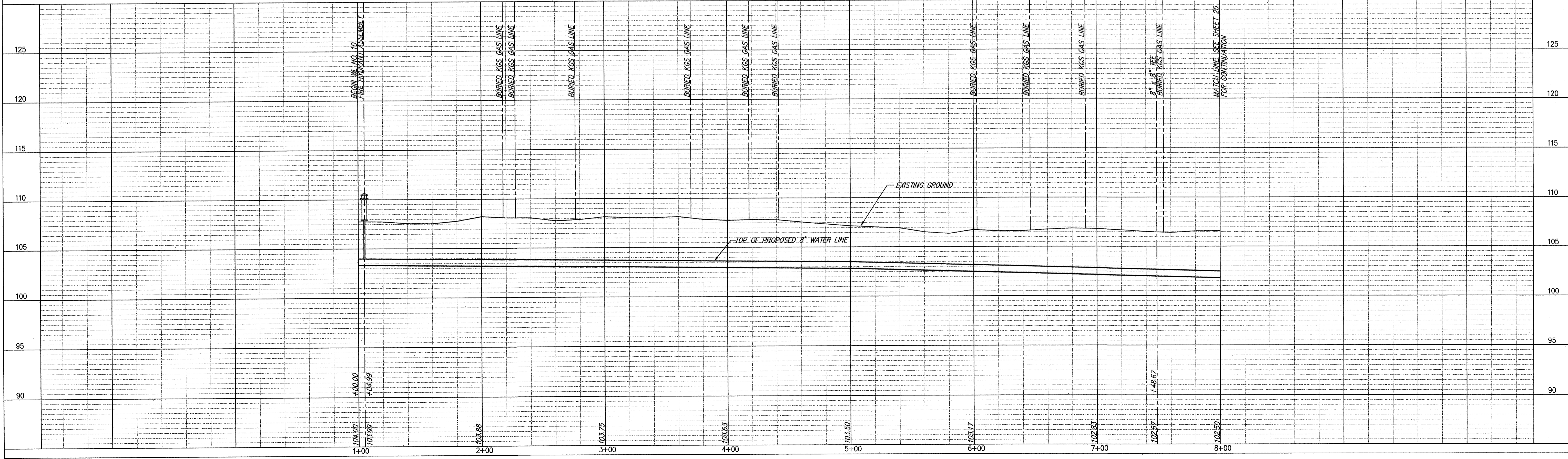
- NOTES:
- UNLESS OTHERWISE INDICATED, DIMENSIONS ARE MEASURED TO CENTERLINE OF FITTINGS IN PLAN VIEW AND TOP OF PIPE IN PROFILE VIEW.
 - WL NO. 10 BASELINE = CENTERLINE OF IRVING AVENUE RIGHT-OF-WAY.
 - REFER TO SHEET 2, NOTE NO. 8, FOR DIRECTIONAL DRILLING REQUIREMENTS.



FIRE HYDRANTS REQUIRED			
STATION	BURY LINE ELEVATION	TOP OF PIPE ELEVATION	FIRE HYDRANT BURY REQUIRED*
WL NO. 10, STA. 1+04.99	107.37	103.99	4.0'

(FOR FIRE HYDRANT ASSEMBLY, SEE DETAIL, SHEET 27)

WATER LINE NO. 10



REMOVE & REPLACE WHEELCHAIR RAMP, THIS SHEET = 1 EA
REMOVE & REPLACE CONCRETE SIDEWALK IN KIND, THIS SHEET = 153 LF
REMOVE & REPLACE CONCRETE DRIVE IN KIND, THIS SHEET = 115 LF