

WL No. 10, BL Sta. 43+72.05, 24' Lt. =
 WL No. 10, Sta. 8+00
 Match Line, See Sheet 24 for Continuation.

WL No. 10, BL Sta. 47+04.59, 24.00' Lt. =
 WL No. 10, Sta. 11+32.53
 Existing 8" Water Line
 1 - 8" x 8" Tapping Sleeve
 1 - 8" Tapping Valve
 1 - 6" Valve Box
 (To be furnished and set by City of Wichita
 Water Department)
 Top of Valve Box = Match Existing

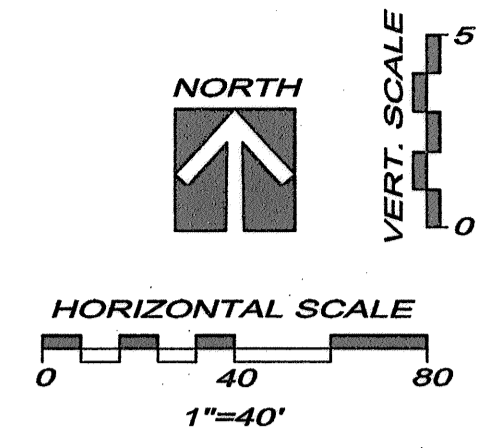
CAUTION!!!
 BURIED KGS GAS LINE

CAUTION!!!
 BURIED KGS GAS LINE

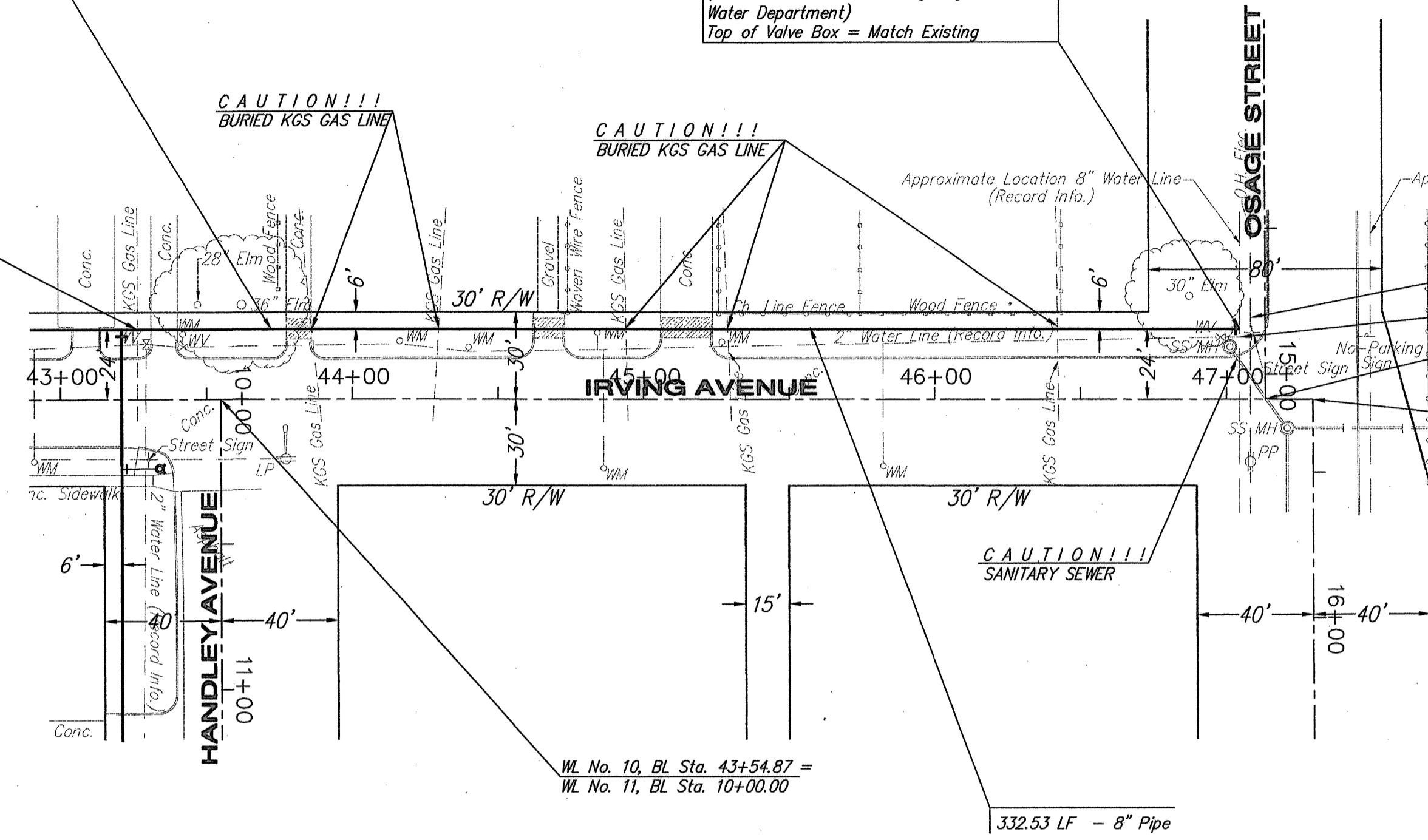
CAUTION!!!
 BURIED KGS GAS LINE

CAUTION!!!
 OVERHEAD ELECTRIC

Close 2 - 1" Corp Stops at approximately
 38.5' E. & 29' S. of SE Corner of
 House # 1023 S. Osage.



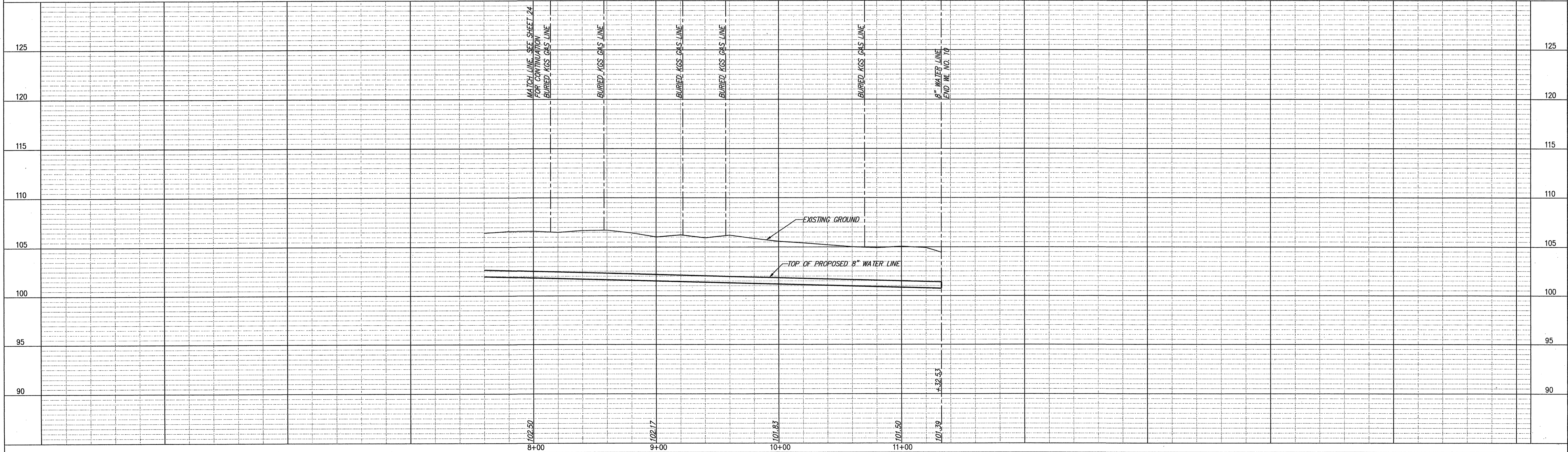
- LEGEND**
- PP UTILITY POLE
 - LP LIGHT POLE
 - DM DEAD MAN
 - WM WATER METER
 - WV WATER VALVE
 - GV GAS VALVE
 - SS MH SANITARY SEWER MANHOLE
 - SWS MH STORM SEWER MANHOLE



WATER LINE NO. 10

REMOVE & REPLACE CONCRETE DRIVE IN KIND, THIS SHEET = 37 LF

- NOTES:**
- UNLESS OTHERWISE INDICATED, DIMENSIONS ARE MEASURED TO CENTERLINE OF FITTINGS IN PLAN VIEW AND TOP OF PIPE IN PROFILE VIEW.
 - WL NO. 10 BASELINE = CENTERLINE OF IRVING AVENUE RIGHT-OF-WAY.
 - REFER TO SHEET 2, NOTE NO. 8, FOR DIRECTIONAL DRILLING REQUIREMENTS.



YOUNG & ASSOCIATES, P.A.
 Civil and Environmental Engineers
 100 S. Geoville, Derby, KS 67037
 Phone: (316) 788-2552 Fax: (316) 788-4408 Email: youngpa@nemain.com

Copyright 2006, by Young & Associates, P.A., all rights reserved. Prepared in the United States of America. This drawing is the property of Young & Associates, P.A., and may not be reproduced in any form without the written permission of Young & Associates, P.A. The drawing of this project or copies thereof does not constitute publication thereof.

**WATER LINE NO. 10
 PLAN AND PROFILE**

McCormicks Water Main Replacement

City of Wichita, Sedgewick County, Kansas

| PROJECT NO. | DATE | BY | APP. |
|---------------|-------|----|------|
| 06-2281 | 15-07 | | |
| DESIGNED: DAS | | | |
| CHECKED: GRY | | | |
| APPROVED: | | | |