

**YOUNG & ASSOCIATES, P.A.**  
 Civil and Environmental Engineers  
 100 S. Georgia, Derby, KS 67037  
 tele: (316)788-2552 fax: (316)788-4408 email: young@yandem.com

Copyright 2006 by Young & Associates, P.A. All rights reserved. Prepare in the United States of America. This drawing is the property of Young & Associates, P.A. and may not be reproduced in any form without the written permission of Young & Associates, P.A. The liability of this original or copies thereof shall constitute publication thereof.

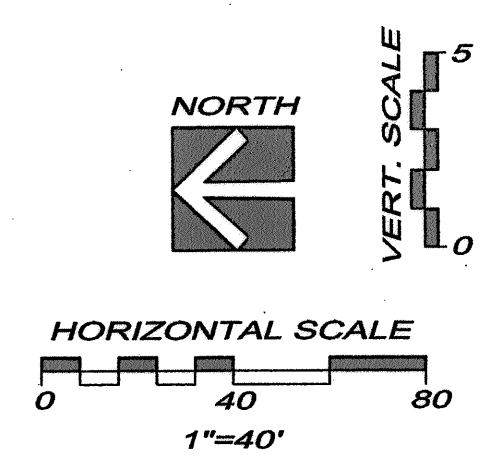
**WATER LINE NO. 11  
 PLAN AND PROFILE**

**McCormicks Water Main Replacement**

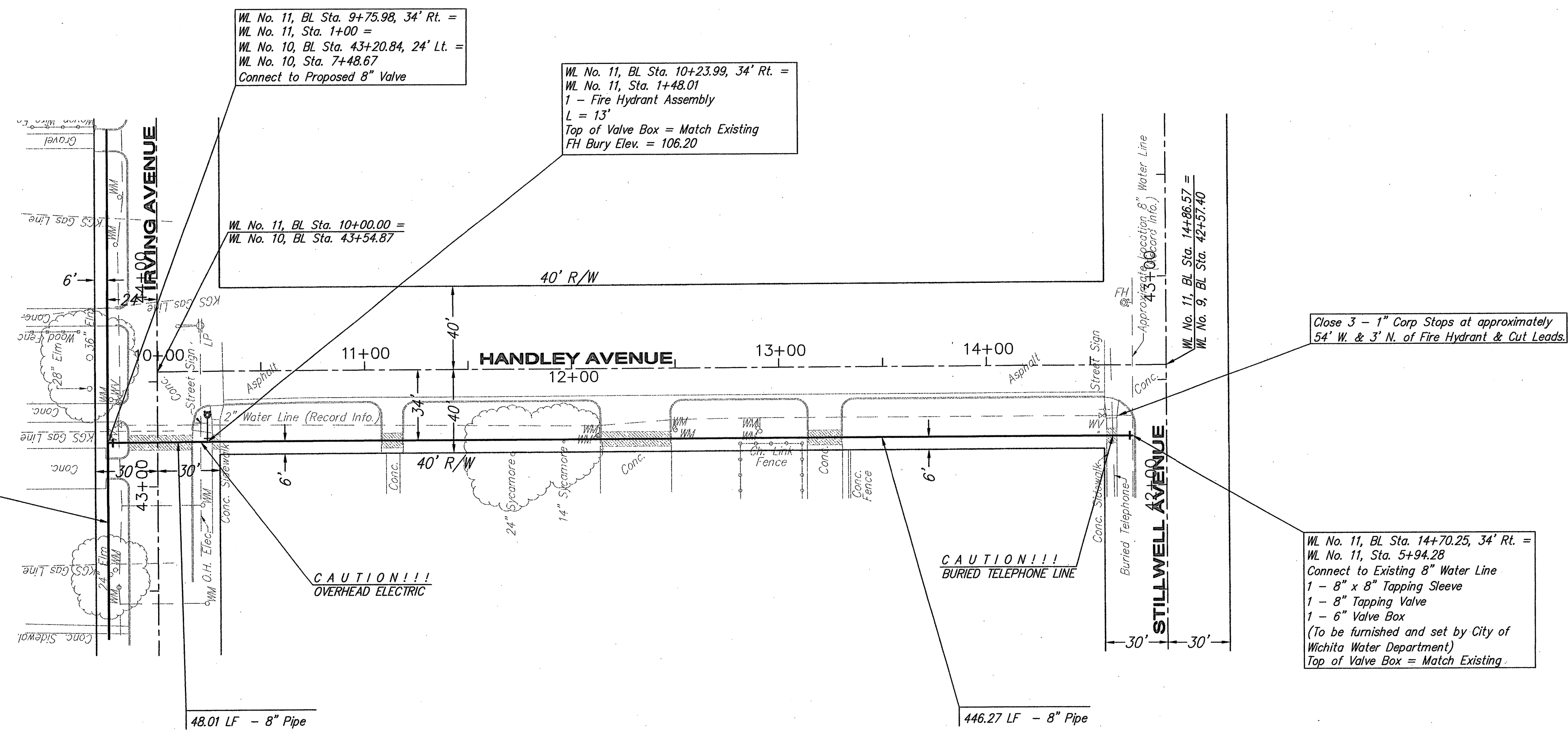
City of Wichita, Sedgwick County, Kansas

PROJECT NO.	DATE	REVISIONS	BY	APP.
06-228	2-15-07			

SHEET  
 26  
 of 37



- LEGEND**
- PP UTILITY POLE
  - LP LIGHT POLE
  - DM DEAD MAN
  - WM WATER METER
  - WV WATER VALVE
  - GV GAS VALVE
  - SS MH SANITARY SEWER MANHOLE
  - SWS MH STORM SEWER MANHOLE



**FIRE HYDRANTS REQUIRED**

STATION	BURY LINE ELEVATION	TOP OF PIPE ELEVATION	FIRE HYDRANT BURY REQUIRED*
WL NO. 11, STA. 1+48.01	106.20	102.32	4.5'

(FOR FIRE HYDRANT ASSEMBLY, SEE DETAIL, SHEET 27)

- NOTES:**
- UNLESS OTHERWISE INDICATED, DIMENSIONS ARE MEASURED TO CENTERLINE OF FITTINGS IN PLAN VIEW AND TOP OF PIPE IN PROFILE VIEW.
  - WL NO. 11 BASELINE = CENTERLINE OF HANDLEY AVENUE RIGHT-OF-WAY.
  - REFER TO SHEET 2, NOTE NO. 8, FOR DIRECTIONAL DRILLING REQUIREMENTS.

**WATER LINE NO. 11**

