

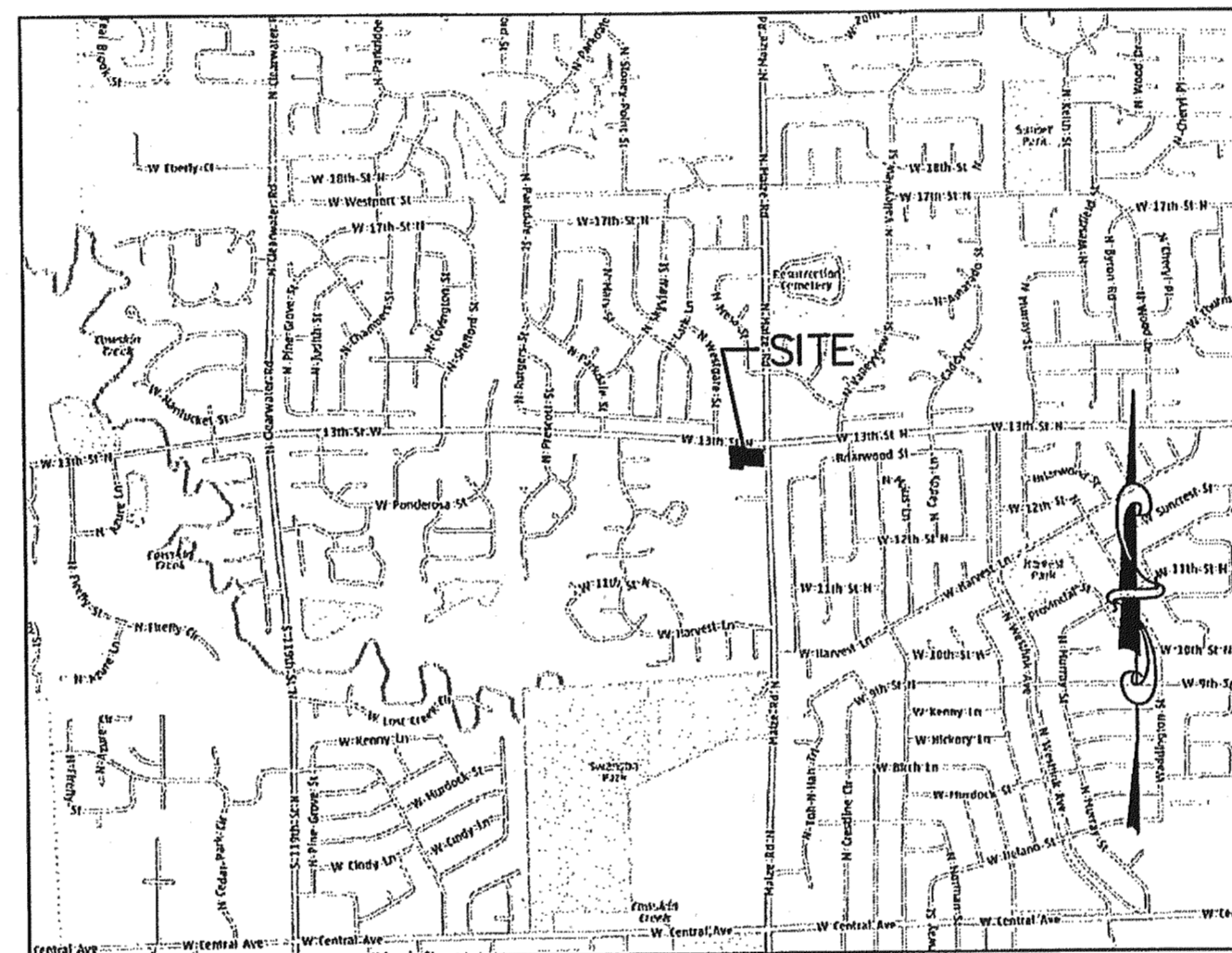
PRIVATE PROJECT WATER LINE & HYDRANT PLAN TO SERVE

CVS/pharmacy®

CITY OF WICHITA PROJECT NO. 1674 PPW (607853)

CS#64724 STORE#10077 SWC 13TH AND MAIZE
WICHITA, KS

LOT 1 OF BRANDT COMMERCIAL 2ND ADDITION
ZONED: LC LIMITED COMMERCIAL
TAX ID#134180110400100, 134180110400202

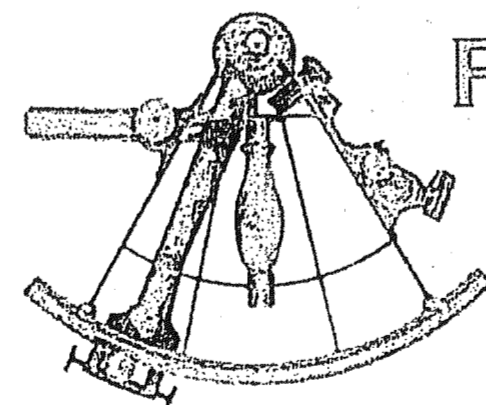


VICINITY MAP
NOT TO SCALE

- EXIST. UTILITY SYMBOL LEGEND**
- G = GAS MAIN
 - W = WATER MAIN
 - SS = SANITARY SEWER
 - SWS = STORM WATER SEWER
 - UGE = UNDER GROUND ELECTRIC
 - UGT = UNDER GROUND TELEPHONE
 - B.M. BENCH MARK
 - TELE. PED TELEPHONE PEDESTAL
 - CATV CABLE TELEVISION PEDESTAL
 - E.B. ELECTRIC BOX
 - F.H. FIRE HYDRANT
 - ← GUY ANCHOR
 - HIGH LINE POLE
 - ICV IRRIGATION CONTROL VALVE
 - L.P. LIGHT POLE
 - ▲ POWER POLE
 - ⋈ SIGN
 - T.S. TRAFFIC SIGNAL
 - T.S.C.B. TRAFFIC SIGNAL CONTROL BOX
 - W.M. WATER METER
 - W.V. WATER VALVE
 - XFMR ELECTRIC TRANSFORMER
 - KG M.H. KANSAS GAS ELECTRIC MANHOLE
 - SS M.H. SANITARY SEWER MANHOLE
 - SWS M.H. STORM WATER SEWER MANHOLE
 - B.H. BORE HOLE

On Site Benchmarks:
B.M. #1: Square Cut top of Walk
@ S.E. Corner Lot 2, Block 1, Brandt Commercial Addition
Elevation = 1345.59 NAVD88
B.M. #2: "X" Cut on Walk 100' W. & 10' S.
N.E. Corner of Lot 2, Block 1, Brandt Commercial Addition
Elevation = 1348.49 NAVD88
B.M. #3: Square Cut top of Curb @ N.W. Corner
Lot 2, Block 1, Brandt Commercial Addition
Elevation = 1347.43 NAVD88

PREPARED BY:



PREMIER CIVIL
ENGINEERING

308 TCW Court
Lake Saint Louis, MO 63367
Phone: (314) 925-7444 Fax: (314) 925-7457

ALWAYS CALL
BEFORE YOU DIG
CALL 811



DATE: 6/1/2012
PCE PROJECT NUMBER: 113201

PROJECT DIRECTORY

OWNER
CVS REALTY, CO.
1165 N CLARK ST SUITE 305
CHICAGO, IL 60610
(312) 953-6322
CONTACT: MR. RICHARD E. SMART

DEVELOPER
VELMEIR COMPANIES
5757 W. MAPLE, SUITE 800
WEST BLOOMFIELD, MI 48322
(248) 794-9768
CONTACT: MR. JIM COLLIER

ARCHITECT
NORR, LLC
719 GRISWOLD STREET
DETROIT, MI 48226
(313) 324-3100
CONTACT: MR. SCOTT ROBACH

CIVIL ENGINEER
PREMIER CIVIL ENGINEERING, LLC
308 TCW COURT
LAKE SAINT LOUIS, MO 63367
(314) 925-7452
CONTACT: MR. MATT FOGARTY

SURVEYOR
SAVOY COMPANY, P.A.
433 S. HYDRAULIC
WICHITA, KS 67211
(316) 265-0005
CONTACT: MR. MARK SAVOY

MUNICIPALITY
CITY OF WICHITA, KS

GEOTECHNICAL/ENVIRONMENTAL ENGINEER
TERRACON CONSULTANTS
1815 S. EISENHOWER
WICHITA, KS 67209
(316) 262 0717
CONTACT: GEORGE A. EL TANNOURY, P.E.

CITY OF WICHITA TRAFFIC ENGINEER
CONTACT: PAUL GUNZELMAN, P.E.
455 N. MAIN ST. 7TH FLOOR
WICHITA, KS 67202
316-268-4393

UTILITY PROVIDERS

WESTAR ENERGY
(316) 261-6734
CONTACT: MRS. MARSHA JESSE

KANSAS GAS SERVICE
(316) 832-3126
CONTACT: MR. JIM COE
AT&T
(314) 957-3789
CONTACT: MR. MARK ADAMS

**PUBLIC WORKS & UTILITIES
STORMWATER MANAGEMENT DIVISION**
CITY HALL, 8TH FLOOR
455 N. MAIN
WICHITA, KANSAS 67202
(316) 268-4498
CONTACT: SCOTT LINDEBAK

CITY OF WICHITA WATER UTILITIES
CITY HALL, 8TH FLOOR
455 N. MAIN
WICHITA, KANSAS 67202
(316) 268-4555
CONTACT: GREG LOLLEY

ELECTRONIC DRAWING NOTE:
ELECTRONIC MEDIA OR DIGITAL DRAWINGS ARE INSTRUMENT OF PROFESSIONAL SERVICES. OWNERSHIP OF SUCH WILL BE RETAINED BY THE CIVIL ENGINEER AND MAY NOT BE RELEASED TO CONTRACTORS. CONTRACTORS ARE ADVISED TO CREATE BIDS BASED ON THE USE OF PAPER COPIES OF THE PLANS.

NOTE
Underground utilities and structures have been plotted from available information and therefore, their location must be considered approximate only. It is the responsibility of the individual contractors to notify the utility companies before actual construction.

APPROVED AS NOTED
BY CITY ENGINEER OF WICHITA
& BY WICHITA FIRE DEPARTMENT
Water Mains (Engineering) Julianne Kellman 8-24-12
Water Mains (Utility) Greg Lolley 8-28-12
Fire Prot. Line [Signature] 8-29-12

NOTE TO CONTRACTORS
PUBLIC PROPERTY:
Inspection and testing for the waterline is to be provided by a Licensed Consulting Engineering Firm under contract with the Owner/Developer. Said inspection to be in accordance with the City of Wichita standard construction engineering practices and certified by a Licensed Professional Engineer licensed in the State of Kansas. No work shall be performed in dedicated easements or public right-of-way by the Contractor without such inspection nor shall any work be commenced without written authorization by the City Engineer. All Construction and Materials shall comply with the City of Wichita Specifications and Standards (on file and available in the City Engineer's Office).

PRIVATE PROPERTY:
Installation and testing for the fire protection line is to be performed by a City of Wichita licensed fire protection contractor in accordance with the fire codes as adopted by the City of Wichita. All materials and construction practices for the fire protection line shall comply with the fire codes as adopted by the City of Wichita (available from the City of Wichita Fire Department). The Contractor shall not commence work without notification and approval of the Wichita Fire Department.
Inspection of the fire protection line is to be provided by the City of Wichita Fire Department and by a Licensed Consulting Engineering Firm under contract with the Owner/Developer.
The contractor shall not start work until the project inspector is assigned to the project and present on the site. Any work done without inspection will be required to be uncovered for inspection.

AS BUILT PLANS

CONTRACTOR:	McCullough Excavation
INSPECTOR:	Ryan McCullough P.E., McCullough Excavation
PDF BY:	RDM 1-15-2013

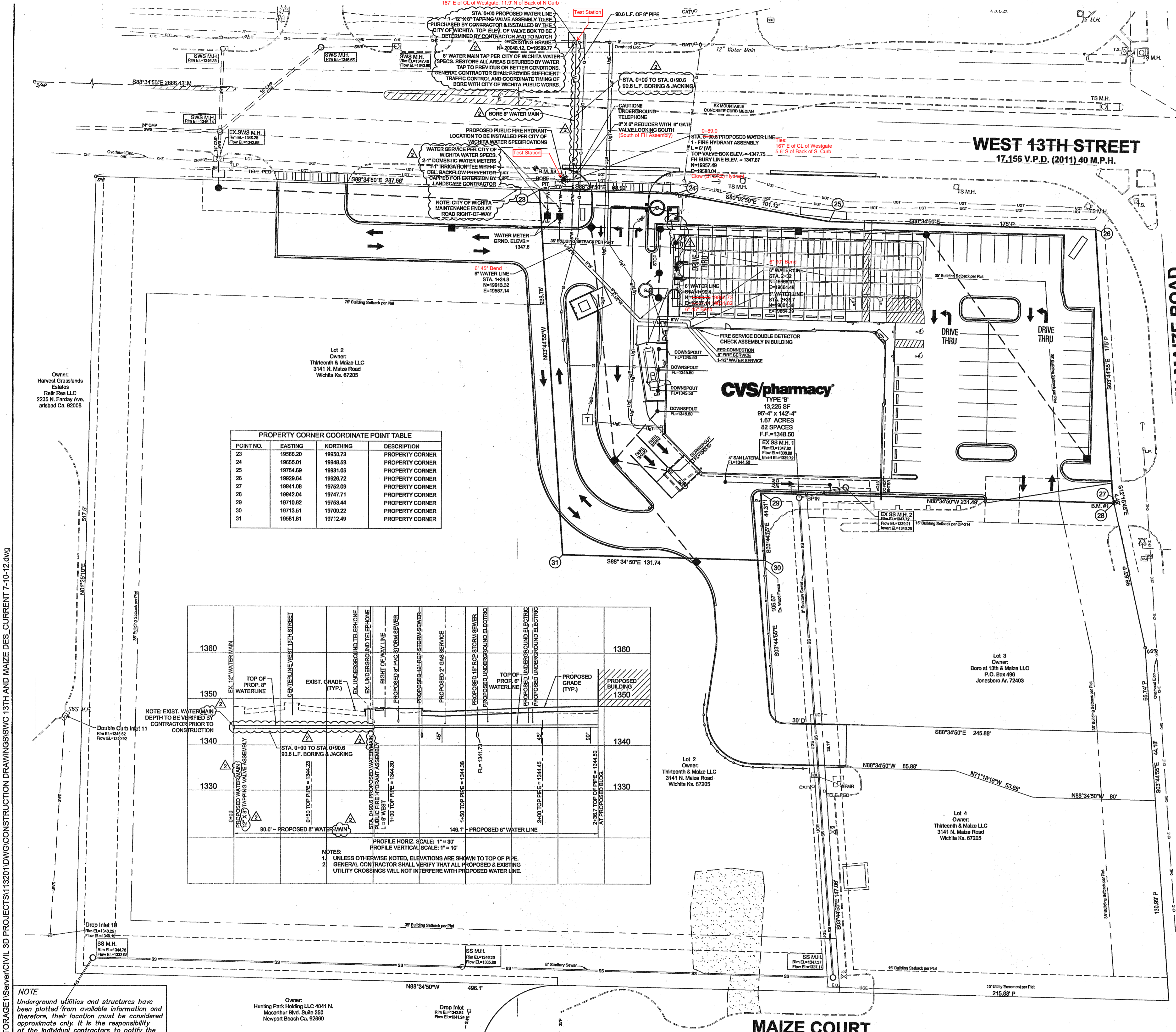
SHEET INDEX

- C-3A WATER COVER SHEET
- C-3B WATER PLAN SHEET
- C-8.2 UTILITY DETAILS

REVISIONS:

NO.	DESCRIPTION:	INITIALS:	DATE:
1	CREATED SEPARATE PLAN FOR WATER	JW	7/17/12
2	REVISED SHEETS C-3A AND C-3B	JW	8/13/12

I:\STORAGE\1Server\CIVIL 3D PROJECTS\113201\DWG\CONSTRUCTION DRAWINGS\SWC 13TH AND MAIZE DES. CURRENT 7-10-12.dwg



PROPERTY CORNER COORDINATE POINT TABLE

POINT NO.	EASTING	NORTHING	DESCRIPTION
23	19568.20	19550.73	PROPERTY CORNER
24	19555.01	19548.53	PROPERTY CORNER
25	19754.89	19531.05	PROPERTY CORNER
26	19529.64	19526.72	PROPERTY CORNER
27	19841.08	19752.09	PROPERTY CORNER
28	19942.04	19747.71	PROPERTY CORNER
29	19710.82	19753.44	PROPERTY CORNER
30	19713.51	19709.22	PROPERTY CORNER
31	19581.81	19712.49	PROPERTY CORNER

PROFILE VIEW

STATION	DESCRIPTION	ELEVATION
1360	TOP OF PROP. 6" WATERLINE	1342.30
1350	EXIST. GRADE (TYP.)	1342.30
1340	TOP OF PROP. 6" WATERLINE	1344.30
1330	TOP OF PROP. 6" WATERLINE	1344.45
1320	TOP OF PROP. 6" WATERLINE	1344.50
1310	TOP OF PROP. 6" WATERLINE	1344.50
1300	TOP OF PROP. 6" WATERLINE	1344.50
1290	TOP OF PROP. 6" WATERLINE	1344.50
1280	TOP OF PROP. 6" WATERLINE	1344.50
1270	TOP OF PROP. 6" WATERLINE	1344.50
1260	TOP OF PROP. 6" WATERLINE	1344.50
1250	TOP OF PROP. 6" WATERLINE	1344.50
1240	TOP OF PROP. 6" WATERLINE	1344.50
1230	TOP OF PROP. 6" WATERLINE	1344.50
1220	TOP OF PROP. 6" WATERLINE	1344.50
1210	TOP OF PROP. 6" WATERLINE	1344.50
1200	TOP OF PROP. 6" WATERLINE	1344.50
1190	TOP OF PROP. 6" WATERLINE	1344.50
1180	TOP OF PROP. 6" WATERLINE	1344.50
1170	TOP OF PROP. 6" WATERLINE	1344.50
1160	TOP OF PROP. 6" WATERLINE	1344.50
1150	TOP OF PROP. 6" WATERLINE	1344.50
1140	TOP OF PROP. 6" WATERLINE	1344.50
1130	TOP OF PROP. 6" WATERLINE	1344.50
1120	TOP OF PROP. 6" WATERLINE	1344.50
1110	TOP OF PROP. 6" WATERLINE	1344.50
1100	TOP OF PROP. 6" WATERLINE	1344.50
1090	TOP OF PROP. 6" WATERLINE	1344.50
1080	TOP OF PROP. 6" WATERLINE	1344.50
1070	TOP OF PROP. 6" WATERLINE	1344.50
1060	TOP OF PROP. 6" WATERLINE	1344.50
1050	TOP OF PROP. 6" WATERLINE	1344.50
1040	TOP OF PROP. 6" WATERLINE	1344.50
1030	TOP OF PROP. 6" WATERLINE	1344.50
1020	TOP OF PROP. 6" WATERLINE	1344.50
1010	TOP OF PROP. 6" WATERLINE	1344.50
1000	TOP OF PROP. 6" WATERLINE	1344.50

NOTE
Underground utilities and structures have been plotted from available information and therefore, their location must be considered approximate only. It is the responsibility of the individual contractors to notify the utility companies before actual construction.

Owner:
Hunting Park Holding LLC 4041 N.
MacArthur Blvd, Suite 350
Newport Beach Ca, 92660

- UTILITY NOTES:**
- ALL FILL MATERIAL IS TO BE IN PLACE AND COMPACTED BEFORE INSTALLATION OF PROPOSED UTILITIES.
 - CONTRACTOR SHALL NOTIFY THE UTILITY AUTHORITIES INSPECTORS 72 HOURS BEFORE CONNECTING TO ANY EXISTING LINE.
 - CONTRACTOR SHALL MAINTAIN A MINIMUM OF 3'-6" COVER ON ALL WATERLINES AND 3'-9" ON ALL SANITARY SEWER LINES.
 - CONTRACTOR SHALL COORDINATE WITH BUILDING ARCHITECT AND TELEPHONE COMPANY FOR EXACT LOCATIONS OF TELEPHONE ENTRY TO THE BUILDING. CONTRACTOR SHALL BE RESPONSIBLE FOR ANY CONDUITS, PULL WIRES, TRENCHING, BACKFILL, ETC. REQUIRED BY TELEPHONE CO.
 - CONNECTION FROM THE METER TO SITE UTILITY LINES SHALL BE MADE BY BUILDING CONTRACTOR.
 - EXISTING UTILITIES SHALL BE VERIFIED IN FIELD PRIOR TO INSTALLATION OF ANY NEW LINES.
 - REFER TO INTERIOR MECHANICAL, ELECTRIC AND PLUMBING DRAWINGS FOR TIE-IN OF ALL UTILITIES.
 - THE CONTRACTOR IS SPECIFICALLY CAUTIONED THAT THE LOCATION AND/OR ELEVATION OF EXISTING UTILITIES AS SHOWN ON THESE PLANS IS BASED ON RECORDS OF THE VARIOUS UTILITY COMPANIES, AND WHERE POSSIBLE, MEASUREMENTS TAKEN IN THE FIELD. THE INFORMATION IS NOT TO BE RELIED ON AS BEING EXACT OR COMPLETE. THE CONTRACTOR MUST CALL THE APPROPRIATE UTILITY COMPANIES AT LEAST 72 HOURS BEFORE ANY EXCAVATION TO REQUEST EXACT FIELD LOCATION OF UTILITIES. IT SHALL BE THE RESPONSIBILITY OF THE CONTRACTOR TO LOCATE ALL EXISTING UTILITIES WHICH CONFLICT WITH THE PROPOSED IMPROVEMENTS SHOWN ON THE PLANS.
 - ALL NECESSARY INSPECTIONS AND/OR CERTIFICATIONS REQUIRED BY CODES AND/OR UTILITY SERVICE COMPANIES SHALL BE PERFORMED PRIOR TO ANNOUNCING BUILDING POSSESSION AND THE FINAL CONNECTION OF SERVICE.
 - CONTRACTOR SHALL COORDINATE WITH BUILDING ARCHITECT AND KANSAS GAS SERVICE FOR EXACT LOCATION OF GAS ENTRY. G.C. TO INCLUDE IN BID FOR CONTRACTOR ANY GAS PIPING, CONDUITS, TRENCHING, BACKFILLING, ETC. REQUIRED BY KANSAS GAS SERVICE.
 - CONTRACTOR SHALL COORDINATE WITH BUILDING ARCHITECT AND ELECTRIC COMPANY FOR EXACT LOCATION OF ELECTRIC ENTRY. G.C. SHALL INCLUDE FOR ANY CONDUITS, TRENCHING, BACKFILLING, CABLES, ETC. REQUIRED BY ELECTRIC COMPANY IN HISHER BID.
 - SEE MEP PLANS FOR GAS SERVICE SIZING.
 - ALL UTILITY SEWER TRENCH BACKFILL SHALL HAVE GRANULAR BACKFILL AND BE MECHANICALLY COMPACTED.
 - THE CONTRACTOR SHALL VERIFY THE LOCATION, CONDITION AND ELEVATION OF ALL PROPOSED SEWER CONNECTION POINTS PRIOR TO THE START OF CONSTRUCTION. ANY DISCREPANCIES THAT WOULD INTERFERE WITH THE PROPOSED SEWER DESIGN SHALL IMMEDIATELY BE BROUGHT TO THE ATTENTION OF THE ENGINEER.
 - THE EXISTING INLETS NOTED ARE TO BE INSPECTED BY CITY OF WICHITA AND A DETERMINATION MADE IF REPLACEMENT IS NEEDED. EXISTING TOP OF STRUCTURES AND ALL FLOWLINES OF STRUCTURES ARE TO BE REPLICATED PER PLANS IF REPLACEMENT IS REQUIRED. CONTRACTOR TO INCLUDE REMOVAL AND REPLACEMENT OF STRUCTURES IN HISHER BID.
 - ALL PERMIT FEES AND COSTS ASSOCIATED WITH BRINGING UTILITY, SEWER AND WATER SERVICES TO THE BUILDING SHALL BE THE RESPONSIBILITY OF THE CONTRACTOR. ALL FEES AND COSTS SHALL BE INCLUDED IN THE CONTRACTOR'S BID.
 - G.C. TO INCLUDE IN HIS BID COST TO BORE UNDER WEST 13TH STREET AND PROVIDE OPENING FOR CITY OF WICHITA WATER SERVICE TO MAKE TAP. G.C. IS ALSO TO PROVIDE TRENCH, BACKFILL AND GRADE SMOOTH FOR A COMPLETE WATER LINE INSTALLATION.
 - G.C. IS TO PROVIDE TRENCH, WIRE, AND CONDUIT FOR TELEPHONE AND ELECTRICAL SERVICES, BACKFILL AND GRADE SMOOTH FOR A COMPLETE TELEPHONE AND ELECTRIC INSTALLATION.
 - THE CONTRACTOR SHALL INCLUDE FOR TELEPHONE INSTALLATION COSTS BY THE LOCAL PHONE COMPANY IN HISHER BID.
 - THE CONTRACTOR SHALL INCLUDE THE COST ESTIMATE PROVIDED BY WESTAR ENERGY IN HISHER BID FOR THE RELOCATION OF ANY OVERHEAD ELECTRIC OR GUY WIRES.

ARCHITECT OF RECORD

NORR
ARCHITECTS ENGINEERS PLANNERS

CONSULTANT:

PREMIER CIVIL ENGINEERING

308 TCW Court
Lake Saint Louis, MO 63367
Phone: (314) 925-7444
Fax: (314) 925-7457

DEVELOPER:

VELMEIR COMPANIES

ENGINEERS AUTHENTICATION
This responsibility for professional engineering liability on this project is hereby limited to the set of plans authorized by the seal, signature, and date hereunder attached. Responsibility is disclaimed for all other engineering plans involved in this project and specifically excludes revisions after this date unless reauthorized.

REVISIONS:

7/17/12 - CREATED WATER PLAN
8/13/12 - REVISED PER CITY COMMENTS, REVS. TO STORM DETENTION HOPE PIPES AT CS-102

DRAWING BY: J.WURM
DATE: 6-1-2012
JOB NUMBER: 113201
TITLE: PRIVATE PROJECT WATER LINE AND HYDRANT PLAN
SHEET NUMBER:
SHEET C-3B

1674 PPW (607853)

CVS pharmacy

NORTHERN 13,225-RIGHT CHAMFER DRIVE-THRU

STORE NUMBER: 10077

SVC 13TH AND MAIZE WICHITA, KS

PROJECT TYPE: NEW CONSTRUCTION

DEAL TYPE: FEE FOR SERVICE

CS PROJECT NUMBER: 64724

NORR
ARCHITECTS ENGINEERS PLANNERS

CONSULTANT:

PREMIER CIVIL ENGINEERING

308 TCW Court
Lake Saint Louis, MO 63367
Phone: (314) 925-7444
Fax: (314) 925-7457

DEVELOPER:

VELMEIR COMPANIES

ENGINEERS AUTHENTICATION
This responsibility for professional engineering liability on this project is hereby limited to the set of plans authorized by the seal, signature, and date hereunder attached. Responsibility is disclaimed for all other engineering plans involved in this project and specifically excludes revisions after this date unless reauthorized.

Professional Engineer
KANSAS
20429
8/15/12

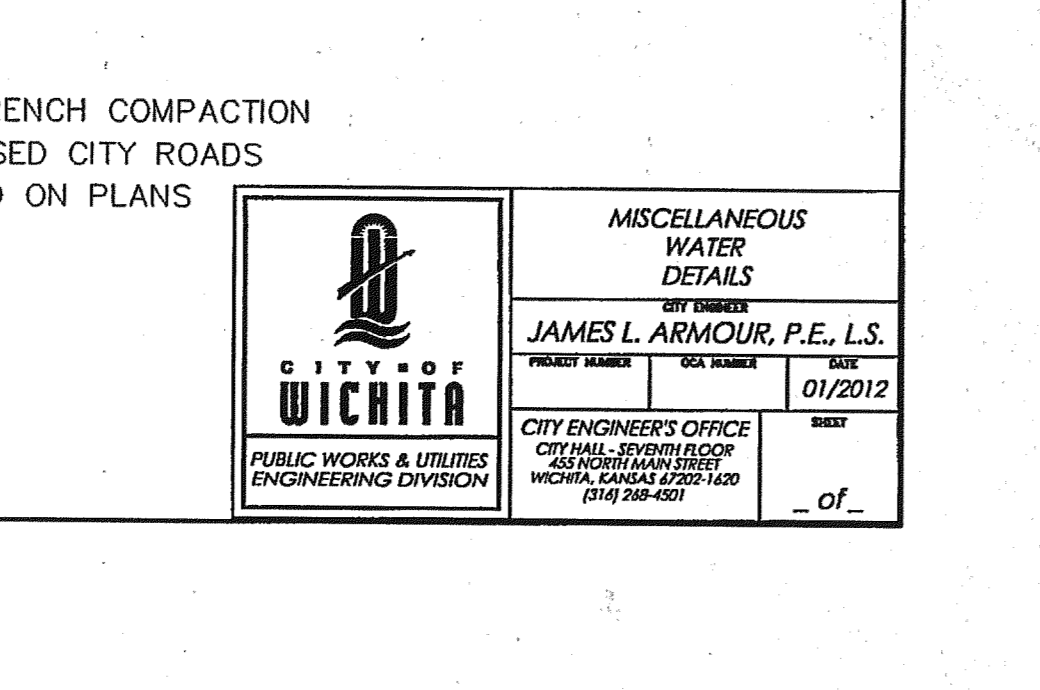
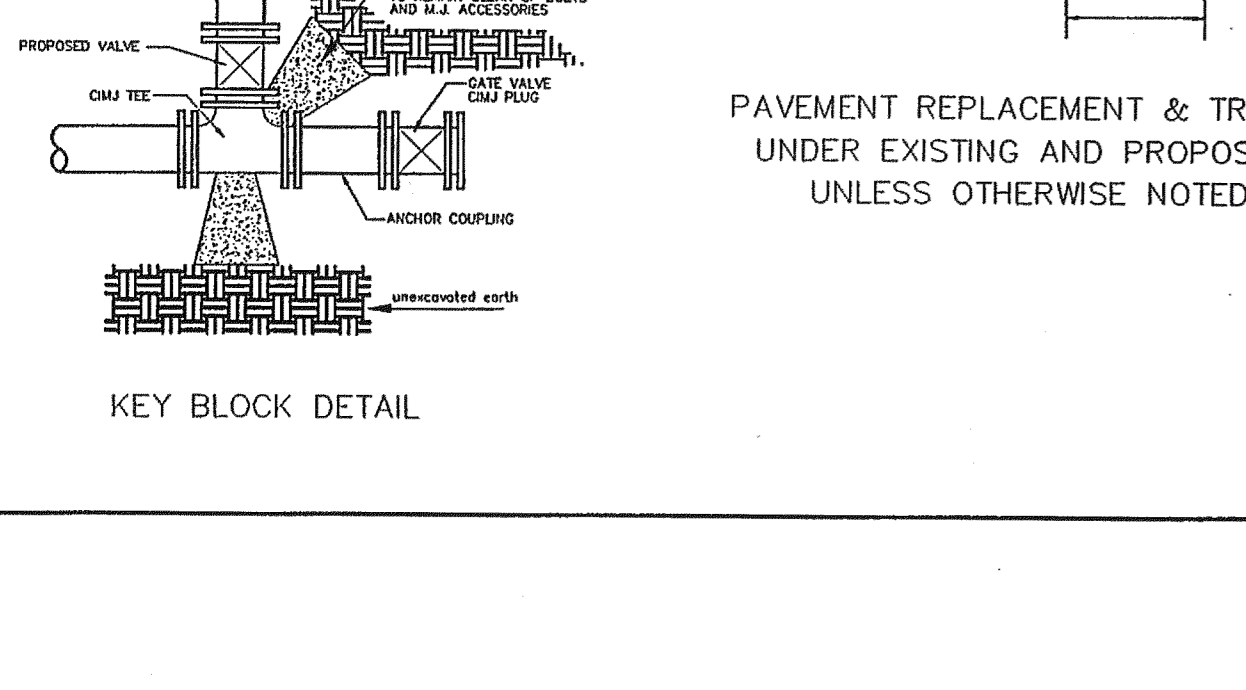
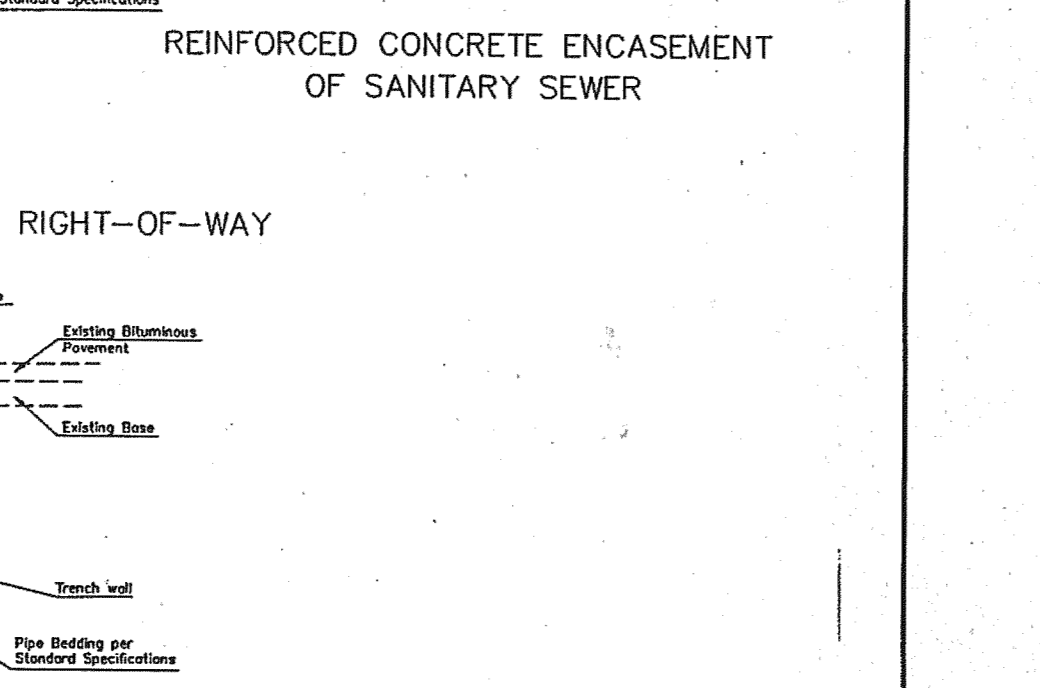
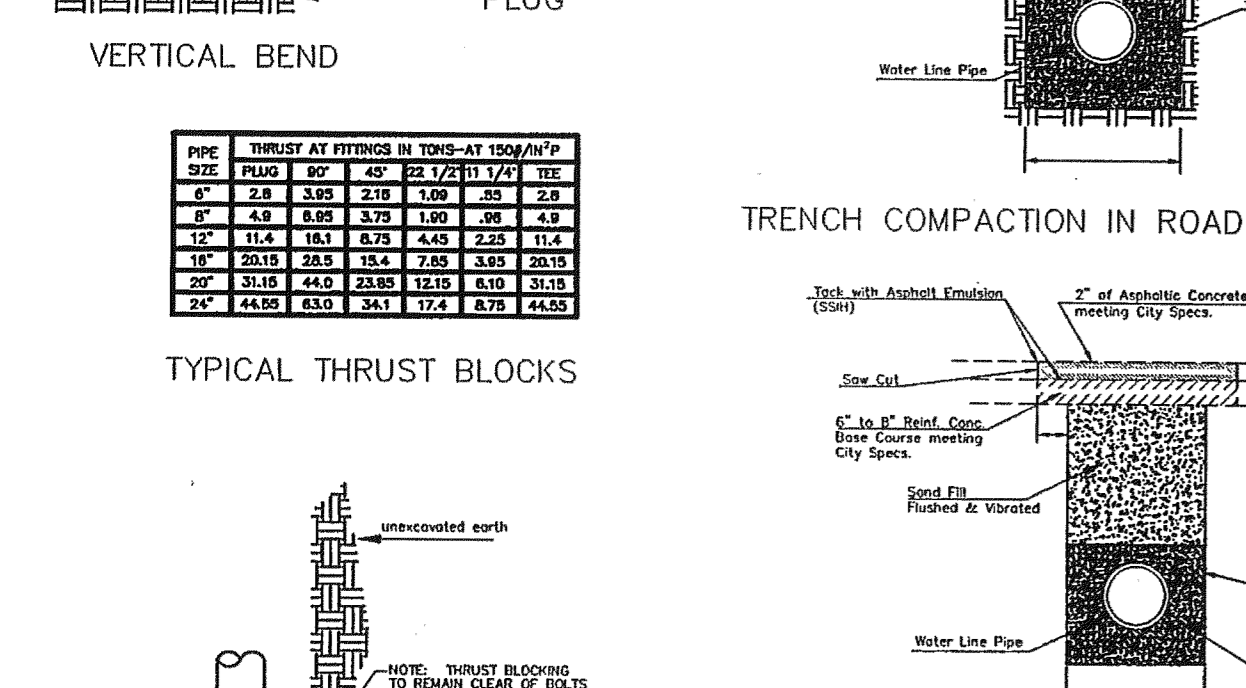
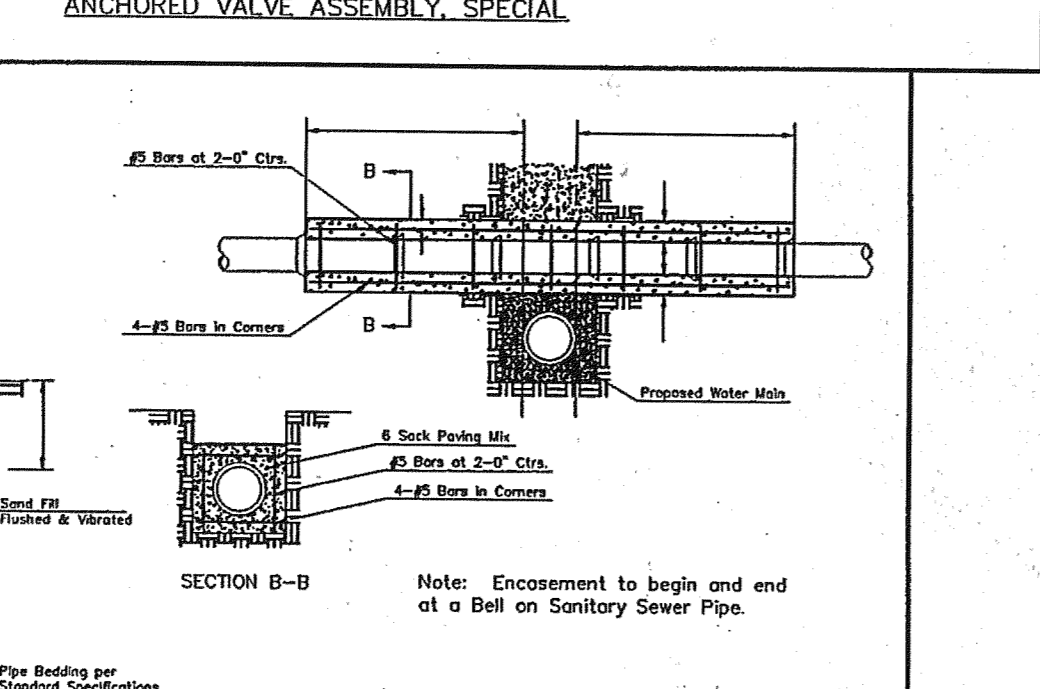
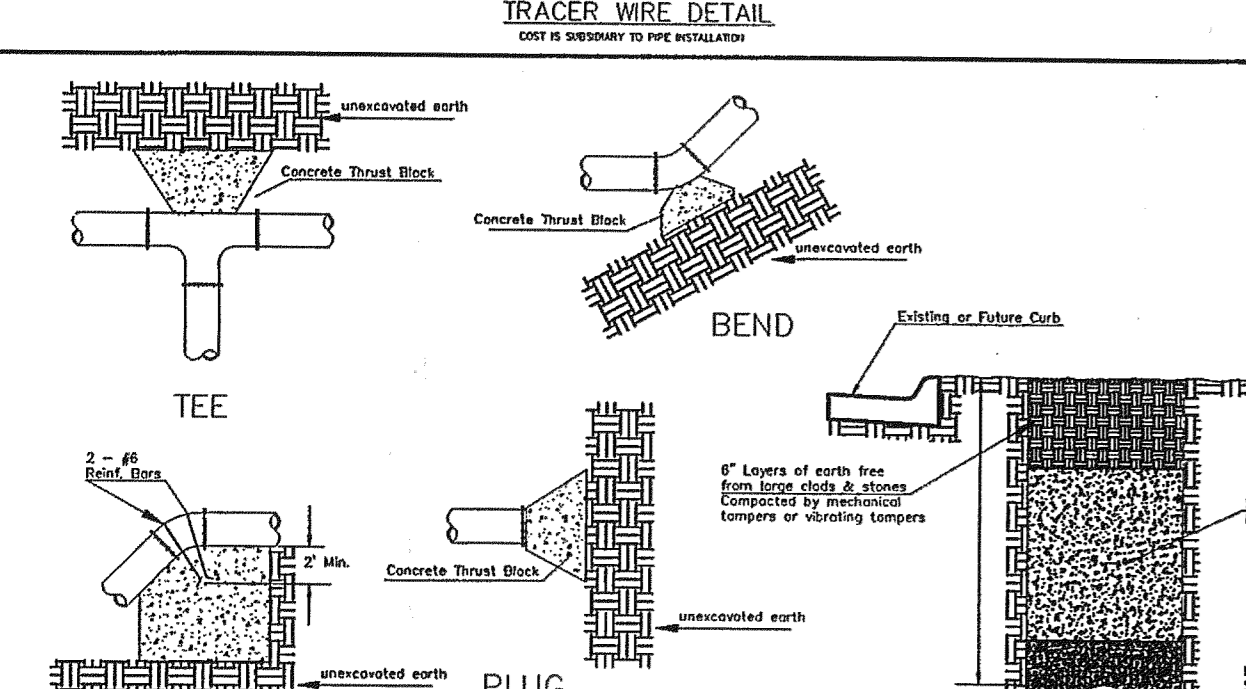
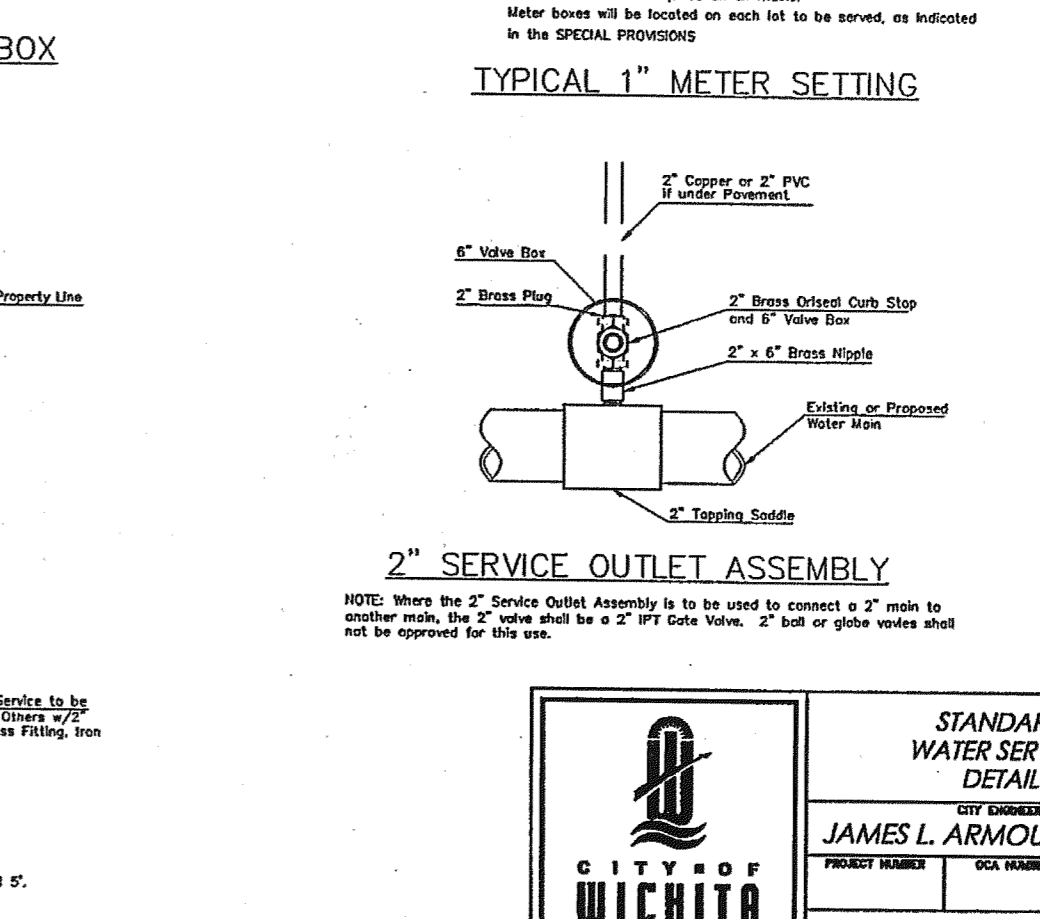
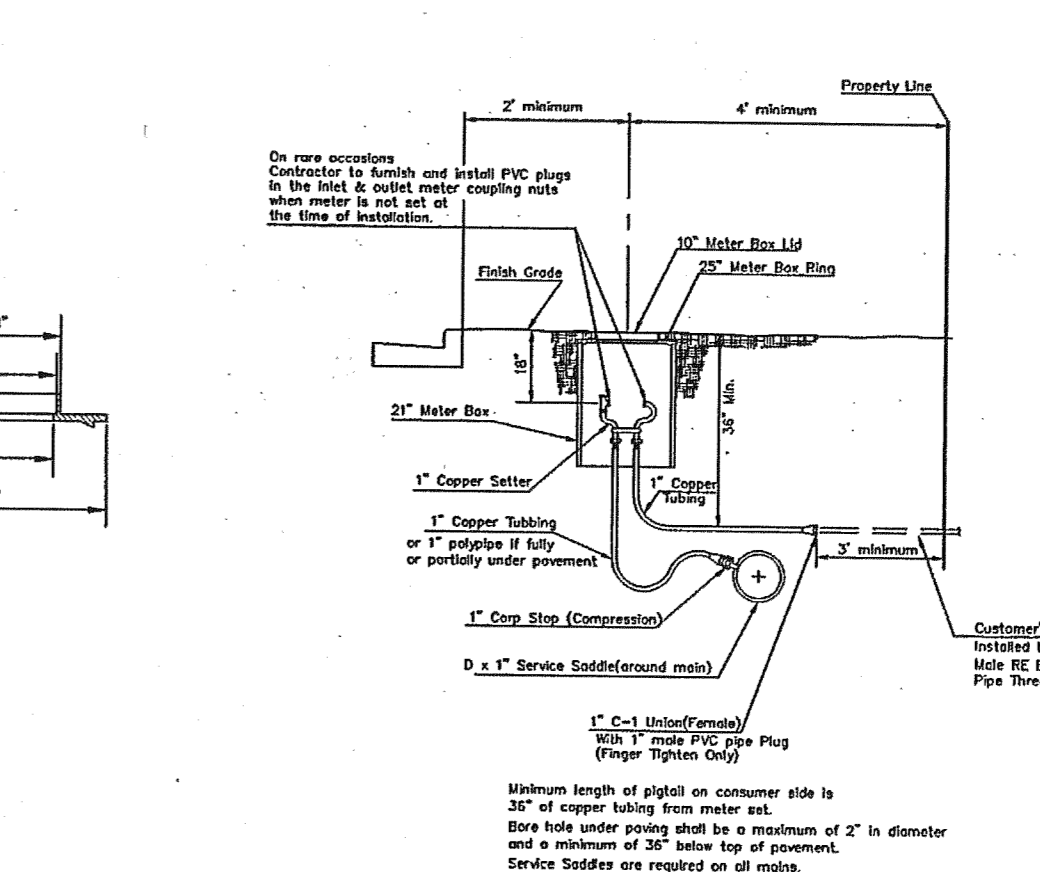
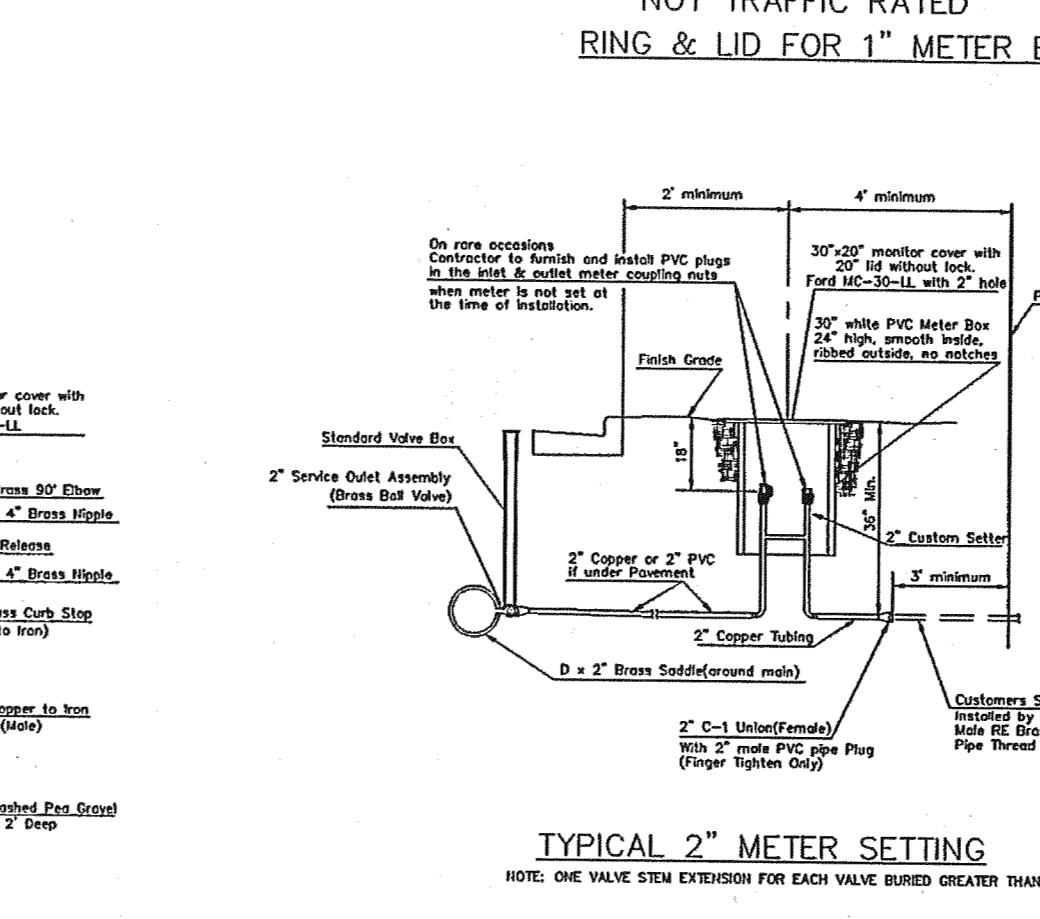
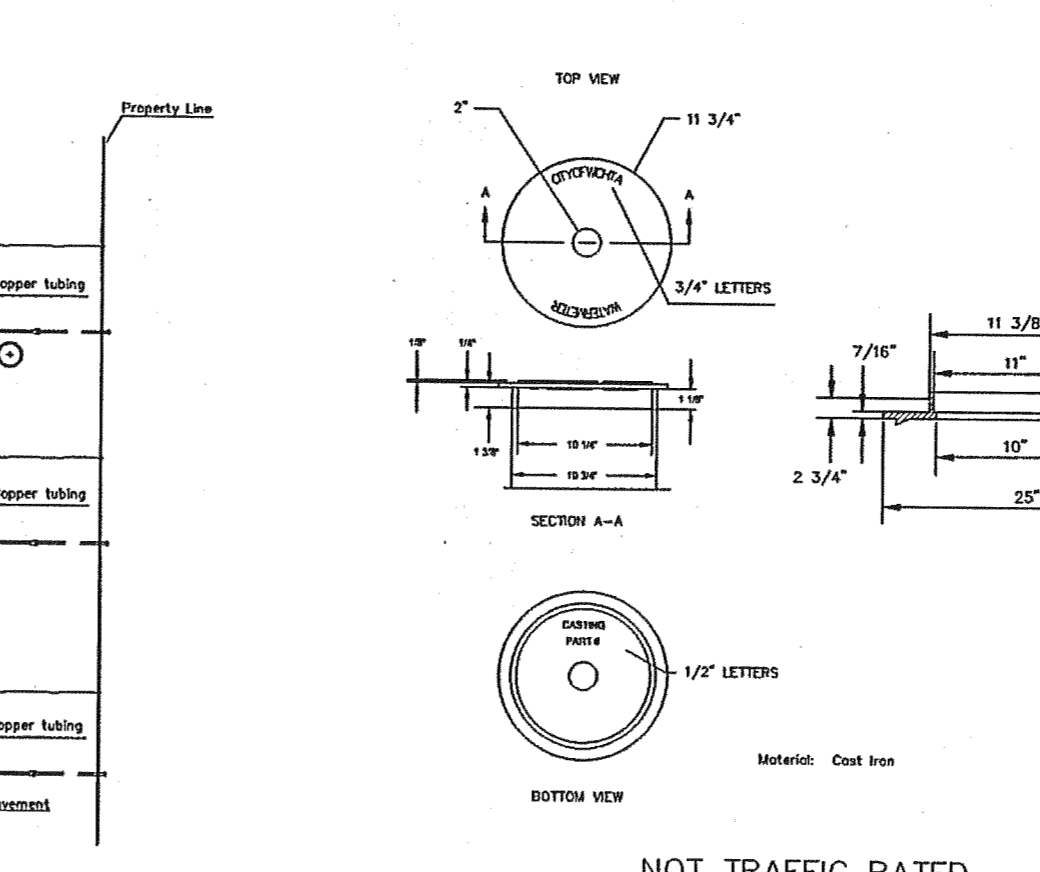
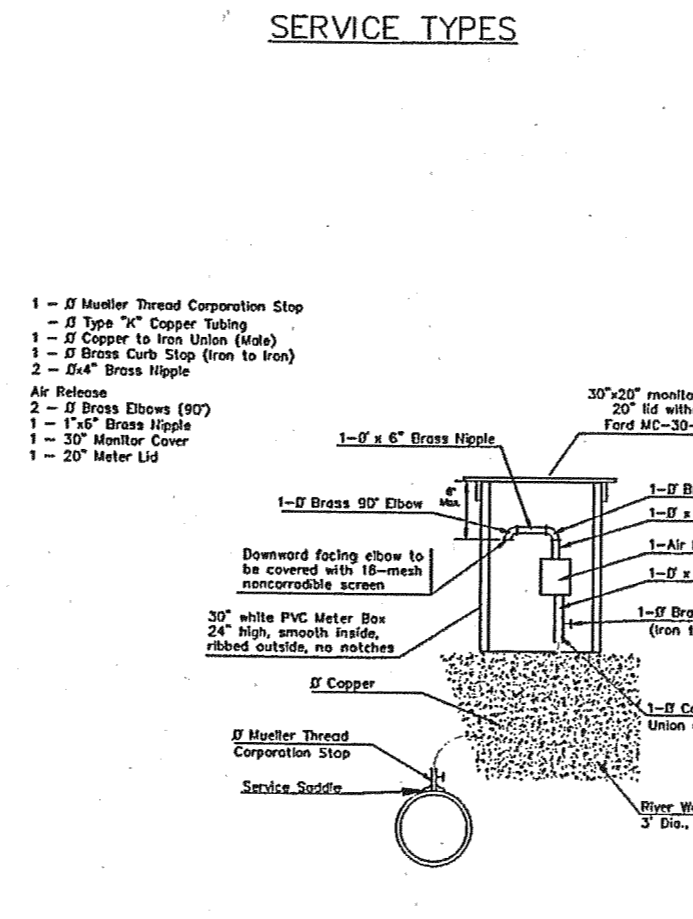
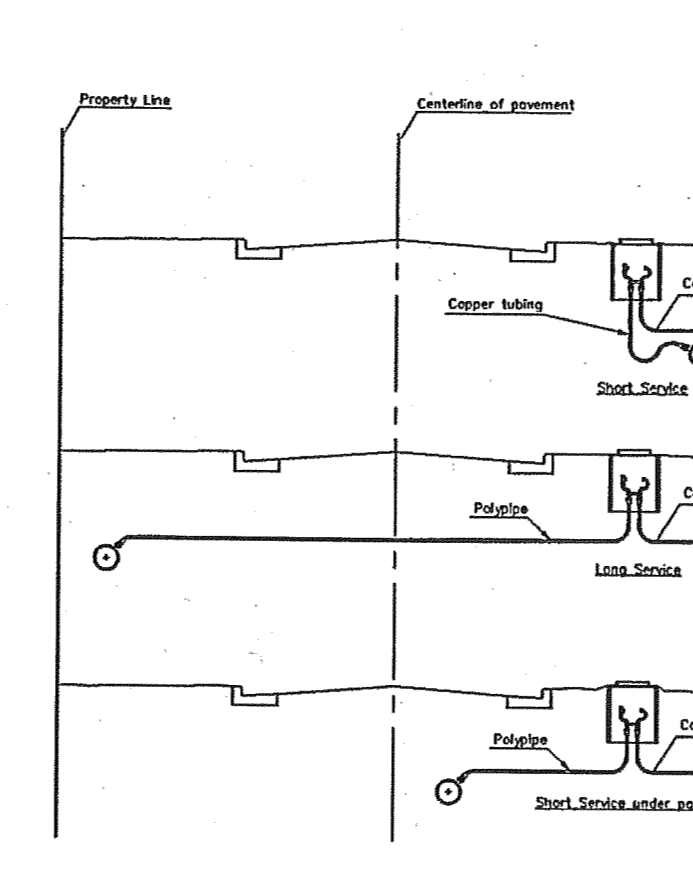
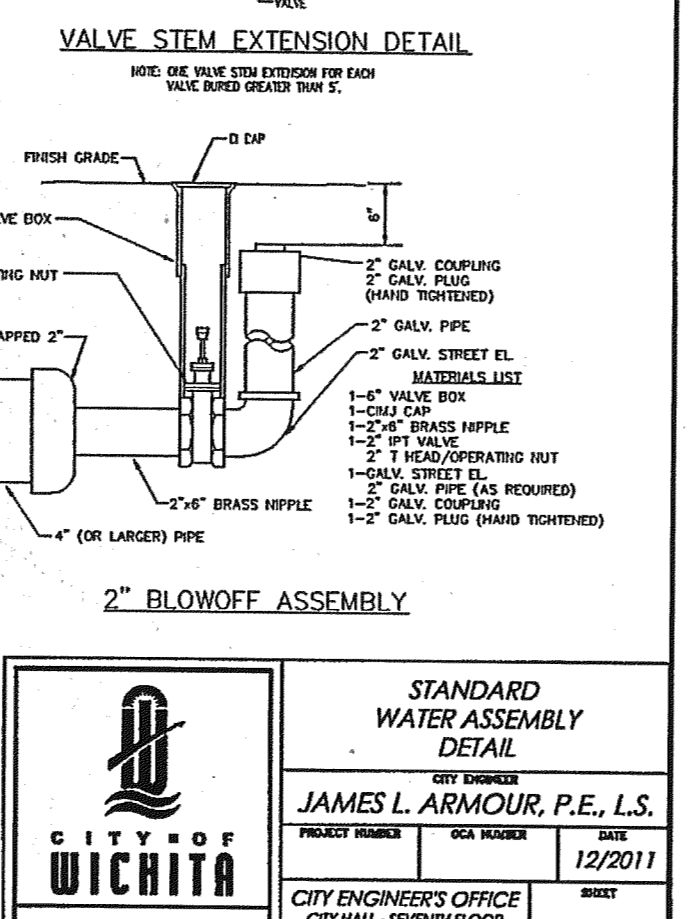
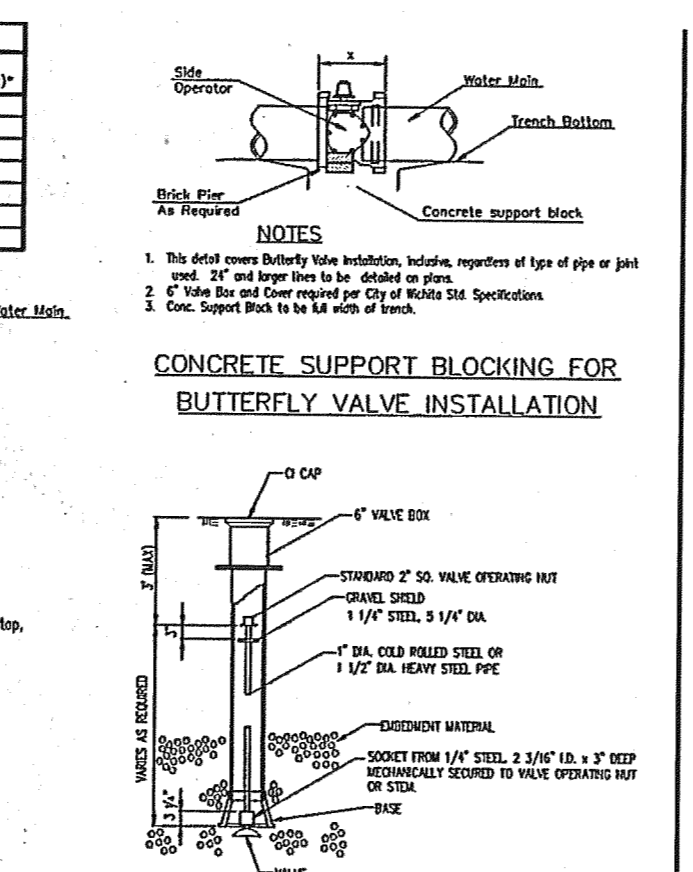
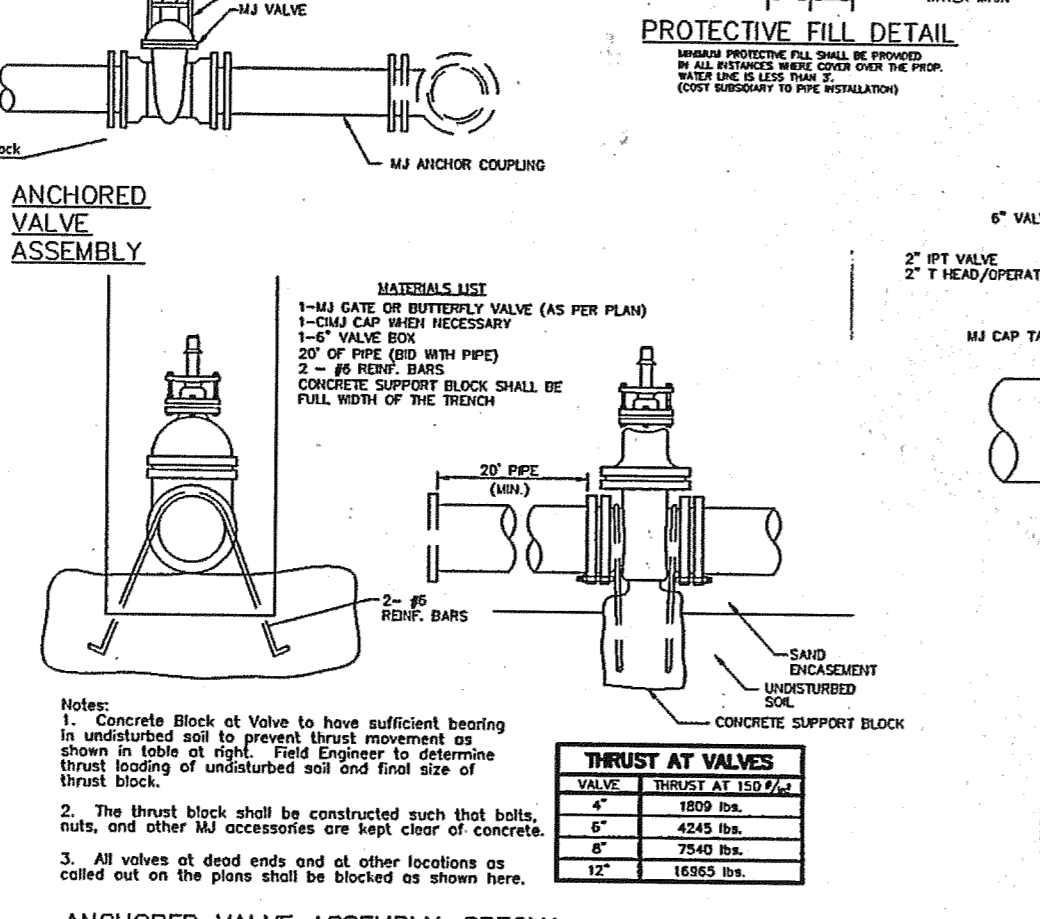
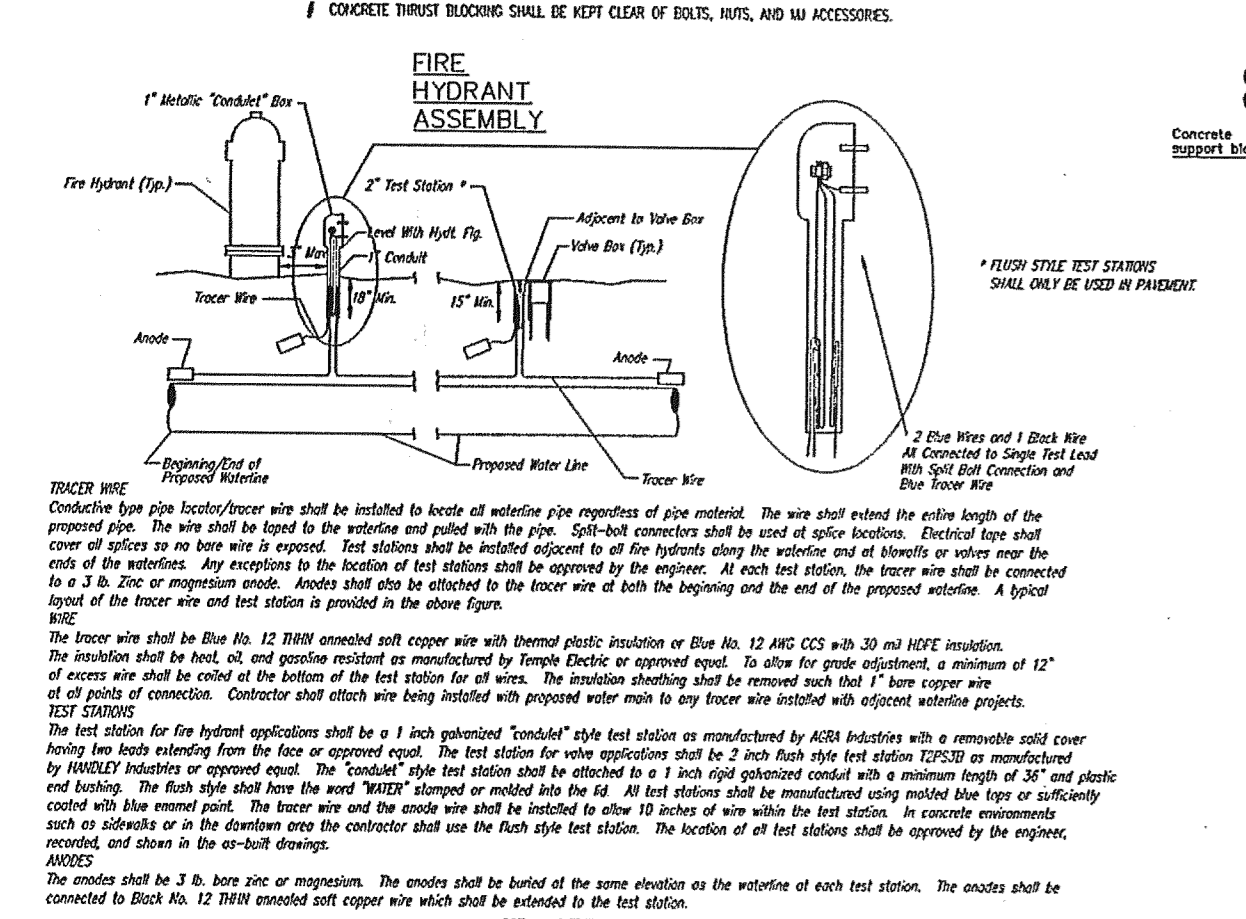
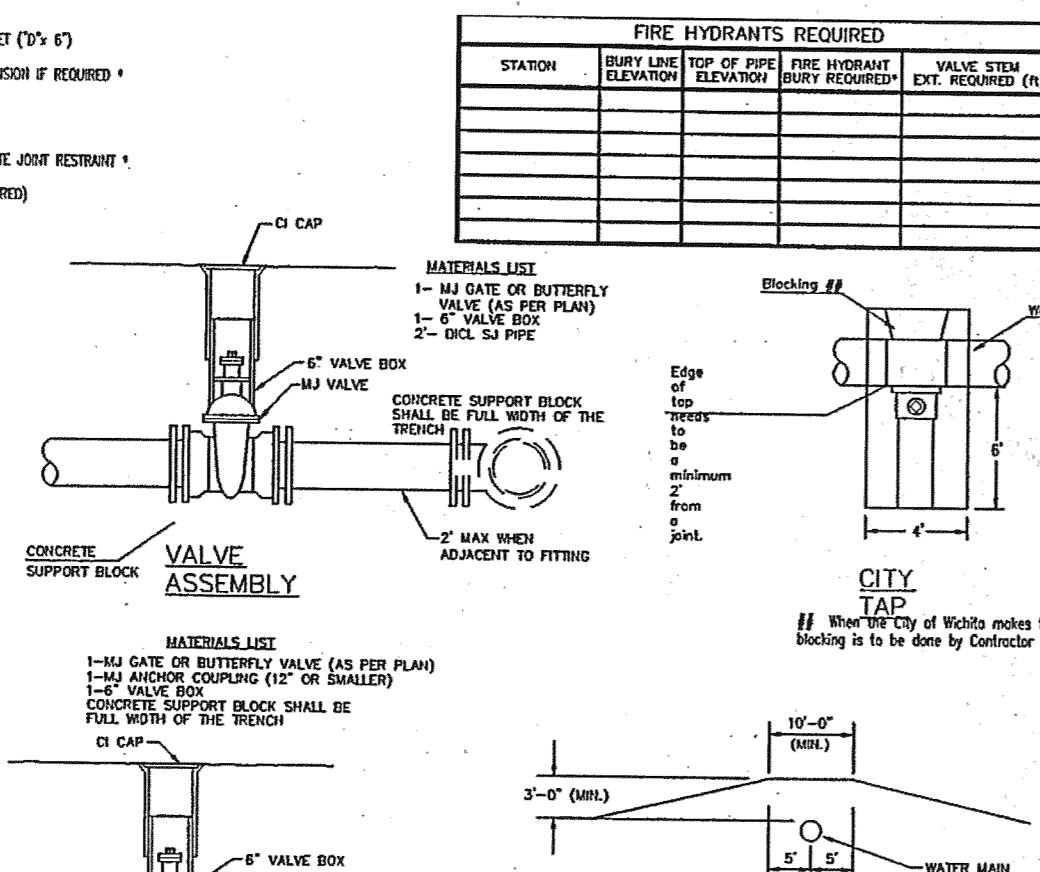
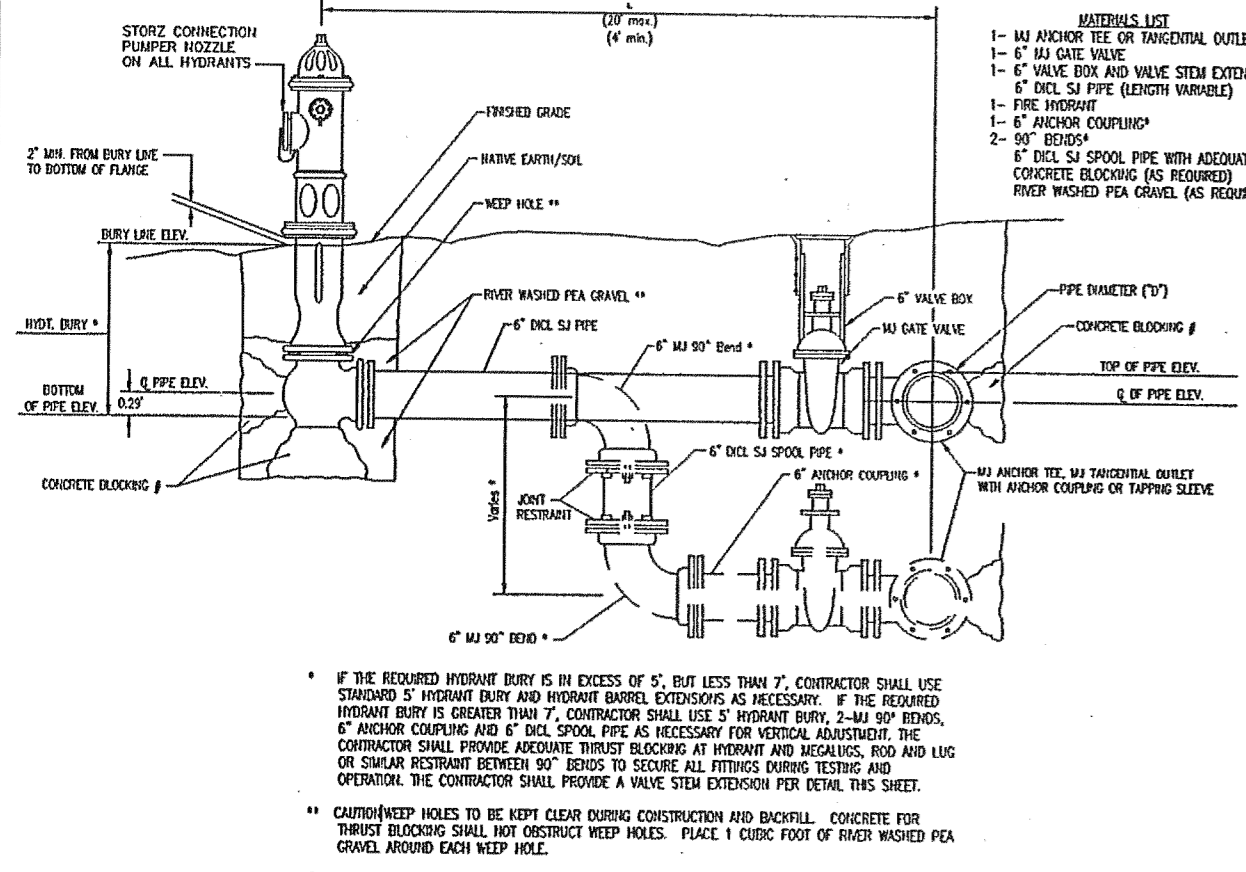
REVISIONS:

7/17/12 - CREATED WATER PLAN
8/13/12 - REVISED PER CITY COMMENTS, REVS. TO STORM DETENTION HOPE PIPES AT CS-102

DRAWING BY: J.WURM
DATE: 6-1-2012
JOB NUMBER: 113201
TITLE: PRIVATE PROJECT WATER LINE AND HYDRANT PLAN
SHEET NUMBER:
SHEET C-3B

COMMENTS:

\\STORAGE1\server\CIVIL_3D\PROJECTS\13201\DWG\CONSTRUCTION DRAWINGS\SWC 13TH AND MAIZE DETAILS.dwg



NOTE

Underground utilities and structures have been plotted from available information and therefore, their location must be considered approximate only. It is the responsibility of the individual contractors to notify the utility companies before actual construction.

CITY OF WICHITA

JAMES L. ARMOUR, P.E., I.S.

CITY ENGINEERS OFFICE

PUBLIC WORKS & UTILITIES ENGINEERING DIVISION

12/2011

CITY OF WICHITA

JAMES L. ARMOUR, P.E., I.S.

CITY ENGINEERS OFFICE

PUBLIC WORKS & UTILITIES ENGINEERING DIVISION

12/2011

CITY OF WICHITA

JAMES L. ARMOUR, P.E., I.S.

CITY ENGINEERS OFFICE

PUBLIC WORKS & UTILITIES ENGINEERING DIVISION

12/2011

CITY OF WICHITA

JAMES L. ARMOUR, P.E., I.S.

CITY ENGINEERS OFFICE

PUBLIC WORKS & UTILITIES ENGINEERING DIVISION

12/2011

CITY OF WICHITA

JAMES L. ARMOUR, P.E., I.S.

CITY ENGINEERS OFFICE

PUBLIC WORKS & UTILITIES ENGINEERING DIVISION

12/2011

CITY OF WICHITA

JAMES L. ARMOUR, P.E., I.S.

CITY ENGINEERS OFFICE

PUBLIC WORKS & UTILITIES ENGINEERING DIVISION

12/2011

CITY OF WICHITA

JAMES L. ARMOUR, P.E., I.S.

CITY ENGINEERS OFFICE

PUBLIC WORKS & UTILITIES ENGINEERING DIVISION

12/2011

CITY OF WICHITA

JAMES L. ARMOUR, P.E., I.S.

CITY ENGINEERS OFFICE

PUBLIC WORKS & UTILITIES ENGINEERING DIVISION

12/2011

CITY OF WICHITA

JAMES L. ARMOUR, P.E., I.S.

CITY ENGINEERS OFFICE

PUBLIC WORKS & UTILITIES ENGINEERING DIVISION

12/2011

CITY OF WICHITA

JAMES L. ARMOUR, P.E., I.S.

CITY ENGINEERS OFFICE

PUBLIC WORKS & UTILITIES ENGINEERING DIVISION

12/2011

CVS pharmacy

NORTHERN 13,225-RIGHT CHAMFER DRIVE-THRU

STORE NUMBER: 10077

SVC W 13TH ST AND MAIZE RD WICHITA, KS

PROJECT TYPE: NEW CONSTRUCTION

DEAL TYPE: Fee for Service/Land/Type B

CS PROJECT NUMBER: 064724

ARCHITECT OF RECORD

NORR

ARCHITECTS ENGINEERS PLANNERS

CONSULTANT:

PREMIER CIVIL ENGINEERING

308 TCW Court
Lake Saint Louis, MO 63367
Phone: (314) 925-7444
Fax: (314) 925-7457

DEVELOPER:

VELMEIR COMPANIES

ENGINEERS AUTHENTICATION

STEVE MEREDITH, P.E.

ENGINEER

20422

REVISIONS:

7/17/12 - MODIFIED PLAN TO MATCH PLAT & ADDRESS CITY COMMENTS, REMOVED VAULT DETAILS

DRAWING BY: M. FOGARTY

DATE: 6-1-2012

JOB NUMBER: 113201

TITLE:

UTILITY DETAIL

SHEET NUMBER:

SHEET C-8.2

COMMENTS: