

SITE 2

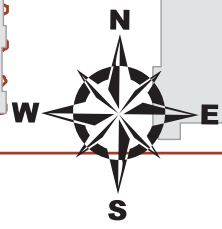
Install 621 lf of 8" Cured-in-Place Liner

MH 5348-003
Approx MH depth = 8.4

MH 5348-197
733 N. Litchfield
Approx MH depth = 7.7 ft

MH 5348-200
Approx MH depth = 5.3 ft

MH 5348-201
Approx MH depth = 5.5 ft



Murdock

374' 12"

376' 12"

1525 W. Murdock

753 N. Litchfield

Faulkner

Porter

Litchfield

311'

205'

105'

316' 8"

1524 W. Pine

Stackman

W MURDOCK AVE

753

1525

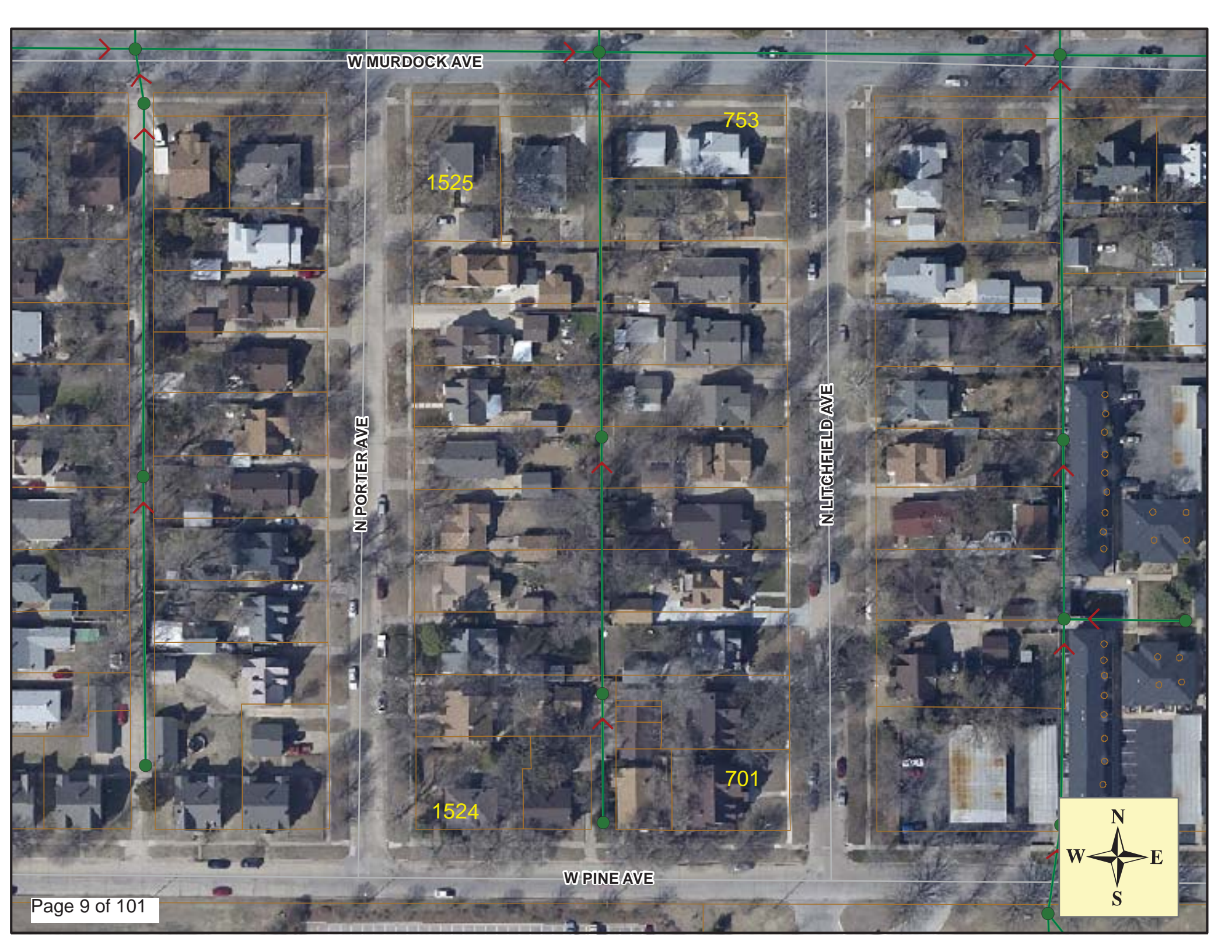
N PORTIER AVE

N LITCHFIELD AVE

701

1524

W PINE AVE





Video Inspection Master Report

7/10/2012
10:12 AM

US Structure: 5348-201
DS Structure: 5348-200

Date Insp: 6/17/2010 Basin: C03E
Dir Televised: Downstream To Upstream

Pipe Information
Dia: 8 Material: VCP Length: 105.0 Slope: 0.400 DVD #0585 Crew: 690

Obs. #	VTR Counter	Distance	Location	Description	Rating	Ratings			
						Obsrvd (gpm)	Est. (gpm)	Struct Clean	Remain (gpm)
1		0.0		5348-200 DS Manhole	1				
2		8.4	Joint	Offset	3	0.010	20	0	0.010
3		10.9	707 N LITCHFIELD	Wye Service	3	0.000	2	0	0.000
4		11.1	Joint	Offset	2	0.000	0	0	0.000
5		13.3	710 N PORTER	Wye Service	3	0.000	2	0	0.000
6		13.5		Crack-Radial	2	0.002	2	0	0.002
7		16.6		Crack-Radial	2	0.002	2	0	0.002
8		18.7		Crack-Radial	3	0.004	5	0	0.004
9		18.7	Joint	Offset	2	0.000	0	0	0.000
10		26.5		Crack-Radial	2	0.002	2	0	0.002
11		29.0		Crack-Radial	2	0.002	2	0	0.002
12		30.2		Crack-Horizontal	2	0.002	2	0	0.002
13		34.4		Crack-Horizontal	2	0.002	2	0	0.002
14		36.4		Wye Service	1	0.000	0	0	0.000
15		38.9		Wye Service	1	0.000	0	0	0.000
16		39.0		Crack-Radial	2	0.002	2	0	0.002
17		39.1	Joint	Offset	3	0.010	20	0	0.010
18		41.5		Roots	2	0.004	2	4	0.004
19		43.6		Crack-Radial	2	0.002	2	0	0.002
20		46.4		Roots	2	0.004	2	4	0.004
21		49.0	Joint	Offset	2	0.000	0	0	0.000
22		50.7	707 N LITCHFIELD / PVC	Break-In Conn	1	0.001	0	0	0.001
23		51.6		Roots	2	0.004	2	4	0.004
24		54.1		Roots	2	0.004	2	4	0.004
25		56.7		Roots	2	0.004	2	4	0.004
26		59.0		Roots	3	0.008	5	8	0.008
27		61.7		Wye Service	2	0.000	0	0	0.000
28		61.8	Joint	Offset	3	0.010	20	0	0.010
29		64.1		Wye Service	1	0.000	0	0	0.000
30		66.7		Roots	2	0.004	2	4	0.004
31		68.8	707 N PORTER / full of roots	Wye Service	3	0.000	2	0	0.000
32		86.9	703 N LITCHFIELD / full of roots	Wye Service	2	0.000	0	0	0.000
33		87.2		Roots	3	0.008	5	8	0.008
34		89.6		Wye Service	1	0.000	0	0	0.000
35		92.1	Joint	Offset	2	0.000	0	0	0.000
36		94.5		Roots	3	0.008	5	8	0.008
37		97.2	Joint	Offset	3	0.010	20	0	0.010
38		99.8	1508 W PINE	Wye Service	1	0.000	0	0	0.000
39		100.0	Joint	Offset	3	0.010	20	0	0.010
40		103.7	1518 N PORTER	Break-In Conn	1	0.001	0	0	0.001
41		104.3		US Manhole 5348-201	3				



Television Inspection Master Report

8/16/2010
2:15 PM

US Structure: 5348-200
DS Structure: 5348-197

733 N LITCHFIELD ST

Date Insp: 6/18/2010
Dir Televised: Upstream To Downstream

Basin: C03E

Pipe Information

Project No. : B-239 Dia/Ht: 8 Material: VCP Length: 205.0 Slope: 0.400

Obs. #	VTR	Counter	Distance	Location	Description	Rating	Obsrvd (gpm)	Est. (gpm)	Ratings		
									Struct	Clean	Remain (gpm)
1			0.0		US Manhole 5348-200	2	0.002	0.002	2	0	0.002
2			0.0		Crack-Radial	2	0.002	0.002	2	0	0.002
3			6.0		Crack-Radial	3	0.004	0.004	5	0	0.004
4			7.4		Broken Pipe	2	0.008	0.008	44	0	0.008
5			10.2		Crack-Radial	2	0.002	0.002	2	0	0.002
6			11.4		Wye Service	1	0.000	0.000	0	0	0.000
7			12.4		Crack-Radial	2	0.002	0.002	2	0	0.002
8			14.1		Wye Service	1	0.000	0.000	0	0	0.000
9			14.9		Crack-Radial	2	0.002	0.002	2	0	0.002
10			17.4		Crack-Radial	3	0.004	0.004	5	0	0.004
11			20.0		Crack-Radial	2	0.002	0.002	2	0	0.002
12			27.8		Crack-Radial	2	0.002	0.002	2	0	0.002
13			30.0		Crack-Radial	2	0.002	0.002	2	0	0.002
14			30.5		Crack-Radial	2	0.002	0.002	2	0	0.002
15			32.8		Crack-Radial	2	0.002	0.002	2	0	0.002
16			35.9		Broken Pipe	2	0.008	0.008	44	0	0.008
17			37.0		Wye Service	1	0.000	0.000	0	0	0.000
18			38.6	719 N LITCHFIELD	Break-In Conn	2	0.002	0.002	0	0	0.002
19			40.3		Crack-Radial	2	0.002	0.002	2	0	0.002
20			40.3		Crack-Horizontal	2	0.002	0.002	2	0	0.002
21			48.2		Crack-Radial	2	0.002	0.002	2	0	0.002
22			50.9		Crack-Radial	2	0.002	0.002	2	0	0.002
23			53.0		Crack-Horizontal	2	0.002	0.002	2	0	0.002
24			53.6		Broken Pipe	2	0.008	0.008	44	0	0.008
25			55.7		Crack-Radial	3	0.004	0.004	5	0	0.004
26			58.2		Crack-Radial	2	0.002	0.002	2	0	0.002
27			61.6	712 N PORTER / heavy roots inside	Wye Service	2	0.000	0.000	0	0	0.000
28			63.8		Broken Pipe	2	0.008	0.008	44	0	0.008
29			64.9		Wye Service	1	0.000	0.000	0	0	0.000
30			71.3		Crack-Radial	2	0.002	0.002	2	0	0.002
31			76.2		Crack-Radial	2	0.002	0.002	2	0	0.002
32			78.8		Crack-Radial	2	0.002	0.002	2	0	0.002
33			81.5		Crack-Horizontal	2	0.002	0.002	2	0	0.002
34			86.5		Crack-Radial	3	0.004	0.004	5	0	0.004
35			87.1	714 N PORTER	Wye Service	2	0.000	0.000	0	0	0.000
36			88.7		Crack-Horizontal	2	0.002	0.002	2	0	0.002
37			89.2		Broken Pipe	4	0.030	0.030	78	0	0.030
38			89.5	721 N LITCHFIELD	Break-In Conn	3	0.004	0.004	2	0	0.004
39			91.4		Crack-Radial	3	0.004	0.004	5	0	0.004
40			93.9		Broken Pipe / invert	5	0.060	0.060	100	0	0.060



Television Inspection Master Report

8/16/2010
2:15 PM

US Structure:	5348-200	1508 W PINE ST	Date Insp:	6/18/2010	Basin:	C03E		
DS Structure:	5348-197	733 N LITCHFIELD ST	Dir Televised:	Upstream To Downstream				
41	94.1		Broken Pipe	4	0.030	78	0	0.030
42	96.4		Crack-Radial	3	0.004	5	0	0.004
43	99.2		Crack-Radial	3	0.004	5	0	0.004
44	102.0		Observation Hole	1	0.000	0	0	0.000
45	103.8		Crack-Radial	2	0.002	2	0	0.002
46	106.8		Crack-Radial	2	0.002	2	0	0.002
47	113.1		Wye Service	1	0.000	0	0	0.000
48	115.8		Wye Service	1	0.000	0	0	0.000
49	116.9		Crack-Radial	2	0.002	2	0	0.002
50	119.2		Crack-Radial	3	0.004	5	0	0.004
51	121.8		Crack-Radial	2	0.002	2	0	0.002
52	124.3		Crack-Radial	3	0.004	5	0	0.004
53	127.2		Crack-Radial	2	0.002	2	0	0.002
54	132.2		Crack-Radial	2	0.002	2	0	0.002
55	134.6		Crack-Radial	2	0.002	2	0	0.002
56	137.5		Crack-Radial	2	0.002	2	0	0.002
57	138.0	724 N PORTER / PVC	Break-In Conn	1	0.001	0	0	0.001
58	139.4		Crack-Horizontal	2	0.002	2	0	0.002
59	141.1		Wye Service	1	0.000	0	0	0.000
60	142.4	725 N LITCHFIELD	Break-In Conn	4	0.008	60	0	0.008
61	144.8		Crack-Radial	2	0.002	2	0	0.002
62	147.3		Broken Pipe	2	0.008	44	0	0.008
63	149.6		Crack-Radial	2	0.002	2	0	0.002
64	152.7		Crack-Radial	3	0.004	5	0	0.004
65	155.0		Crack-Radial	3	0.004	5	0	0.004
66	160.2		Broken Pipe	3	0.010	60	0	0.010
67	160.2		Crack-Horizontal	3	0.004	5	0	0.004
68	162.7		Crack-Horizontal	2	0.002	2	0	0.002
69	164.1		Wye Service	1	0.000	0	0	0.000
70	165.4		Crack-Horizontal	2	0.002	2	0	0.002
71	166.6		Wye Service	1	0.000	0	0	0.000
72	167.6		Crack-Radial	3	0.004	5	0	0.004
73	170.5		Broken Pipe	3	0.010	60	0	0.010
74	170.6		Crack-Radial	2	0.002	2	0	0.002
75	173.1		Crack-Radial	2	0.002	2	0	0.002
76	177.9		Crack-Radial	2	0.002	2	0	0.002
77	183.1		Crack-Radial	2	0.002	2	0	0.002
79	189.6		Wye Service	1	0.000	0	0	0.000
80	190.9		Broken Pipe	5	0.060	100	0	0.060
78	187.9		Crack-Horizontal	2	0.002	2	0	0.002
81	191.2	730 N PORTER	Break-In Conn	4	0.008	60	0	0.008
82	193.0		Broken Pipe	3	0.010	60	0	0.010
83	195.2		Crack-Radial	2	0.002	2	0	0.002
84	200.4		Crack-Radial	2	0.002	2	0	0.002
85	205.2		5348-197 DS Manhole	3				

Comments: DID NOT FIND A CONNECTION FOR 733 N LITCHFIELD



Television Inspection Master Report

8/16/2010
2:16 PM

US Structure: 5348-197
DS Structure: 5348-003

733 N LITCHFIELD ST

Date Insp: 6/17/2010
Dir Televised: Upstream To Downstream

Basin: C03E

Pipe Information

Project No. : B-239 Dia/Ht: 8 Material: VCP Length: 307.0 Slope: 0.400 Tape ID: DVD #0585

Obs. #	VTR Counter	Distance	Location	Description	Rating	Obsrvd (gpm)	Est. (gpm)	Ratings		
								Struct	Clean	Remain (gpm)
1		0.0		5348-197 US Manhole	1					
2		0.5		Crack-Radial	2	0.002	0.002	2	0	0.002
3		3.0		Crack-Radial	2	0.002	0.002	2	0	0.002
4		5.3		Crack-Radial	4	0.008	0.008	10	0	0.008
5		8.1		Crack-Radial	2	0.002	0.002	2	0	0.002
6		9.5		Wye Service	1	0.000	0.000	0	0	0.000
7		10.3		Crack-Radial	2	0.002	0.002	2	0	0.002
8		11.7		Wye Service	1	0.000	0.000	0	0	0.000
9		16.0		Crack-Radial	2	0.002	0.002	2	0	0.002
10		17.9		Crack-Horizontal	2	0.002	0.002	2	0	0.002
11		32.6	E	Break-In Conn	3	0.004	0.004	2	0	0.004
735 N LITCHFIELD / protruding slightly / rough & jagged edges on tap / roots										
12		34.1		Crack-Radial	2	0.002	0.002	2	0	0.002
13		34.4	W	Break-In Conn	1	0.001	0.001	0	0	0.001
732 N PORTER / PVC										
14		36.0		Crack-Radial	2	0.002	0.002	2	0	0.002
15		37.4		Wye Service	1	0.000	0.000	0	0	0.000
16		38.9		Broken Pipe	2	0.008	0.008	44	0	0.008
17		41.3		Crack-Radial	2	0.002	0.002	2	0	0.002
18		46.3		Crack-Radial	2	0.002	0.002	2	0	0.002
19		49.1		Crack-Radial	2	0.002	0.002	2	0	0.002
20		51.4		Crack-Radial	2	0.002	0.002	2	0	0.002
21		53.8		Crack-Radial	3	0.004	0.004	5	0	0.004
22		56.3		Crack-Radial	2	0.002	0.002	2	0	0.002
23		58.4		Roots	2	0.004	0.004	2	4	0.004
24		58.7	Joint	Offset	2	0.000	0.000	0	0	0.000
25		59.3	W	Break-In Conn	3	0.004	0.004	2	0	0.004
736 N PORTER										
26		61.4		Crack-Radial	2	0.002	0.002	2	0	0.002
27		62.7		Wye Service	1	0.000	0.000	0	0	0.000
28		63.9		Crack-Radial	2	0.002	0.002	2	0	0.002
29		74.1		Crack-Radial	2	0.002	0.002	2	0	0.002
30		76.4		Crack-Radial	2	0.002	0.002	2	0	0.002
31		78.8		Broken Pipe	2	0.008	0.008	44	0	0.008
32		79.3		Broken Pipe	3	0.010	0.010	60	0	0.010
33		79.5		Broken Pipe	3	0.010	0.010	60	0	0.010
34		85.6		Wye Service	1	0.000	0.000	0	0	0.000
35		86.6		Crack-Radial	2	0.002	0.002	2	0	0.002
36		87.4	E / 739 N LITCHFIELD	Wye Service	3	0.000	0.000	2	0	0.000



Wichita Water Utilities — Connect With Us!

Television Inspection Master Report

8/16/2010
2:16 PM

US Structure:	5348-197	733 N LITCHFIELD ST	Date Insp:	6/17/2010	Basin:	C03E
DS Structure:	5348-003		Dir Televised:	Upstream To Downstream		
37	89.3		Crack-Radial	2	0	0.002
38	101.8		Crack-Radial	2	0	0.002
39	102.2		Observation Hole	1	0	0.000
40	104.1		Crack-Horizontal	2	0	0.002
41	110.0	736 N PORTER / PVC	Break-In Conn	2	0	0.002
42	113.1		Wye Service	1	0	0.000
43	114.0		Crack-Radial	3	0	0.004
44	119.6		Crack-Radial	2	0	0.002
45	121.8		Crack-Radial	2	0	0.002
46	127.3		Crack-Radial	2	0	0.002
47	129.5		Crack-Radial	2	0	0.002
48	132.2		Crack-Radial	2	0	0.002
49	134.5		Crack-Radial	2	0	0.002
50	136.2		Wye Service	1	0	0.000
51	136.8		Crack-Horizontal	3	0	0.004
52	137.4		Crack-Horizontal	2	0	0.002
53	138.5 E		Wye Service	5	400	0.000
745 N LITCHFIELD / broken off of main / cavity / roots / must repair						
54	139.6		Crack-Radial	2	2	0.002
55	142.0		Crack-Radial	3	5	0.004
56	142.1		Crack-Radial	2	2	0.002
57	144.6		Crack-Radial	1	1	0.001
58	147.3		Broken Pipe	2	44	0.008
59	148.4	740 N PORTER	Break-In Conn	3	2	0.004
60	149.7		Crack-Radial	2	2	0.002
61	151.9	Crown / pipe hit and patched	Broken Pipe	5	100	0.060
62	161.3		Wye Service	1	0	0.000
63	163.8		Wye Service	1	0	0.000
64	164.9		Crack-Radial	2	0	0.002
65	167.5		Crack-Radial	2	2	0.002
66	170.2		Crack-Radial	2	0	0.002
67	175.3		Crack-Radial	3	5	0.004
68	182.9		Crack-Radial	2	0	0.002
69	185.5		Crack-Radial	2	0	0.002
70	186.6		Wye Service	1	0	0.000
71	187.4		Roots	3	5	0.008
72	188.3	749 N LITCHFIELD	Wye Service	2	0	0.000
73	189.5		Crack-Horizontal	2	2	0.002
74	190.1		Crack-Radial	2	0	0.002
75	200.2		Crack-Horizontal	2	0	0.002
76	201.1	W	Break-In Conn	3	2	0.004
1525 W MURDOCK / tap breaking away from the main						
77	202.7		Crack-Horizontal	2	0	0.002
78	203.1		Observation Hole	2	0	0.002

CAMERA STOPPED / COUNTER RESET TO ZERO / SEE NEXT PAGE FOR CONTINUATION



Television Inspection Master Report

8/16/2010

2:16 PM

US Structure: 5348-197
DS Structure: 5348-003

733 N LITCHFIELD ST

Date Insp: 6/17/2010
Dir. Televised: Upstream to Downstream

Basin:

C03E

CAMERA STOPPED AT 203.1 FEET ON PREVIOUS PAGE / COUNTER RESET TO ZERO

THIS IS THE CONTINUATION TO COMPLETE THE TELEVISION OF THE LINE

Obs. #	VTR Counter	Distance	Location	Description	Rating	Ratings				
						Obsrvd (gpm)	Est. (gpm)	Struct Clean	Remain (gpm)	
1		0.0	Observation Hole	(at 203.1 feet downstream of MH 5348-197)						
2		2.0		Crack-Radial	2	0.002	0.002	2	0	0.002
3		8.5		Wye Service	1	0.000	0.000	0	0	0.000
4		9.9		Crack-Radial	2	0.002	0.002	2	0	0.002
5		10.9		Wye Service	1	0.000	0.000	0	0	0.000
6		17.0		Crack-Radial	2	0.002	0.002	2	0	0.002
7		22.3		Crack-Radial	2	0.002	0.002	2	0	0.002
8		27.1		Crack-Radial	2	0.002	0.002	2	0	0.002
9		33.6		Wye Service	1	0.000	0.000	0	0	0.000
10		35.2	753 N LITCHFIELD / roots	Wye Service	2	0.000	0.000	0	0	0.000
11		37.0		Roots	2	0.004	0.004	2	4	0.004
12		39.5		Crack-Radial	2	0.002	0.002	2	0	0.002
13		42.0	Joint	Offset	2	0.000	0.000	0	0	0.000
14		44.5		Roots	2	0.004	0.004	2	4	0.004
15		45.0		Crack-Radial	2	0.002	0.002	2	0	0.002
16		46.1		Crack-Horizontal	2	0.002	0.002	2	0	0.002
17		47.1		Crack-Horizontal	2	0.002	0.002	2	0	0.002
18		47.5		Crack-Horizontal	2	0.002	0.002	2	0	0.002
19		48.0		Broken Pipe	4	0.030	0.030	78	0	0.030
20		49.9		Crack-Radial	2	0.002	0.002	2	0	0.002
21		54.6		Roots	2	0.004	0.004	2	4	0.004
22		57.1		Roots	2	0.004	0.004	2	4	0.004
23		58.7		Wye Service	1	0.000	0.000	0	0	0.000
24		59.5		Roots	2	0.004	0.004	2	4	0.004
25		60.1		Crack-Radial	2	0.002	0.002	2	0	0.002
26		61.1		Wye Service	1	0.000	0.000	0	0	0.000
27		62.5		Crack-Radial	2	0.002	0.002	2	0	0.002
28		64.6		Roots	2	0.004	0.004	2	4	0.004
29		65.0		Crack-Radial	2	0.002	0.002	2	0	0.002
30		67.1		Roots	2	0.004	0.004	2	4	0.004
31		67.6		Crack-Radial	2	0.002	0.002	2	0	0.002
32		72.9		Crack-Horizontal	2	0.002	0.002	2	0	0.002
33		74.8		Roots	2	0.004	0.004	2	4	0.004
34		77.3		Roots	2	0.004	0.004	2	4	0.004
35		77.6		Crack-Radial	2	0.002	0.002	2	0	0.002
36		82.7		Roots	2	0.004	0.004	2	4	0.004
37		85.6		Crack-Radial	2	0.002	0.002	2	0	0.002
38		90.6		Crack-Radial	2	0.002	0.002	2	0	0.002
39		93.2		Crack-Horizontal	2	0.002	0.002	2	0	0.002
40		95.7		Crack-Radial	2	0.002	0.002	2	0	0.002
41		97.9		Crack-Radial	3	0.004	0.004	5	0	0.004
42		103.8		5348-003 DS Manhole	3					