

Sims Park
Golf Course

328' VCP/CIPP

300' P.V.C.

Briggs

MH 5348-024
Approx. MH depth = 5.9 ft

MH 5348-070
Approx. MH depth = 5.7 ft

Install 293 lf of 8"
Cured-in-Place Liner

Install 298 lf of 8"
Cured-in-Place Liner

MH 5348-021
Approx. MH depth = 4.2 ft

MH 5348-067
Approx. MH depth = 5.9 ft

293'

298'

Amidon

Perry

Coolidge

306' VCP/CIPP

299' VCP/CIPP

Harrison

1056

1057

1056

1057

1047

1018

1017

1018

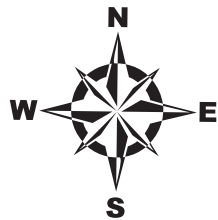
1017

1002

1001

956

957



SITE 4

N AMIDON AVE

W BRIGGS AVE

N PERRY AVE

N COOLIDGE AVE

1057

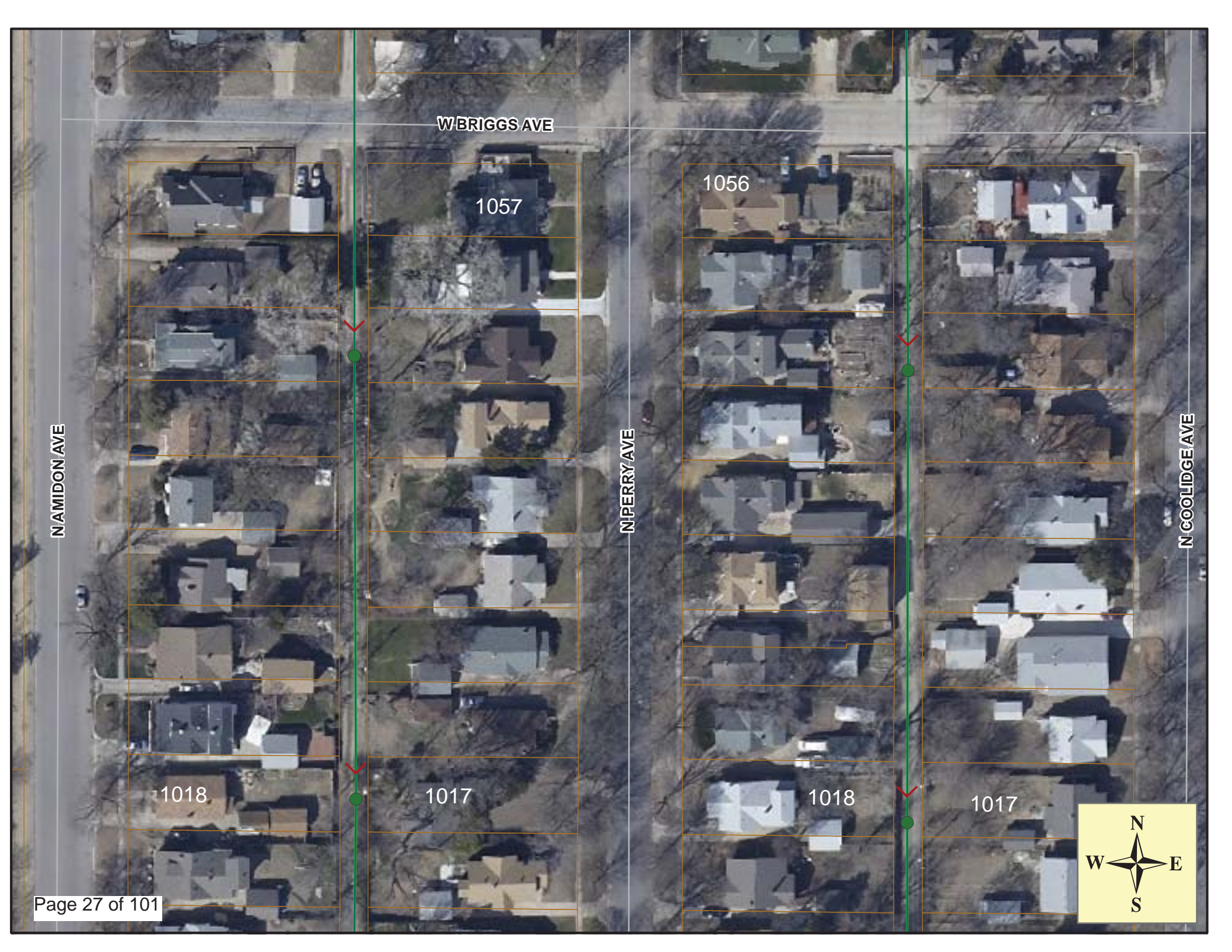
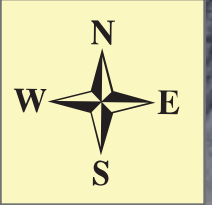
1056

1018

1017

1018

1017



Video Inspection Master Report

7/5/2012
12:59 PM

US Structure: **5348-024** 1046 N AMIDON AVE Date Insp: 6/4/2010 Basin: **C03E**
 DS Structure: **5348-021** 1018 N AMIDON AVE Dir Televised: Upstream To Downstream

Pipe Information

Dia/Ht: 8 Material: VCP Length: 292.8 Slope: 0.400 DVD #0585

Obs. #	VTR Counter	Distance	Location	Description	Rating	Obsrvd (gpm)	Est. (gpm)	Ratings		
								Struct	Clean	Remain (gpm)
1		0.0		US Manhole 5348-024	1					
2		1.2		Crack-Radial	2	0.002	0.002	2	0	0.002
3		3.8		Crack-Radial	2	0.002	0.002	2	0	0.002
4		6.4		PVC begins	1	0.000	0.000	0	0	0.000
5		7.2	1042 N AMIDON / PVC	Break-In Conn	1	0.001	0.001	0	0	0.001
6		9.6		PVC ends	1	0.000	0.000	0	0	0.000
7		11.4		Crack-Radial	2	0.002	0.002	2	0	0.002
8		15.8		Wye Service	1	0.000	0.000	0	0	0.000
9		18.3		Wye Service	1	0.000	0.000	0	0	0.000
10		32.1		Crack-Horizontal	2	0.002	0.002	2	0	0.002
11		34.7		Crack-Radial	2	0.002	0.002	2	0	0.002
12		39.2		Crack-Horizontal	2	0.002	0.002	2	0	0.002
13		40.2		Crack-Radial	2	0.002	0.002	2	0	0.002
14		41.3	1040 N AMIDON	Wye Service / cracked	1	0.000	0.000	0	0	0.000
15		42.4		Crack-Radial	2	0.002	0.002	2	0	0.002
16		43.5	1041 N PERRY	Wye Service	3	0.000	0.000	2	0	0.000
17		44.9		Crack-Radial	2	0.002	0.002	2	0	0.002
18		60.0		Crack-Radial	2	0.002	0.002	2	0	0.002
19		62.5		Crack-Radial	2	0.002	0.002	2	0	0.002
20		62.6		Crack-Horizontal	2	0.002	0.002	2	0	0.002
21		66.7		Wye Service	1	0.000	0.000	0	0	0.000
22		69.2		Wye Service	1	0.000	0.000	0	0	0.000
23		77.9		Crack-Radial	2	0.002	0.002	2	0	0.002
24		80.7		Crack-Radial	2	0.002	0.002	2	0	0.002
25		82.5		Sag begins	3	0.000	0.000	5	0	0.000
26		92.6		Sag	1	0.000	0.000	1	0	0.000
27		93.4		Sag	3	0.000	0.000	5	0	0.000
28		94.4		Sealed Wye Service	1	0.000	0.000	0	0	0.000
29		94.5	Sag depth was at top of camera lens	Sag ends	1	0.000	0.000	1	0	0.000
30		95.6		Crack-Radial	2	0.002	0.002	2	0	0.002
31		98.3		Crack-Radial	2	0.002	0.002	2	0	0.002
32		98.6		Observation Hole	1	0.000	0.000	0	0	0.000
33		100.5		Crack-Radial	2	0.002	0.002	2	0	0.002
34		102.3	1030 N AMIDON	Break-In Conn	4	Needs replaced after CIPP is installed				
35		103.2		Crack-Radial	2	0.002	0.002	2	0	0.002
36		108.3		Crack-Radial	3	0.004	0.004	5	0	0.004
37		110.9		Crack-Radial	2	0.002	0.002	2	0	0.002

Video Inspection Master Report

7/5/2012
12:59 PM

US Structure:	5348-024	1046 N AMIDON AVE	Date Insp:	6/4/2010	Basin:	C03E		
DS Structure:	5348-021	1018 N AMIDON AVE	Dir Televised:	Upstream To Downstream				
38	111.2		Crack-Horizontal	2	0.002	2	0	0.002
39	116.0		Broken Pipe	2	0.008	44	0	0.008
40	117.2		Wye Service	1	0.000	0	0	0.000
41	118.6		Broken Pipe	2	0.008	44	0	0.008
42	119.7		Wye Service	1	0.000	0	0	0.000
43	121.0		Broken Pipe	2	0.008	44	0	0.008
44	123.9		Crack-Radial	2	0.002	2	0	0.002
45	126.2		Broken Pipe	2	0.008	44	0	0.008
46	133.6		Broken Pipe	3	0.010	60	0	0.010
47	142.6	1026 N AMIDON	Wye Service	1	0.000	0	0	0.000
48	144.0		Crack-Horizontal	2	0.002	2	0	0.002
49	145.1	1027 N PERRY	Wye Service	1	0.000	0	0	0.000
50	145.8		Crack-Horizontal	2	0.002	2	0	0.002
51	146.7		Crack-Radial	2	0.002	2	0	0.002
52	159.0		Crack-Radial	2	0.002	2	0	0.002
53	161.6		Crack-Radial	2	0.002	2	0	0.002
54	168.1	1020 N AMIDON	Wye Service	2	0.000	0	0	0.000
55	170.8		Wye Service	1	0.000	0	0	0.000
56	171.6		Crack-Radial	2	0.002	2	0	0.002
57	172.2	1023 N PERRY	Break-In Conn	4	0.008	60	0	0.008
58	184.4		Crack-Radial	2	0.002	2	0	0.002
59	187.0		Broken Pipe	2	0.008	44	0	0.008
60	193.5		Wye Service	1	0.000	0	0	0.000
61	194.6		Crack-Horizontal	2	0.002	2	0	0.002
62	196.0		Wye Service	1	0.000	0	0	0.000
63	202.1		Broken Pipe	3	0.010	60	0	0.010
64	207.7		Broken Pipe	2	0.008	44	0	0.008
65	219.1		Wye Service	1	0.000	0	0	0.000
66	220.4		Broken Pipe	2	0.008	44	0	0.008
67	221.8		Wye Service	1	0.000	0	0	0.000
68	225.3		Crack-Radial	2	0.002	2	0	0.002
69	244.5	1018 N AMIDON	Wye Service	1	0.000	0	0	0.000
70	247.3	1017 N PERRY	Wye Service	4	Needs replaced after CIPP is installed			
71	248.4		Crack-Radial	2	0.002	2	0	0.002
72	270.5		Wye Service	1	0.000	0	0	0.000
73	271.9		Crack-Horizontal	2	0.002	2	0	0.002
74	273.1		Wye Service	1	0.000	0	0	0.000
75	279.5		Crack-Horizontal	2	0.002	2	0	0.002
76	284.6		Broken Pipe	3	0.010	60	0	0.010
77	284.8		Crack-Radial	2	0.002	2	0	0.002
78	287.2		Crack-Radial	2	0.002	2	0	0.002
79	291.6		5348-021 DS Manhole	2				



Television Inspection Master Report

11/3/2010
9:03 AM

US Structure: 5348-070
DS Structure: 5348-067

1048 N PERRY ST
1018 N PERRY ST

Date Insp: 6/9/2010
Dir Televised: Upstream To Downstream

Basin: C03E

Pipe Information
 Shape: Round Length Status: VCP Project No.: B-226
 Dia/Ht: 8 Material: Index:
 Length: 298.5 Slope: 0.400 Surface: Alley Unpaved

Obs. #	VTR	Counter	Distance	Location	Description	Rating	Ratings				
							Obsrvd (gpm)	Est. (gpm)	Struct Clean	Remain (gpm)	
1			0.0		5348-070 US Manhole	1	0.000	0.000	0	0	0.000
2			4.3		Crack-Radial	2	0.002	0.002	2	0	0.002
3			13.5		Wye Service	1	0.000	0.000	0	0	0.000
4			16.2		Wye Service	1	0.000	0.000	0	0	0.000
5			37.8		Break-In Conn	4	0.008	0.008	60	0	0.008
1044 N PERRY											
6			40.0		Broken Pipe	2	0.008	0.008	44	0	0.008
7			41.5		Wye Service	1	0.000	0.000	0	0	0.000
1043 N COOLIDGE											
8			60.2		Crack-Horizontal	2	0.002	0.002	2	0	0.002
9			64.3		Wye Service	1	0.000	0.000	0	0	0.000
10			66.8		Wye Service	1	0.000	0.000	0	0	0.000
11			67.7		Crack-Horizontal	2	0.002	0.002	2	0	0.002
12			83.0		Crack-Horizontal	3	0.004	0.004	5	0	0.004
13			85.5		Crack-Radial	3	0.004	0.004	5	0	0.004
14			89.8		Wye Service	1	0.000	0.000	0	0	0.000
1036 N PERRY											
15			92.3		Wye Service	1	0.000	0.000	0	0	0.000
16			98.3		Crack-Radial	3	0.004	0.004	5	0	0.004
17			99.0		Observation Hole	1	0.000	0.000	0	0	0.000
18			114.8		Wye Service	1	0.000	0.000	0	0	0.000
19			117.4		Wye Service	3	0.000	0.000	2	0	0.000
1037 N COOLIDGE											
20			130.9		Crack-Radial	2	0.002	0.002	2	0	0.002
21			139.6		Wye Service	3	0.000	0.000	2	0	0.000
1032 N PERRY											
22			141.0		Crack-Radial	2	0.002	0.002	2	0	0.002
1025 N PERRY											
23			141.7		PVC Break-In Conn	1	0.001	0.001	0	0	0.001
24			167.3		Wye Service	1	0.000	0.000	0	0	0.000
25			169.9		Wye Service	1	0.000	0.000	0	0	0.000



Television Inspection Master Report

11/3/2010
9:03 AM

US Structure: **5348-070**
DS Structure: **5348-067**

1048 N PERRY ST
1018 N PERRY ST

Date Insp: 6/9/2010
Dir Televised: Upstream To Downstream

Basin: C03E

26	191.2	Crack-Radial	2	0.002	2	0	0.002
27	192.5	Wye Service	1	0.000	0	0	0.000
28	195.0	Wye Service	1	0.000	0	0	0.000
1023 N COOLIDGE							
29	195.0	Break-In Conn	4	0.008	60	0	0.008
1028 N PERRY							
30	195.9	Crack-Radial	2	0.002	2	0	0.002
31	199.1	Observation Hole	1	0.000	0	0	0.000
32	220.6	Wye Service	1	0.000	0	0	0.000
33	222.3	Break-In Conn	3	0.004	2	0	0.004
1022 N PERRY							
34	223.0	Wye Service	1	0.000	0	0	0.000
35	249.0	Wye Service	1	0.000	0	0	0.000
36	249.8	Broken Pipe	2	0.008	44	0	0.008
37	251.5	Wye Service	2	0.000	0	0	0.000
1021 N COOLIDGE							
38	268.0	Broken Pipe	3	0.010	60	0	0.010
39	268.9	Break-In Conn	2	0.002	0	0	0.002
1017 N COOLIDGE							
40	274.6	Wye Service	1	0.000	0	0	0.000
41	277.3	Wye Service	0	0.000	0	0	0.000
42	297.2	DS Manhole	1	0.000	0	0	0.000