

MH 5348-015
Approx. MH depth = 3.9 ft

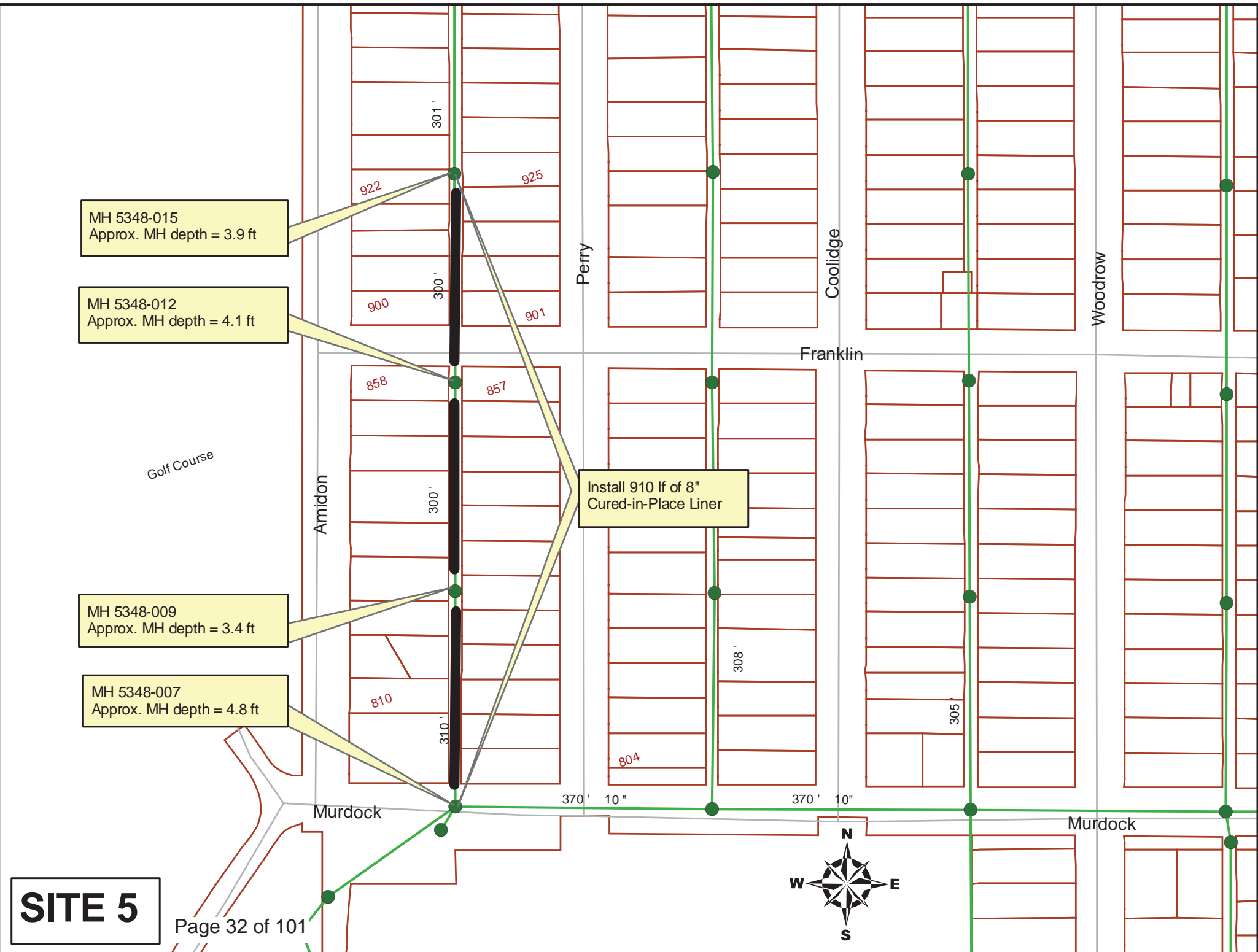
MH 5348-012
Approx. MH depth = 4.1 ft

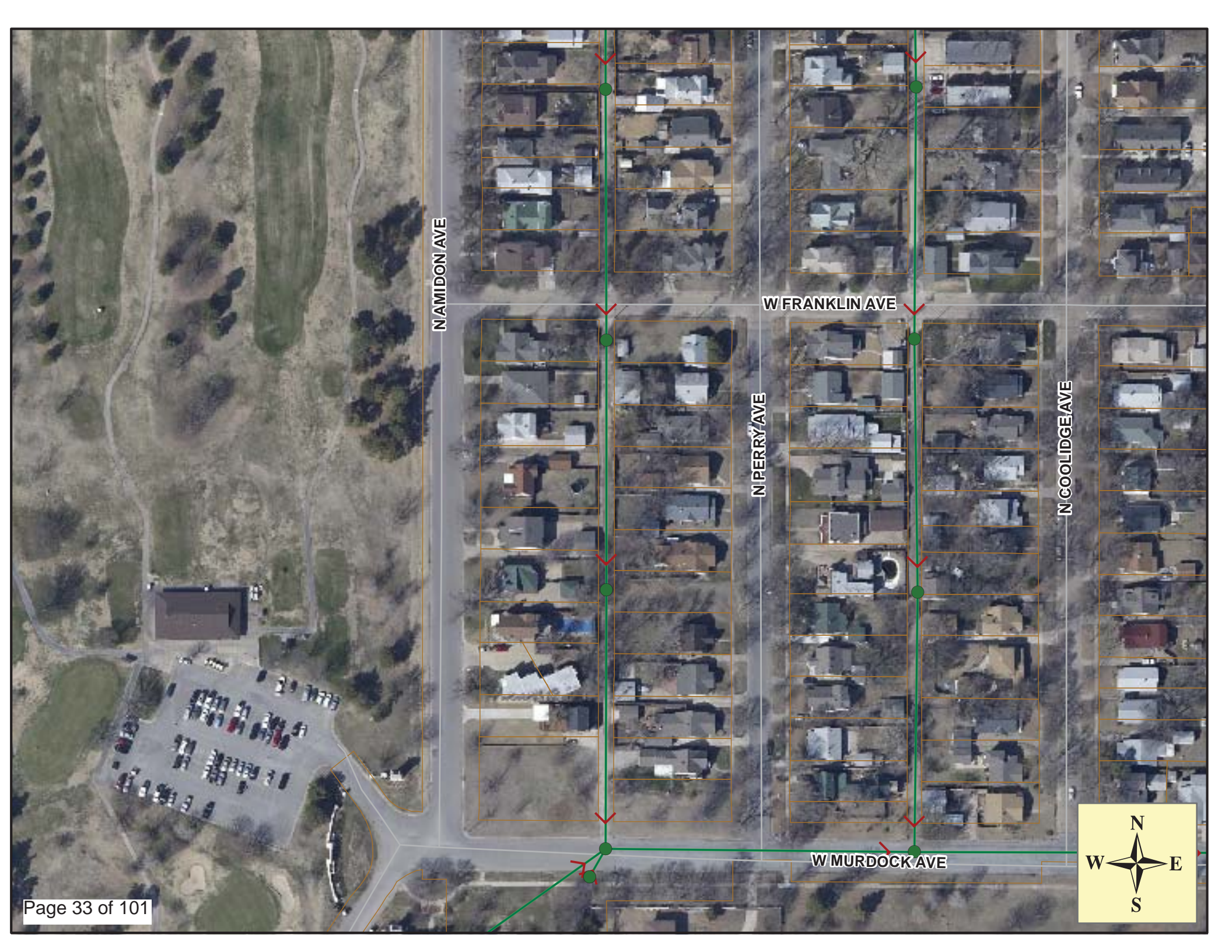
MH 5348-009
Approx. MH depth = 3.4 ft

MH 5348-007
Approx. MH depth = 4.8 ft

Install 910 lf of 8"
Cured-in-Place Liner

SITE 5





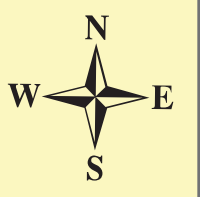
N MIDON AVE

W FRANKLIN AVE

N PERRY AVE

N COOLIDGE AVE

W MURDOCK AVE



Video Inspection Master Report

7/5/2012
1:05 PM

US Structure: 5348-015 932 N AMIDON ST Date Insp: 6/7/2010 Basin: C03E
 DS Structure: 5348-012 858 N AMIDON AVE Dir Televised: Upstream To Downstream

Pipe Information

Dia: 8 Material: VCP Length: 300.7 Slope: 0.002 DVD #0585

Obs. #	VTR Counter	Distance	Location	Description	Rating	Obsrvd (gpm)	Est. (gpm)	Ratings		
								Struct	Clean	Remain (gpm)
1		0.0		5348-015 US Manhole	1	0.000	0	0	0	0.000
2		15.3		Wye Service	1	0.000	0	0	0	0.000
3		18.0		Wye Service	1	0.000	0	0	0	0.000
4		36.6		Crack-Radial	2	0.002	2	0	0	0.002
5		39.9	920 N AMIDON	Wye Service	1	0.000	0	0	0	0.000
6		41.9		Crack-Radial	2	0.002	2	0	0	0.002
7		42.9	917 N PERRY	Wye Service / cracked	3	0.000	2	0	0	0.000
8		62.2		Broken Pipe	2	0.008	44	0	0	0.008
9		64.8	916 N AMIDON / broken off main	Break-In Conn	5	0.010	400	0	0	0.010
10		81.1		Wye Service	1	0.000	0	0	0	0.000
11		82.9	915 N PERRY	Wye Service	1	0.000	0	0	0	0.000
12		92.1		Crack-Horizontal	2	0.002	2	0	0	0.002
13		94.7		Broken Pipe	3	0.010	60	0	0	0.010
14		95.3		Observation Hole / cracked	2	0.000	0	0	0	0.000
15		106.2	914 N AMIDON	Wye Service	5	0.000	400	0	0	0.000
				Is this active or abandoned? Needs verified. Collapsed.						
16		107.4		Broken Pipe	3	0.010	60	0	0	0.010
17		107.5		Crack-Radial	2	0.002	2	0	0	0.002
18		108.6		Wye Service	5	0.000	400	0	0	0.000
				Is this active or abandoned? Needs verified. Collapsed						
19		109.7		Crack-Radial	2	0.002	2	0	0	0.002
20		117.4		Crack-Horizontal	2	0.002	2	0	0	0.002
21		122.1		Broken Pipe	2	0.008	44	0	0	0.008
22		124.9		Broken Pipe	2	0.008	44	0	0	0.008
23		129.8		Crack-Radial	2	0.002	2	0	0	0.002
24		131.3	910 N AMIDON	Wye Service	1	0.000	0	0	0	0.000
25		132.2		Crack-Radial	3	0.004	5	0	0	0.004
26		133.9	905 N PERRY	Wye Service	1	0.000	0	0	0	0.000
27		134.9		Crack-Radial	2	0.002	2	0	0	0.002
28		137.4		Broken Pipe	2	0.008	44	0	0	0.008
29		139.9		Crack-Radial	2	0.002	2	0	0	0.002
30		142.6		Crack-Radial	2	0.002	2	0	0	0.002
31		147.3		Crack-Horizontal	2	0.002	2	0	0	0.002
32		156.3	908 N AMIDON	Wye Service	1	0.000	0	0	0	0.000

Video Inspection Master Report

7/5/2012
1:05 PM

US Structure:	5348-015	932 N AMIDON ST	Date Insp:	6/7/2010	Basin:	C03E	
DS Structure:	5348-012	858 N AMIDON AVE	Dir Televised:	Upstream To Downstream			
33	158.8		Wye Service	1	0.000	0	0.000
34	177.5		Crack-Radial	2	0.002	2	0.002
35	180.2		Broken Pipe	3	0.010	60	0.010
36	180.8	900 N AMIDON / roots inside	Wye Service	1	0.000	0	0.000
37	182.6		Crack-Radial	2	0.002	2	0.002
38	183.0	901 N PERRY	Wye Service	3	0.000	2	0.000
39	185.0		Broken Pipe	3	0.010	60	0.010
40	187.2		Crack-Radial	2	0.002	2	0.002
41	192.2		Crack-Radial	3	0.004	5	0.004
42	194.9		Crack-Horizontal	2	0.002	2	0.002
43	195.2		Observation Hole / cracked	1	0.000	0	0.000
44	202.5		Crack-Radial	2	0.002	2	0.002
45	204.7		Roots	2	0.004	2	0.004
46	205.1		Crack-Radial	2	0.002	2	0.002
47	206.6		Wye Service	1	0.000	0	0.000
48	207.5		Crack-Radial	3	0.004	5	0.004
49	209.1		Wye Service	1	0.000	0	0.000
50	232.6		Roots	2	0.004	2	0.004
51	232.9		Crack-Radial	2	0.002	2	0.002
52	240.4		Broken Pipe	2	0.008	44	0.008
53	245.6		Broken Pipe	4	0.030	78	0.030
54	265.7		Crack-Radial	2	0.002	2	0.002
55	268.2		Broken Pipe	3	0.010	60	0.010
56	290.1		Wye Service	1	0.000	0	0.000
57	291.1		Crack-Radial	2	0.002	2	0.002
58	292.6		Wye Service	2	0.000	0	0.000
59	300.4	5348-012 DS Manhole		2	0.000	0	0.000

There are more roots than what is listed on the tv log.

Video Inspection Master Report

7/5/2012
1:05 PM

US Structure: 5348-012 858 N AMIDON AVE Date Insp: 6/7/2010 Basin: C03E
 DS Structure: 5348-009 830 N AMIDON AVE Dir Televised: Upstream To Downstream

Pipe Information

Dia: 8 Material: VCP Length: 300.4 Slope: 0.100 DVD #0585

Obs. #	VTR Counter	Distance	Location	Description	Rating	Ratings			Remain (gpm)
						Obsrvd (gpm)	Est. (gpm)	Struct Clean	
1		0.0		US Manhole	1	0.000	0	0	0.000
2		0.0		Crack-Radial	2	0.002	2	0	0.002
3		7.0		Crack-Radial	2	0.002	2	0	0.002
4		9.2		Crack-Radial	2	0.002	2	0	0.002
5		15.9		Wye Service	1	0.000	0	0	0.000
6		16.8		Broken Pipe	3	0.010	60	0	0.010
7		17.8	857 N PERRY	Wye Service	1	0.000	0	0	0.000
8		19.3		Crack-Radial	2	0.002	2	0	0.002
9		39.3		PVC begins	1	0.000	0	0	0.000
10		40.8	858 N AMIDON	PVC Break-In Conn	1	0.001	0	0	0.001
11		41.9	853 N PERRY	PVC Break-In Conn	1	0.001	0	0	0.001
12		43.4		PVC ends	1	0.000	0	0	0.000
13		44.4		Crack-Radial	2	0.002	2	0	0.002
14		52.0		Crack-Horizontal	2	0.002	2	0	0.002
15		54.5		Crack-Horizontal	2	0.002	2	0	0.002
16		64.7		Broken Pipe	3	0.010	60	0	0.010
17		65.5	852 N AMIDON	Wye Service / cracked	3	0.000	2	0	0.000
18		67.0		Crack-Radial	2	0.002	2	0	0.002
19		68.5		Wye Service	1	0.000	0	0	0.000
20		69.6		Crack-Radial	2	0.002	2	0	0.002
21		72.2		Crack-Radial	2	0.002	2	0	0.002
22		74.9		Broken Pipe	2	0.008	44	0	0.008
23		79.8		Crack-Radial	2	0.002	2	0	0.002
24		87.5		Broken Pipe	2	0.008	44	0	0.008
25		89.8		Broken Pipe	4	0.030	78	0	0.030
26		90.5	848 N AMIDON	Wye Service	1	0.000	0	0	0.000
27		92.3		Broken Pipe	2	0.008	44	0	0.008
28		93.7		Wye Service	2	0.000	0	0	0.000
29		95.0		Broken Pipe	2	0.008	44	0	0.008
30		97.7		Observation Hole	1	0.000	0	0	0.000
31		116.2		Wye Service	1	0.000	0	0	0.000
32		117.4		Broken Pipe	2	0.008	44	0	0.008
33		118.1	849 N PERRY	Wye Service	1	0.000	0	0	0.000
34		125.0		Crack-Radial	3	0.004	5	0	0.004

US Structure: 5348-012 858 N AMIDON AVE Date Insp: 6/7/2010 Basin: C03E
 DS Structure: 5348-009 830 N AMIDON AVE Dir Televised: Upstream To Downstream

35	132.1			Crack-Radial	2	0.002	2	0	0.002
36	139.9			Crack-Horizontal	2	0.002	2	0	0.002
37	141.4			Wye Service	1	0.000	0	0	0.000
38	142.4			Broken Pipe	2	0.008	44	0	0.008
39	142.6			Crack-Radial	2	0.002	2	0	0.002
40	143.8			Wye Service	2	0.000	0	0	0.000
41	145.2			Broken Pipe	2	0.008	44	0	0.008
42	155.1			Broken Pipe	3	0.010	60	0	0.010
43	157.7			Broken Pipe	2	0.008	44	0	0.008
44	166.4			Wye Service	1	0.000	0	0	0.000
45	167.3			Crack-Radial	2	0.002	2	0	0.002
46	168.0	839 N PERRY / roots inside		Wye Service	2	0.000	0	0	0.000
47	175.0			Crack-Radial	2	0.002	2	0	0.002
48	177.4			Crack-Radial	2	0.002	2	0	0.002
49	189.9			Crack-Horizontal	2	0.002	2	0	0.002
50	191.2	842 N AMIDON		Wye Service	2	0.000	0	0	0.000
51	193.6	837 N PERRY		Wye Service	1	0.000	0	0	0.000
52	194.5			Crack-Horizontal	2	0.002	2	0	0.002
53	197.3			Crack-Horizontal	2	0.002	2	0	0.002
54	197.7		Observation Hole / cracked	2	0.000	0	0	0.000	
55	199.9		Broken Pipe	3	0.010	60	0	0.010	
56	212.3		Crack-Radial	2	0.002	2	0	0.002	
57	215.4	Piece of Plastic:	Sealed off Wye Service	2	0.000	0	0	0.000	
There is a piece of plastic stuck in the sealed off wye pocket. It could puncture the tube, so it needs to be cut off, knocked out, pushed sideways, or somehow removed prior to liner installation.									
58	217.1		Crack-Radial	2	0.002	2	0	0.002	
59	218.6		Wye Service	2	0.000	0	0	0.000	
60	236.3	836 N AMIDON		Break-In Conn	1	0.001	0	0	0.001
61	239.5		Crack-Radial	2	0.002	2	0	0.002	
62	240.9		Wye Service	1	0.000	0	0	0.000	
63	241.8		Crack-Radial	2	0.002	2	0	0.002	
64	243.5		Wye Service	1	0.000	0	0	0.000	
65	256.8		Crack-Radial	2	0.002	2	0	0.002	
66	265.6		Wye Service	1	0.000	0	0	0.000	
67	266.5		Crack-Radial	2	0.002	2	0	0.002	
68	268.2	833 N PERRY		Wye Service	1	0.000	0	0	0.000
69	279.4		Crack-Radial	2	0.002	2	0	0.002	
70	281.9		Crack-Horizontal	2	0.002	2	0	0.002	
71	288.8		Crack-Radial	2	0.002	2	0	0.002	
72	290.4	830 N AMIDON / roots in service		Wye Service	2	0.000	0	0	0.000
73	291.6		Crack-Radial	2	0.002	2	0	0.002	
74	293.0		Wye Service	1	0.000	0	0	0.000	
75	294.0		Crack-Radial	2	0.002	2	0	0.002	
76	299.3		5348-009 DS Manhole	3					

Video Inspection Master Report

7/5/2012
1:05 PM

US Structure: 5348-009 830 N AMIDON AVE Date Insp: 6/8/2010 Basin: C03E
 DS Structure: 5348-007 810 N AMIDON ST Dir Televised: Upstream To Downstream

Pipe Information

Shape: Round Length Status: VCP Project No. : B-228
 Dia/Ht: 8 Material: Index:
 Length: 309.7 Slope: 0.002 Surface:

Obs. #	VTR	Counter	Distance	Location	Description	Rating	Ratings							
							Obsrvd (gpm)	Est. (gpm)	Struct	Clean	Remain (gpm)			
1			0.0		5348-009 US Manhole	1								
2			16.0		Wye Service	1	0.000	0.000	0	0	0.000			
3			17.5	827 N PERRY	Break-In Conn	1	0.001	0.001	0	0	0.001			
4			40.8		Wye Service	1	0.000	0.000	0	0	0.000			
5			41.9		Crack-Radial	2	0.002	0.002	2	0	0.002			
6			43.5		Wye Service	1	0.000	0.000	0	0	0.000			
7			50.9	822 N AMIDON	Break-In Conn	1	0.001	0.001	0	0	0.001			
8			59.1		Crack-Radial	2	0.002	0.002	2	0	0.002			
9			65.7		Wye Service	1	0.000	0.000	0	0	0.000			
10			66.9		Broken Pipe	2	0.008	0.008	44	0	0.008			
11			68.1	823 N PERRY	Wye Service	1	0.000	0.000	0	0	0.000			
12			72.0		Crack-Radial	2	0.002	0.002	2	0	0.002			
13			89.1		Crack-Radial	2	0.002	0.002	2	0	0.002			
14			90.5	818 N AMIDON	Wye Service	1	0.000	0.000	0	0	0.000			
15			91.5		Broken Pipe	2	0.008	0.008	44	0	0.008			
16			92.7	819 N PERRY	Wye Service	3	0.000	0.000	2	0	0.000			
17			94.4		Observation Hole	1	0.000	0.000	0	0	0.000			
18			96.8		Crack-Radial	2	0.002	0.002	2	0	0.002			
19			113.5	Joint	Offset	3	0.010	0.010	20	0	0.010			
20			115.6	822 N AMIDON	Wye Service	1	0.000	0.000	0	0	0.000			
21			118.0		Wye Service	1	0.000	0.000	0	0	0.000			
22			126.1		Roots	2	0.004	0.004	2	4	0.004			
23			129.9	820 N AMIDON	Break-In Conn	1	0.001	0.001	0	0	0.001			
24			134.2		Broken Pipe	2	0.008	0.008	44	0	0.008			
25			140.3		Wye Service	1	0.000	0.000	0	0	0.000			
26			142.9		Wye Service	1	0.000	0.000	0	0	0.000			
27			152.3	810 N AMIDON	Break-In Conn	1	0.001	0.001	0	0	0.001			
28			165.1		Wye Service	1	0.000	0.000	0	0	0.000			

Video Inspection Master Report

7/5/2012
1:05 PM

US Structure:	5348-009	830 N AMIDON AVE	Date Insp:	6/8/2010	Basin:	C03E		
DS Structure:	5348-007	810 N AMIDON ST	Dir Televised:	Upstream To Downstream				
29	166.0		Crack-Radial	2	0.002	2	0	0.002
30	167.6	807 N PERRY	Wye Service	1	0.000	0	0	0.000
31	168.5		Crack-Radial	3	0.004	5	0	0.004
32	171.0		Crack-Radial	2	0.002	2	0	0.002
33	189.9		Wye Service	1	0.000	0	0	0.000
34	192.3		Wye Service	1	0.000	0	0	0.000
35	196.2		Observation Hole	2	0.000	0	0	0.000
36	198.6		Crack-Radial	2	0.002	2	0	0.002
37	200.9		Crack-Radial	3	0.004	5	0	0.004
38	213.3		Crack-Horizontal	2	0.002	2	0	0.002
39	214.6		Wye Service	1	0.000	0	0	0.000
40	215.7		Crack-Radial	2	0.002	2	0	0.002
41	217.1	807 N PERRY	Wye Service	3	0.000	2	0	0.000
42	218.0		Broken Pipe	3	0.010	60	0	0.010
43	239.5		Wye Service	1	0.000	0	0	0.000
44	241.9		Wye Service	1	0.000	0	0	0.000
45	265.4		Crack-Radial	2	0.002	2	0	0.002
46	266.9		Wye Service	2	0.000	0	0	0.000
47	267.6		Crack-Horizontal	2	0.002	2	0	0.002
48	269.2		Wye Service	1	0.000	0	0	0.000
49	272.8		Crack-Radial	2	0.002	2	0	0.002
50	277.5		Crack-Horizontal	2	0.002	2	0	0.002
51	279.9	Joint	Offset	2	0.000	0	0	0.000
52	285.5		Crack-Horizontal	2	0.002	2	0	0.002
53	286.0		Broken Pipe	3	0.010	60	0	0.010
54	295.1		Crack-Radial	3	0.004	5	0	0.004
55	300.4		Crack-Radial	2	0.002	2	0	0.002
56	306.9	DS Manhole 5348-007		2	0.000	0	0	0.000

Video for this segment was not able to be viewed by office staff. Field recommended CIPP. -LML