

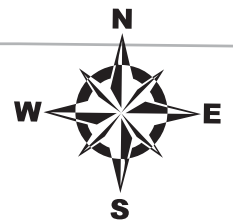
MH 5348-120
Approx. MH depth = 7.9 ft

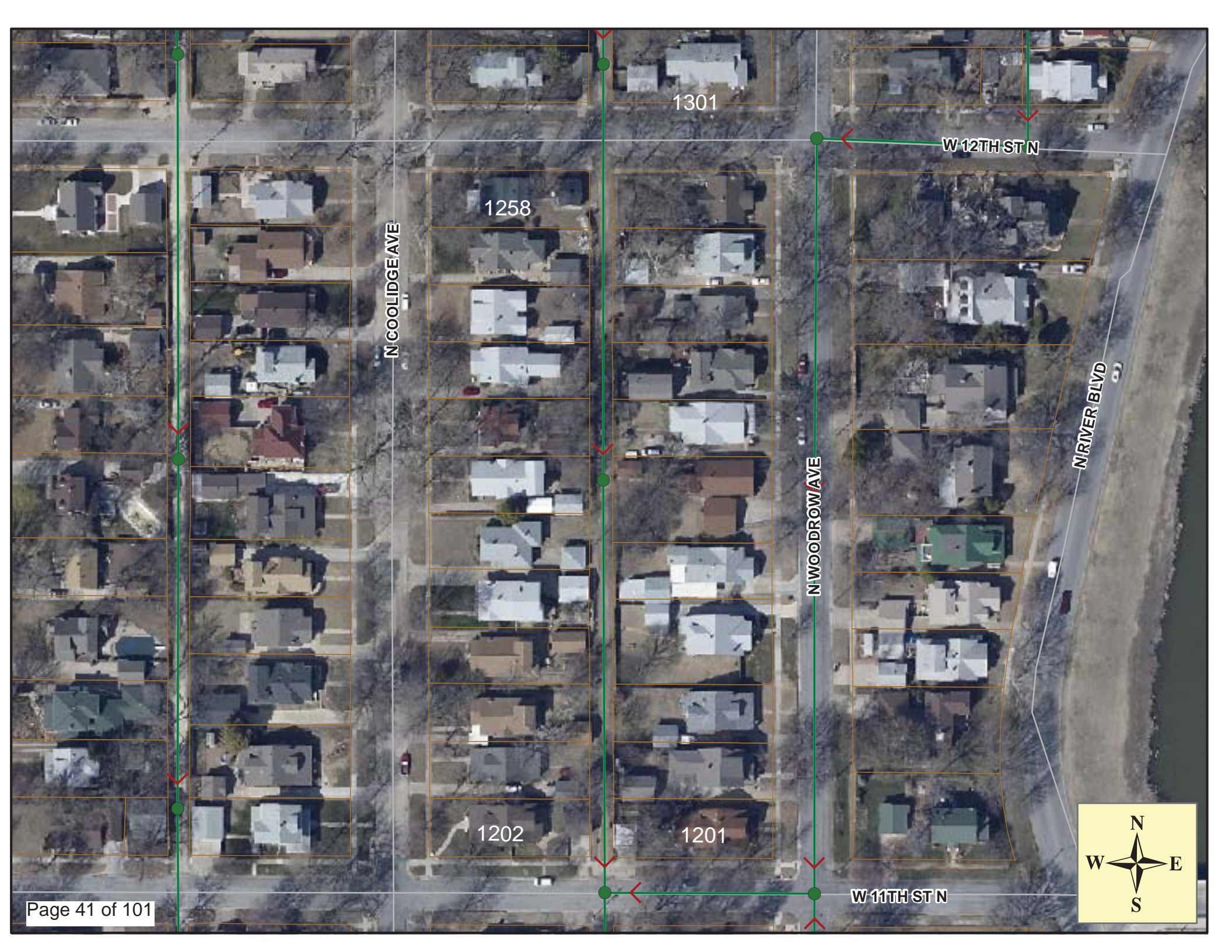
MH 5348-117
Approx. MH depth = 8.6 ft

MH 5348-114
Approx. MH depth = 6.0 ft

Install 734 lf of 8"
Cured-in-Place Liner

SITE 6





1301

1258

N COOLIDGE AVE

N WOODROW AVE

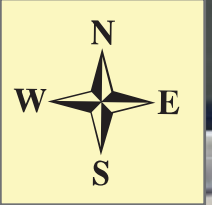
W 12TH ST N

N RIVER BLVD

1202

1201

W 11TH ST N





Television Inspection Master Report

8/13/2010
1:07 PM

US Structure: 5348-120 1301 N WOODROW ST Date Insp: 5/18/2010 Basin: C03E
 DS Structure: 5348-117 1232 N COOLIDGE AVE Dir Televised:Upstream To Downstream

Pipe Information

Project No. : B-223 Dia/Ht: 8 Material: VCP Length: 362.6 Tape ID: DVD #0585

Obs. #	VTR Counter	Distance	Location	Description	Rating	Obsrvd (gpm)	Est. (gpm)	Ratings		
								Struct	Clean	Remain (gpm)
1		0.0		5348-120 US Manhole						
2		5.1		Crack-Radial	2	0.002	0.002	2	0	0.002
3		10.2		Crack-Radial	2	0.002	0.002	2	0	0.002
4		12.6		Broken Pipe	3	0.010	0.010	60	0	0.010
5		15.1	1302 N COOLIDGE	Break-In Conn	3	0.004	0.004	2	0	0.004
6		15.7		Crack-Horizontal	2	0.002	0.002	2	0	0.002
7		20.2		Crack-Radial	2	0.002	0.002	2	0	0.002
8		22.7		Crack-Horizontal	3	0.004	0.004	5	0	0.004
9		27.3		Wye Service	1	0.000	0.000	0	0	0.000
10		28.0	Joint	Offset	4	0.030	0.030	60	0	0.030
11		29.1	1301 N WOODROW	Wye Service / roots	2	0.000	0.000	0	0	0.000
12		30.5		Broken Pipe	3	0.010	0.010	60	0	0.010
13		46.6		Crack-Radial	2	0.002	0.002	2	0	0.002
14		49.1		Crack-Radial	2	0.002	0.002	2	0	0.002
15		54.3		Crack-Radial	3	0.004	0.004	5	0	0.004
16		56.9		Crack-Radial	2	0.002	0.002	2	0	0.002
17		62.2		Crack-Radial	2	0.002	0.002	2	0	0.002
18		64.8		Crack-Radial	2	0.002	0.002	2	0	0.002
19		69.9		Crack-Radial	2	0.002	0.002	2	0	0.002
20		72.2		Crack-Radial	2	0.002	0.002	2	0	0.002
21		75.0		Crack-Radial	2	0.002	0.002	2	0	0.002
22		77.5		Crack-Radial	2	0.002	0.002	2	0	0.002
23		80.1		Crack-Radial	2	0.002	0.002	2	0	0.002
24		82.6		Crack-Radial	2	0.002	0.002	2	0	0.002
25		87.7		Crack-Radial	2	0.002	0.002	2	0	0.002
26		90.3		Crack-Radial	2	0.002	0.002	2	0	0.002
27		92.9		Crack-Radial	2	0.002	0.002	2	0	0.002
28		97.9		Crack-Radial	2	0.002	0.002	2	0	0.002
29		102.8		Crack-Radial	2	0.002	0.002	2	0	0.002
30		105.3		Crack-Radial	2	0.002	0.002	2	0	0.002
31		107.9		Crack-Radial	2	0.002	0.002	2	0	0.002
32		110.3		Crack-Radial	2	0.002	0.002	2	0	0.002
33		112.9		Crack-Radial	2	0.002	0.002	2	0	0.002
34		120.5		Crack-Radial	2	0.002	0.002	2	0	0.002
35		121.2		Observation Hole	2	0.000	0.000	0	0	0.000



Television Inspection Master Report

8/13/2010
1:07 PM

US Structure: 5348-120
DS Structure: 5348-117

1301 N WOODROW ST
1232 N COOLLIDGE AVE

Date Insp: 5/18/2010
Dir Televised: Upstream To Downstream

Basin: C03E

36	123.0	Crack-Radial	2	0.002	2	0	0.002
37	123.9	Break-In Conn	3	0.004	2	0	0.004
1257 N WOODROW							
38	125.7	Crack-Radial	2	0.002	2	0	0.002
PVC Break-In Conn							
39	136.8	PVC Break-In Conn	1	0.001	0	0	0.001
1258 N COOLLIDGE							
40	144.6	Wye Service	1	0.000	0	0	0.000
41	147.1	Wye Service	1	0.000	0	0	0.000
42	169.5	Wye Service	1	0.000	0	0	0.000
PVC Break-In Conn							
43	171.4	PVC Break-In Conn	1	0.001	0	0	0.001
1253 N WOODROW							
44	175.9	Broken Pipe	5	0.060	100	0	0.060
Break-In Conn							
45	183.9	Break-In Conn	3	0.004	2	0	0.004
1252 N COOLLIDGE							
46	192.7	Crack-Radial	2	0.002	2	0	0.002
47	194.5	Wye Service	1	0.000	0	0	0.000
48	197.0	Wye Service	1	0.000	0	0	0.000
49	197.9	Crack-Radial	2	0.002	2	0	0.002
Break-In Conn							
50	201.5	Break-In Conn	3	0.004	2	0	0.004
1247 N WOODROW							
51	202.7	Crack-Radial	2	0.002	2	0	0.002
Break-In Conn							
52	211.5	Break-In Conn	4	0.008	60	0	0.008
1248 N COOLLIDGE							
53	217.9	Crack-Radial	2	0.002	2	0	0.002
54	219.3	Wye Service	1	0.000	0	0	0.000
55	221.9	Wye Service	1	0.000	0	0	0.000
56	240.4	Crack-Horizontal	2	0.002	2	0	0.002
57	240.7	Observation Hole	2	0.000	0	0	0.000
58	242.7	Crack-Radial	2	0.002	2	0	0.002
59	244.3	Wye Service	1	0.000	0	0	0.000
60	245.3	Crack-Radial	2	0.002	2	0	0.002
Wye Service							
61	246.1	Wye Service	3	0.000	2	0	0.000
1241 N WOODROW							
62	247.7	Crack-Radial	2	0.002	2	0	0.002
Break-In Conn							
63	255.0	Break-In Conn	3	0.004	2	0	0.004
1242 N COOLLIDGE							
64	267.8	Crack-Radial	2	0.002	2	0	0.002
65	269.4	Wye Service	1	0.000	0	0	0.000



Television Inspection Master Report

8/13/2010
1:07 PM

US Structure: 5348-120 1301 N WOODROW ST Date Insp: 5/18/2010 Basin: C03E
 DS Structure: 5348-117 1232 N COOLLIDGE AVE Dir Televised: Upstream To Downstream

66	270.3	Crack-Radial	2	0.002	2	0	0.002
67	271.9	Wye Service	1	0.000	0	0	0.000
68	290.4	Crack-Radial	2	0.002	2	0	0.002
69	292.4	Break-In Conn	4	0.008	60	0	0.008
1237 N WOODROW							
70	294.3	Wye Service	1	0.000	0	0	0.000
71	295.3	Crack-Radial	2	0.002	2	0	0.002
72	296.9	Wye Service	1	0.000	0	0	0.000
73	297.9	Crack-Radial	2	0.002	2	0	0.002
74	302.9	Crack-Radial	2	0.002	2	0	0.002
75	305.4	Crack-Radial	2	0.002	2	0	0.002
76	315.4	Crack-Radial	2	0.002	2	0	0.002
77	318.0	Crack-Radial	2	0.002	2	0	0.002
78	319.6	Wye Service	1	0.000	0	0	0.000

The downstream 40 if was replaced "by others".

79	321.5	1237 N WOODROW	3	<u>Tap is now PVC</u>	2	0	0.002
80	343.1	Crack-Radial	2	0.002	2	0	0.002
81	343.9	1238 N COOLLIDGE	5	<u>Tap is now PVC</u>	2	0	0.002
82	345.6	Crack-Radial	2	0.002	0	0	0.000
83	347.3	Wye Service	1	0.000	0	0	0.000
84	348.2	Crack-Radial	2	0.002	2	0	0.002
85	362.1	5348-117 DS Manhole	3	0.000	0	0	0.000

The downstream 40 if was replaced "by others".



Television Inspection Master Report

8/13/2010
1:07 PM

US Structure: 5348-117 1232 N COOLLIDGE AVE Date Insp: 5/18/2010 Basin: C03E
 DS Structure: 5348-114 1201 N WOODROW ST Dir Televised: Upstream To Downstream

Pipe Information
 Project No.: B-223 Dia/Ht: 8 Material: VCP Length: 371.1 Tape ID: DVD #0585

Obs. #	VTR Counter	Distance	Location	Description	Rating	Ratings								
						Obsrvd (gpm)	Est. (gpm)	Struct	Clean	Remain (gpm)				
1		0.0		5348-117 US Manhole										
2		0.8		Crack-Radial	3	0.004	0.004	2	0	0.004				
3		3.5		Crack-Radial	2	0.002	0.002	2	0	0.002				
4		6.1		Crack-Radial	2	0.002	0.002	2	0	0.002				
5		7.1		PVC Break-In Conn	1	0.001	0.001	0	0	0.001				
1232 N COOLLIDGE														
6		9.3		Wye Service	1	0.000	0.000	0	0	0.000				
1231 N WOODROW														
7		13.7		Crack-Radial	2	0.002	0.002	2	0	0.002				
8		31.5		Crack-Radial	2	0.002	0.002	2	0	0.002				
9		33.1		Wye Service	1	0.000	0.000	0	0	0.000				
10		35.7		Wye Service	1	0.000	0.000	0	0	0.000				
11		44.3		Crack-Radial	2	0.002	0.002	2	0	0.002				
12		51.6		Crack-Radial	2	0.002	0.002	2	0	0.002				
13		54.1		Crack-Radial	2	0.002	0.002	2	0	0.002				
14		56.7		Crack-Radial	2	0.002	0.002	2	0	0.002				
15		57.5		Break-In Conn	4	0.008	0.008	60	0	0.008				
1228 N COOLLIDGE														
16		60.9		Wye Service	1	0.000	0.000	0	0	0.000				
17		71.9		Crack-Radial	2	0.002	0.002	2	0	0.002				
18		76.9		Crack-Radial	2	0.002	0.002	2	0	0.002				
19		83.5		Wye Service	1	0.000	0.000	0	0	0.000				
20		86.0		Wye Service	1	0.000	0.000	0	0	0.000				
21		86.9		Crack-Radial	2	0.002	0.002	2	0	0.002				
22		91.9		Crack-Radial	2	0.002	0.002	2	0	0.002				
23		108.7		Wye Service	1	0.000	0.000	0	0	0.000				
24		109.6		Crack-Radial	3	0.004	0.004	5	0	0.004				
25		110.4		Wye Service	1	0.000	0.000	0	0	0.000				
1225 N WOODROW														
26		111.9		Crack-Radial	2	0.002	0.002	2	0	0.002				
27		114.5		Crack-Radial	2	0.002	0.002	2	0	0.002				
28		119.5		Crack-Radial	3	0.004	0.004	5	0	0.004				
29		120.1		Observation Hole	1	0.000	0.000	0	0	0.000				
30		127.1		Crack-Radial	2	0.002	0.002	2	0	0.002				
31		132.3		Crack-Radial	2	0.002	0.002	2	0	0.002				
32		133.2		Wye Service	3	0.000	0.000	2	0	0.000				
1222 N COOLLIDGE / offset														
33		135.7		Wye Service	1	0.000	0.000	0	0	0.000				
1219 N WOODROW														
34		139.9		Crack-Radial	3	0.004	0.004	5	0	0.004				



Television Inspection Master Report

8/13/2010
1:07 PM

US Structure:	5348-117	1232 N COOLIDGE AVE	Date Insp:	5/18/2010	Basin:	C03E
DS Structure:	5348-114	1201 N WOODROW ST	Dir Televised:	Upstream To Downstream		
35	159.3					
36	160.0					
37	161.6					
38	161.8					
1218 N COOLIDGE						
39	184.4					
40	186.8					
41	209.4					
42	212.0					
43	228.1					
44	233.0					
45	234.1					
1214 N COOLIDGE						
46	235.6					
47	236.7					
1211 N WOODROW						
48	241.3					
49	243.1					
50	248.3					
51	251.7					
1206 N COOLIDGE						
52	253.4					
53	255.7					
54	257.4					
55	259.3					
56	263.5					
57	276.1					
58	278.6					
59	282.8					
60	283.8					
61	284.7					
1205 N WOODROW / roots						
62	298.9					
63	301.3					
64	301.8					
65	304.0					
66	307.3					
1202 N COOLIDGE						
67	309.8					
1201 N WOODROW						
68	332.7					
69	336.0					
70	370.7					

5348-114 DS Manhole