

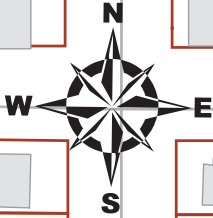
Install 595 lf of 8" Cured-in-Place Liner

MH 5348-103
Approx. MH depth = 6.8 ft

MH 5348-100
Approx. MH depth = 7.4 ft

MH 5348-097
924 N Coolidge
Approx. MH depth = 7.5 ft

SITE 9



Perry

301'

Coolidge

295'

298'

Harrison

Woodrow

Porter

Franklin

1002

1001

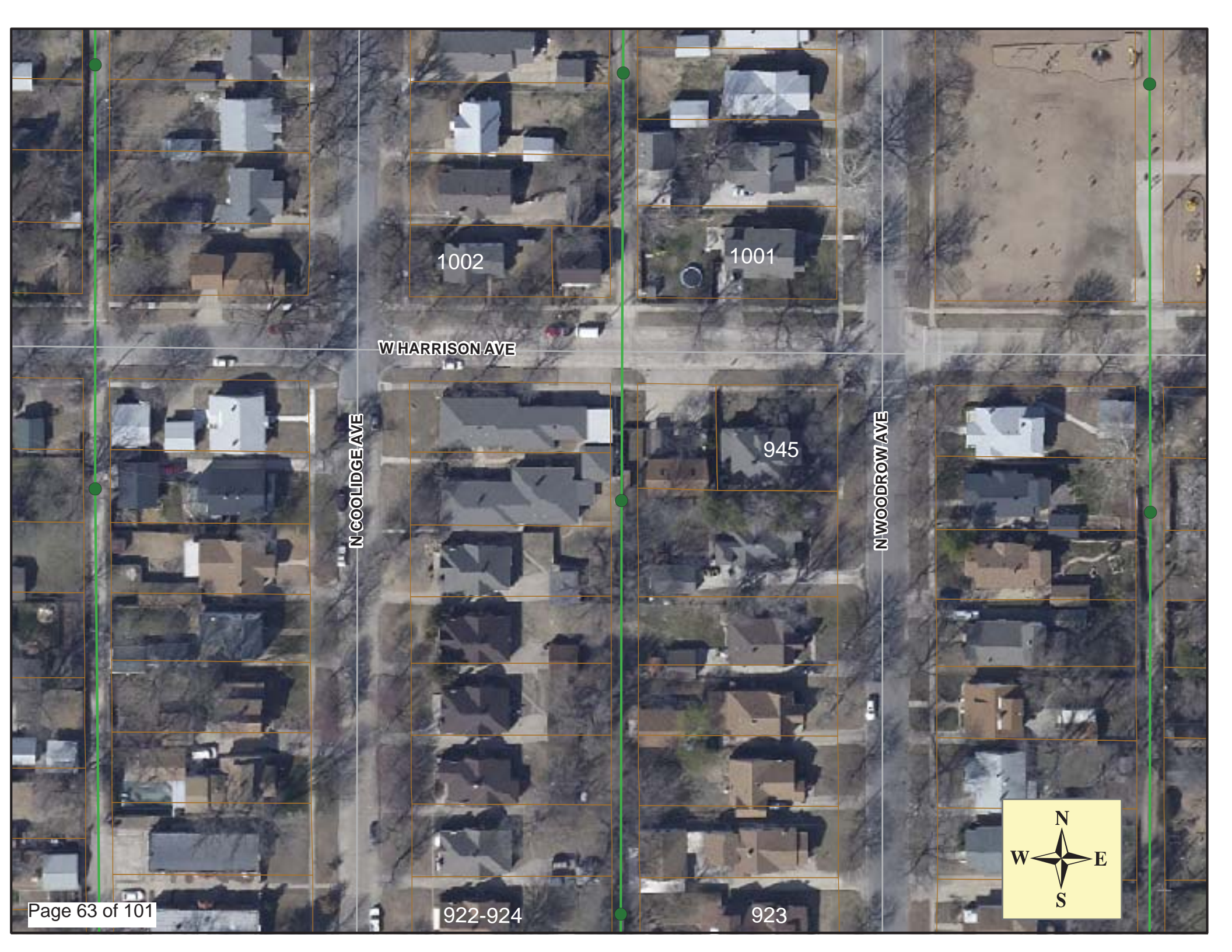
945

922
924

923

901

957



1002

1001

W HARRISON AVE

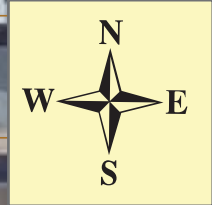
N COOLIDGE AVE

945

N WOODROW AVE

922-924

923





Television Inspection Master Report

8/13/2010
1:27 PM

US Structure: 5348-103
DS Structure: 5348-100

1016 N COOLLIDGE ST
962 N COOLLIDGE ST

Date Insp: 5/25/2010
Dir Televised: Upstream To Downstream

Basin: C03E

Pipe Information

Project No. : B-223 Dia/Ht: 8 Material: VCP Length: 300.8 : Tape ID: DVD #0585

Obs. #	VTR Counter	Distance	Location	Description	Rating	Obsrvd (gpm)	Ratings			Remain (gpm)
							Est. (gpm)	Struct	Clean	
1		0.0		5348-103 US Manhole						
2		0.0		Break-In Conn	3	0.004	2	0	0.004	
			1016 N COOLLIDGE / tap sits low on main							
3		7.0		Break-In Conn	3	0.004	2	0	0.004	
			1015 N WOODROW							
4		22.4		Wye Service	1	0.000	0	0	0.000	
5		25.1		Wye Service	1	0.000	0	0	0.000	
6		47.4		Wye Service	2	0.000	0	0	0.000	
			1012 N COOLLIDGE / heavy roots							
7		50.1		PVC Break-In Conn	1	0.001	0	0	0.001	
			1007 N WOODROW							
8		75.1		PVC Break-In Conn	1	0.001	0	0	0.001	
			1006 N COOLLIDGE							
9		78.0		Wye Service	1	0.000	0	0	0.000	
10		97.2		Observation Hole	1	0.000	0	0	0.000	
11		99.2		Crack-Radial	3	0.004	5	0	0.004	
12		100.5		Wye Service	1	0.000	0	0	0.000	
13		100.9		Break-In Conn	3	0.004	2	0	0.004	
			1002 N COOLLIDGE							
14		103.1		Wye Service	1	0.000	0	0	0.000	
15		116.0		Break-In Conn	3	0.004	2	0	0.004	
			1710 W HARRISON / roots inside							
16		125.9		Wye Service	1	0.000	0	0	0.000	
17		127.1		Broken Pipe	3	0.010	60	0	0.010	
18		127.7		PVC Break-In Conn	1	0.001	0	0	0.001	
			1001 N WOODROW							
19		129.4		Crack-Radial	2	0.002	2	0	0.002	
20		134.3		Crack-Radial	2	0.002	2	0	0.002	
21		146.6		Broken Pipe	3	0.010	60	0	0.010	
22		149.1		Broken Pipe	3	0.010	60	0	0.010	
23		150.6		Wye Service	2	0.000	0	0	0.000	
24		153.2		Wye Service	2	0.000	0	0	0.000	
			150.6 roots / cannot see if sealed							
			153.2 roots / cannot see if sealed							
25		167.0		Crack-Radial	2	0.002	2	0	0.002	
26		172.0		Broken Pipe	4	0.030	78	0	0.030	
27		200.4		Observation Hole	1	0.000	0	0	0.000	
28		207.3		Crack-Radial	1	0.001	1	0	0.001	
29		215.3		Crack-Horizontal	2	0.002	2	0	0.002	
30		215.6		Crack-Radial	2	0.002	2	0	0.002	

US Structure:	5348-103	1016 N COOLIDGE ST	Date Insp:	5/25/2010	Basin:	C03E			
DS Structure:	5348-100	962 N COOLIDGE ST	Dir Televised:	Upstream To Downstream					
31	228.8		Break-In Conn	3	0.004	2	0	0.004	
962 N COOLIDGE / roots around outside of the tap									
32	235.1		Crack-Radial	2	0.002	2	0	0.002	
33	237.6		Crack-Radial	2	0.002	2	0	0.002	
34	246.6		Crack-Radial	2	0.002	2	0	0.002	
35	248.1		Wye Service	1	0.000	0	0	0.000	
36	249.2		Crack-Radial	2	0.002	2	0	0.002	
37	250.6		Wye Service	3	0.000	2	0	0.000	
1741 W HARRISON / broken from main									
38	251.7		Crack-Radial	2	0.002	2	0	0.002	
39	257.1		Crack-Horizontal	2	0.002	2	0	0.002	
40	257.4		Crack-Radial	2	0.002	2	0	0.002	
41	263.8		Break-In Conn	2	0.002	0	0	0.002	
952 N COOLIDGE									
42	264.6		Crack-Radial	2	0.002	2	0	0.002	
43	267.0		Crack-Radial	3	0.004	5	0	0.004	
44	269.5		Broken Pipe	3	0.010	60	0	0.010	
45	272.7		Break-In Conn	4	0.008	60	0	0.008	
956 N COOLIDGE / protruding / cracked									
46	275.0		Crack-Radial	2	0.002	2	0	0.002	
47	276.0		Wye Service	1	0.000	0	0	0.000	
954 N COOLIDGE									
48	277.3		Crack-Radial	2	0.002	2	0	0.002	
49	278.6		Wye Service	2	0.000	0	0	0.000	
50	279.8		Broken Pipe	2	0.008	44	0	0.008	
51	282.2		Crack-Radial	2	0.002	2	0	0.002	
52	287.2		Crack-Radial	2	0.002	2	0	0.002	
53	292.1		Crack-Radial	3	0.004	5	0	0.004	
54	293.1		Break-In Conn	4	0.008	60	0	0.008	
945 N WOODROW									
55	294.6		Crack-Radial	2	0.002	2	0	0.002	
56	299.3		5348-100 DS Manhole	2	0.000	0	0	0.000	

Pipes don't line up going in and out of MH 5348-100. Leads not centered on the manhole wall.



Television Inspection Master Report

8/13/2010
1:27 PM

US Structure: 5348-100 962 N COOLIDGE ST Date Insp: 5/25/2010 Basin: C03E
 DS Structure: 5348-097 924 N COOLIDGE Dir Televised: Upstream To Downstream

Pipe Information

Project No. : B-222 Dia/Ht: 8 Material: VCP Length: 297.0 Tape ID: DVD #0585

Obs. #	VTR Counter	Distance	Location	Description	Rating	Ratings				
						Obsrvd (gpm)	Est. (gpm)	Struct	Clean	Remain (gpm)
1		0.0		5348-100 US Manhole	2					
2		5.1		Crack-Radial	2	0.002		2	0	0.002
3		6.3		Wye Service	1	0.000		0	0	0.000
4		7.3		Crack-Radial	2	0.002		2	0	0.002
5		8.7		Wye Service	1	0.000		0	0	0.000
6		9.7		Crack-Radial	3	0.004		5	0	0.004
7		12.3		Crack-Radial	3	0.004		5	0	0.004
8		15.0		Crack-Radial	2	0.002		2	0	0.002
9		15.7		Break-In Conn	3	0.004		2	0	0.004
950 N COOLIDGE										
10		17.2		Crack-Radial	2	0.002		2	0	0.002
11		19.8		Crack-Radial	2	0.002		2	0	0.002
12		22.2		Crack-Radial	2	0.002		2	0	0.002
13		24.8		Crack-Radial	2	0.002		2	0	0.002
14		27.4		Crack-Radial	2	0.002		2	0	0.002
15		28.8		Wye Service	1	0.000		0	0	0.000
16		31.4		Wye Service	1	0.000		0	0	0.000
17		32.5		Crack-Radial	2	0.002		2	0	0.002
18		34.1		Break-In Conn	4	0.008		60	0	0.008
943 N WOODROW / tap has broken pipe										
19		35.0		Crack-Radial	3	0.004		5	0	0.004
20		47.2		Crack-Radial	2	0.002		2	0	0.002
21		49.7		Crack-Radial	2	0.002		2	0	0.002
22		53.2		PVC Break-In Conn	1	0.001		0	0	0.001
944 N COOLIDGE										
23		54.7		Crack-Radial	2	0.002		2	0	0.002
24		56.2		Wye Service	1	0.000		0	0	0.000
25		57.1		Crack-Radial	2	0.002		2	0	0.002
26		62.1		Crack-Radial	2	0.002		2	0	0.002
27		64.7		Crack-Radial	2	0.002		2	0	0.002
28		67.2		Crack-Radial	2	0.002		2	0	0.002
29		72.1		Crack-Radial	2	0.002		2	0	0.002
30		74.5		Crack-Radial	2	0.002		2	0	0.002
31		78.7		Wye Service	1	0.000		0	0	0.000
32		81.2		Wye Service	1	0.000		0	0	0.000
33		84.7		Crack-Radial	2	0.002		2	0	0.002
34		87.0		Crack-Radial	2	0.002		2	0	0.002
35		89.6		Crack-Horizontal	2	0.002		2	0	0.002
36		92.0		Crack-Radial	2	0.002		2	0	0.002
37		94.5		Crack-Radial	2	0.002		2	0	0.002
38		95.1		Observation Hole	1	0.000		0	0	0.000
39		97.0		Crack-Radial	2	0.002		2	0	0.002



Television Inspection Master Report

8/13/2010
1:27 PM

US Structure:	5348-100	962 N COOLIDGE ST	Date Insp:	5/25/2010	Basin:	C03E
DS Structure:	5348-097	924 N COOLIDGE	Dir Televised:	Upstream To Downstream		
40	938 N COOLIDGE					
41	937 N WOODROW / Tap has been replaced "by others" since this televising					
42	932 N COOLIDGE / roots					
43	929 N WOODROW					
44	928 N COOLIDGE / Tap has been replaced "by others" since this televising					
45	927 N WOODROW / Tap has been replaced "by others" since this televising					
46	926 N COOLIDGE / roots					
47	925 N COOLIDGE / roots					
48	924 N COOLIDGE / roots					
49	923 N COOLIDGE / roots					
50	922 N COOLIDGE / roots					
51	921 N COOLIDGE / roots					
52	920 N COOLIDGE / roots					
53	919 N COOLIDGE / roots					
54	918 N COOLIDGE / roots					
55	917 N COOLIDGE / roots					
56	916 N COOLIDGE / roots					
57	915 N COOLIDGE / roots					
58	914 N COOLIDGE / roots					
59	913 N COOLIDGE / roots					
60	912 N COOLIDGE / roots					
61	911 N COOLIDGE / roots					
62	910 N COOLIDGE / roots					
63	909 N COOLIDGE / roots					
64	908 N COOLIDGE / roots					
65	907 N COOLIDGE / roots					
66	906 N COOLIDGE / roots					
67	905 N COOLIDGE / roots					
68	904 N COOLIDGE / roots					
69	903 N COOLIDGE / roots					
70	902 N COOLIDGE / roots					
71	901 N COOLIDGE / roots					
72	900 N COOLIDGE / roots					
73	899 N COOLIDGE / roots					
74	898 N COOLIDGE / roots					
75	897 N COOLIDGE / roots					
76	896 N COOLIDGE / roots					
77	895 N COOLIDGE / roots					



Television Inspection Master Report

8/13/2010
1:27 PM

US Structure: 5348-100 962 N COOLIDGE ST Date Insp: 5/25/2010 Basin: C03E
 DS Structure: 5348-097 924 N COOLIDGE Dir Televised: Upstream To Downstream

78	253.9	Break-In Conn	3	0.004	2	0	0.004
924 N COOLIDGE							
79	257.1	Wye Service	2	0.000	0	0	0.000
80	265.7	Crack-Radial	2	0.002	2	0	0.002
81	273.4	Crack-Radial	2	0.002	2	0	0.002
82	279.8	Wye Service	1	0.000	0	0	0.000
83	282.5	Wye Service	3	0.000	2	0	0.000
923 N WOODROW							
84	286.1	Crack-Radial	2	0.002	2	0	0.002
5348-097 DS Manhole							
85	293.4		3	0.000	0	0	0.000