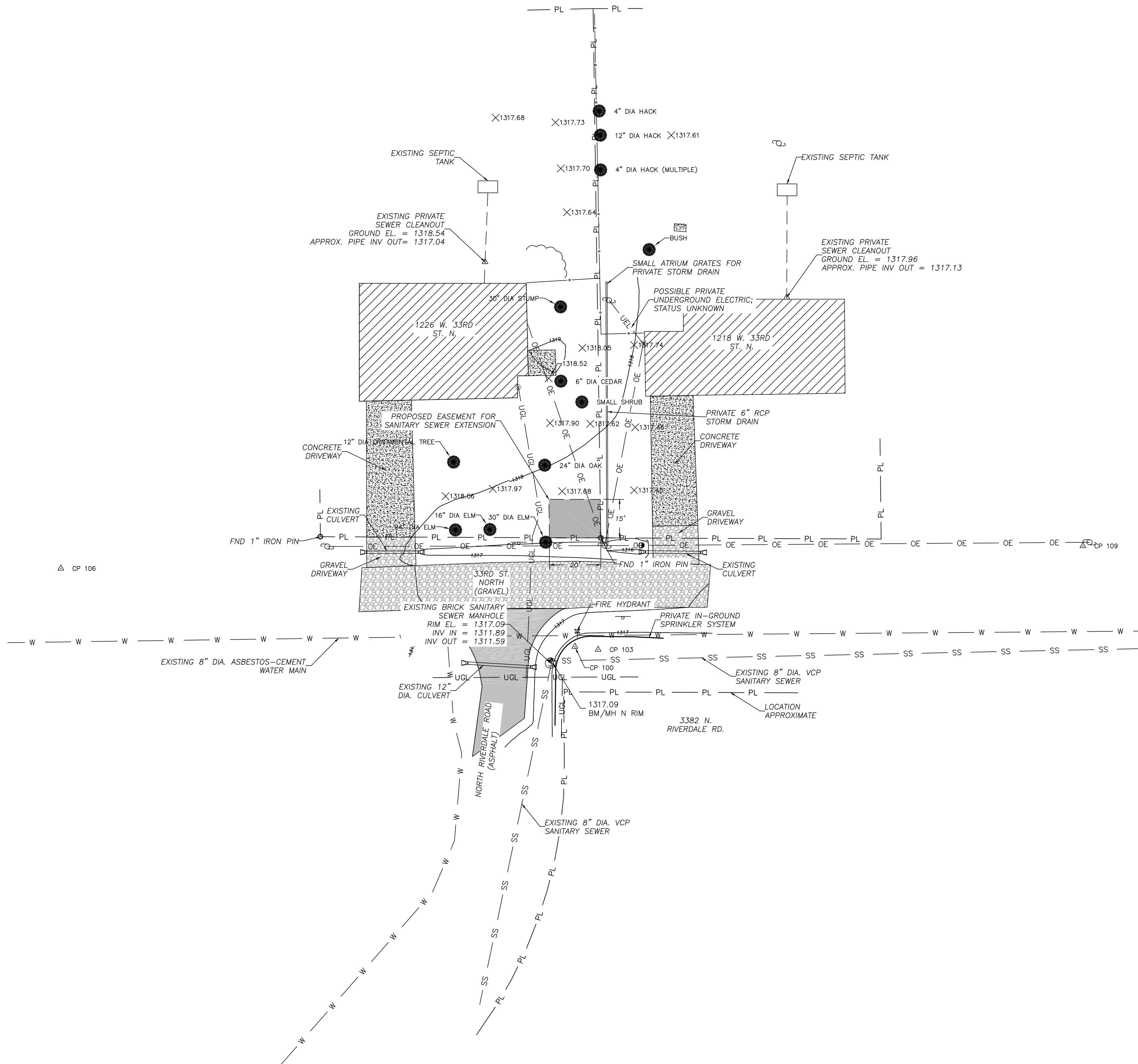


W:\CITY OF WICHITA\PROJECTS\5587.10 - SANITARY SEWER EXTENSION\DWGS\FIELD CHECK PLANS\FINAL PLANS\52 - SITE LAYOUT.DWG



LEGEND

- 1311 — EXISTING 1' CONTOUR
- 1310 — EXISTING 5' CONTOUR
- PL — APPROXIMATE PROPERTY BOUNDARY
- SS — SANITARY SEWER LINE (CITY OF WICHITA)
- UEL — PRIVATE UNDERGROUND ELECTRICAL LINE (SEE NOTE 5)
- — — PRIVATE SANITARY SEWER LINE
- OE — OVERHEAD ELECTRIC LINE (WESTAR ENERGY)
- UGL — UNDERGROUND GAS LINE (KANSAS GAS SERVICE)
- W — WATER LINE (CITY OF WICHITA)
- — — FENCE
- — — UNDERGROUND SPRINKLER LINE
- △ CONTROL POINT
- ◆ BENCHMARK
- × 1310.91 SPOT ELEVATION
- SANITARY MANHOLE
- PROPERTY CORNER
- TREE
- UTILITY POLE
- GUY WIRE
- SIGN
- TREE/LARGE SHRUB LINE

NOTES

1. EXISTING UTILITIES, PROPERTY IRONS, SECTION CORNERS, STRUCTURES, TOPOGRAPHY, AND OTHER FACILITIES SHOWN ON PLANS, EXCLUDING EXISTING CITY OF WICHITA WATER LINES AND SANITARY SEWER LINES BEYOND CONNECTION TO THE EXISTING MANHOLE STRUCTURE INDICATED, SURVEYED BY AQUATERRA ON SEPTEMBER 5, 2012.
2. EXISTING WATER LINE AND SANITARY SEWER PIPING BEYOND EXISTING MANHOLE IS APPROXIMATE AND BASED ON GIS DATA RECEIVED FROM CITY OF WICHITA, ON SEPTEMBER 19, 2012.
3. CONTRACTOR IS RESPONSIBLE FOR LOCATING AND PROTECTING EXISTING STRUCTURES AND UTILITIES. ANY DAMAGE TO EXISTING UTILITIES SHALL BE REPAIRED AT THE CONTRACTOR'S EXPENSE.
4. LOCATION OF THE PRIVATE UNDERGROUND ELECTRICAL LINE IDENTIFIED BY PRESENCE OF CONDUIT ON EXISTING PRIVATE LIGHT POLE AND EXISTING CONDUIT ON WEST SIDE OF 1218 WEST 33RD STREET NORTH IS APPROXIMATE. SERVICE AND FUNCTION OF THE LINE IS UNKNOWN BASED ON FIELD OBSERVATION.
5. CONTRACTOR SHALL BE AWARE OF PRIVATE UNDERGROUND SPRINKLER/IRRIGATION SYSTEM LOCATED ON 3382 N RIVERDALE RD AND TAKE NECESSARY MEASURES TO PROTECT EXISTING PRIVATE SPRINKLER SYSTEM. IF REMOVAL OF THE PRIVATE SPRINKLER SYSTEM IS REQUIRED TO ACCOMMODATE CONSTRUCTION OF THE 8-INCH SANITARY SEWER MAIN EXTENSION OR WATER MAIN RELOCATION, CONTRACTOR SHALL REPLACE AND RESTORE SPRINKLER SYSTEM TO ITS ORIGINAL CONDITION. COSTS FOR REPLACEMENT AND RESTORATION OF PRIVATE SPRINKLER SYSTEM SHALL BE SUBSIDIARY TO LUMP SUM COST OF WATER MAIN RELOCATION.

SURVEY CONTROL INFORMATION:

CONTROL POINT	NORTHING	EASTING	ELEVATION	DESCRIPTION
CP 100	1706949.97	1643172.54	1317.40	GPS BASE, STAMPED CONTROL POINT, SET 3/8" IRON BAR W/ CAP
CP 103	1706948.79	1643181.59	1317.53	STAMPED CONTROL POINT, SET 3/8" IRON BAR W/ CAP
CP 106	1706980.41	1642972.48	1317.68	STAMPED CONTROL POINT, SET 3/8" IRON BAR W/ CAP
CP 109	1706989.17	1643370.25	1317.85	STAMPED CONTROL POINT, SET 3/8" IRON BAR W/ CAP
TBM	1706944.63	1643163.27	1317.09	TEMPORARY BENCHMARK; MARKED NORTH SIDE OF EXISTING MANHOLE WITH "X"

BEARING & COORDINATES ESTABLISHED USING CITY OF WICHITA GPS NETWORK WHICH IS BASED OFF OF US STATE PLANE COORDINATES, NAD1983 SOUTH ZONE (1502).

AQUATERRA		ENVIRONMENTAL SOLUTIONS, INC.	11120 E. 26th Street North, Ste. 1100 Wichita, Kansas 67226
REV.	DATE	BY	DESCRIPTION
R6			
R5			
R4			
R3			
R2			
R1	9/28/12	JDN	FIELD CHECK PLANS

SITE LOCATION/CLIENT: 1218 & 1226 W. 33RD STREET N. WICHITA, KANSAS CITY OF WICHITA	PROJECT MGR.: JDN DATE: 10/31/12 DESIGNED BY: DMG DRAWN BY: DMG TELEPHONE FILE NAME: 5587.10 - SANITARY SEWER EXTENSION\DWGS\FIELD CHECK PLANS\FINAL PLANS\52 - SITE LAYOUT.DWG
--	---

SITE LAYOUT 8-INCH SANITARY SEWER EXTENSION	PROJECT NUMBER: 468-84840
SHEET 2 OF 13	DRAWING NUMBER: 2