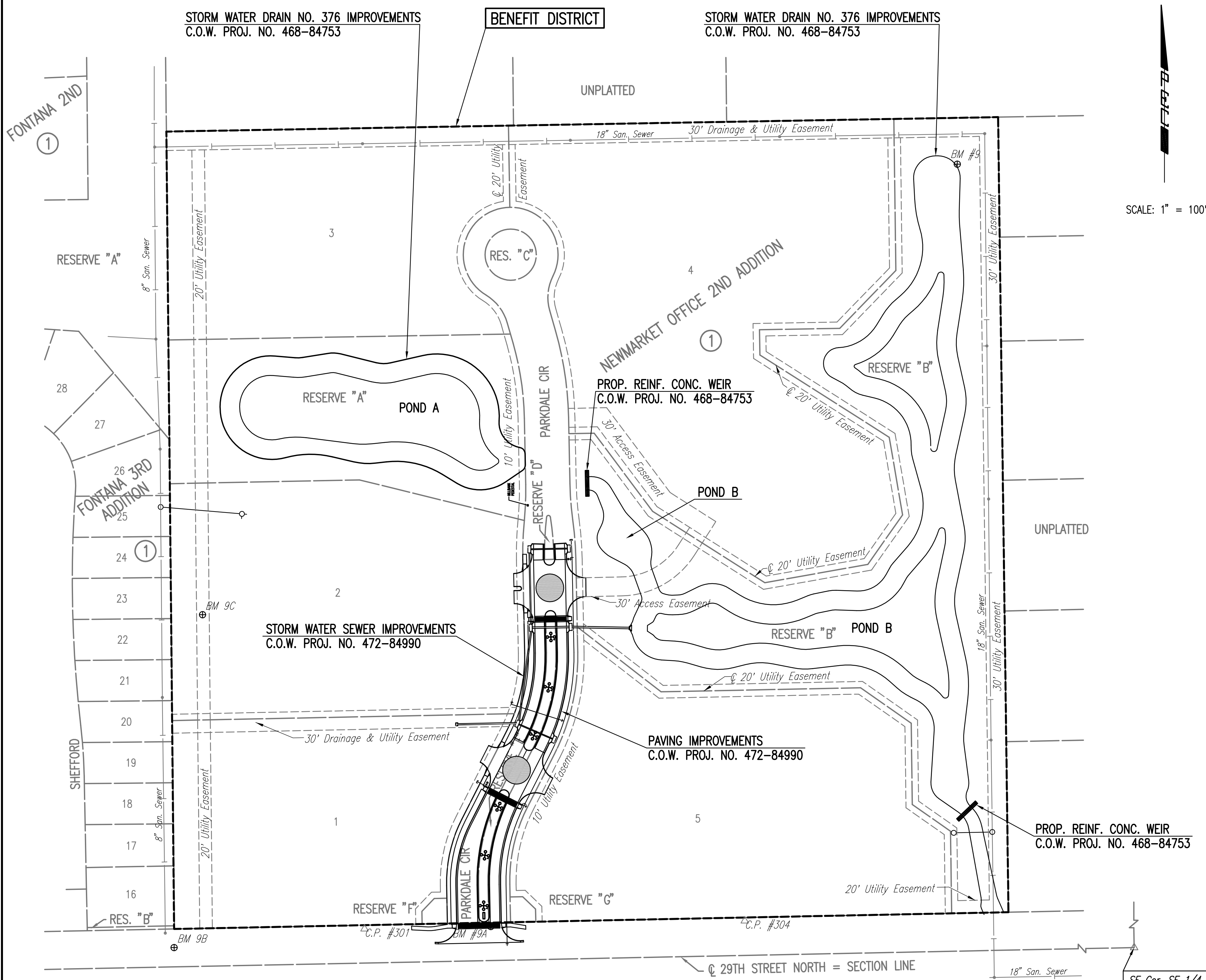


**GENERAL NOTES**

- ALL ELEVATIONS SHOWN ARE NAVD88. (NAVD88 -0.47' (0.143 METERS, PER VERTCON FROM NGS WEBSITE) TO NGVD29 - 1187.4=CITY DATUM).
- THE CONTRACTOR SHALL NOT START WORK ON THE PROJECT UNTIL THE PROJECT INSPECTOR IS ASSIGNED AND IS PRESENT ON THE SITE. ANY WORK DONE WITHOUT INSPECTION WILL BE REQUIRED TO BE UNCOVERED FOR INSPECTION.
- ALL CONSTRUCTION WORK AND MATERIAL IN THIS PROJECT SHALL COMPLY WITH CITY OF WICHITA STANDARD SPECIFICATIONS FOR THE CONSTRUCTION OF CITY PROJECTS UNLESS OTHERWISE NOTED IN THE PLANS OR SPECIAL PROVISIONS.
- UNDERGROUND UTILITY SERVICE LINES AND OVERHEAD UTILITY POLE LINES ARE TO BE ADJUSTED AS NECESSARY BY OTHERS PRIOR TO CONSTRUCTION UNLESS THE PLANS SPECIFICALLY CALL FOR THEIR ADJUSTMENT BY THE CONTRACTOR. EXISTING UTILITIES AND THEIR LOCATION, AS SHOWN ON THE PLANS, REPRESENT THE BEST INFORMATION OBTAINABLE FOR DESIGN. LOCATION INFORMATION HAS BEEN OBTAINED FROM THE VARIOUS UTILITY COMPANIES AND IS EITHER FROM COMPANY RECORD DRAWINGS OR COMPANY PROVIDED FIELD LOCATIONS. THE CONTRACTOR WILL BE REQUIRED TO WORK AROUND EXISTING UTILITIES WITHIN THE RIGHT-OF-WAY WHICH DO NOT CONFLICT WITH PROPOSED CONSTRUCTION.
- TREES AND SHRUBS IN PUBLIC RIGHT-OF-WAY WHICH ARE IN DIRECT CONFLICT WITH PROPOSED NEW CONSTRUCTION SHALL BE REMOVED BY THE CONTRACTOR WITH THE ENGINEER'S APPROVAL. TREES AND SHRUBS WHICH ARE NOT IN DIRECT CONFLICT WITH PROPOSED NEW CONSTRUCTION SHALL BE SAVED AND PROTECTED FROM DAMAGE.
- RUBBLE FROM THE REMOVAL OF MISCELLANEOUS STRUCTURES SHALL BE DISPOSED OF ON SITES TO BE PROVIDED BY THE CONTRACTOR AND APPROVED AS NOTED BELOW.  
  
ALL DISPOSAL SITES MUST BE APPROVED BY THE KANSAS DEPARTMENT OF HEALTH AND ENVIRONMENT. MATERIAL EITHER STOCKPILED OR DISPOSED OF IN A FLOOD PLAIN WOULD REQUIRE A KANSAS STATE BOARD OF AGRICULTURE PERMIT. ANY MATERIAL DUMPED IN WATERS OF THE UNITED STATES OR WETLANDS IS SUBJECT TO U.S. CORPS OF ENGINEERS PERMITTING REGULATIONS. ANY MATERIAL BURIED OR STOCKPILED BEYOND APPROVED CONSTRUCTION LIMITS WOULD REQUIRE ADDITIONAL ARCHEOLOGICAL INVESTIGATIONS UNLESS BURIED IN A PREVIOUSLY APPROVED BORROW LOCATION.
- EACH BIDDER SHALL VISIT THE SITE OF THE PROJECT BEFORE SUBMITTING THE PROPOSAL FOR THIS WORK SO THAT HE WILL BE FULLY INFORMED OF THE EXISTING FIELD CONDITIONS AND THE OBSTACLES WHICH MIGHT BE ENCOUNTERED. UPON AWARD OF THE CONTRACT THE CONTRACTOR WILL NOT BE GRANTED ANY ADDITIONAL COMPENSATION WITH REGARDS TO TIME AND MONEY FOR CONDITIONS THAT MAY HAVE BEEN EVALUATED DURING ANY INSPECTION OF THE SITE.
- FIELD LOCATE ALL EXISTING UTILITIES PRIOR TO BEGINNING ANY EXCAVATION WORK. CONTACT THE KANSAS-ONE-CALL SYSTEM AT (316) 687-2470 AT LEAST 72 HOURS IN ADVANCE TO REQUEST FIELD LOCATES. FOR UTILITIES THAT ARE NOT MEMBERS OF THE KANSAS-ONE-CALL SYSTEM, CONTACT THOSE COMPANIES DIRECTLY.
- THE LUMP SUM BID ITEM "SITE RESTORATION" SHALL INCLUDE, BUT NOT BE LIMITED TO MOBILIZATION, REMOVAL OF MINOR OBSTRUCTIONS, REMOVAL AND SALVAGE OF CONFLICTING PRIVATE IMPROVEMENTS WITHIN THE PROJECT AREA, MINOR SHAPING AND GRADING OF SLOPES FOR FINISHED APPEARANCE, REMOVAL OF CONSTRUCTION DEBRIS, REMOVAL OF TREES WITHIN CONSTRUCTION LIMITS, AND GENERAL CLEAN-UP.
- THE CONTRACTOR SHALL BE RESPONSIBLE FOR PRESERVING PROPERTY IRONS. THE CONTRACTOR WILL BE REQUIRED TO RE-ESTABLISH ANY PROPERTY IRONS WHICH ARE DAMAGED OR DESTROYED BY HIS CONSTRUCTION OPERATIONS, OR WHICH ARE COVERED BY 12" OR MORE OF FILL MATERIAL BY THIS PROJECT. SUCH IRONS SHALL BE RE-ESTABLISHED BY A LICENSED LAND SURVEYOR IN ACCORDANCE WITH STATE LAWS AND AT NO ADDITIONAL COST TO THE CITY.
- THE CONTRACTOR SHALL APPLY TEMPORARY SEED AND MULCH TO ALL UNPAVED AREAS DISTURBED BY HIS CONSTRUCTION OPERATIONS WITHIN 14 DAYS AFTER SUCH OPERATIONS CEASE IN ACCORDANCE WITH THE STANDARD SPECIFICATIONS. SEED SHALL BE ANNUAL RYE APPLIED AT THE RATE OF 4 LBS. PER 1,000 SQUARE FEET. MULCH SHALL BE PRAIRIE HAY APPLIED AT THE RATE OF 15 BALES PER ACRE. THIS WORK SHALL BE PAID FOR AT THE CONTRACT LUMP SUM PRICE BID FOR "TEMPORARY PROJECT SEEDING".
- EROSION CONTROL (BMP'S)  
THE CONTRACTOR SHALL INSTALL AND/OR MAINTAIN EROSION CONTROL METHODS AS SPECIFIED ON THE EROSION CONTROL PLAN CONTAINED HEREIN. THE FOLLOWING QUANTITIES ARE ESTIMATED, AND SHOULD BE CONSIDERED THE MINIMUM EFFORT REQUIRED. INSTALLATION OF THESE BMP'S DOES NOT RELIEVE THE CONTRACTOR OF THE RESPONSIBILITY OF ABATING SOIL EROSION.  
  
CURB INLET PROTECTION 6 EACH  
AREA INLET PROTECTION 1 EACH  
BACK OF CURB PROTECTION 1,190 L.F.
- THE CONTRACTOR SHALL GIVE ALL PROPERTY OWNERS AND/OR TENANTS OF DEVELOPED PROPERTY ADJUTING THE CONSTRUCTION OF THIS PROJECT A MINIMUM OF 10 DAYS ADVANCE NOTICE PRIOR TO START OF CONSTRUCTION IN THE VICINITY OF THE AFFECTED PROPERTY.
- THE CONTRACTOR SHALL REMOVE EXISTING ROAD SIGNS THAT INTERFERE WITH CONSTRUCTION. SIGNS DAMAGED THRU NEGLIGENCE OF THE CONTRACTOR SHALL BE REPLACED BY THE CONTRACTOR AT NO COST TO THE CITY. THE CONTRACTOR SHALL STOCKPILE THE SIGNS ALONG THE R/W (AT A CENTRAL LOCATION) FOR REMOVAL BY CITY FORCES.
- CONTRACTOR SHALL SUPPLY, INSTALL, AND MAINTAIN CONSTRUCTION TRAFFIC CONTROL AS NECESSARY TO PROTECT THE TRAVELING PUBLIC. ALL TRAFFIC CONTROL DEVICES, AND THE INSTALLATION AND USE THEREOF, SHALL CONFORM TO THE REQUIREMENTS OF THE MANUAL ON UNIFORM TRAFFIC CONTROL DEVICES (MUTCD), LATEST EDITION. ALL DEVICES SHALL BE REFLECTORIZED. CONSTRUCTION TRAFFIC CONTROL SHALL BE SUBSIDIARY TO OTHER BID ITEMS OF WORK.
- WATER FOR EARTHWORK SHALL BE CONSIDERED SUBSIDIARY TO "UNCLASSIFIED EXCAVATION".
- PRIOR TO CONSTRUCTION, THE CONTRACTOR SHALL RE-ESTABLISH CONTROL POINTS AND BENCH MARKS AND VERIFY THEIR ACCURACY.
- INLET HOOKUPS AND INLET PROTECTION SHALL BE BID PER EACH REGARDLESS OF INLET SIZE.
- CONTRACTOR SHALL PROVIDE A FULL DEPTH SAW CUT AT THE LIMITS OF CONSTRUCTION.
- EASEMENTS AND RIGHTS-OF-WAY PROVIDED BY THE OWNER FOR THE PROJECT ARE SHOWN ON THE PLANS. THE CONTRACTOR SHALL BE RESPONSIBLE FOR THE ACQUISITION OF ANY ADDITIONAL TEMPORARY EASEMENTS OR RIGHTS-OF-WAY THAT HE DESIRES TO USE IN COMPLETING THE WORK.
- THE CONTRACTOR SHALL MAKE EVERY REASONABLE EFFORT TO SCHEDULE EARTHWORK, PARTICULARLY CURB BACKFILL, TO BE COMPLETED PRIOR TO PLACEMENT OF THE FINAL SURFACE COURSE. THE CONTRACTOR SHALL PROTECT COMPLETED SURFACE COURSE FROM SOILS AND OTHER MATERIALS WHICH COULD PRODUCE SURFACE DAMAGE OR BLEMISHES. DAMAGE AND BLEMISHES RESULTING FROM THE CONTRACTOR'S ACTIVITIES SHALL BE REPAIRED BY APPROPRIATE METHODS, AS APPROVED BY THE CITY, AT THE SOLE EXPENSE OF THE CONTRACTOR.
- THE CONTRACTOR SHALL EXERCISE EXTREME CAUTION UPON EXCAVATING OVER OR IN THE PROXIMITY OF EXISTING WATER MAINS AND SERVICES. CONTRACTOR SHALL PROTECT SAID WATER MAINS AND SERVICES FROM DAMAGE. ANY REPAIRS RESULTING FROM PROJECT CONSTRUCTION SHALL BE THE RESPONSIBILITY OF THE CONTRACTOR AT NO ADDITIONAL COST BY OWNER.

SCALE: 1" = 100'



SE Cor. SE 1/4 Sec. 31, T26S, R1W

**CONTROL POINTS**

- Pt. No. 301  
N-25,274.497856, E-17,660.897304  
#4 REBAR  
1. 0.2' N. TO SOUTH EDGE OF SIDEWALK ON NORTH SIDE OF 29TH NORTH OF EAST END OF 12 ROW OF MAPLE TREES  
2. 180' N. TO CENTERLINE OF CURB ISLAND SOUTH, 29TH AND PARKDALE
- Pt. No. 304  
N-25,287.2755, E-18,262.727002  
#4 REBAR AT NORTH EDGE OF SIDEWALK ON NORTH SIDE OF 29TH  
1. 0.1' E. OF CONCRETE JOINT IN SIDEWALK NORTH OF WEST END OF ROW OF MAPLE TREES  
2. ±400' E. TO RCBC AT SOUTHEAST CORNER OF PLAT
- Pt. No. 305  
N-25,157.815546, E-17,846.590275  
#4 REBAR  
1. 3.5' N. TO BACK OF CURB AT NORTH END OF CURB ISLAND IN CENTERLINE OF PARKDALE AND SOUTH SIDE OF 29TH STREET  
2. 2.8' S. TO CENTER OF TRAFFIC SIGN POST

SEE IRRIGATION PLAN FOR ADDITIONAL INFORMATION

SEE SHEET NO. 3 & 4 FOR PLAT COORDINATES

**BENCHMARK LIST**

- BM #9 - T-POST 70' +/- W AND 75' S OF THE NE CORNER, SW 1/4, SE 1/4, SEC. 31, T26S, R1W. ELEV. 1351.58 (NAVD 88)
- BM #9A - CHISELED "d" AT THE NE CORNER OF THE CONCRETE DRIVE APPROACH, ON THE S SIDE OF THE SIDEWALK ON THE N SIDE OF 29TH STREET N, AT THE INTERSECTION OF 29TH AND PARKDALE. ELEV. 1359.26 (NAVD 88)
- BM #9B - SET CHISELED "d" AT THE TOP OF THE CURB ON THE N CURB OF 29TH STREET N, ADJACENT TO THE S 1/4 COR. 31-T26S-R1W. ELEV. 1365.00 (NAVD 88)
- BM #9C - SET "t" POST AT THE E TOE OF THE BERM. ELEV. 1358.00 (NAVD 88)

No.	Revision	By	Date
NEWMARKET OFFICE 2ND PAVING AND INCIDENTAL DRAINAGE IMPROVEMENTS			
<b>KEY MAP AND GENERAL NOTES</b>			
GARY JANZEN, P.E. - CITY ENGINEER CITY OF WICHITA PROJ. NO. 472-84990			
<b>PEC</b> PROFESSIONAL ENGINEERING CONSULTANTS, P.A. 303 SOUTH TOPEKA WICHITA, KS 67202 316-262-2691 www.pec1.com			
Designed by	BMM, JAG	Job No.	35-11114-000
Drawn by	BJS	Date	July 2011
			Sht. 2 of 31

Served 12-01-2012 4:45:02 PM by BJS  
 Plot Scale 1:100 12-01-2012 5:33:53 PM by BJS  
 G:\2011\1114\000\1114-000-C02-Key Map