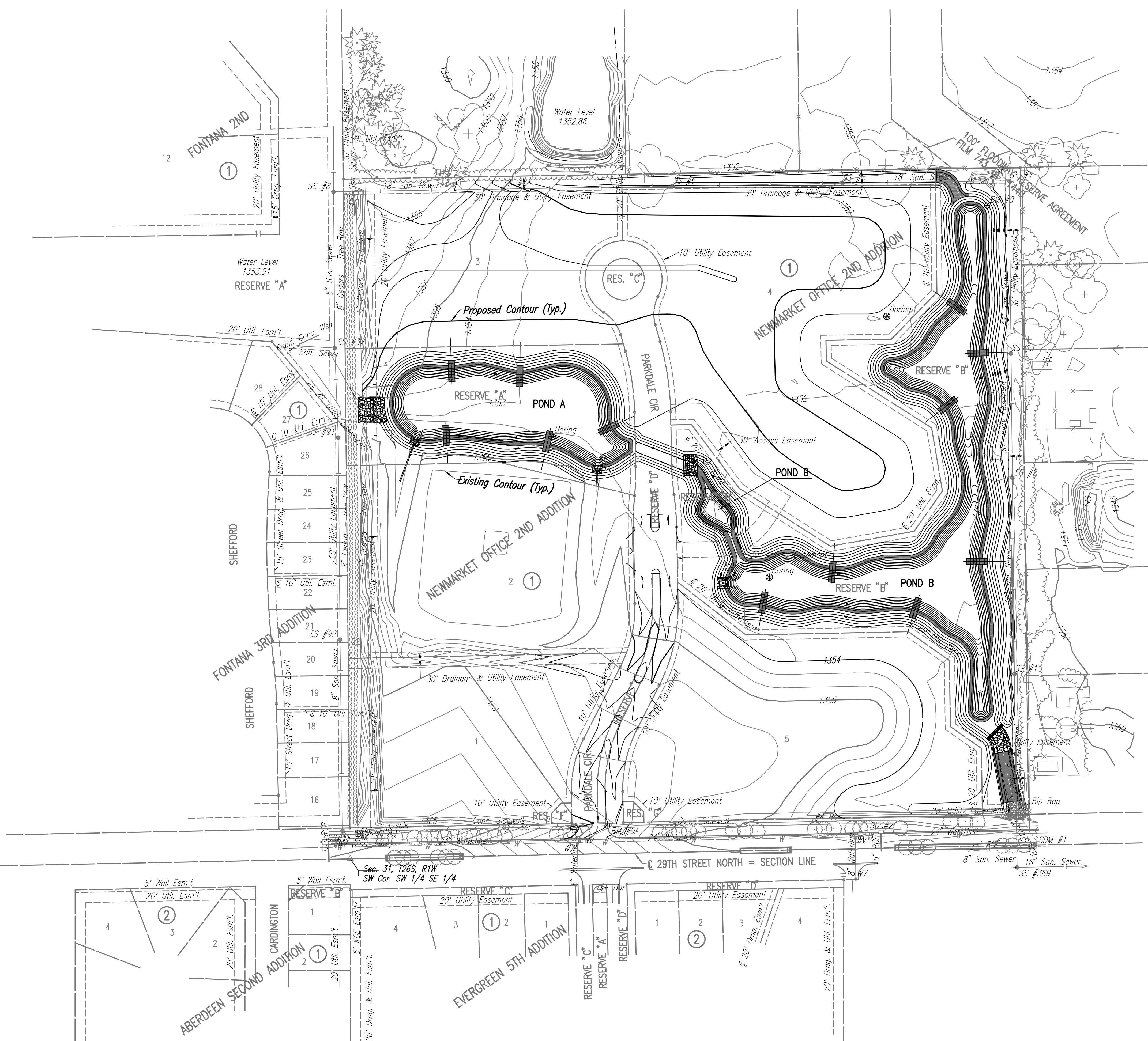


LEGEND

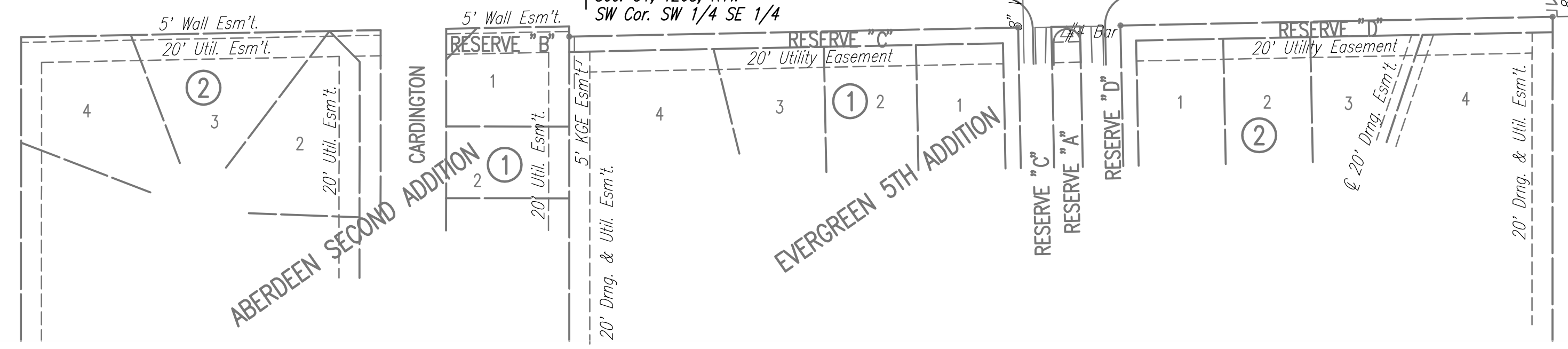
- PROPOSED CONTOUR
- - - EXISTING CONTOUR

CONTOUR INTERVAL: 1 FOOT



SEE PHASE 1 STORM WATER DRAIN PLANS FOR ADDITIONAL GRADING REQUIREMENTS.
 PEC PROJECT NO. 35-11114-003-042
 CITY OF WICHITA PROJECT NO. 468-84753

Sowed 11-15-2012 11:06:21 AM By BJS
 Plot Scale: 1:100 12-21-2012 5:37:47 PM By BILL J. SEKSON
 G:\2011\11114\000\11114-000-CSC-SITE GRADING PLAN



No.	Revision	By	Date

NEWMARKET OFFICE 2ND
 PAVING AND INCIDENTAL DRAINAGE IMPROVEMENTS
SITE GRADING PLAN
 (FOR INFORMATION ONLY)
 GARY JANZEN, P.E. - CITY ENGINEER
 CITY OF WICHITA PROJ. NO. 472-84990


PEC PROFESSIONAL ENGINEERING CONSULTANTS, P.A.
 303 SOUTH TOPEKA WICHITA, KS 67202
 316-262-2691 www.pec1.com

Designed by	BMM, JAG	Job No.	35-11114-000	Sht. 5 of 31
Drawn by	BJS	Date	July 2011	