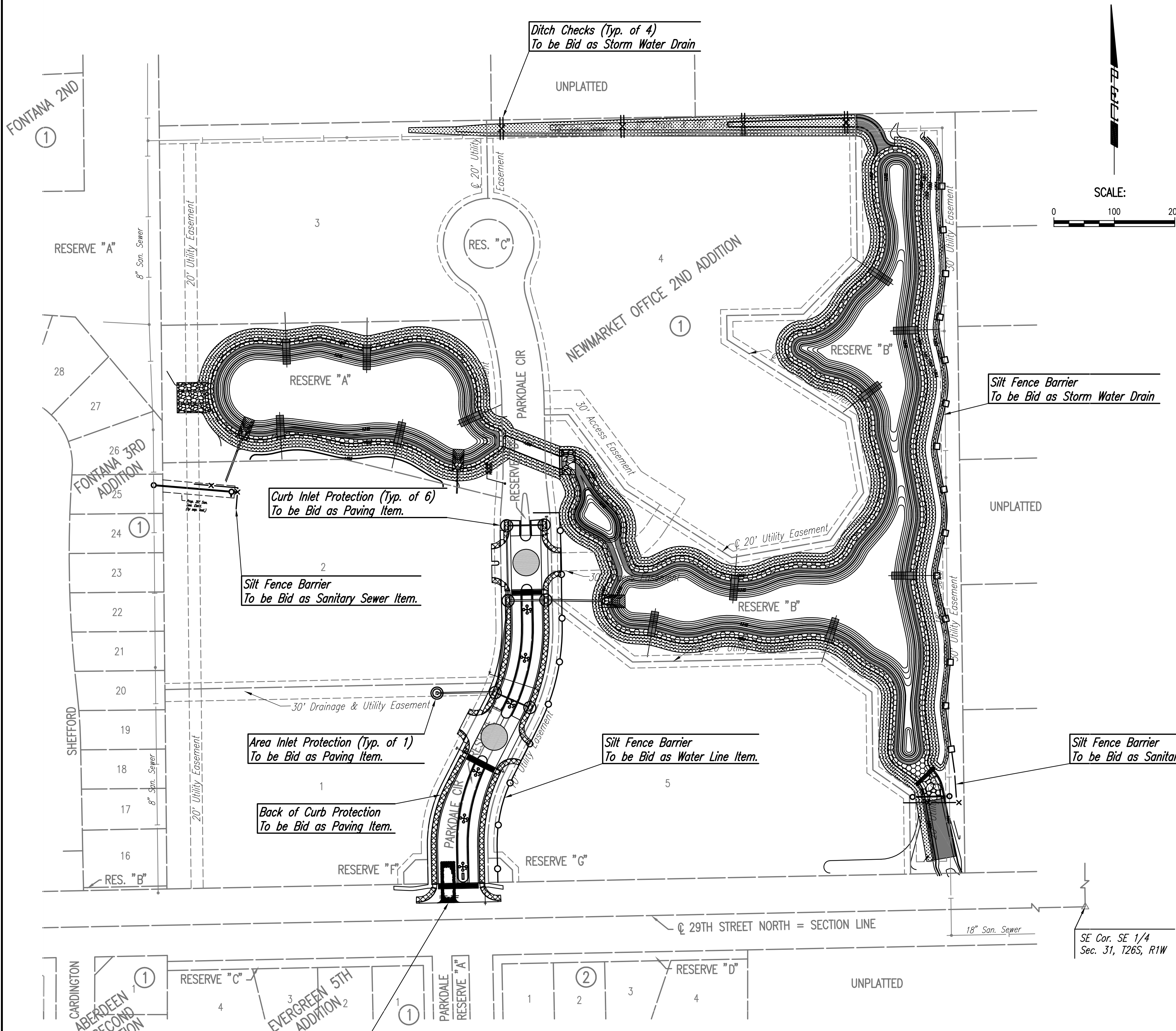


Served 12-20-2012 1:55:08 PM by BJS
 Plot Scale 1:100 12-21-2012 6:02:57 PM by BJS
 G:\2011\1114\000\1114-000-21C-EROSION CONTROL PLAN



GENERAL NOTES

- CONTRACTOR SHALL INSTALL AND MAINTAIN EROSION PROTECTION THROUGHOUT THE ENTIRE PROJECT. THE FOLLOWING QUANTITIES ARE FOR INFORMATION ONLY, AND SHALL BE INCLUDED IN THE EROSION CONTROL LUMP SUM BID ITEMS FOR EACH RESPECTIVE PART. EROSION PROTECTION SHALL BE INCLUDED IN THE BID AS FOLLOWS:
- THE EROSION CONTROL DEVICES SHOWN ON THIS SHEET ARE CONSIDERED MINIMUM STANDARDS. WHENEVER SEDIMENT ENTERS THE STREETS, STORM SEWERS, DITCHES, OR PONDS, CONTRACTOR WILL INSTALL ADDITIONAL DEVICES, AS NEEDED, TO CORRECT THE PROBLEM.
- THE EROSION CONTROL DEVICES SHOWN HEREON MUST BE IN PLACE AT ALL TIMES DURING CONSTRUCTION UNTIL SUCH TIME AS THE SITE IS REESTABLISHED WITH PAVING OR GRASS. TEMPORARY OR PERMANENT SEEDING AND MULCH WILL BE INSTALLED WHEN EARTHWORK ACTIVITIES CEASE IN AN AREA FOR 14 DAYS OR MORE.
- ANY MUD INADVERTENTLY TRACKED ONTO ANY STREET SHALL BE CLEANED UP BY THE CONTRACTOR, AT THE END OF EACH DAY'S WORK, OR AS DIRECTED BY THE FIELD ENGINEER.
- CONTRACTOR TO FURNISH A TRUCK WASH-OUT PIT TO BE PLACED AT A CONVENIENT LOCATION THAT DOES NOT CONFLICT WITH CONSTRUCTION. CONTRACTOR SHALL CLEAN OUT AND BACKFILL PIT PRIOR TO FINAL INSPECTION. LOCATION SHALL BE APPROVED BY THE FIELD ENGINEER.

SANITARY SEWER	
SILT FENCE BARRIER	245 L.F.
WATER LINE	
SILT FENCE BARRIER	675 L.F.
PAVING AND DRAINAGE	
CURB INLET PROTECTION	6 EACH
AREA INLET PROTECTION	1 EACH
BACK OF CURB PROTECTION	1,190 L.F.
STORM WATER DRAIN	
SILT FENCE BARRIER	1,070 L.F.
STABILIZED CONSTRUCTION ENTRANCE	1 EACH
DITCH CHECKS	4 EACH

LEGEND

	SILT FENCE (TO BE BID WITH STORM WATER DRAIN PROJECT)
	SILT FENCE (TO BE BID WITH WATER LINE PROJECT)
	SILT FENCE (TO BE BID WITH SANITARY SEWER PROJECT)
	DITCH CHECKS (STORM WATER DRAIN)
	STABILIZED CONSTRUCTION ENTRANCE
	TURF REINFORCEMENT MAT
	BACK OF CURB PROTECTION
	SLOPE PROTECTION RIPRAP STONE (5' x 9')
	BIODEGRADABLE ECB
	PROPOSED WATER MAIN
	PROPOSED SANITARY SEWER w/MANHOLE
	PROPOSED STORM WATER SEWER
	PROPOSED CURB INLET PROTECTION
	PROPOSED AREA INLET PROTECTION

Stabilized Construction Entrance (Typ. of 1)
To be Bid as Storm Water Drain Item.

No.	Revision	By	Date
NEWMARKET OFFICE 2ND PAVING AND INCIDENTAL DRAINAGE IMPROVEMENTS EROSION CONTROL PLAN GARY JANZEN, P.E. - CITY ENGINEER CITY OF WICHITA PROJ. NO. 472-84990			
PROFESSIONAL ENGINEERING CONSULTANTS, P.A. 303 SOUTH TOPEKA WICHITA, KS 67202 316-262-2691 www.pec1.com			
Designed by	BMM, JAG	Job No.	35-11114-000
Drawn by	BJS	Date	July 2011
			Sht. 21 of 31