

NOTE: ZONES 12-14 ARE TO BE EXPANDED IN THE FUTURE PHASE.

ZONE 11	1804-PRS-08Q = 12 1804-PRS-08H = 40
24 1 1/2" GPM VALVE (1 1/2" LATERAL)	
ZONE 5-B	1806-PRS-08Q = 8 1806-PRS-08H = 13 1806-PRS-08F = 3
12 1" GPM VALVE	
ZONE 10	1804-PRS-15Q = 4 1804-PRS-15H = 20
40.1 2" GPM VALVE	
ZONE 9	1804-PRS-15Q = 2 1804-PRS-15H = 14
27.8 1 1/2" GPM VALVE (1 1/2" LATERAL)	
ZONE 8	1804-PRS-15Q = 5 1804-PRS-15H = 18
37.9 2" GPM VALVE (2" LATERAL)	
ZONE 14	1804-PRS-08Q = 3 1804-PRS-08H = 2
1.9 1 1/2" GPM VALVE	
ZONE 13	1806-PRS-08Q = 2 1806-PRS-08H = 8 1806-PRS-08F = 3
7.9 1" GPM VALVE	
ZONE 12	1804-PRS-15Q = 3 1804-PRS-15H = 5
12.1 1 1/2" GPM VALVE	

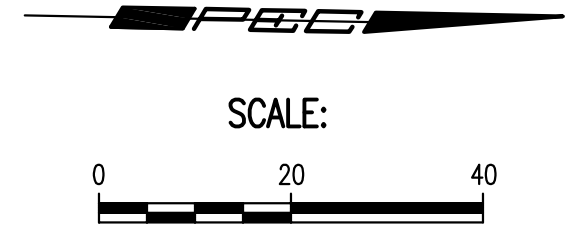
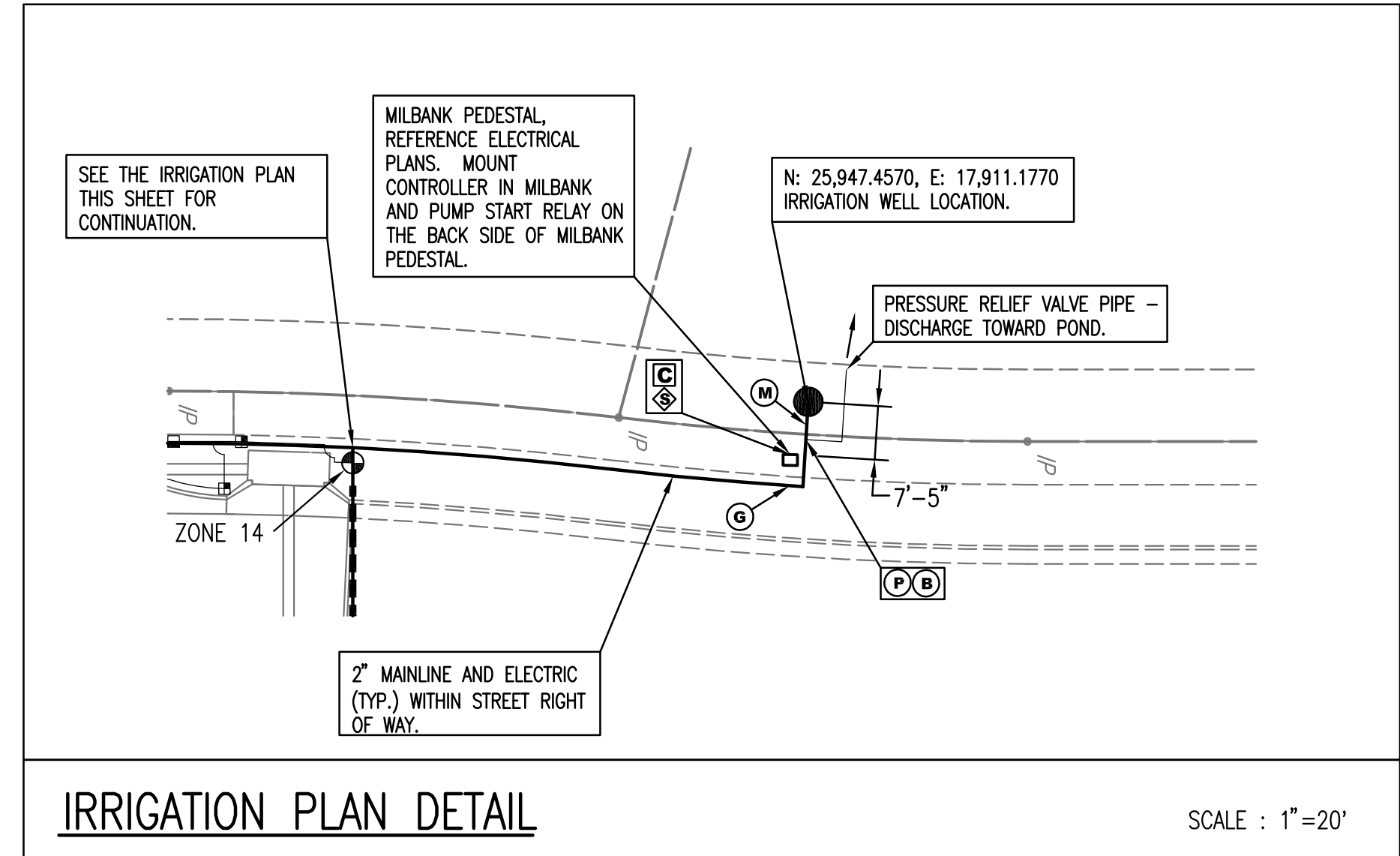
ZONE 6	1804-PRS-10Q = 7 1804-PRS-10H = 22 1804-PRS-10F = 4
26.5 1 1/2" GPM VALVE (1 1/2" LATERAL)	
ZONE 1-B	1806-PRS-08Q = 7 1806-PRS-08H = 17 1806-PRS-08F = 8
19.1 1 1/2" GPM VALVE (1 1/2" LATERAL)	
ZONE 2	1804-PRS-10Q = 5 1804-PRS-10H = 23 1804-PRS-10F = 4
26.5 1 1/2" GPM VALVE (1 1/2" LATERAL)	
ZONE 1-A	1806-PRS-08Q = 3 1806-PRS-08H = 13 1806-PRS-08F = 11
19.1 1 1/2" GPM VALVE (1 1/2" LATERAL)	
ZONE 7	1804-PRS-08Q = 7 1804-PRS-08H = 46
25.8 1 1/2" GPM VALVE (1 1/2" LATERAL)	
ZONE 5-A	1806-PRS-08Q = 9 1806-PRS-08H = 14 1806-PRS-08F = 1
10.7 1" GPM VALVE (2" LATERAL)	
ZONE 4	1804-PRS-15Q = 4 1804-PRS-15H = 18
37 2" GPM VALVE (2" LATERAL)	
ZONE 3	1804-PRS-15Q = 7 1804-PRS-15H = 21
45.3 2" GPM VALVE (2" LATERAL)	

IRRIGATION QUANTITIES (FOR INFORMATION ONLY)
 THE LUMP SUM BID ITEM FOR "IRRIGATION SYSTEM" SHALL INCLUDE THE FOLLOWING ITEMS ALONG WITH INCIDENTAL ITEMS NECESSARY FOR THE SYSTEM (INCLUDING FITTINGS, GRAVEL, ETC.):

SYMBOL	ITEM	QUANTITY	UNITS	NOTES
—	2" PVC MAIN LINE	1000	LF	SCHEDULE 40 PVC
—	2-WIRE CONTROL WIRE	1000	LF	14 GA. MAXI-COM WITH MAIN LINE.
—	SLEEVES			REFERENCE PAVING PLAN SHEET 7 FOR IRRIGATION SLEEVES
■	1804-PRS TURF SPRAYS	309	EA.	RAINBIRD 1804-PRS SPRAY HEADS OR APPROVED EQUAL.
▲	1806-PRS SHRUB SPRAYS	120	EA.	RAINBIRD 1806-PRS SPRAY HEADS OR APPROVED EQUAL.
ⓐ	IRRIGATION CONTROLLER	1	EA.	MOUNT ON BACK OF MILBANK PEDESTAL.
ⓑ	RAIN SENSOR	1	EA.	MOUNT ON MILBANK PEDESTAL.
ⓓ	METER	1	EA.	INSTALL USAGE METER PER KDHE AND GMD2 REQUIREMENTS.
ⓔ	8" GROUND RODS	2	EA.	
ⓖ	PRESSURE RELIEF VALVE	1	EA.	DISCHARGE 10' FROM WELL TO POND.
ⓗ	BLOW OUT	1	EA.	INSTALL IN "JUMBO VALVE BOX" WITH SERVICE VALVE
ⓙ	1" CONTROL VALVE	3	EA.	WITH DECODER : SIZE NOTED IN ZONE DESCRIPTION BOX ON PLAN.
ⓚ	1 1/2" CONTROL VALVE	9	EA.	WITH DECODER : SIZE NOTED IN ZONE DESCRIPTION BOX ON PLAN.
ⓛ	2" CONTROL VALVE	4	EA.	WITH DECODER : SIZE NOTED IN ZONE DESCRIPTION BOX ON PLAN.
ⓓ	10" ROUND VALVE BOX	16	EA.	ONE CONTROL VALVE PER BOX
ⓔ	"JUMBO VALVE BOX"	1	EA.	FOR PRESSURE RELIEF VALVE AND BLOW OUT
—	1" LATERAL PIPE	4130	LF	AS SHOWN ON PLAN AND PER PIPE FLOW CHART IN SPECIFICATIONS.
—	1 1/2" LATERAL PIPE	440	LF	AS SHOWN ON PLAN AND PER PIPE FLOW CHART IN SPECIFICATIONS.
—	2" LATERAL PIPE	40	LF	AS SHOWN ON PLAN AND PER PIPE FLOW CHART IN SPECIFICATIONS.

SYMBOL	ITEM	QUANTITY	UNITS
Ⓜ	WELL (PROP. DEPTH 130')	1	EA.
	7.5 HP PUMP	1	EA.
	PUMP START RELAY	1	EA.

NOTES:
 1. THE IRRIGATION CONTRACTOR SHALL COORDINATE INSTALLATION OF SLEEVES SHOWN ON THE PAVING PLAN WITH THE GENERAL CONTRACTOR.
 2. USE CAUTION WHEN NEAR OR CROSSING STORM SEWER LINES, WATERLINES, ELECTRICAL SERVICE AND LIGHTING LINES.
 3. REFERENCE THE ELECTRICAL PLANS FOR PROPOSED LIGHT POLES AND ELECTRICAL DETAILS.



No.	Revision	By	Date
NEWMARKET OFFICE 2ND PAVING AND INCIDENTAL DRAINAGE IMPROVEMENTS IRRIGATION PLAN GARY JANZEN, P.E. - CITY ENGINEER CITY OF WICHITA PROJ. NO. 472-84990 PROFESSIONAL ENGINEERING CONSULTANTS, P.A. 303 SOUTH TOPEKA WICHITA, KS 67202 316-262-2691 www.pec1.com			
Designed by	BMM, JAG	Job No.	35-11114-000
Drawn by	BJS	Date	July 2011
			Sht. 31 of 31

Sowed 12-01-2012 4:40:48 PM by BJS
 Plot Scale 1:20 12-01-2012 6:12:54 PM by BJS
 G:\2011\1114\000\1114-000-31C-IRRIGATION PLAN-PARKDALE CIRCLE