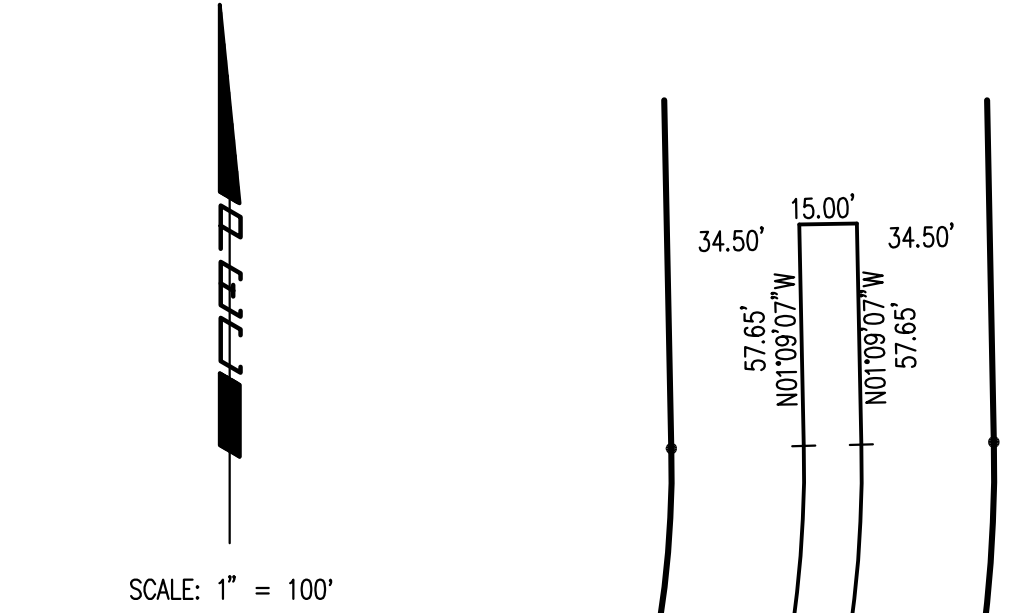
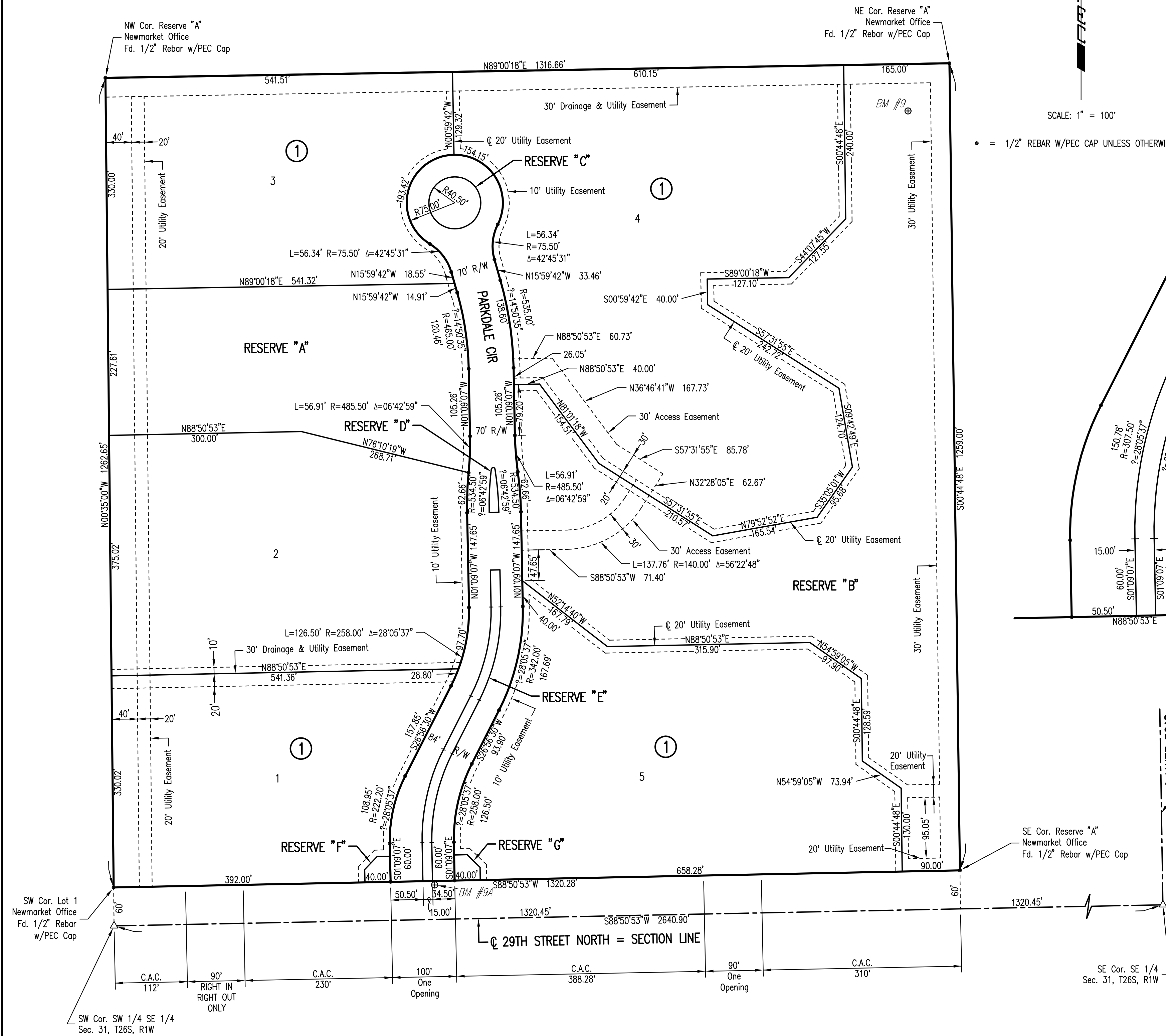
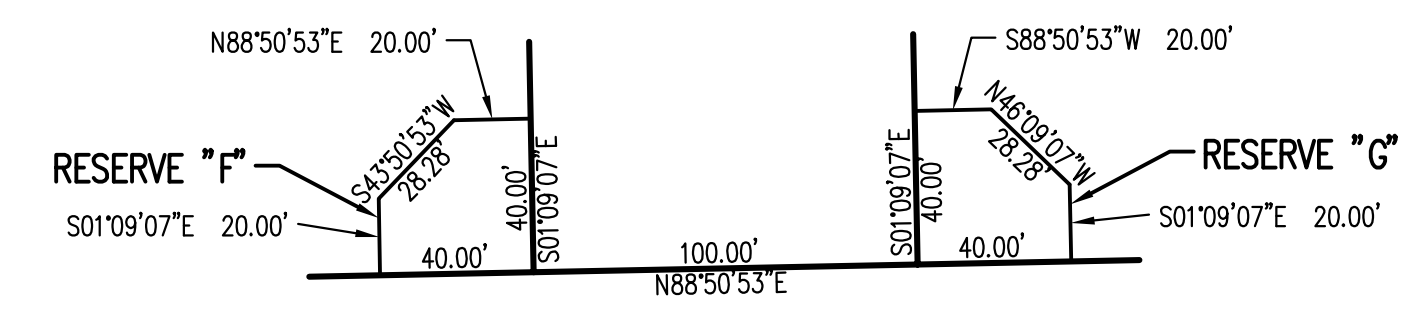
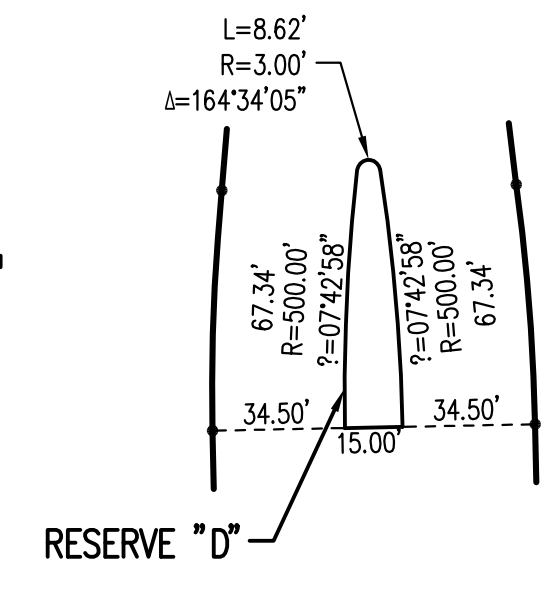
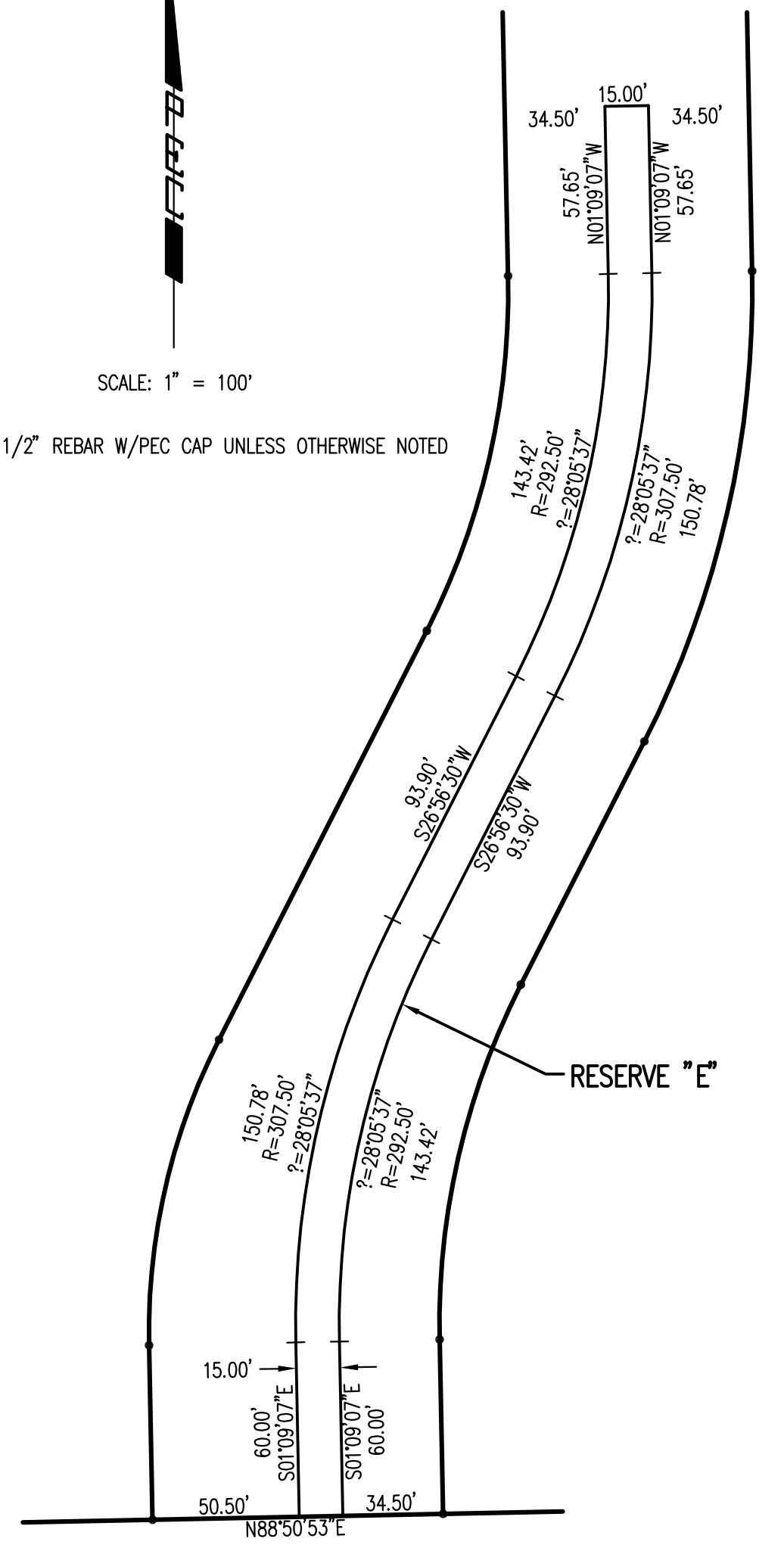


NEWMARKET OFFICE 2ND

AN ADDITION TO WICHITA, SEDGWICK COUNTY, KANSAS



• = 1/2" REBAR W/PEC CAP UNLESS OTHERWISE NOTED



Sowed 05-02-2011 1:26:08 PM by BJS
 Plot Scale 1:100 12-21-2012 6:52:57 PM by BILL J. SEWSON
 G:\2011\1114\003\PART B\1114-003-03C-Final Plat

No.	Revision	By	Date
NEWMARKET OFFICE 2ND STORM WATER DRAIN NO. 376 (PART B)			
PLAT GARY JANZEN, P.E. - CITY ENGINEER CITY OF WICHITA PROJ. NO. 468-84753			
PROFESSIONAL ENGINEERING CONSULTANTS, P.A. 303 SOUTH TOPEKA WICHITA, KS 67202 316-262-2691 www.pec1.com			
Designed by	BMM, JAG	Job No.	35-11114-003
Drawn by	BJS	Date	January 2011
			Sht. 3 of 17