

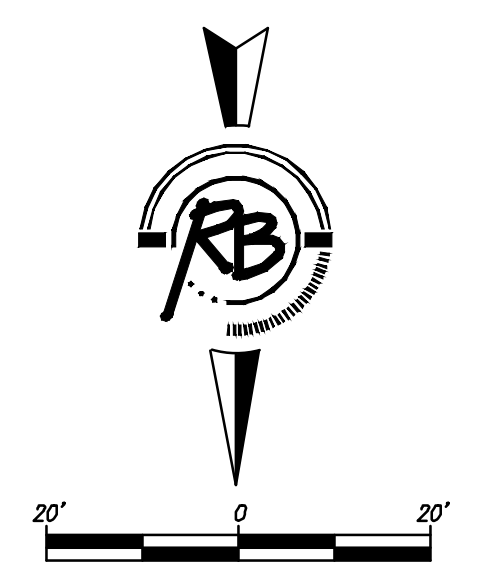
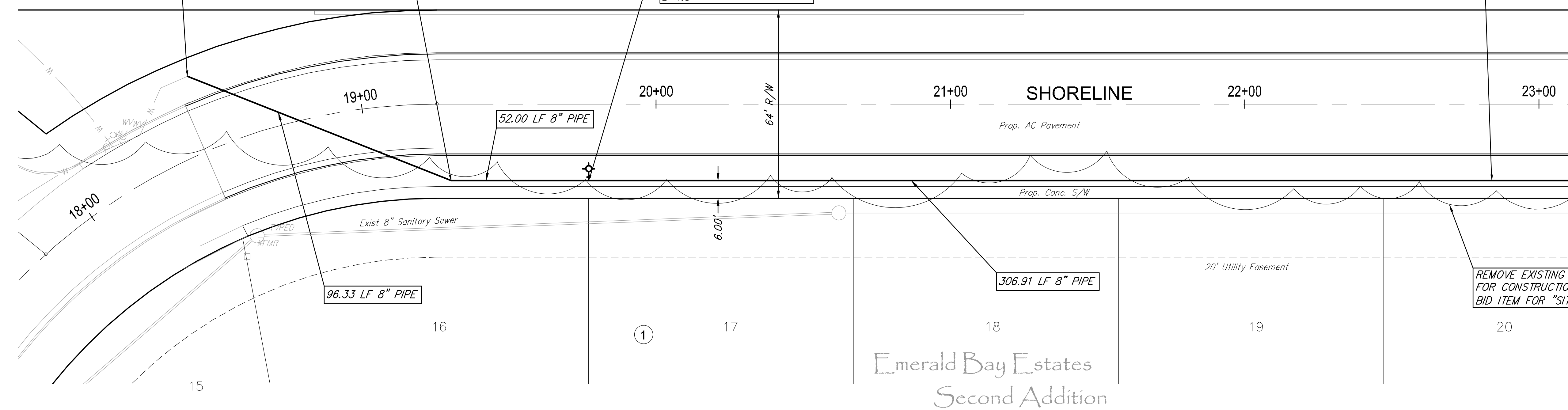
UNPLATTED

N 21339.00 E 21994.40
STA. 0+00.00 WATER LINE 1
BL STA. 18+48.61, 26.00' LT
REMOVE 8" CAP
CONNECT TO EXIST 8" WL
1 - 8" 45° MJ BEND

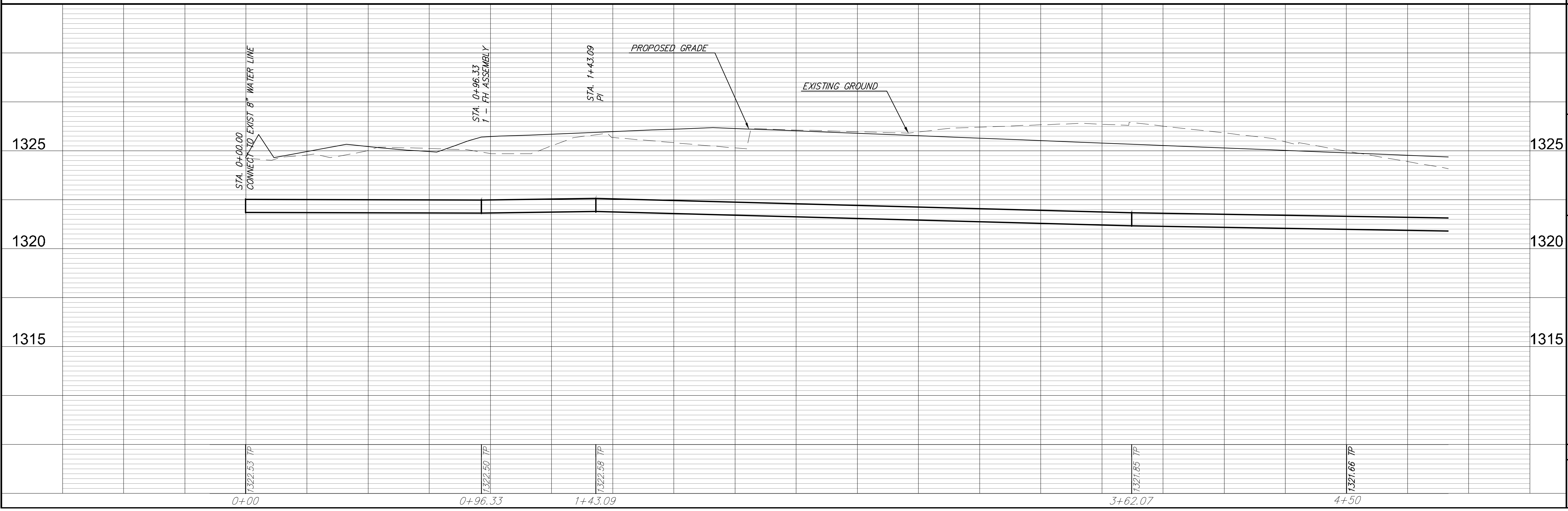
N 21374.39 E 21904.81
STA. 0+96.33 WATER LINE 1
BL STA. 19+30.29, 26.00' RT
1 - 8" 45° MJ BEND

N 21374.39 E 21858.05
STA. 1+43.09 WATER LINE 1
BL STA. 19+77.06, 26.00' RT
1 - FH ASSEMBLY
BURY LINE ELEV.=1326.40
VALVE BOX ELEV.=1326.50
L=4.0'

N 21374.38 E 21551.14
STA. 4+50.00 WATER LINE 1
BL STA. 22+83.96, 26.00' RT



Kuggles & Bohin, P.A.
Professional Surveying, Land Planning
Engineering
904 North Main
Wichita, Kansas 67202
www.kugbles.com
Phone: 316.261.0000
Fax: 316.261.0001
Email: kbohin@kugbles.com



REVISIONS
 REVISION NO. DATE BY
 1 10/8/2012 AML
 2 10/8/2012 AML
 3 10/8/2012 AML

PROJECT NUMBER: 448-90453
 DRAWING FILE: ENGINEERING BASE [03 Line 1]
 WATER LINE IMPROVEMENTS
 LINE 1
 WICHITA, KANSAS

RS: KOB
 4005E
 SHEET
 3
 OF
 7