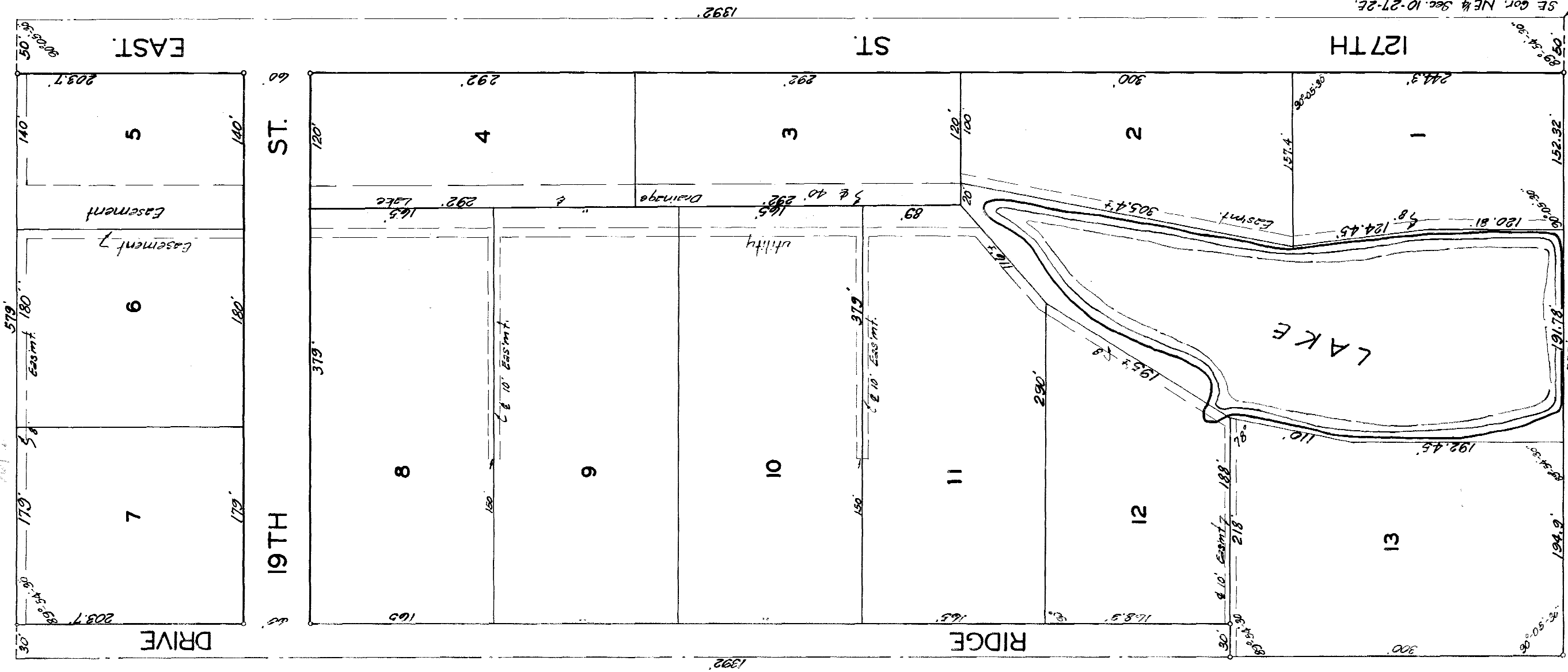


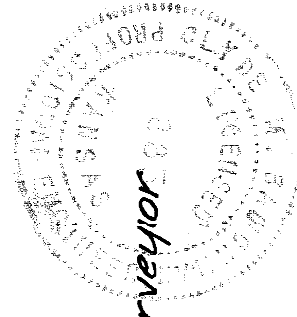
LAKESIDE ACRES

FIRST ADDITION
SEDGWICK COUNTY, KANSAS

N 1/2 S 2
S 1/2 S 2
N 1/2 S 2



State of Kansas }
Sedgwick County, S.S. I, Clyde M. Baughman, Surveyor
in aforesaid county and state do hereby certify that
I have surveyed and platted "LAKESIDE ACRES" 1st Addition
Sedgwick County, Kansas, and that the accompany-
ing plat is a true and correct exhibit of the
property surveyed described as the south 1/2 Sec.
10, Twp. 27-S, R-2-E, of the 6th P.M.



Clyde M. Baughman, Surveyor

Know all men by these presents
that we Arthur J. Stoltz and Madge N. Stoltz
his wife, Philip M. Hickman and Mary C.
Hickman his wife, and John J. Myers and
Albertine G. Myers, his wife, have caused the
land described in the surveyors certificate to
be platted into lots and streets to be known
as "LAKESIDE ACRES" Sedgwick County, Kansas.
Easements are hereby granted as indicated for
the construction and maintenance of all public
utilities. The streets are hereby dedicated to
and for the use of the public. The lake and
the area surrounding the lake is hereby dedicated
to and reserved for the use of the residents of
LAKESIDE ACRES, Sedgwick County, Kansas.

Arthur J. Stoltz
Madge N. Stoltz
Philip M. Hickman
John J. Myers

Mary C. Hickman
Albertine G. Myers

Arthur J. Stoltz
Madge N. Stoltz

State of Kansas } S.S. Be it remembered that on this
Sedgwick County, S.S. day of April 1955, before me
a notary public in aforesaid county and state
came Arthur J. Stoltz and Madge N. Stoltz his
wife, Philip M. Hickman and Mary C. Hickman
his wife, and John J. Myers and Albertine G.
Myers his wife, to me known to be the same
persons who executed the foregoing instrument
of writing and duly acknowledged the execution
of the same. In testimony whereof I have here-
unto set my hand and affixed my notarial
seal the day and year above written.

John A. Chapple, Notary Public
My Commission Expires. Dec. 2, 1957

We, The Chapple Inv. Corporation
holders of a mortgage on a portion of the above
described property do hereby consent to the plat
of LAKESIDE ACRES, Sedgwick County, Kansas.
The Chapple Inv. Corporation

J. N. Chapple, President
J. N. Chapple, Secretary

State of Kansas } S.S. Be it remembered that on this
Sedgwick County, S.S. day of April 1955, before me a
notary public in aforesaid county and state came
The Chapple Inv. Corporation by its President, J.
N. Chapple Sr. and Secretary, J. N. Chapple Jr. to
me known to be the same persons who executed
the foregoing instrument of writing and duly
acknowledged the execution of the same. In test-
imony whereof I have hereunto set my hand and
affixed my notarial seal the day and year above
written.

Mae Higgins, Notary Public
My Commission Expires. 8-23-56

Res. 11340 A&S 519
Res. Vol. 19 346 Page 171
Consent to Plat Lak. Ac. 423

Approved by the Board of
County Commissioners this 5th day of April
1955.

Edwin Schewe, County Clerk

Entered on the transfer record
this 6th day of April, 1955.

Edwin Schewe, County Clerk

State of Kansas } S.S. This is to certify that this
Sedgwick County, S.S. plat was filed for record in the office of the
Register of Deeds this 6 day of April
1955, at 2:30 o'clock P. M. and is duly
recorded.

Raymond Deering, Register of Deeds.

L-2-8