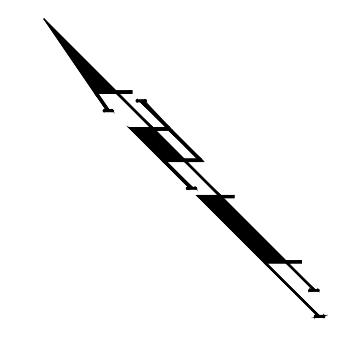
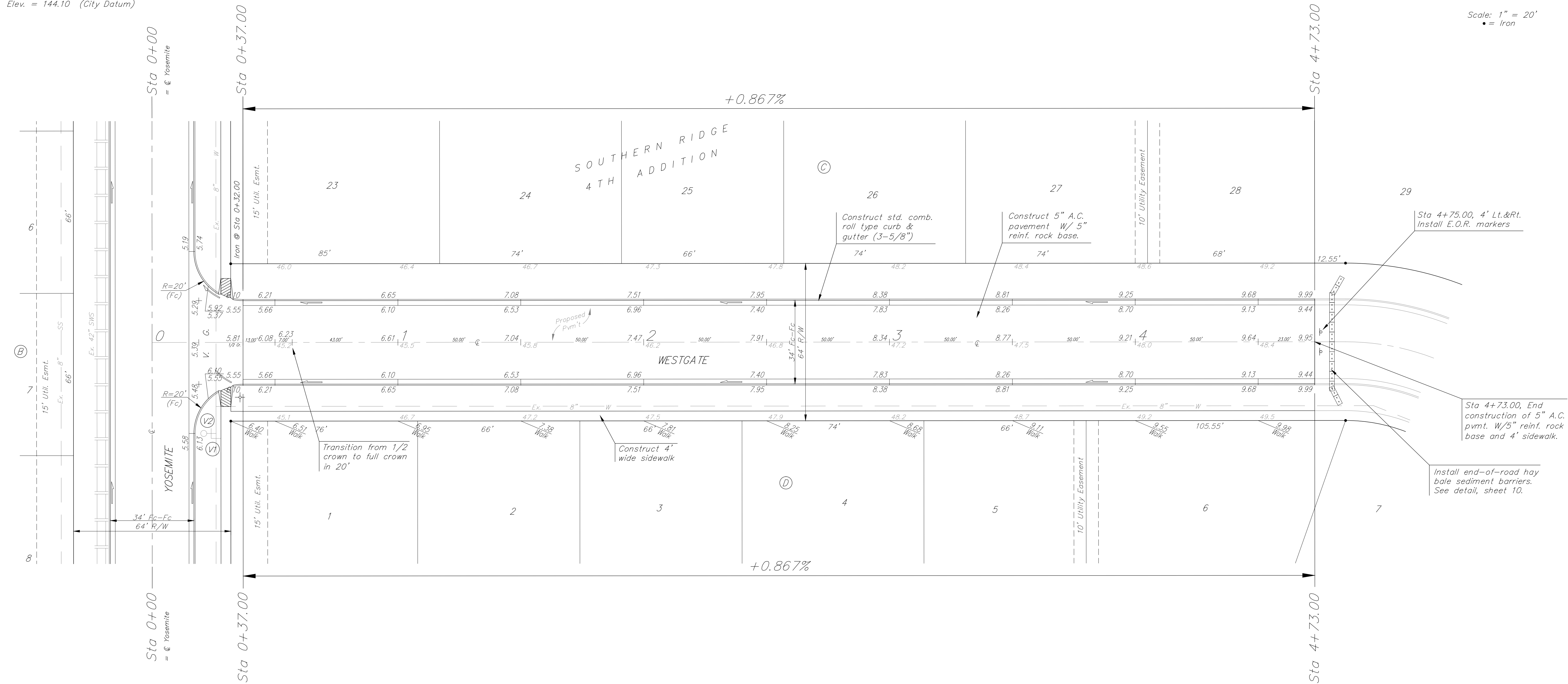


BENCHMARKS:
 BM #1: COW Disc in top of curb adjacent to the fire hydrant at the SW corner of Yosemite and Lamp Cir.
 Elev. = 146.73 (City Datum)

BM #2: COW Disc in top of curb adjacent to the fire hydrant on the west side of Westgate along the southwesterly line of Lot 13, Block B, Southern Ridge Addition.
 Elev. = 144.10 (City Datum)



Scale: 1" = 20'
 • = Iron



NOTE: ROLL TYPE CURB & GUTTER TO BE CONSTRUCTED ON THE PAVEMENT SHOWN ON THIS SHEET. TOP OF CURB ELEVATIONS ARE GIVEN FOR FULL HEIGHT CURB.

	SOUTHERN RIDGE 4TH ADDITION - PH. II	
	WESTGATE STA 0+00 TO STA 4+73.00	
<small>Baughman Company, P.A. 315 Ellis St. Wichita, KS 67211 P 316-262-7271 F 316-262-0149 ENGINEERING SURVEYING PLANNING LANDSCAPE ARCHITECTURE</small>		
PROJECT NUMBER 47284343	DESIGN AEG	DRAWN TMS
REVISIONS:	APPROVED	DATE 01/13
	SCALE Noted	SHEET
		7 OF 16
<small>SouthernRidge4th\Phase2\Str</small>		