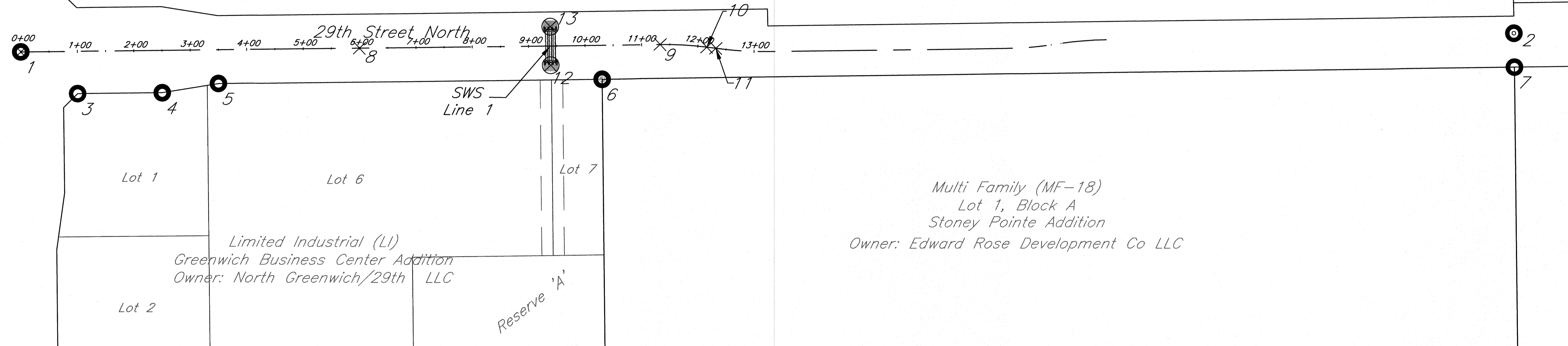


Greenwich Road

Rural Residential (RR)
Owner: Bardabill Inc.



Multi Family (MF-18)
Lot 1, Block A
Stoney Pointe Addition
Owner: Edward Rose Development Co LLC

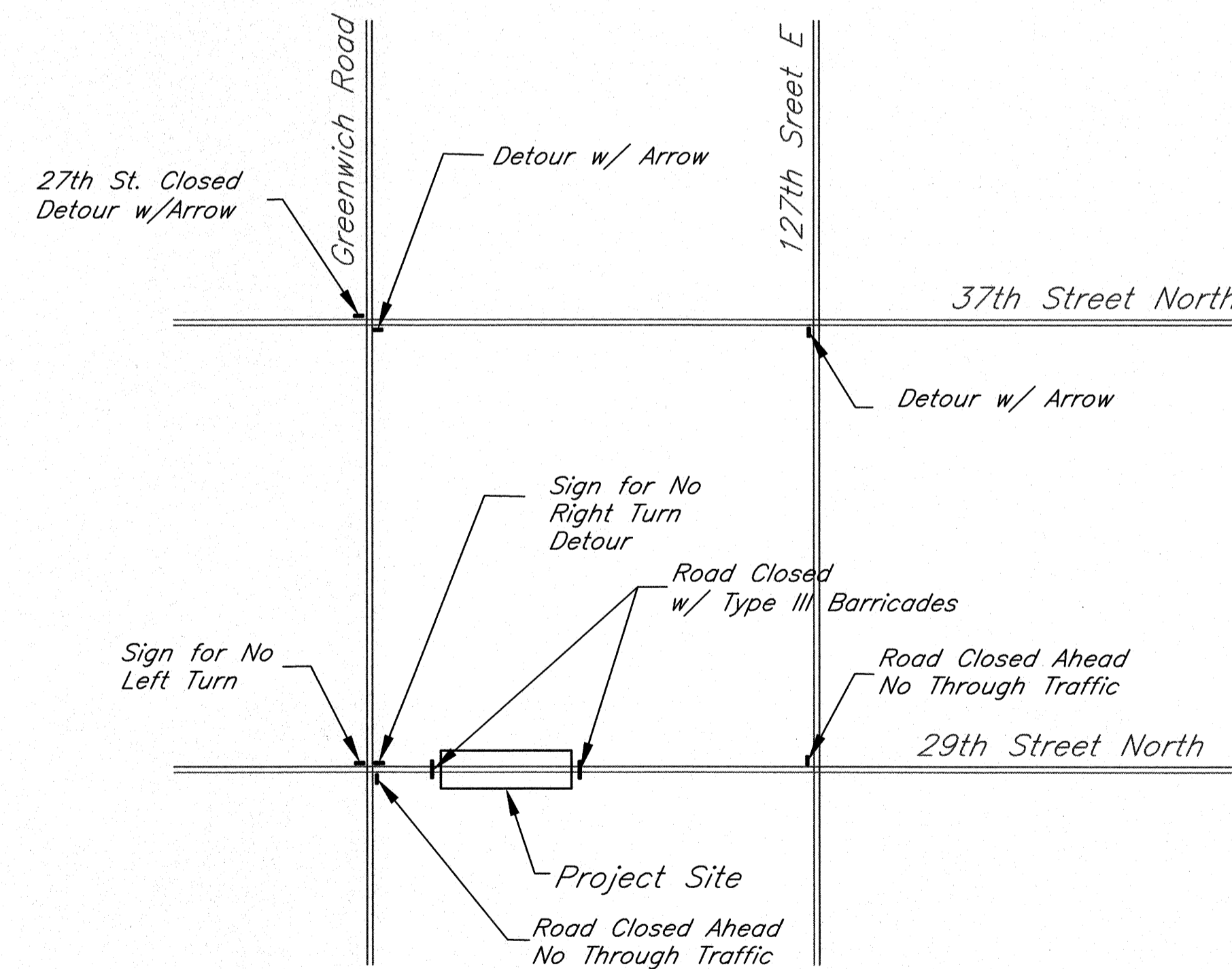
Control Points			
Point #	Northing	Easting	Desc.
1	1704917.37	1685959.02	1/2" Iron pipe, NW Cor. NW1/4, Sec 3 T27S R2E)
2	1704951.04	1688603.62	5/8" Re-Bar(N1/4 Cor. NW1/4, Sec 3 T27S R2E)
3	1704843.65	1686059.69	5/8" Re-Bar (MKEC)
4	1704845.52	1686209.62	5/8" Re-Bar (MKEC)
5	1704861.85	1686309.42	5/8" Re-Bar (MKEC)
6	1704870.50	1686989.52	5/8" Re-Bar
7	1704891.05	1688604.55	5/8" Re-Bar

Alignment Points			
Point #	Northing	Easting	Desc.
1	1704917.37	1685959.02	Sta 0+00.00, BP
8	1704925.01	1686558.97	Sta 06+00.00, Pmnt. Starting Point
9	1704931.79	1687092.11	Sta 11+33.18, PC
10	1704927.15	1687174.61	Sta 12+15.88, PT
11	1704925.14	1687190.61	Sta 12+32.00, EP

Storm Sewer Points			
Point #	Northing	Easting	Desc.
12	1704895.33	1686898.38	Sta 0+00.00 Line 1
13	1704963.32	1686897.52	Sta 0+68.00 Line 1

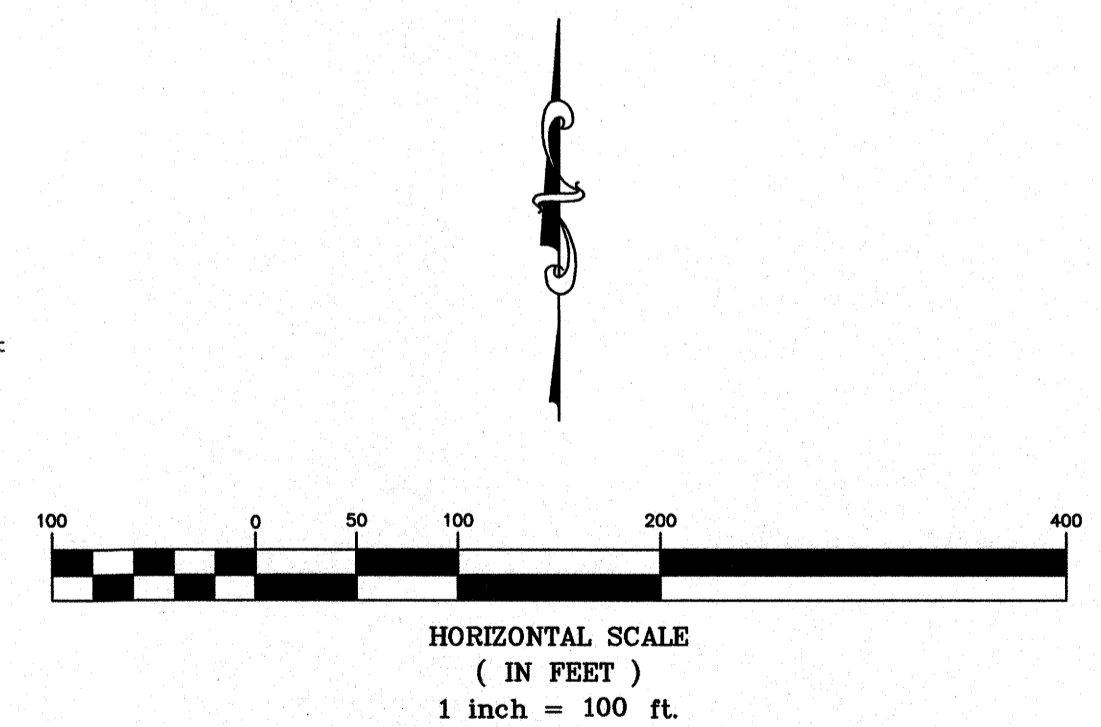
QUANTITIES		
ITEM	QUANTITY	UNITS
AC Pavement 7" (5" Bit base)	1685	SY
Reinforced Crushed Rock Base (6")	1966	SY
Gravel Shoulder (3")	562	SY
Concrete Apron (4")	15	SY
Excavation	3050	CY
Compacted Fill (90% Density)	40	CY
Compacted Fill (95% Density)	60	CY
SWS Pipe RCP 36"	204	LF
RCP End Section 36"	6	EA
Rip-Rap Light Stone	53	SY
Pavement Marking	1	LS
Temporary Traffic Control	1	LS
Sawed Joint	24	LF
Asphalt Pavement Removal	38	SY
Conc. Weir Structure Removed	1	EA
SWS Pipe Removed 12" CMP	33	LF
Fence Removed	1277	LF
Barbed Wire Fence	1039	LF
Site Clearing and Restoration	1	LS
Project Seeding (Temporary)	1	LS
Project Seeding (Permanent)	1	LS
Erosion Control Mat, Curlex II	1	LS
Ditch Check Silt Fence	15	EA
Construction Entrance/Exit	1	EA

- Control Point
- × Center Line Alignment Point
- ⊗ Storm Sewer Point



Temporary Traffic Control

Note: The temporary traffic control shown is the concept only. Contractor shall follow the latest edition of MUTCD standard for signage and details.



29th Street North
Control Map/Quantities
Wichita, Kansas



PROJECT NUMBER 472-84983			
KEM NO. 12078	FILE	DATE 10/2012	SHEET 6.0
DESIGN GP	DRAWN GP	REVISED	