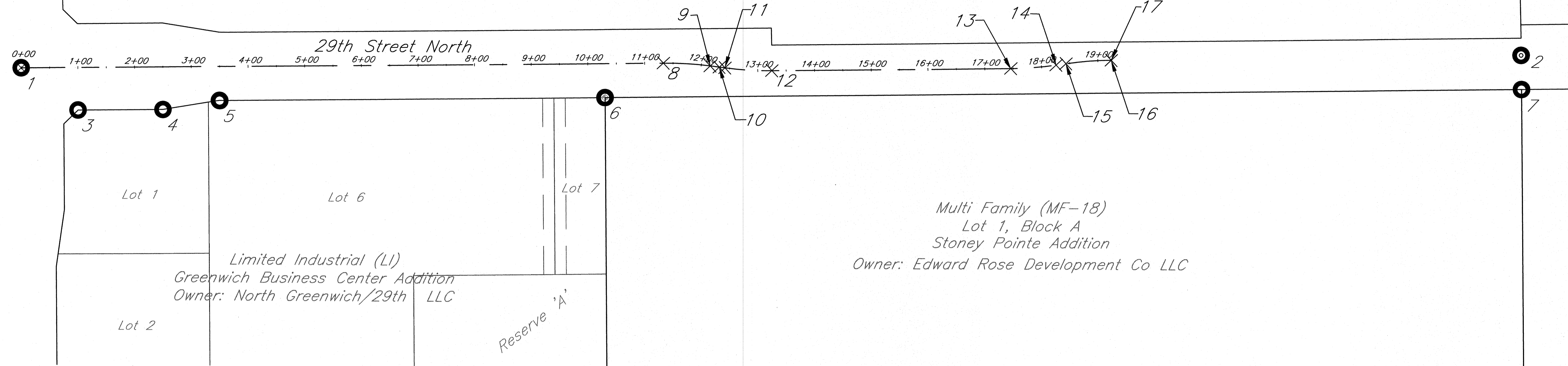


Greenwich Road

Rural Residential (RR)
Owner: Bardabill Inc.



Multi Family (MF-18)
Lot 1, Block A
Stoney Pointe Addition
Owner: Edward Rose Development Co LLC

Control Points

Point #	Northing	Easting	Desc.
1	1704917.37	1685959.02	1/2" Iron pipe, NW Cor. NW1/4, Sec 3 T27S R2E)
2	1704951.04	1688603.62	5/8" Re-Bar(N1/4 Cor. NW1/4, Sec 3 T27S R2E)
3	1704843.65	1686059.69	5/8" Re-Bar (MKEC)
4	1704845.52	1686209.62	5/8" Re-Bar (MKEC)
5	1704861.85	1686309.42	5/8" Re-Bar (MKEC)
6	1704870.50	1686989.52	5/8" Re-Bar
7	1704891.05	1688604.55	5/8" Re-Bar

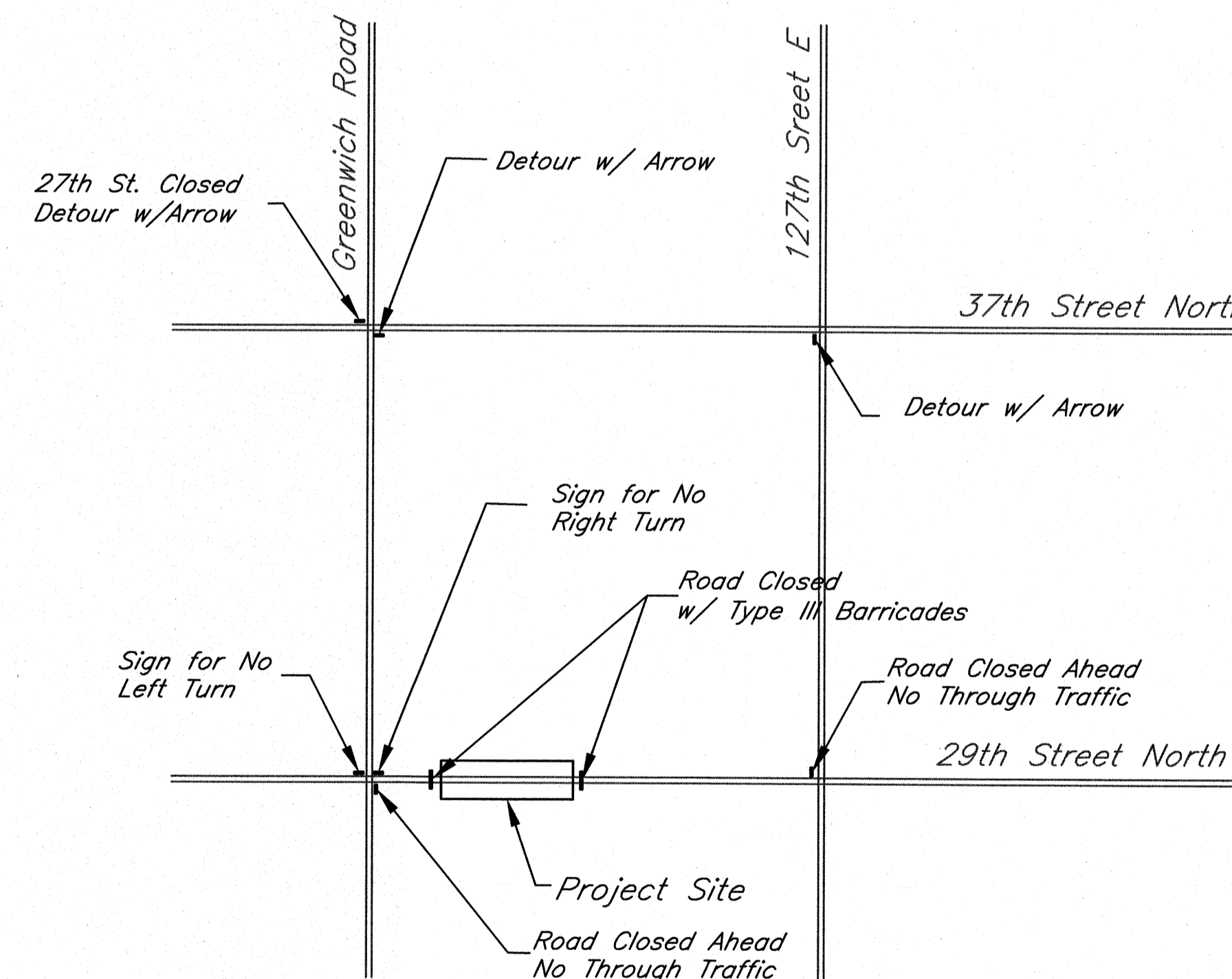
Alignment Points

Point #	Northing	Easting	Desc.
1	1704917.37	1685959.02	Sta 0+00.00, BP
8	1704931.79	1687092.11	Sta 11+33.18, PC
9	1704927.15	1687174.61	Sta 12+15.88, PT
10	1704925.14	1687190.61	Sta 12+32.00, Pymt. Starting Point
11	1704923.87	1687200.74	Sta 12+42.11, PC
12	1704919.23	1687283.25	Sta 13+24.91, PT
13	1704924.59	1687704.30	Sta 17+46.00, PC
14	1704930.94	1687784.06	Sta 18+26.07, PT
15	1704933.48	1687801.31	Sta 18+43.51, PC
16	1704939.83	1687881.29	Sta 19+23.80, PT
17	1704939.83	1687881.29	Sta 19+00.00, EP

QUANTITIES

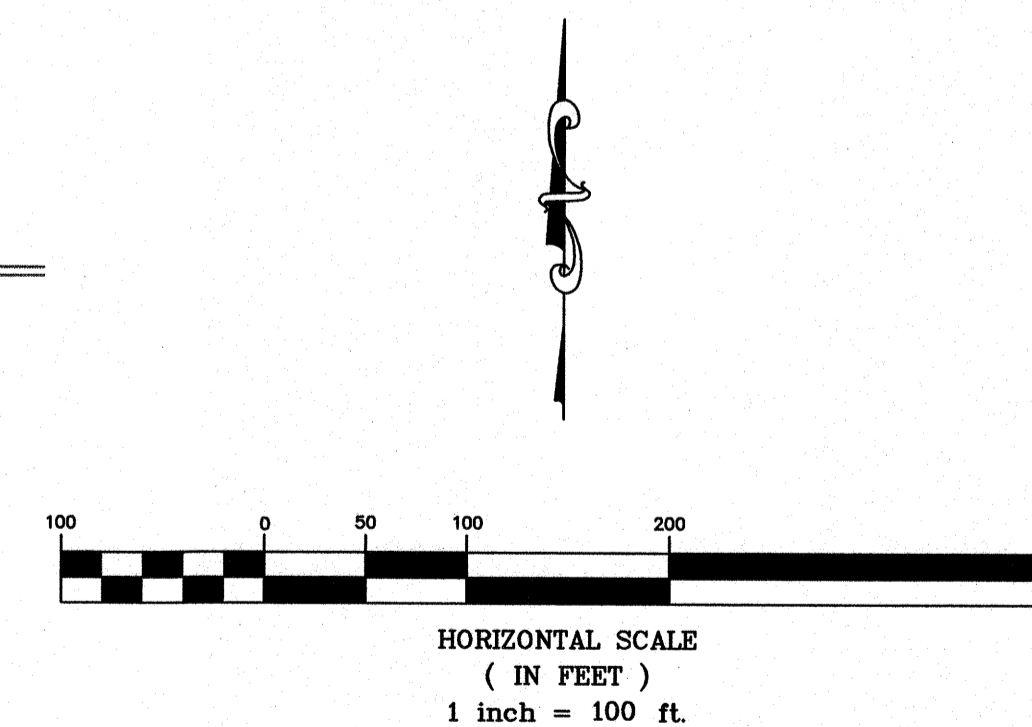
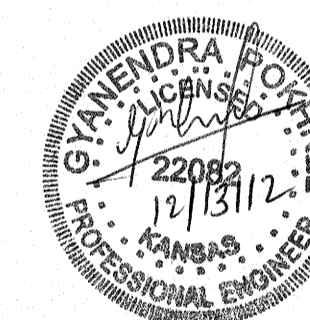
ITEM	QUANTITY	UNITS
AC Pavement 7" (5" Bit base)	1843	SY
Reinforced Crushed Rock Base (6")	2151	SY
Gravel Shoulder (3")	400	SY
Excavation	2580	CY
Compacted Fill (90% Density)	30	CY
Compacted Fill (95% Density)	35	CY
Pavement Marking	1	LS
Traffic Control	1	LS
Fence Removed (Barbed Wire)	1578	LF
Barbed Wire Fence (New)	821	LF
Site Clearing and Restoration	1	LS
Project Seeding (Temporary)	1	LS
Project Seeding (Permanent)	1	LS
Erosion Control Mat, Curlex II	1	LS
Ditch Check Silt Fence	14	EA

- Control Point
- × Center Line Alignment Point
- ⊗ Storm Sewer Point



Temporary Traffic Control

Note: The temporary traffic control shown above is the concept only. Contractor shall follow the latest edition of MUTCD standard for signage and details.



29th Street North
Control Map/Quantities
Wichita, Kansas



PROJECT NUMBER 472-84980			
KEM NO. 12078	FILE	DATE 10/2012	SHEET 5.0
DESIGN GP	DRAWN GP	REVISED	