

ALBERT CLEMENT &
ADALINE REV LIV TRS
3201 N 135TH. ST. W
WICHITA KS 67223-7012

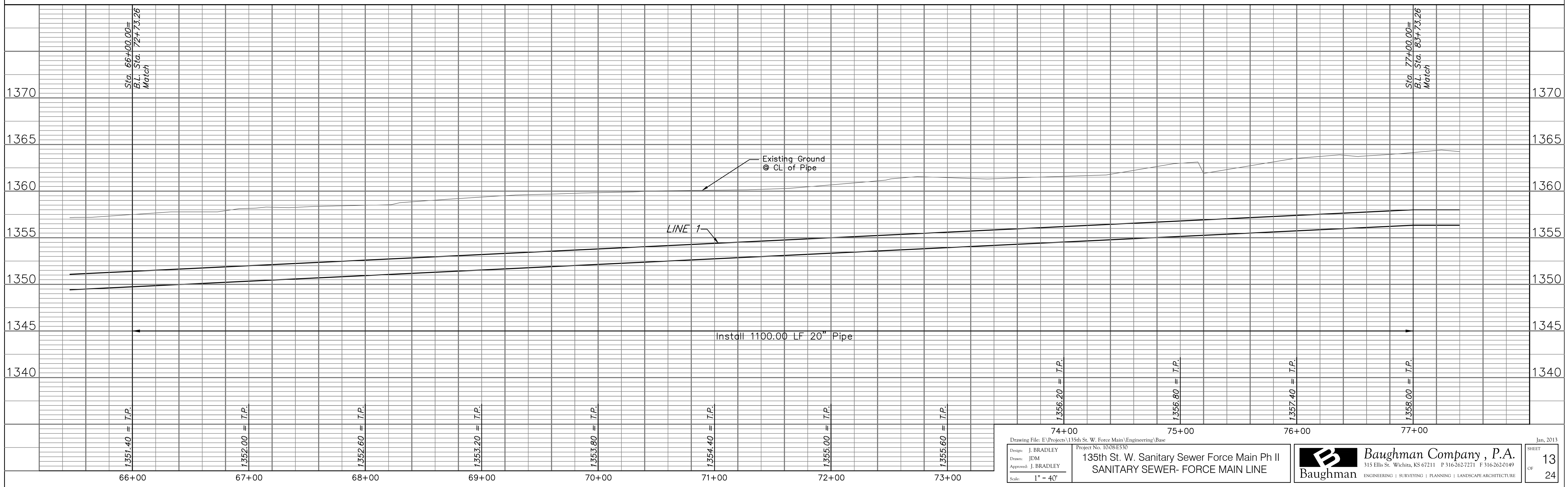
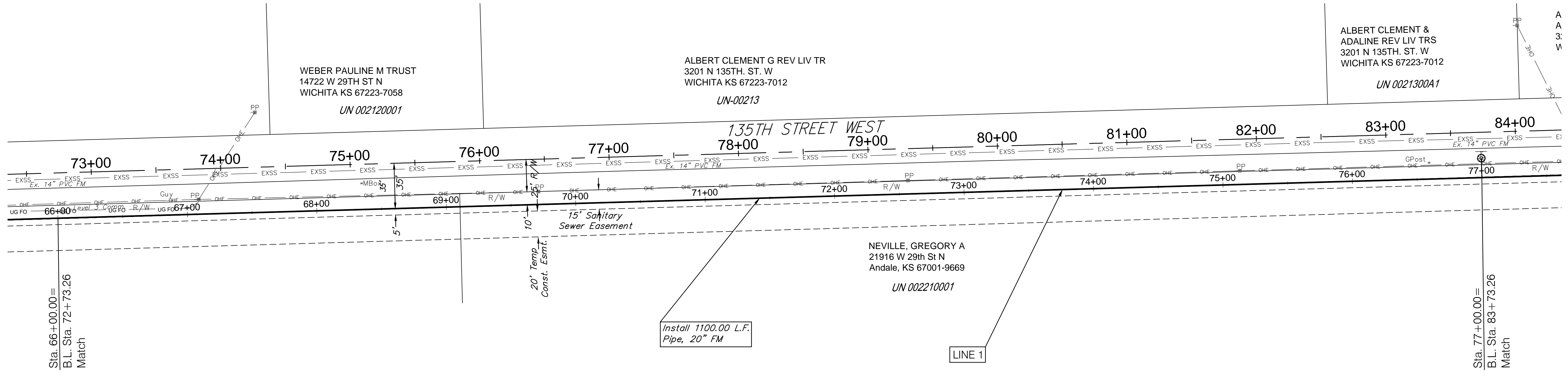
UN 0021300A1

WEBER PAULINE M TRUST
14722 W 29TH ST N
WICHITA KS 67223-7058

UN 002120001

ALBERT CLEMENT G REV LIV TR
3201 N 135TH. ST. W
WICHITA KS 67223-7012

UN-00213



Drawing File: E:\Projects\135th St. W. Force Main\Engineering\Base Project No. 10084530		Baughman Company, P.A. 315 Ellis St. Wichita, KS 67211 P 316-262-7271 F 316-262-0149 ENGINEERING SURVEYING PLANNING LANDSCAPE ARCHITECTURE	Jan, 2013 SHEET 13 OF 24
Design: J. BRADLEY Drawn: JDM Approved: J. BRADLEY Scale: 1" = 40'			135th St. W. Sanitary Sewer Force Main Ph II SANITARY SEWER- FORCE MAIN LINE