

C.P. #3
Iron Pipe in Thimble
NW Corner, NW 1/4, Sec. 31,
Twp 27 S., Range 1 E.
N=11,944.68
E=17,173.45

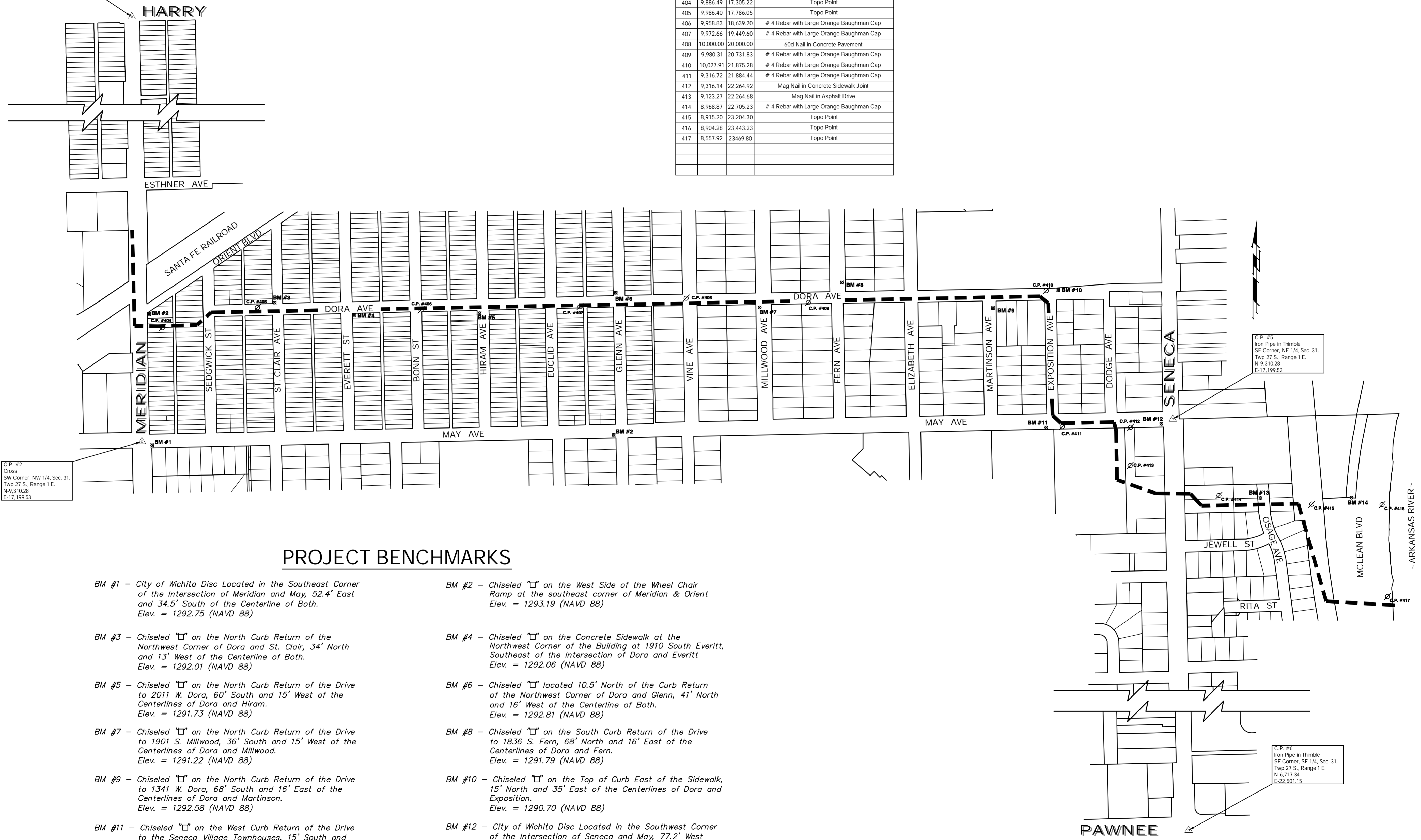
ADDITIONAL CONTROL POINTS

C.P. #	Northing	Easting	Description
404	9,886.49	17,305.22	Topo Point
405	9,986.40	17,786.05	Topo Point
406	9,958.83	18,639.20	# 4 Rebar with Large Orange Baughman Cap
407	9,972.66	19,449.60	# 4 Rebar with Large Orange Baughman Cap
408	10,000.00	20,000.00	60d Nail in Concrete Pavement
409	9,980.31	20,731.83	# 4 Rebar with Large Orange Baughman Cap
410	10,027.91	21,875.28	# 4 Rebar with Large Orange Baughman Cap
411	9,316.72	21,884.44	# 4 Rebar with Large Orange Baughman Cap
412	9,316.14	22,264.92	Mag Nail in Concrete Sidewalk Joint
413	9,123.27	22,264.68	Mag Nail in Asphalt Drive
414	8,968.87	22,705.23	# 4 Rebar with Large Orange Baughman Cap
415	8,915.20	23,204.30	Topo Point
416	8,904.28	23,443.23	Topo Point
417	8,557.92	23,469.80	Topo Point

C.P. #2
Cross
SW Corner, NW 1/4, Sec. 31,
Twp 27 S., Range 1 E.
N=9,310.28
E=17,199.53

C.P. #5
Iron Pipe in Thimble
SE Corner, NE 1/4, Sec. 31,
Twp 27 S., Range 1 E.
N=9,310.28
E=17,199.53

C.P. #6
Iron Pipe in Thimble
SE Corner, SE 1/4, Sec. 31,
Twp 27 S., Range 1 E.
N=6,717.34
E=22,501.15



PROJECT BENCHMARKS

- BM #1 - City of Wichita Disc Located in the Southeast Corner of the Intersection of Meridian and May, 52.4' East and 34.5' South of the Centerline of Both. Elev. = 1292.75 (NAVD 88)
- BM #2 - Chiseled "□" on the West Side of the Wheel Chair Ramp at the southeast corner of Meridian & Orient Elev. = 1293.19 (NAVD 88)
- BM #3 - Chiseled "□" on the North Curb Return of the Northwest Corner of Dora and St. Clair, 34' North and 13' West of the Centerline of Both. Elev. = 1292.01 (NAVD 88)
- BM #4 - Chiseled "□" on the Concrete Sidewalk at the Northwest Corner of the Building at 1910 South Everitt, Southeast of the Intersection of Dora and Everitt Elev. = 1292.06 (NAVD 88)
- BM #5 - Chiseled "□" on the North Curb Return of the Drive to 2011 W. Dora, 60' South and 15' West of the Centerlines of Dora and Hiram. Elev. = 1291.73 (NAVD 88)
- BM #6 - Chiseled "□" located 10.5' North of the Curb Return of the Northwest Corner of Dora and Glenn, 41' North and 16' West of the Centerline of Both. Elev. = 1292.81 (NAVD 88)
- BM #7 - Chiseled "□" on the North Curb Return of the Drive to 1901 S. Millwood, 36' South and 15' West of the Centerlines of Dora and Millwood. Elev. = 1291.22 (NAVD 88)
- BM #8 - Chiseled "□" on the South Curb Return of the Drive to 1836 S. Fern, 68' North and 16' East of the Centerlines of Dora and Fern. Elev. = 1291.79 (NAVD 88)
- BM #9 - Chiseled "□" on the North Curb Return of the Drive to 1341 W. Dora, 68' South and 16' East of the Centerlines of Dora and Martinson. Elev. = 1292.58 (NAVD 88)
- BM #10 - Chiseled "□" on the Top of Curb East of the Sidewalk, 15' North and 35' East of the Centerlines of Dora and Exposition. Elev. = 1290.70 (NAVD 88)
- BM #11 - Chiseled "□" on the West Curb Return of the Drive to the Seneca Village Townhouses, 15' South and 52' West of the Centerlines of May and Exposition. Elev. = 1291.76 (NAVD 88)
- BM #12 - City of Wichita Disc Located in the Southwest Corner of the Intersection of Seneca and May, 77.2' West and 23.5' South of the Centerline of Both. Elev. = 1289.23 (NAVD 88)
- BM #13 - Chiseled "□" on the Top of Curb at the South Lot Line of Lot 2, Van McNew Addition on the West Side of Osage. Elev. = 1287.70 (NAVD 88)
- BM #14 - Chiseled "□" on the Top of Curb at the South Property Line of MTA Addition on the West Side of McLean. Elev. = 1290.66 (NAVD 88)

Drawing File: E:\ang\Meridian Drainage\Keysheet.dwg
 Design: TPV
 Drawn: TPV
 Approved: TPV
 Scale: NONE
 Project No. 0802.E018 CAPITAL IMPROVEMENT PROJECT
PROJECT KEYSHEET
 MERIDIAN - PAWNEE TO ORIENT DRAINAGE PROJECT

Baughman Company, P.A.
 315 Ellis St., Wichita, KS 67211 P 316.262.7271 F 316.262.0149
 ENGINEERING | SURVEYING | PLANNING | LANDSCAPE ARCHITECTURE